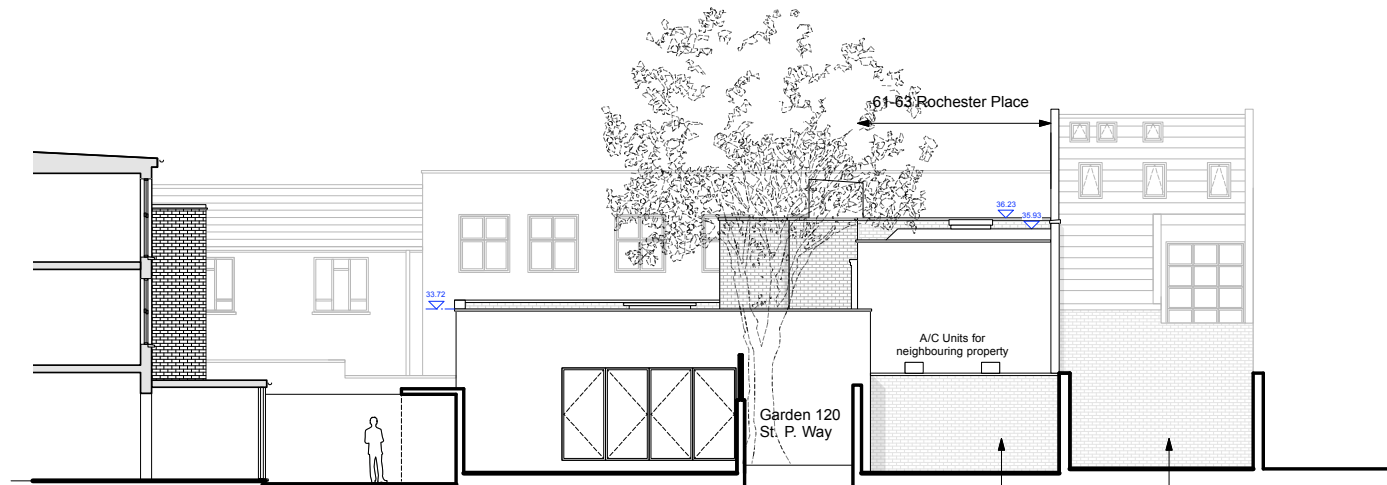


57-59 Rochester Place

61-63 Rochester Place

No. 7 Reeds Place

Front Elevation - North East



No. 1 Reeds Place
(Shown indicatively only)

61-63 Rochester Place

57-59 Rochester Place
(Shown indicatively only)

Rear Elevation - South West

Rev. C -01.02.12 - Planning Submission Drawing
Rev. B -23.01.12 - Draft Planning
Rev. A - 25.08.11 - Dimensions checked & updated

Scale
0 1m 2m 5m 8m

Norton Ellis Architects Ltd
14 Baltic Street East
London EC1Y 0UJ
Tel: 020 7490 3142
Fax: 056 0209 3407
www.nortonellis.co.uk
mail@nortonellis.co.uk

These particulars do not constitute, nor constitute any part of, an offer or a contract. All statements contained in these particulars as to this property are made without the responsibility on the part of Norton Ellis Architects Ltd. or the Vendors or Lessors. None of the statements contained in these particulars as to this property are to be relied on as statements or representations of fact. All measurements are approximate and no responsibility is taken for any error, omission, or mis-statement and any intending purchaser or tenants must satisfy themselves by inspection or otherwise as to the correctness of each of the statements contained in these particulars plans.
Do not scale from this drawing. All dimensions to be checked on site and any discrepancy to be reported to the Architect prior to construction.
This drawing to be read in conjunction with all other drawings including those of other consultants.
Samples of all materials to be provided for comment/ approval prior to fabrication/construction.

© 2011 Norton Ellis Architects Ltd.

Existing Front & Rear Elevations

PURPOSE OF ISSUE
Preliminary ☐
Planning ☒
Tender ☐
Construction ☐

235-005
Rev: C
Date: 02.08.11
Scale: 1:100 @ A2

norton ellis architects nea

61-63 Rochester Place, NW11 9JU
Existing Front & Rear Elevations