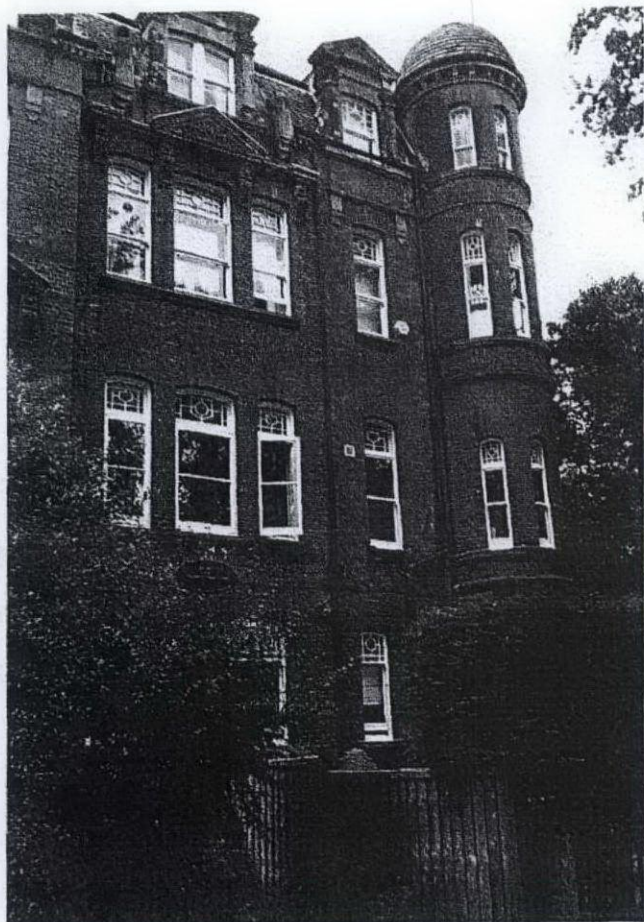


Location of Plaque Fixing

We propose to locate the plaque 5800mm from the right hand edge Of the property and 3780mm from ground level (54 courses of Brick). Please see photo below.



The plaque needs to be located at this height so it is visible to pedestrians.

We have over 30 similar plaques located in Hampstead . Indeed our most recent plaque was erected on a building owned by Camden Council & unveiled by the Mayor of Camden.

We hope that this application will be processed as soon as possible.
If you have any further enquiries please call or email me at your earliest convenience.

Juliette Sonabend
020 7794 9415
07831 263414
Juliette@sonabend.co.uk

J.B. PRIESTLEY

LISTED BUILDING CONSENT APPLICATION INFORMATION

Design, Manufacture and Fixing

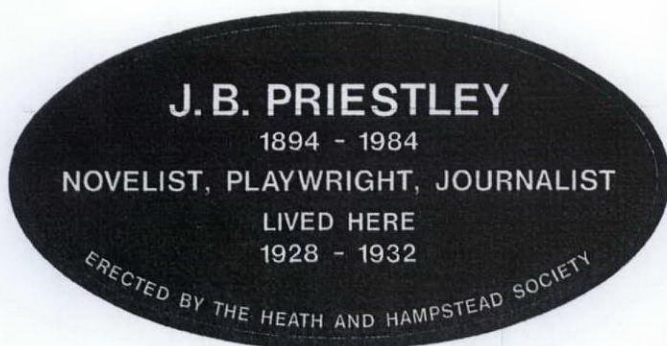
The Heath & Hampstead Society plaques are oval in shape.

The standard size to which the plaque will be made is 750mm by 385mm. It will be fabricated from 3mm thick solid sheet aluminium; they are relief etched with a raised border and text. The plaques are stove enamelled, with an antique black background and ivory lettering.

The plaques are surfaced mounted using either of the following methods:

- **face fixed** – screw fixed into a wall using two screws
- **rear stud fixed** – using four studs behind the plaque which are screwed into a wall, there are no visible fixings.

This latter method is usually favoured. With either method the installation of a plaque has no impact upon the fabric of the building.



J. B. PRIESTLEY

1894 - 1984

NOVELIST, PLAYWRIGHT, JOURNALIST

LIVED HERE

1928 - 1932

ERECTED BY THE HEATH AND HAMPSTEAD SOCIETY