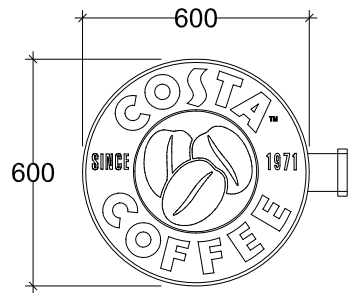


This drawing is the copyright of Street Ete Associates Limited.

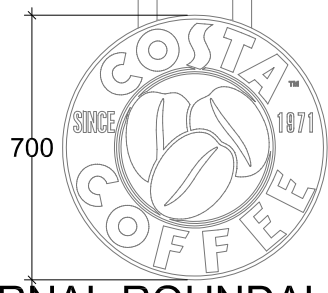
Do not scale from drawings. All dimensions and levels to be checked on site prior to commencement of work or manufacture of items. Notify SEA of any discrepancies.

This drawing to be read in conjunction with specifications, specialist drawings and any bill of quantities.

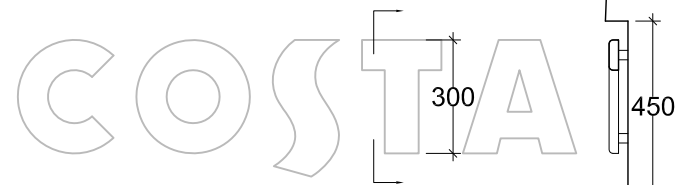
The Contractor is to comply with all relevant statutory legislation whether or not specifically stated on these drawings.



PROJECTING SIGN SCALE 1:20
600mm diameter x 38mm thickness.
Timber double-sided projection sign.
Exterior grade 19mm marine plywood timber fascia boards bonded back to back to be primed, undercoated and finished with 'Farrow & ball' gloss. Signwritten white painted detail to both sides and a weatherseal varnish to finish.
3mm laser cut stainless steel beans bonded to face.

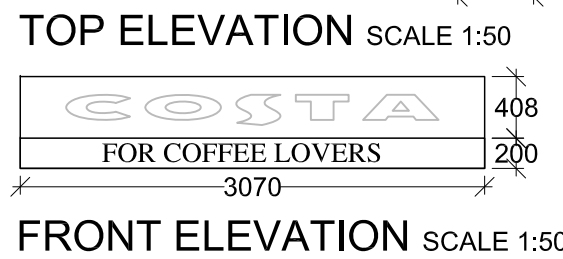
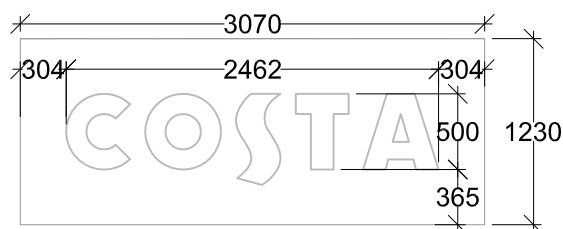
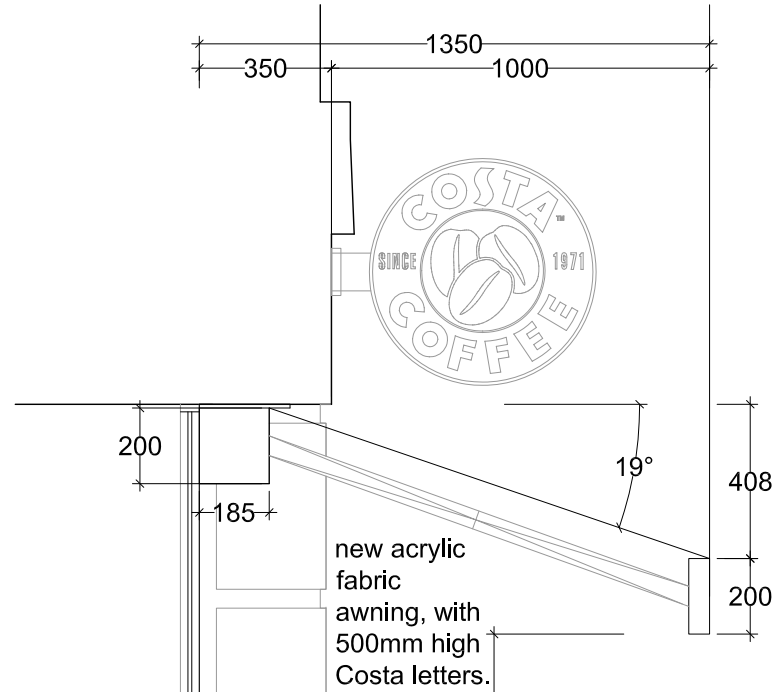


INTERNAL ROUNDAL SCALE 1:20
Suspended Roundal 700mm
Double sided suspended built-up 'roundel logo' 700mm diameter 5mm opal perspex panel with screen printed detail. Laser cut 3mm stainless steel beans fixed to face. Outer casing in de-scaled stainless steel powder coated red. Inner galvanised frame with aluminium adjustable drop rods sprayed silver.
Internal casing sprayed gloss white.
Internal white LED illumination

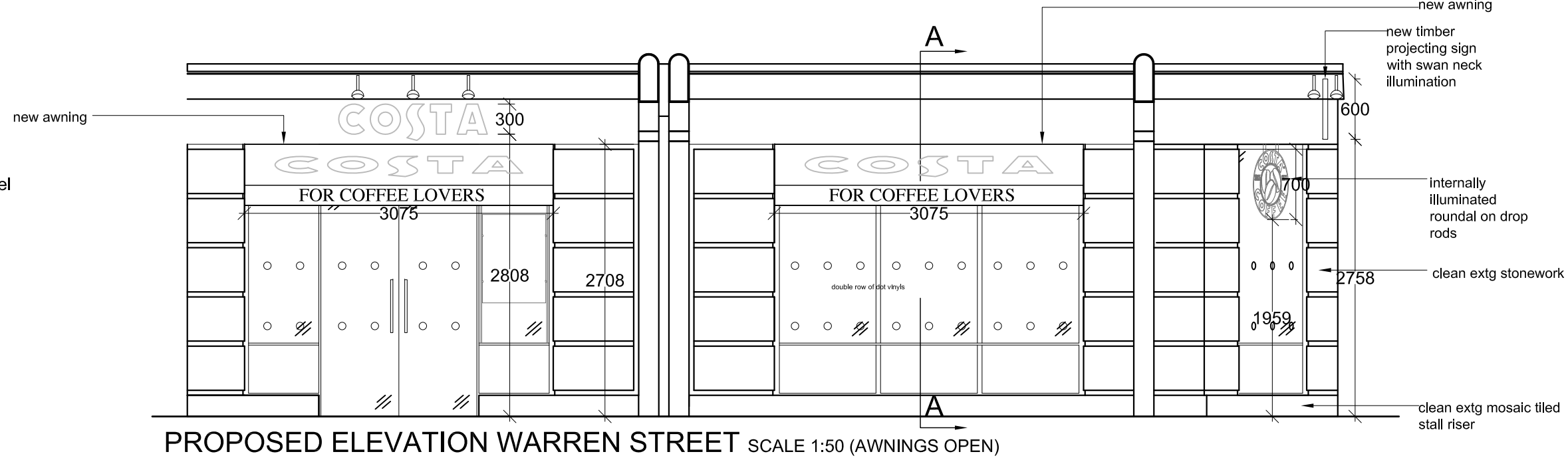


FASCIA SIGN SCALE 1:20
25mm thick, 300mm 't' height timber letters finished in 'Farrow & Ball' white with radiused edge to face of letter.
Letters fixed to fascia boards with 25mm brass stand-off locators.

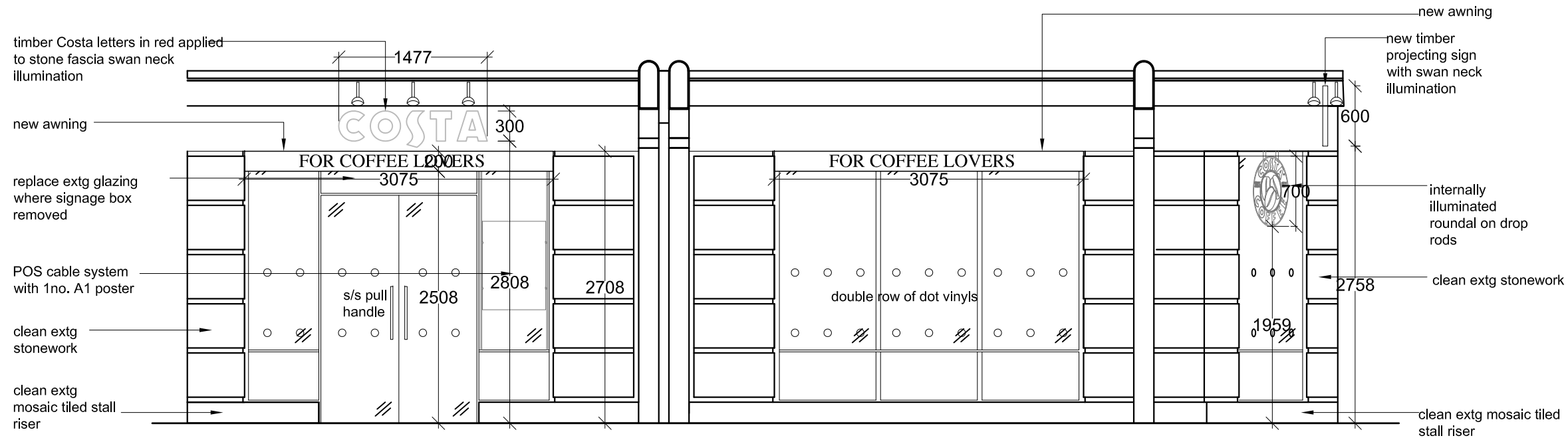
SECTION SCALE 1:20



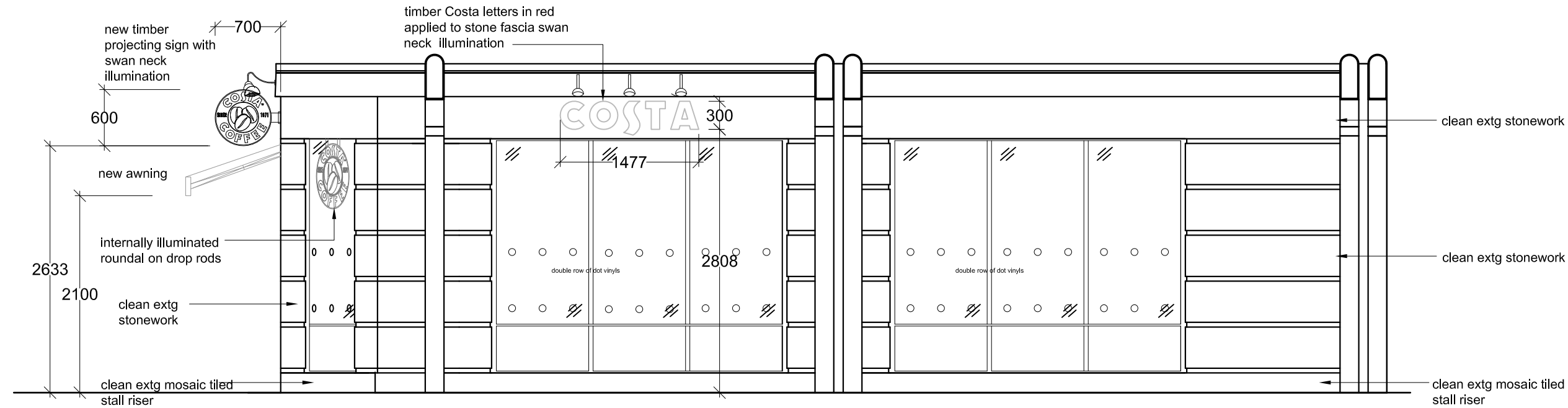
SECTION A-A SCALE 1:20



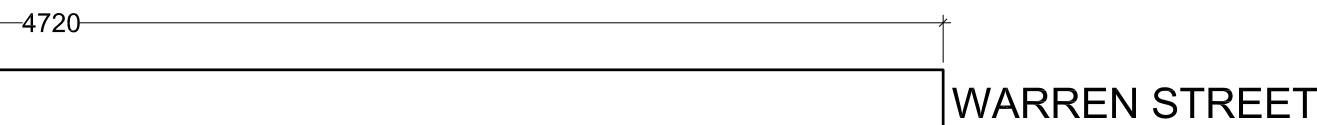
PROPOSED ELEVATION WARREN STREET SCALE 1:50 (AWNINGS OPEN)



PROPOSED ELEVATION WARREN STREET SCALE 1:50



PROPOSED ELEVATION SIDE STREET SCALE 1:50



WARREN STREET

SEA DESIGN GROUP

Client	COSTA		
Project	Warren Street London		
Drawing Title	Advertisement Elevations & Details		
Scale	1:50/20@A2	Date	30.05.12
Drg No	211052.ADV	Rev	
Drg By	jj	Check	
Revisions By			

☒ UK Office
Princes Drive, Kettleworth,
Warwickshire, CV8 2FD UK
☐ UAE Office
PO Box 214533,
Dubai, UAE

Telephone +44 (0)1926 864440
Fax +44 (0)1926 864441
Email sea.uk@seadesigngroup.com
Telephone +971 (4) 324 5085
Fax +971 (4) 324 5087
Email sea.ae@seadesigngroup.com
Website seadesigngroup.com