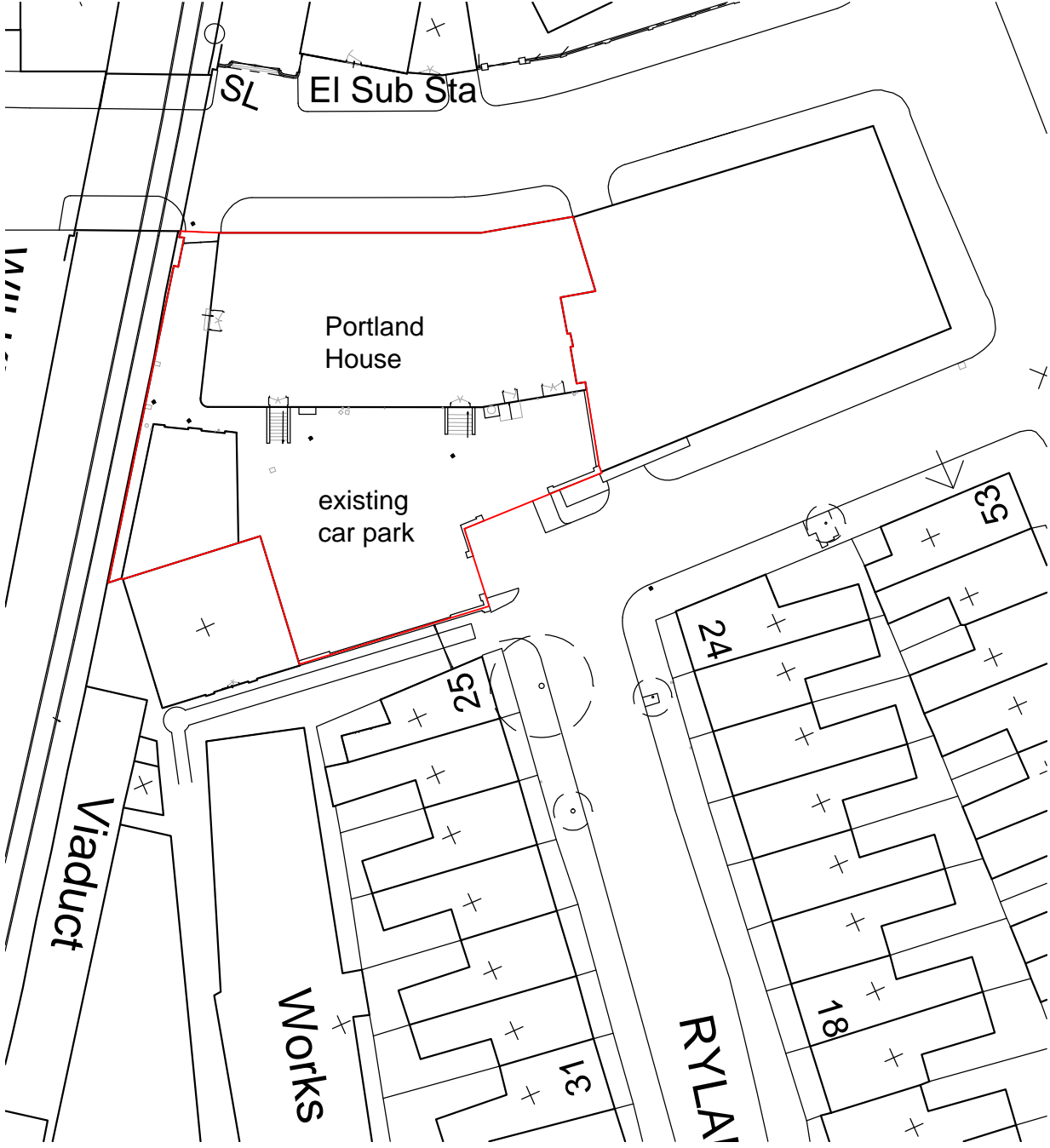
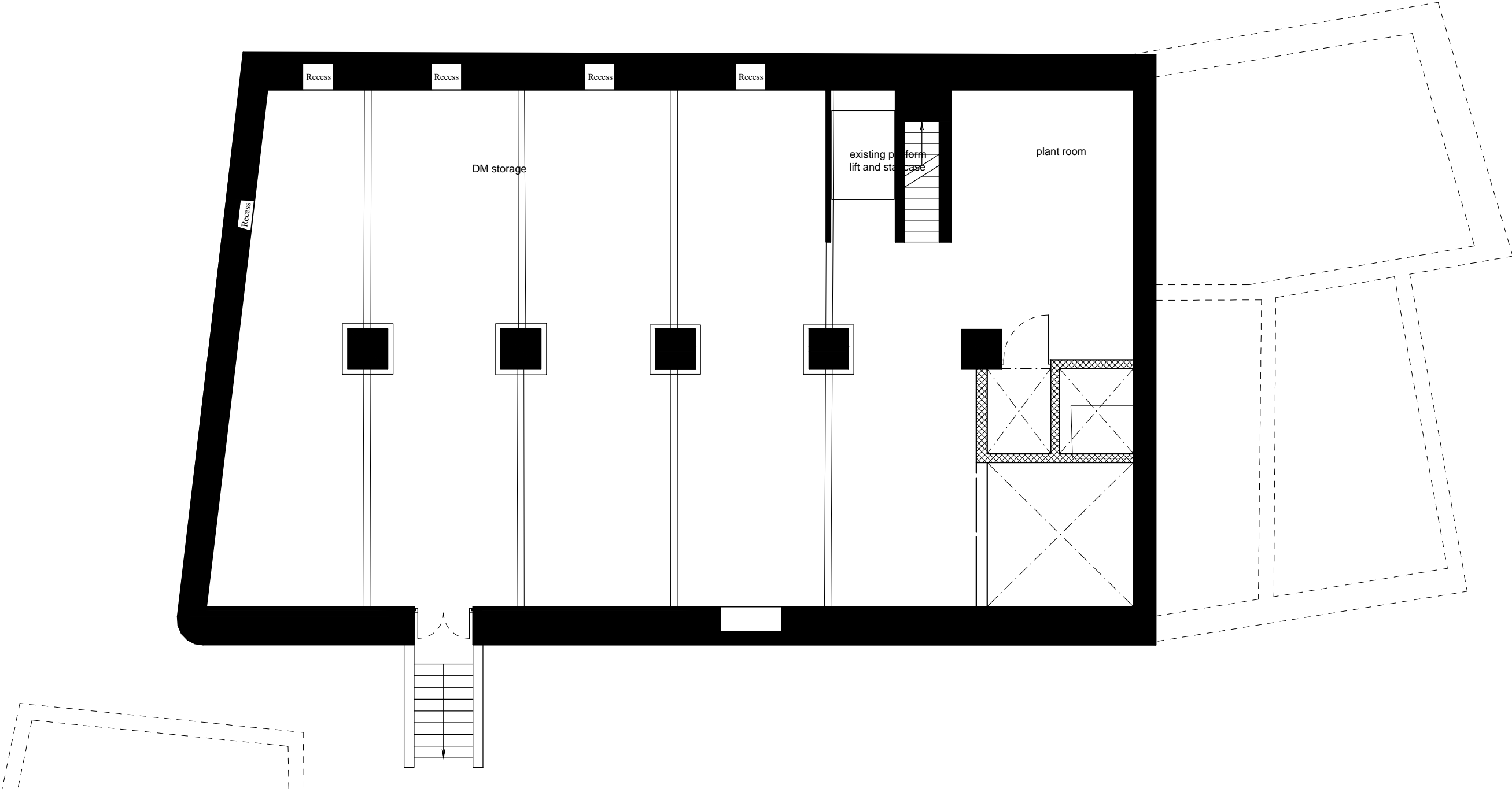


ground floor plan



location plan
scale: 1:500



basement floor plan

A 13.06.12 basement and ground floor correctedJM
to show planning approved layout

REV DATE AMENDMENT BY

hpb architects HEBER PERCY & PARKER ARCHITECTS
3-5 Bleeding Heart Yard, London EC1N 6SJ
T: 020 7404 2505 F: 020 7404 2545
E: admin@hpbpa.co.uk

PROJECT
PORTLAND HOUSE
RYLAND ROAD
CLIENT
DELBANCO MEYER

DRAWING DESCRIPTION
PLANNING APPROVED BASEMENT AND GROUND
FLOOR PLANS

SCALE 1:100@A1 DRAWN BY JM DATE MAY.2012
DRAWING NUMBER 1051.16 REV A

NOTES:
1. THIS DRAWING IS NOT TO BE SCALED
2. CONTRACTOR TO CHECK ALL DIMENSIONS AND LEVELS
3. THIS DRAWING IS THE COPYRIGHT OF THE ARCHITECTS