

Do not scale from this drawing  
All dimensions to be checked on site

Notes:

15 mm Duraline board on 9.5 mm Fireline plasterboard  
fixed to framing over existing glazing. See drawing  
116246/BECK/17 of existing and proposed section

RECEIVED  
21 JUN 2012

Amendments:

Drawing type:  
**PLANNING**

Client: London Borough of Camden

Project:  
Condition and Sustainability Project  
Beckford Primary School, NW6 1QL

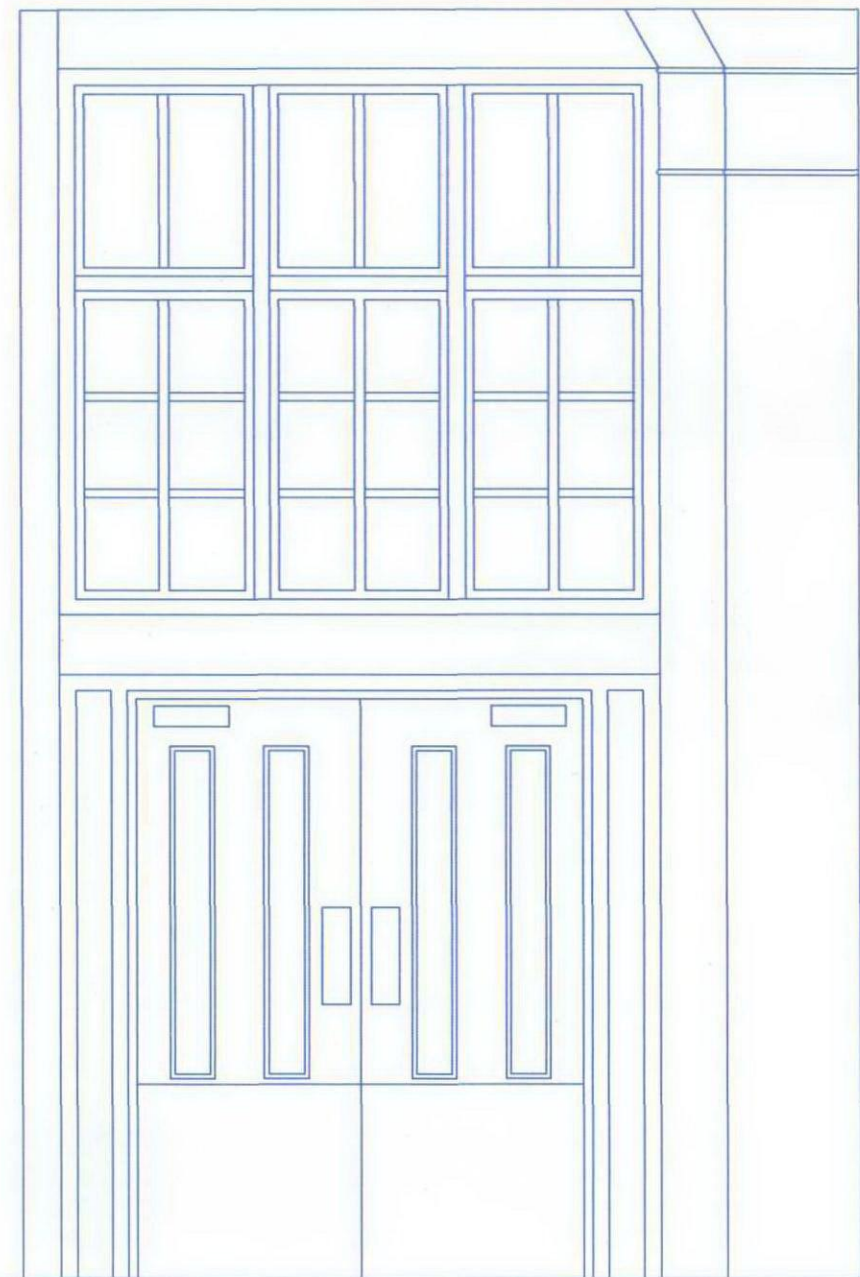
Title:  
Existing and Proposed Part Elevation  
to 1st Floor Hall Glazed Partition

Scale: 1:25 @ A3 Date: 20/06/12

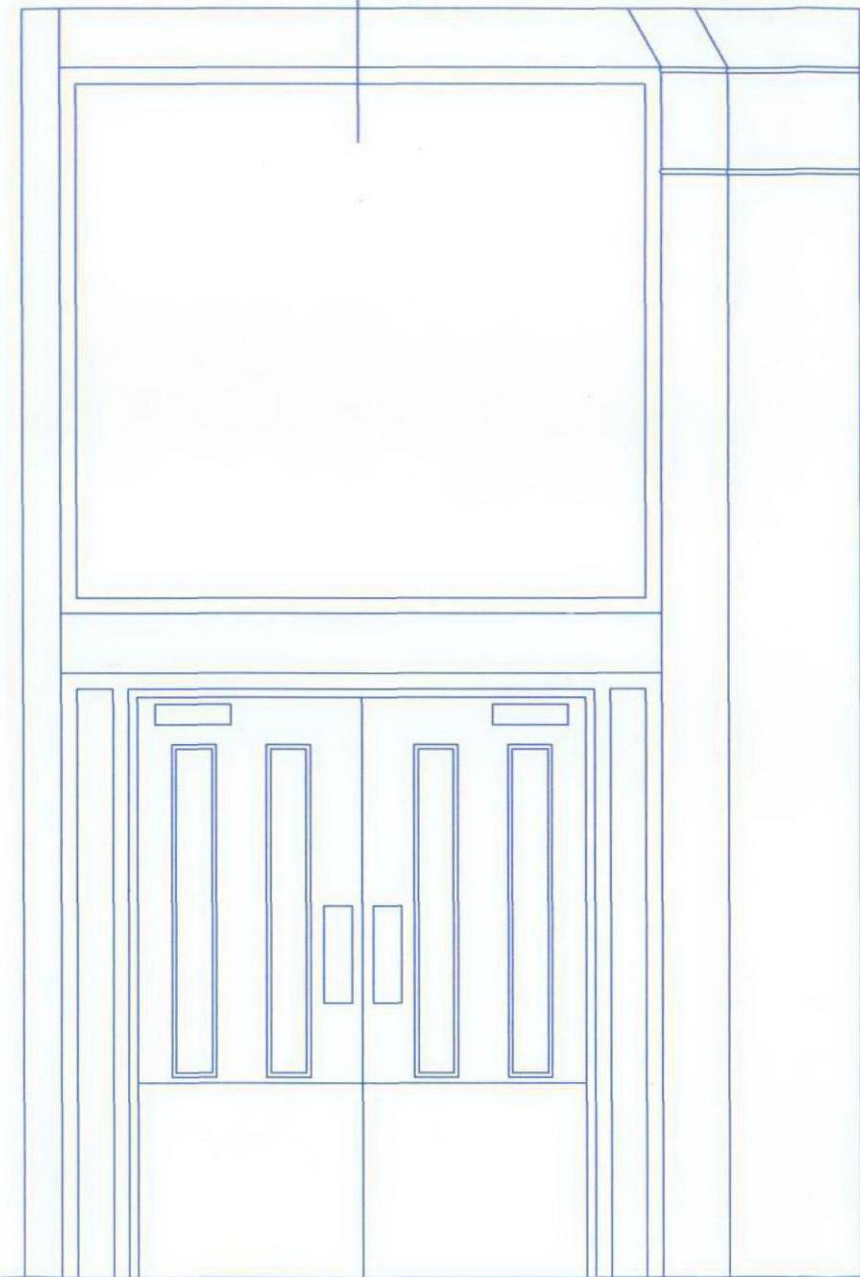
Drawn: PM Checked: MG

Dep. no: 116246/BECK/16

Rev:



Part 1st Floor Hall partition elevation as Existing



Part 1st Floor Hall partition elevation as Proposed

**Watts.**

Watts Group PLC  
1 Great Tower Street  
London EC3R 5AA  
T: +44 (0)20 7280 8000  
F: +44 (0)20 7280 8001  
W: [Watts-international.com](http://Watts-international.com)