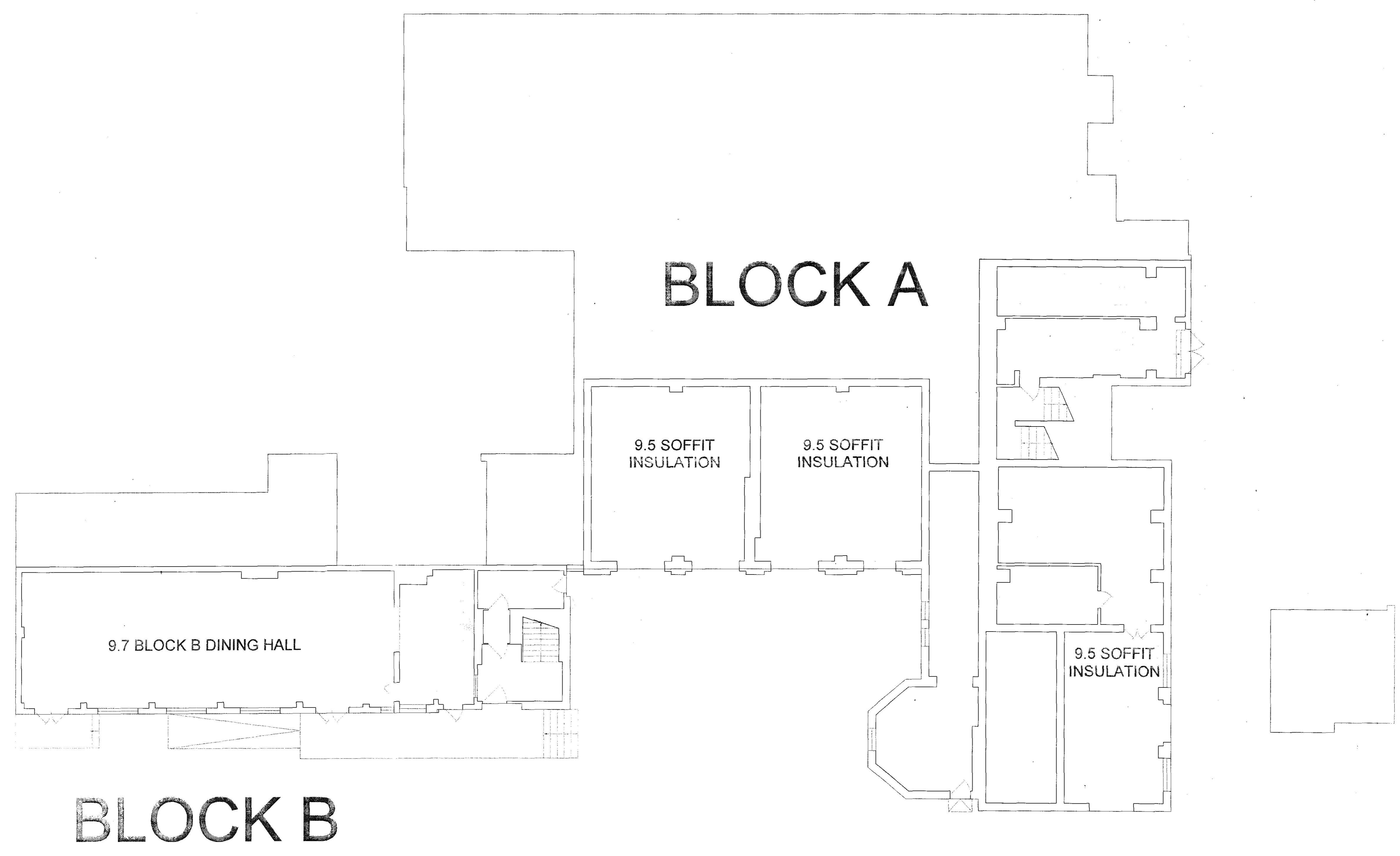


Do not scale from this drawing
All dimensions to be checked on site

Notes: Existing floor plan has been measured and provided by Camden, all information contained in this drawing (including digital data) should be checked & verified prior to any fabrication or construction.



Amendments:

A- Annotations added 15-05-2012

Drawing type:
PLANNING

Client: London Borough of Camden

Project:
Condition and Sustainability Project
Beckford Primary School
Dornfell Street, NW6 1QL

Title:
Existing First Basement
Floor Plan, Block A & B

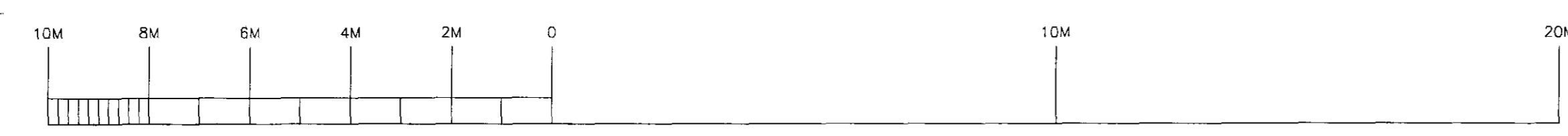
Scale: 1:100 @ A1 Date: 09/03/2009

Drawn: SC Checked: RJL

Drg.no: 116246/BECK/03 Rev: A

Existing First Basement Floor Plan Block A & B

SCALE: 1:100



Watts

Watts Group PLC T: +44 (0)20 7280 8000
1 Great Tower Street F: +44 (0)20 7280 8001
London EC3R 5AA W: Watts-international.com