



EXISTING ELEVATION  
@JUNE/2012



THE SHOP WINDOW IS STRENGTHENED WITH A METAL FRAME THICKNESS/ 55mm PAINTED IN DARK GREY (Ral 7015)

4 OUTDOOR SPOTS IP65, 230V/35W MAX FROM NAUTILUS SPIKE. used to illuminate the fascia sign

PROJECT NEW ELEVATION  
@JUNE/2012



BEFORE



NEW FASCIA SIGN IN 3D LETTERING (Aluminium) 40mm thick paint in Orange (Ral 2004)

NEW COLOR MASONRY BY FARROW AND BALL IN DARK RED COLOR REF. CARNADINE N°218

**PYLONES**  
éditeur d'objets à Paris

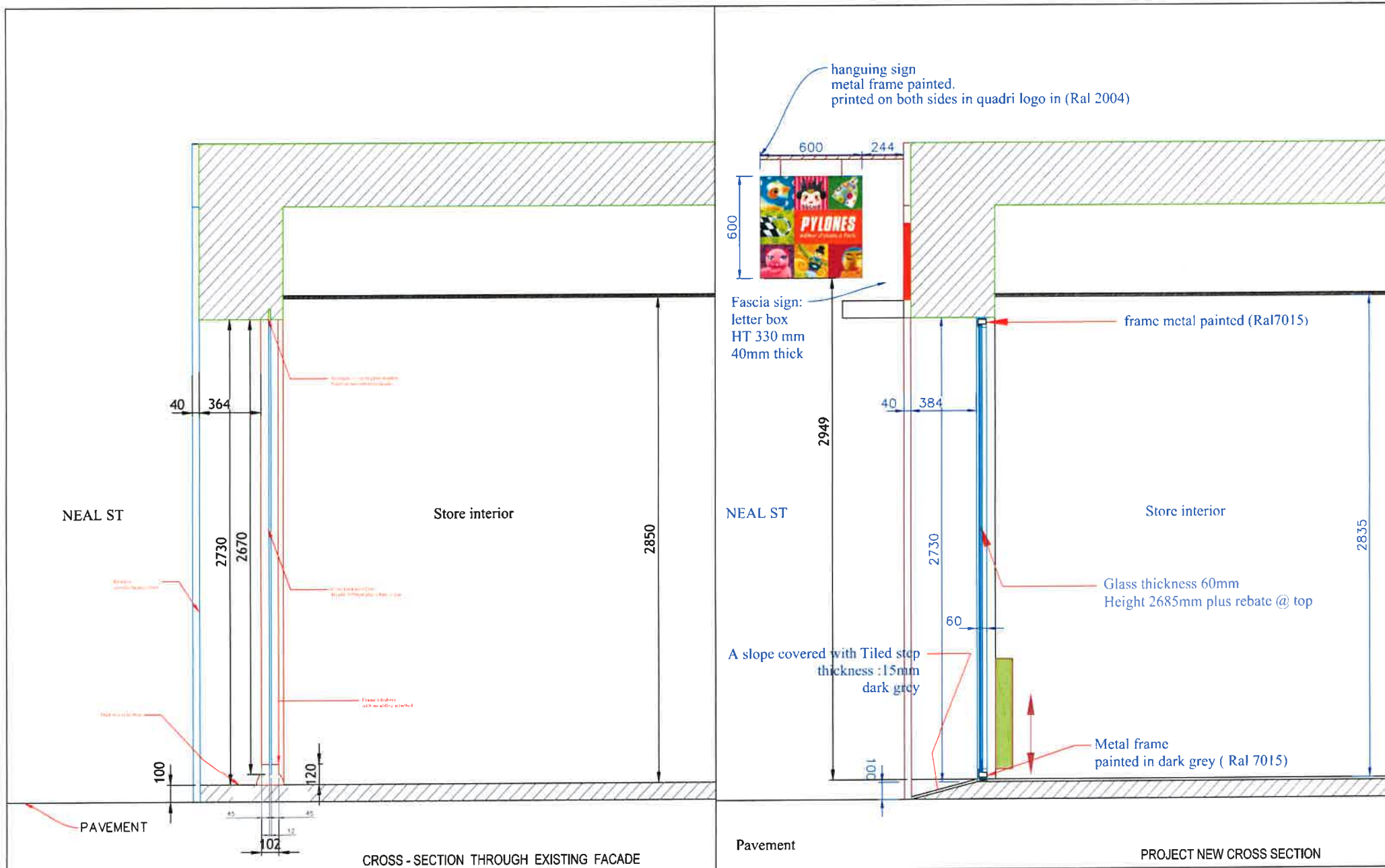
Department of Interior Design  
41 Avenue de l'Agent Sarre  
92700 COLOMBES FRANCE  
Phone: +33 1 56 83 81 11

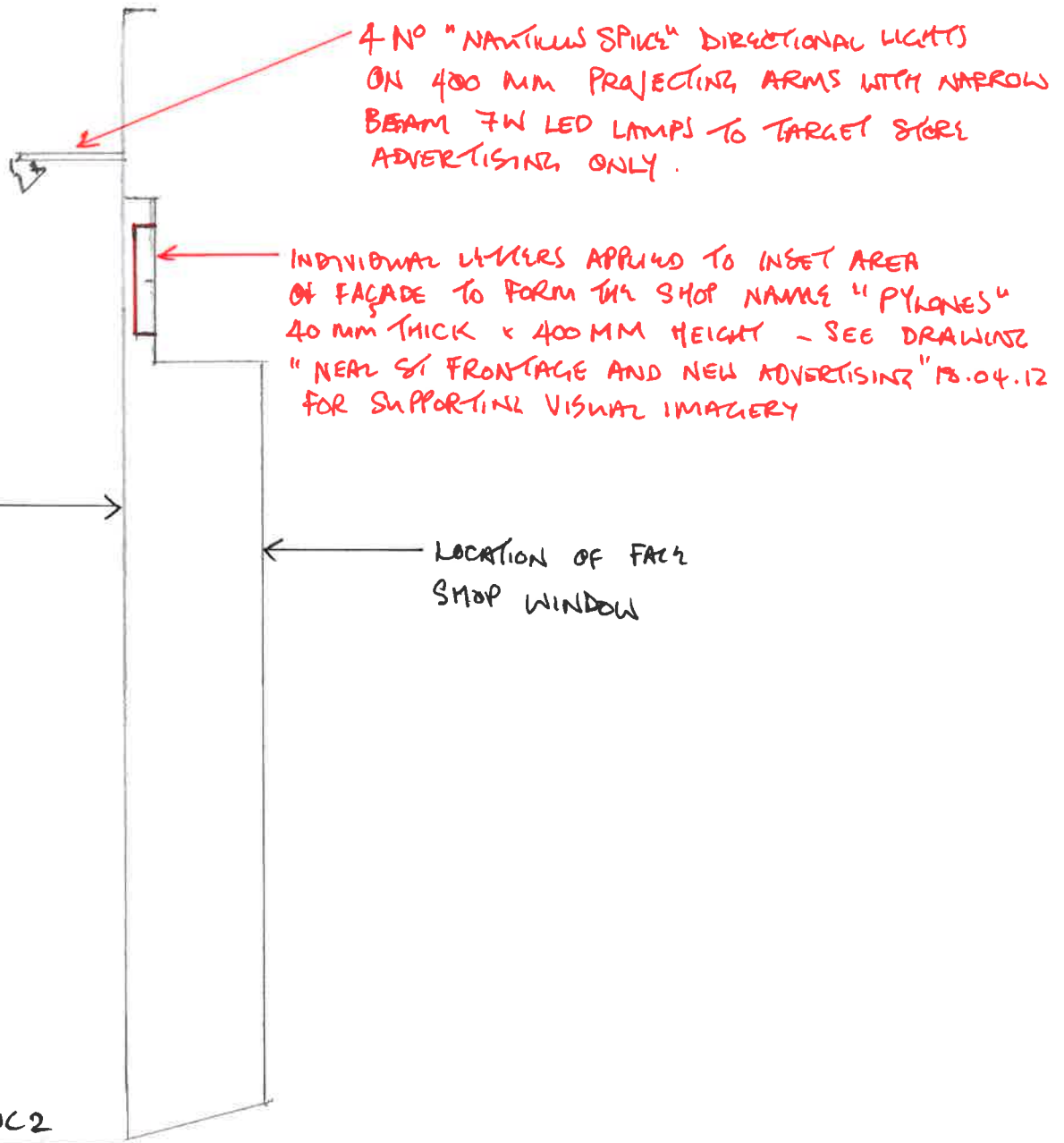
PROJECT:  
Refurbishment of the Neal Street Pylones Store

DRAWING TITLE: DRAWING 1.  
Neal Street Frontage and  
new advertising REVISION 2

SCALE:  
1/50

DATE:  
26 June 2012





CROSS-SECTION OF FACADE @ 54 NEAR ST WC2H 9PA  
 TO SHOW PROJECTION OF PROPOSED SIGN  
 ILLUMINATION AND LOCATION / THICKNESS OF  
 ADVERTISING LETTERS.

SCALE 1:25 @ A4  
 27.06.2012

DRAWING 3, REVISION 1