

Key for Internal meter locations and pipe-work indicated on drawings 1, 2 and 3:

Gas Meter within individual flat (if gas user): ■

Proposed gas Supply pipe-work internal and external: _____

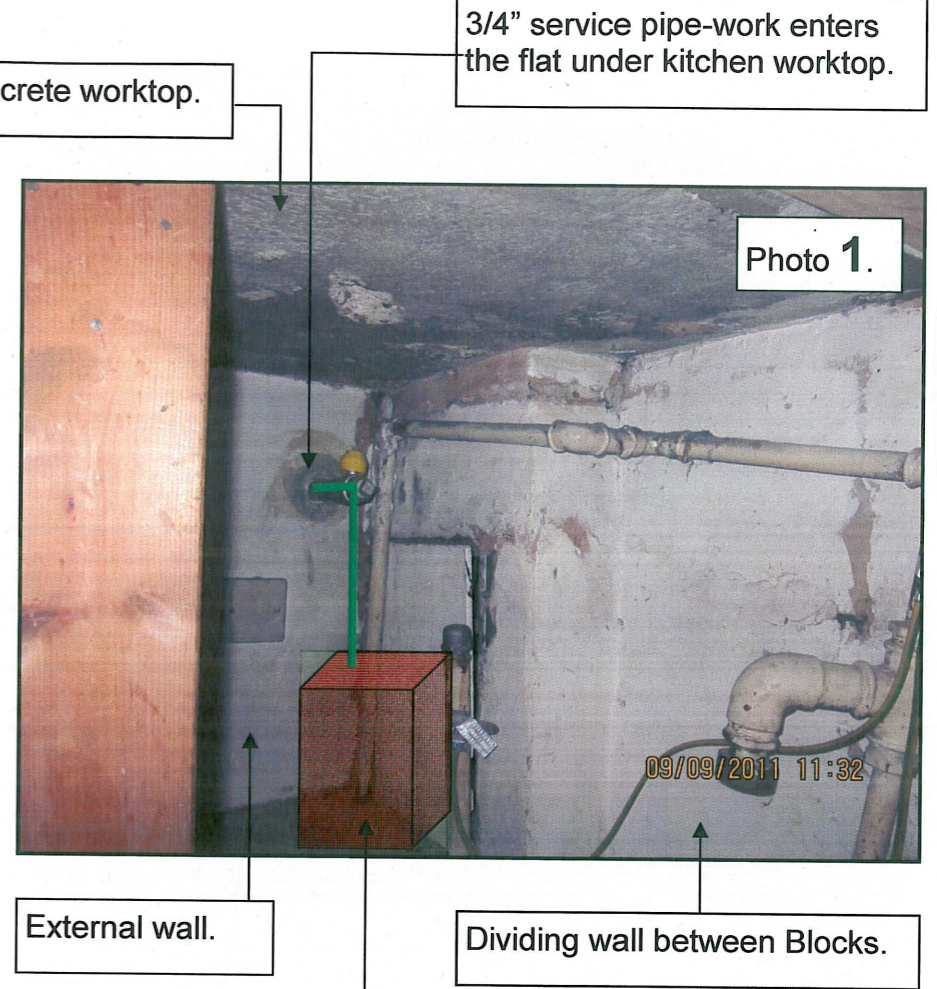
Vertical external gas riser Pipe-work: ●

Note: Only part floor plans of flat types are indicated in the location of proposed the gas plant.

22 Blocks (4, 7, 11, 14, 26, 30, 33, 37, 40, 44, 54, 58, 61, 65, 66, 72, 82, 86, 89, 93, 96, 100) have this configuration (44 flats). Typical example indicated with Flats a and b located across 3 Levels (L3, L4 & L5) and are mirror images (within each Block). Incoming gas supply is located on Level 5.

Levels 4 & 5* indicated.

Note: *Level 5 floor layout varies. Refer also to Sheet 3.



Proposed Gas Meter to be located under kitchen worktop (to be positioned where possible within the corner of the external wall and the dividing wall between two Blocks).



Blocks A, B, C, D & E, Rowley Way, NW8 (sheet 1 of 3). Scale: 1:100

Proposed internal pipe-work and gas meter locations. To be read in conjunction with Capita drawing CS/055613 for Application Reference 2012/1718/L.