

ALL SETTING OUT OF SCAFFOLD BY SITE ENGINEER

GENERAL NOTES

- 1) This drawing is confidential and the exclusive property of ACCESS SOLUTIONS
- 2) It must not be used except under a contract with ACCESS SOLUTIONS relating to the job in connection with which the drawing was issued.
- 3) Components manufactured in accordance with the drawing must not be used if they do not conform to the drawing.
- 4) It must not be copied or exhibited without written permission of ACCESS SOLUTIONS
- 5) Scaffold built with load bearing fittings, except intermediate bearers below platform level and boards fixed with non-load bearing fittings, must be erected in accordance with the drawing and subject to our conditions of Contract. Hire or Site use as applicable.
- 7) This drawing has been prepared from details supplied to us by the engineer/client, who should check that we have correctly interpreted and splicing sequences are correct and protectable details, erection and dismantling sequences are correct and protectable details, erection and dismantling sequences are correct and protectable details, erection or instruction of the customer's main Contractor, Architect, Engineer, Consultant or local authorities then on additional charge for the scope and specifications.
- 9) General scaffold specifications to EN 392001, BS EN 12811-1.
- 10) The customer is to ensure that the ground and/or base provided for our scaffold is adequate to support the loads to be applied without settlement and must provide any necessary spreaders.
- 11) If foundation levels are indicated on this drawing, the customer must set out and strictly adhere to the same.
- 12) The customer must ensure that the structure is of adequate strength to safely support the additional imposed loads.
- 13) SCAFFOLDING, DIMENSIONS, AND LOADINGS:—
Bay lengths not to exceed 2.2 M
Platform loading not to exceed AS SHOWN, kN/m²
Scaffold designed for AS SHOWN, simultaneously working lifts.
Also AS SHOWN, of additional boarded lifts.
Also AS SHOWN, of additional boarded lifts.
Wind loadings where applicable have been calculated in accordance with BS 5399: PART 2.
Maximum wind pressure allowed in the design shown on this drawing is—
kN/m²
Main contractor's attention is drawn to the fact that the loading provided for and that no eccentric loads are applied to the structure without specific reference to ACCESS SOLUTIONS
14) It is the responsibility of the client/enquirer to ensure that adequate facilities for tying the scaffold are made available and that the spacing of ties not to exceed—
15) Spacing of ties not to exceed—
vertically,
16) Anchorage for ties to be provided by client at points shown * on special type and should preferably be of the cast in or drilled in standards whenever possible.
17) All ties must be secured with right angle couplers and to the standards whenever possible.
18) All dimensions are as stated or as calculated. Drawings must not be scaled.

Special Notes :

DRAWINGS IN THIS SERIES :

FOR APPROVAL

ACCESS SOLUTIONS

VIP Industrial Park
Anchor & Hope Lane
London SE7 7TE
Tel: 020-8853 8840
Fax: 020-8233 3197
email:enquiries@access-solutions-scaffolding.co.uk

TITLE
SECTIONS AND ELEVATIONS
GAS PIPE FITTING TOWERS
ROWLEY WAY – SHEET 3

CLIENT
NATIONAL GRID

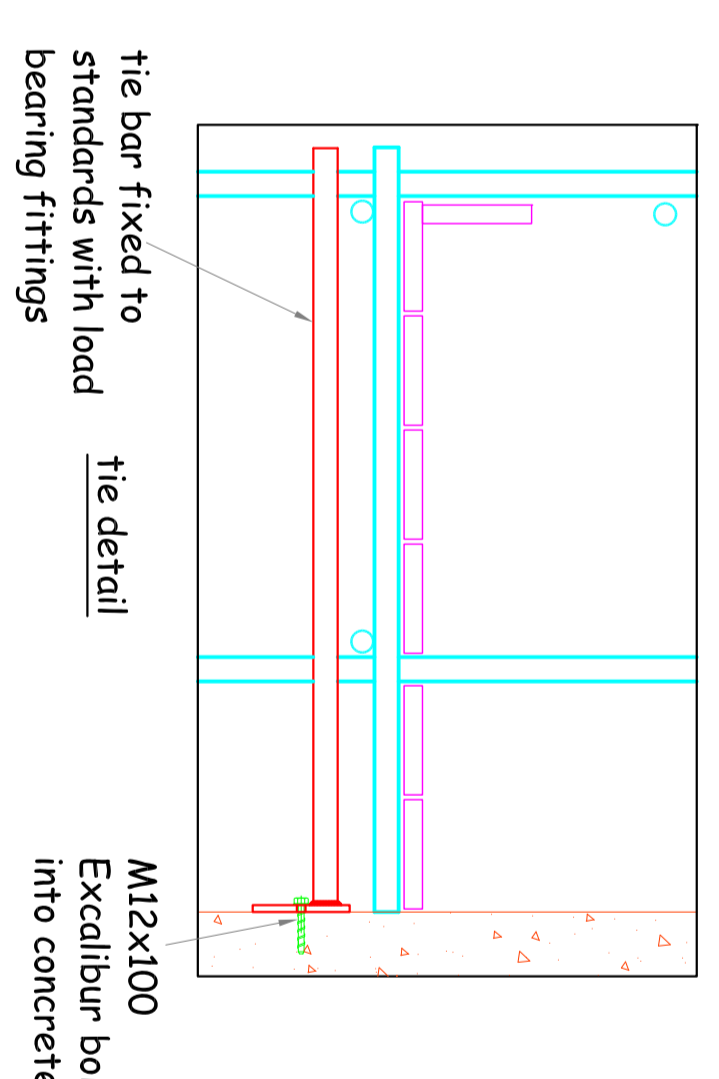
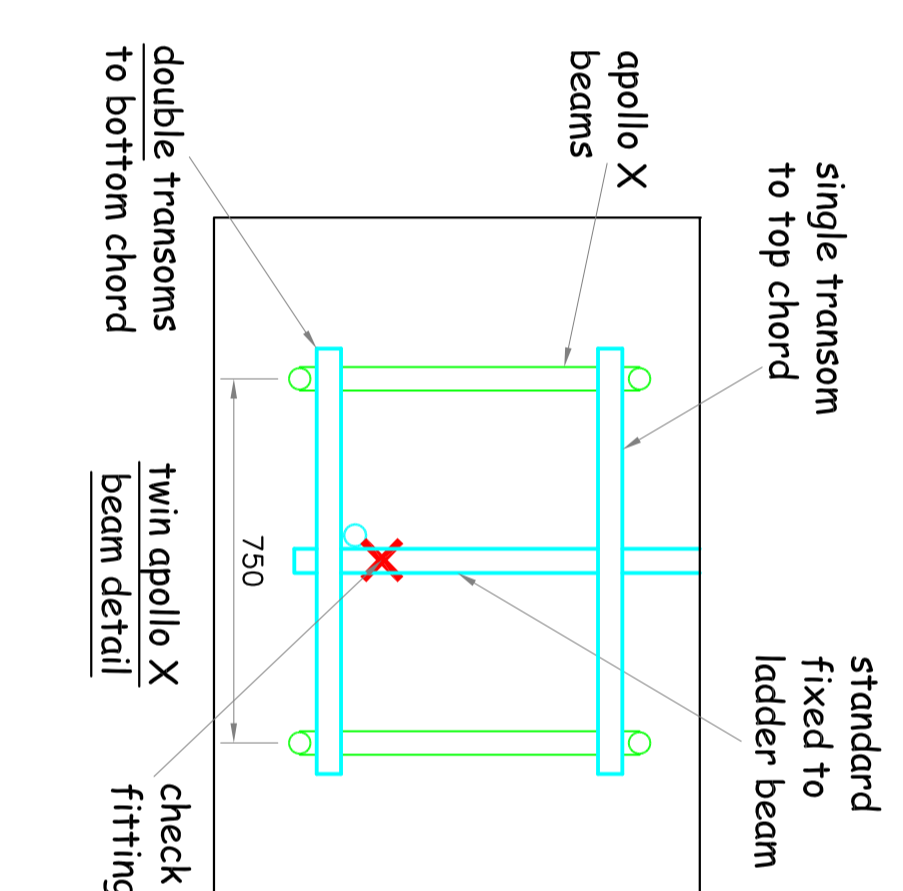
THIS DRAWING HAS BEEN PRODUCED BY
CONTRACT DESIGN SERVICE
69 – 71 HIGH STREET,
ESSEX,
SITTINGBOURNE, SS17 7TE

TEL: 01372 748217 FAX: 01372 740701 e-mail: enquiries@contract-design.co.uk

DRAWN BY: CHECKED BY: APPROVED BY:

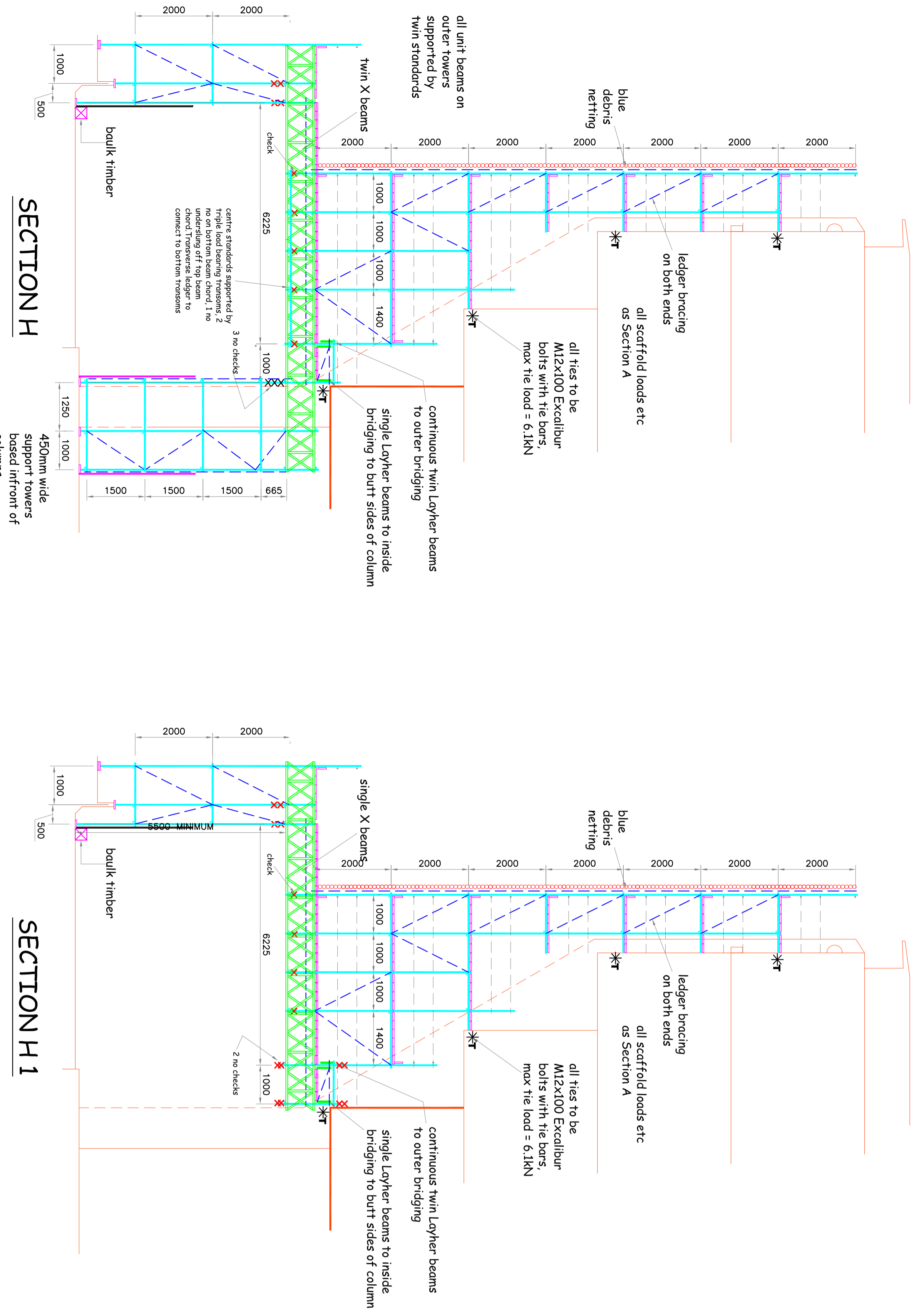
DATE: 12.06.12 DRAWING No. AS/6736/03

SCALE: 1:75



ELEVATION FOR C

ELEVATION FOR A B & D



SCAFFOLDERS TO CONFORM TO SG4-10