

**GENERAL NOTES**

NOTE:  
This drawing is to be read in conjunction with standard details and specifications.  
All dimensions are to be verified on site.  
All works are to comply with current building regulations.

**SETTING OUT**  
THE CONTRACTOR SHALL NOTE THAT ALL DRAWINGS HAVE BEEN PREPARED FROM DIGITAL SURVEY DATA AND AS SUCH ACCURACY CANNOT BE ASSURED. IT IS THE MAIN CONTRACTOR'S RESPONSIBILITY TO PERFORM ALL NECESSARY CHECKS TO ENSURE ACCURACY OF CONSTRUCTION DRAWINGS AND ACTUAL CONSTRUCTION. ALL MAIN CONTRACTOR CONSTRUCTION DRAWINGS (TO A MINIMUM SCALE OF 1:250) REQUIRE WRITTEN APPROVAL BY ARCADIA GROUP LTD PRIOR TO PROCEEDING WITH INSTALLATION. IN THE EVENT OF ANY DRAWING DISCREPANCIES IT IS THE MAIN CONTRACTOR'S SOLE RESPONSIBILITY TO HIGHLIGHT THEM IN A TIMELY MANNER TO ARCADIA GROUP LTD TO ENSURE ANY DISCREPANCIES CAN BE SUITABLY ASSESSED PRIOR TO CONSTRUCTION WORKS.  
ANY MATERIAL CHANGES MADE BY THE MAIN CONTRACTOR TO THE DESIGN INFORMATION ISSUED BY ARCADIA GROUP LTD TO BE RECORDED IN WRITTEN APPROVAL IN ADVANCE PRIOR TO PROCEEDMENT OR THE MAIN CONTRACTOR'S RESPONSIBILITY TO DETAIL ALL NECESSARY TECHNICAL ELEMENTS FOR EXAMPLE: MAKE-UP FLOOR SCREENS, STRUCTURAL WORKS, EXPANSION/ADAPTATION REQUIREMENTS OF ELECTRICAL SUPPLY OF BUILD TO FACILITATE THE INSTALLATION OF DESIGN INTENT ELEMENTS AS DETAIL.

**SPECIFICATION & STANDARD DETAIL DOCUMENTS**  
THIS DRAWING SHALL BE READ IN CONJUNCTION WITH STANDARD DETAIL WORKS AND SPECIFICATIONS OF WORKS WHERE PROVIDED BY THE ARCADIA GROUP LTD.

**FINISHES SCHEDULE**  
REFER TO CURRENT FINISHES SCHEDULE FOR SPECIFICATIONS OF FINISHES REFERENCED WITHIN THIS AND RELATED DRAWING. ALL FINISHES TO BE SUBMITTED AS ACTUAL SAMPLES TO ARCADIA GROUP LTD FOR APPROVAL PRIOR TO PROCEEDMENT OR INSTALLATION.

*It is the contractor's responsibility to ensure that all elements of the project that are not shown as per the design, design and details within this drawing are completed in accordance with the design and details within this drawing. The contractor shall be responsible for the design and details of any elements not shown in this drawing. The contractor shall be responsible for the design and details of any elements not shown in this drawing. The contractor shall be responsible for the design and details of any elements not shown in this drawing.*

Checked By

CAD	DATE	DESIGN	DATE

M	L1	C & B MAGNETIC GRAPHIC NOTE ADDED	PTG	28/03/12
G	L2	BRAND COMMENTS ADDED	PTG	21/02/12
F	L1	REVISED AS BRIBLED	PTG	09/02/12
E	L1	FULL BRG ISSUE	PTG	03/02/12
C	L1	REVISED TO SITE / BRAND COMMENTS	PTG	26/01/12
B	L1	FIRST FIT OUT BACK ISSUE	PTG	23/01/12
		ISSUE REVISION		

This drawing is the property of Arcadia Group Limited. Copyright is reserved. The drawing is issued on the condition that it is not copied, reproduced, retained or disclosed to any unauthorised person, either wholly or in part.



STORE DEVELOPMENT  
COCKRIE HOUSE, 79 BETHNERS ST, LONDON EC1N 1NL  
TELEPHONE 0207 636 8040 FAX 0207 291 2940

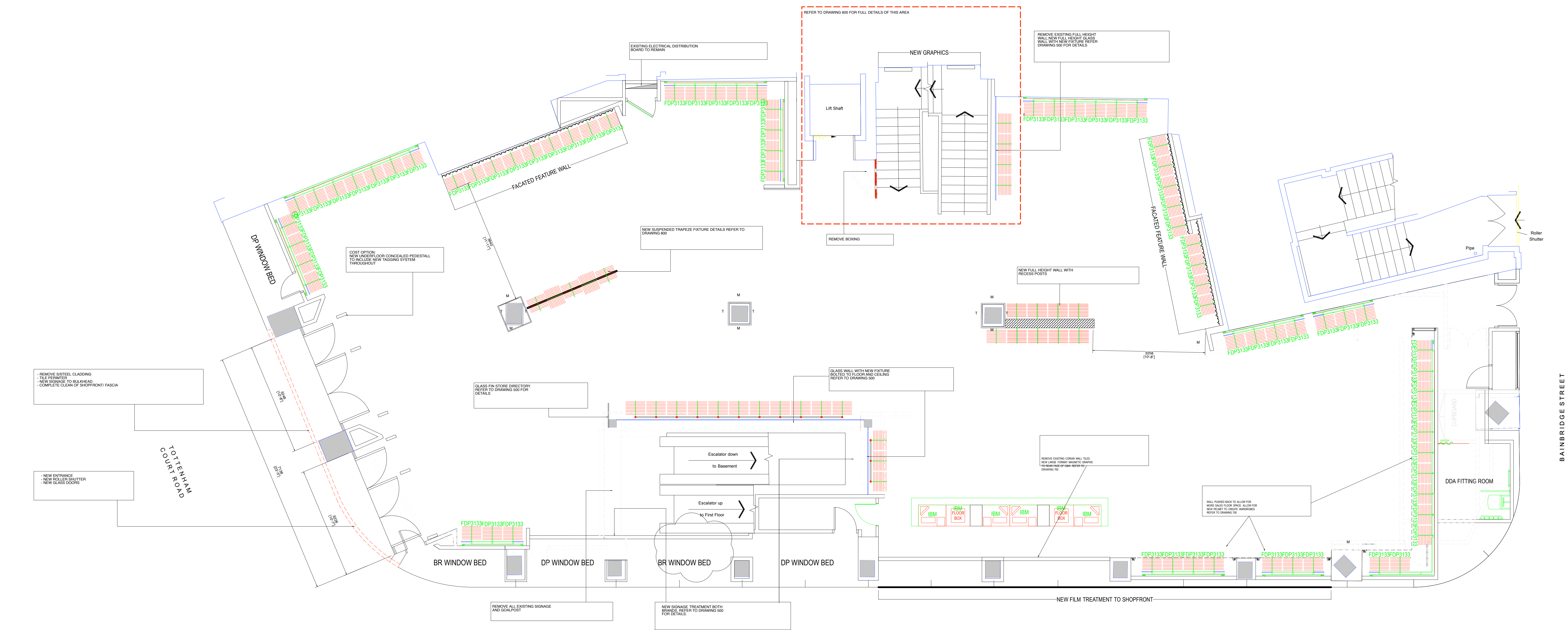
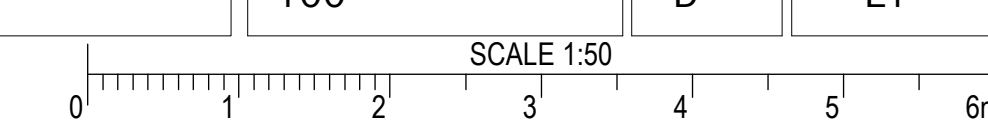
Prepared by

**DOROTHY PERKINS BURTON**

Project  
**DP/ BR 118 - 132 NEW OXFORD ST. LONDON WC1A 1HN**

Title  
**GROUND FLOOR AS PROPOSED**

Drawn By	-	Frame size	A0
Scale	1:50	Date	APRIL 2012
CAD Ref No.		Prop ID.	
Drawing No.	100	Rev.	D
		Status	L1



**GROUND FLOOR GENERAL ARRANGEMENT**  
SCALE 1:50

NEW OXFORD STREET

**DOROTHY PERKINS PROPOSED SALES AREA = 3981 sq ft**  
**BURTON PROPOSED SALES AREA = 125 sq ft**

**GROSS INTERNAL SALES AREA = 4417 sq ft**  
**INCLUDING FITTING ROOMS AND WINDOW DISPLAYS**

**GENERAL NOTES:**

**WALL FINISHES**  
DECORATION THROUGHOUT SALES FLOOR, WINDOWS, STAIRCASE AND FITTING ROOMS

**COLUMNS**  
ALL COLUMNS TO BE RECLAD AS TIGHT AS POSSIBLE WITH 2X SIDES MIRROR 2X SIDES FLOOR TILE

**LIGHTING**  
NEW ILLUMINATED LIGHTING SCHEME THROUGHOUT

**FLOORING**  
NEW CERAMIC FLOORING THROUGHOUT SPECIFICATION TBC

**CEILING**  
NEW CEILING THROUGHOUT. TROUGH DETAILS AS PER STRATFORD

**SHOPIFFING**  
REMOVE ALL CORNER BOXINGS AND MAKE GOOD. REMOVE POSTAL AREA ON ESCALATOR AND MAKE GOOD. PUSH BACK CASH AND WRAP WALL TO SIT FLUSH WITH COLUMNS. ALL V.I.O. ILLUMINATED SYSTEMS TO BE INSTALLED. 2% OF FACIATED WALLS TO BE INSTALLED.

**STAIRCASE/LIFT**  
REMOVE WALLS  
- FLOORING TILES TO TREADS  
- REMOVE EXISTING BALUSTRADES AND HANDRAILS  
- REPLACE WITH ALL TOUCHED GLASS BALUSTRADES AND STEEL HANDRAILS THROUGHOUT  
- LIFT PANELS TO BE REPLACED INSIDE AND OUT