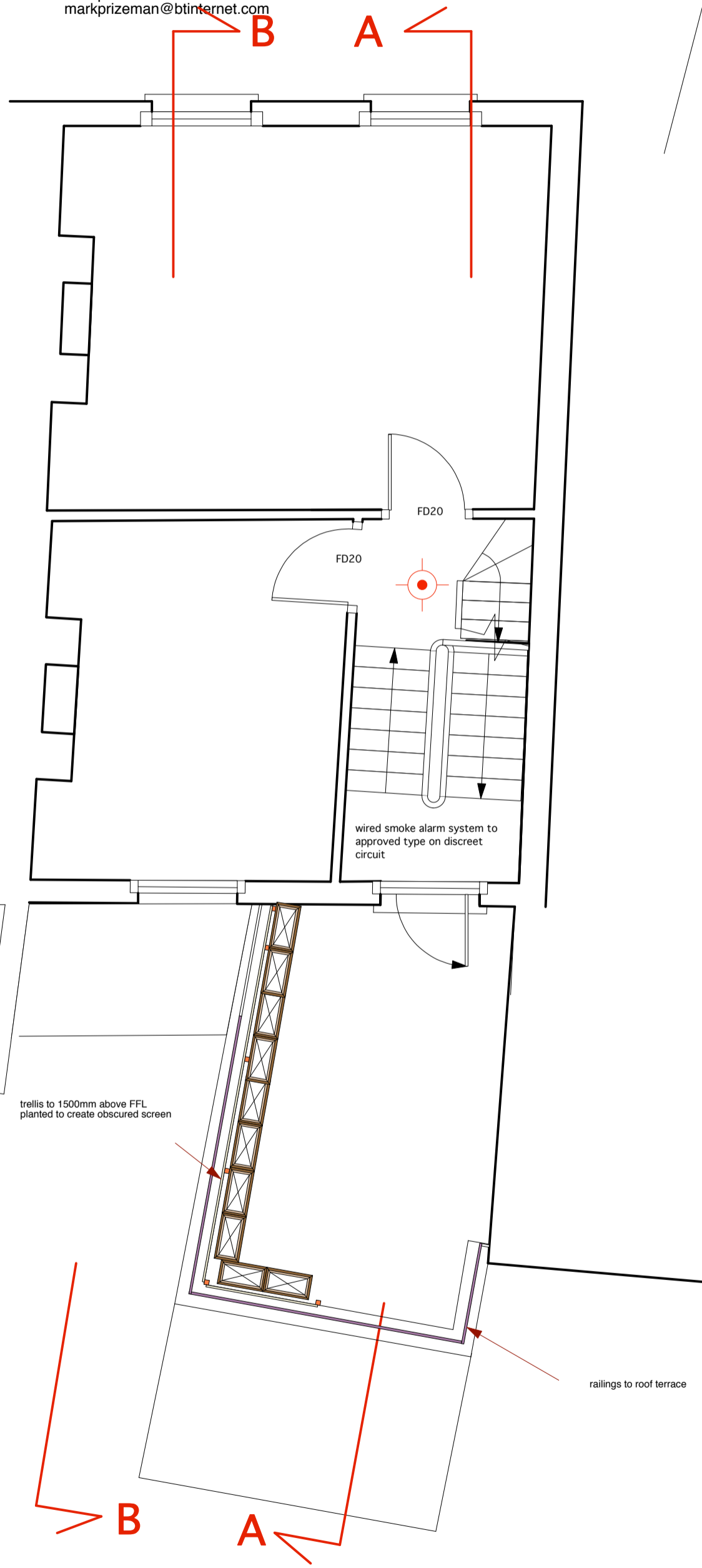
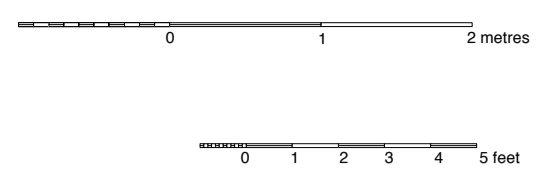
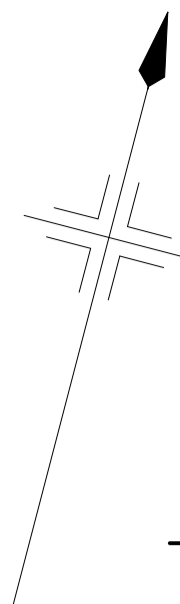


POW 2D - 47 PRINCE OF WALES ROAD, LONDON, NW5 3LJ

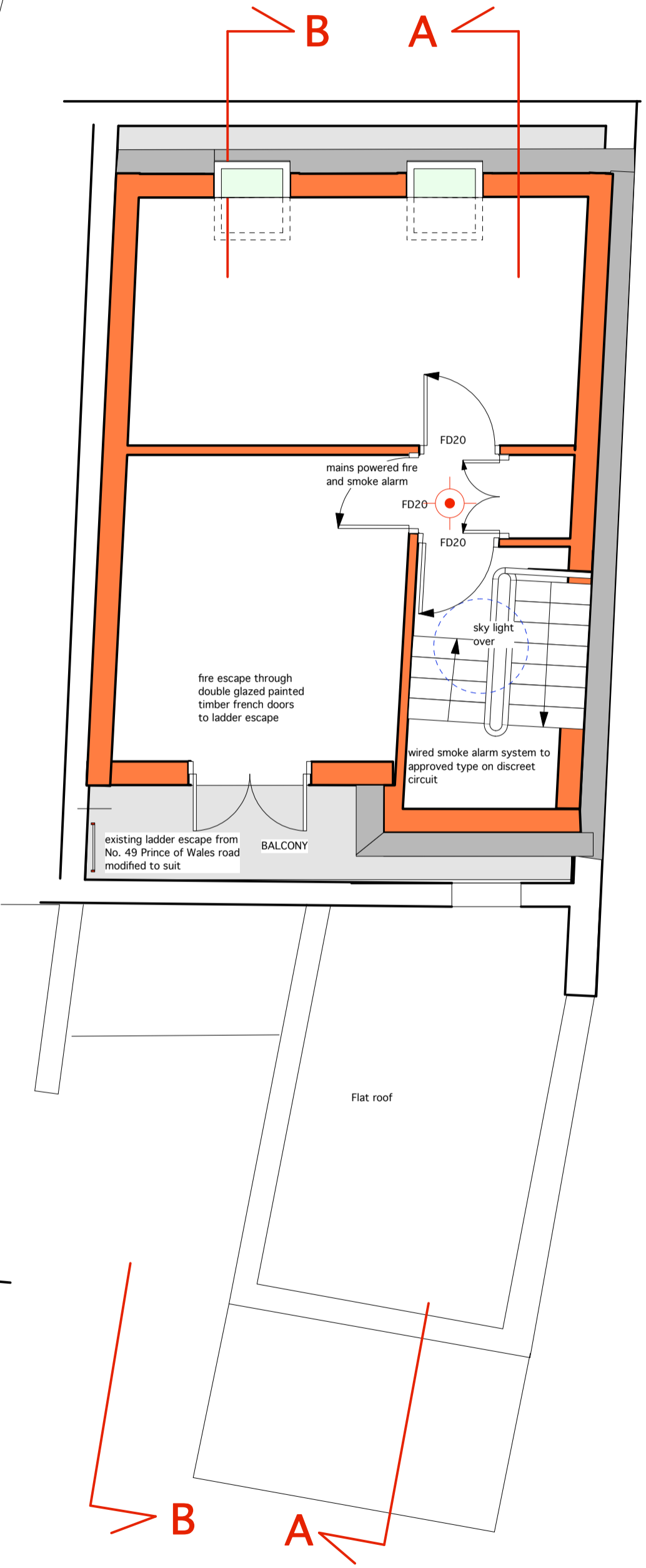
House remodelling for Mark Williams
EXISTING SECOND & ATTIC FLOOR PLANS
Scale 1:50@A3

27th April 2008
8th September 2008
7th December 2009
5th July 2012
10th July 2012

Mark Prizeman AADipl RIBA, chartered architect
13 Stockwell Park Road, London SW9 0AP
TEL: 020 7735 2315
MOB: 07990 525 869
E-MAIL: markprizeman@hotmail.com
markprizeman@btinternet.com



EXISTING SECOND FLOOR PLAN



EXISTING ATTIC FLOOR PLAN