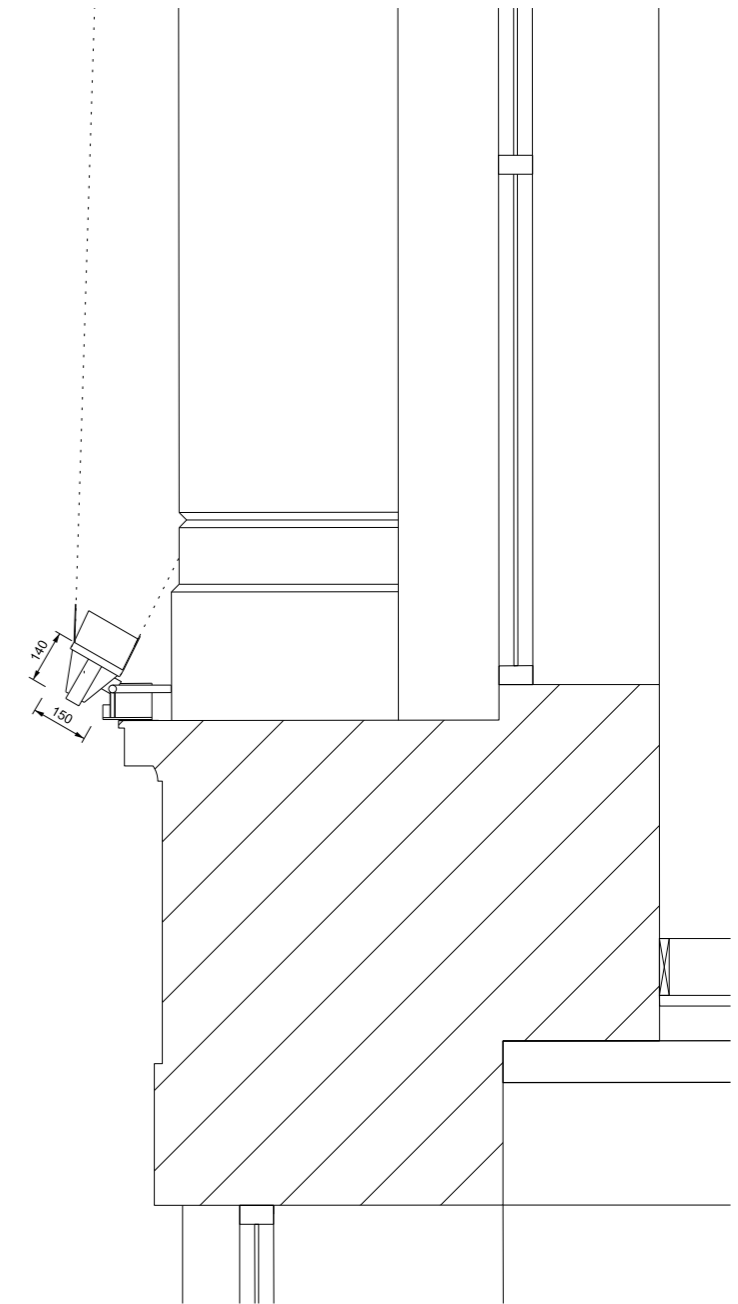


C Photomontage showing AWA 15003 halide luminaires lighting 4 main columns - 3rd floor



B LTS LIGHTING - Type HH - AWA 15003
150w grey metal halide luminaire with aluminium die cast body, wide beam angle reflector and fitted with shutter blades and side blades



D Section A-A showing AWA 15003 halide luminaire lighting column - 1:20

A Plan showing location of 4 No. AWA 15003 halide luminaire 4th floor - 1:50

REV.	DESCRIPTION	DATE	DRN BY	CKD BY
B	LTS Light note ammended	04.07.12	RJ	MA
A	Handrail ammended. NBS Notes added.	19.09.08	KA	JK

PROJECT	AFRICA HOUSE
TITLE	COLUMN LIGHTING 3rd FLOOR
CLIENT	DAEJAN INVESTMENTS (GROVE HALL) LIMITED

JOB No.	4215	DRAWING No.	A(0)092	REVISION	B
SCALE	1:50 + 1:20 @ A3	DRAWN BY	IC	CHECKED BY	MA
STATUS	CONSTRUCTION	DATE	MAY 2012		

jmarchitects

2nd Floor
Threeways House
40-44 Clipstone Street
London
W1W 5DW
T: 0207 580 5330
F: 0207 436 5348
lon@jmarchitects.net
www.jmarchitects.net