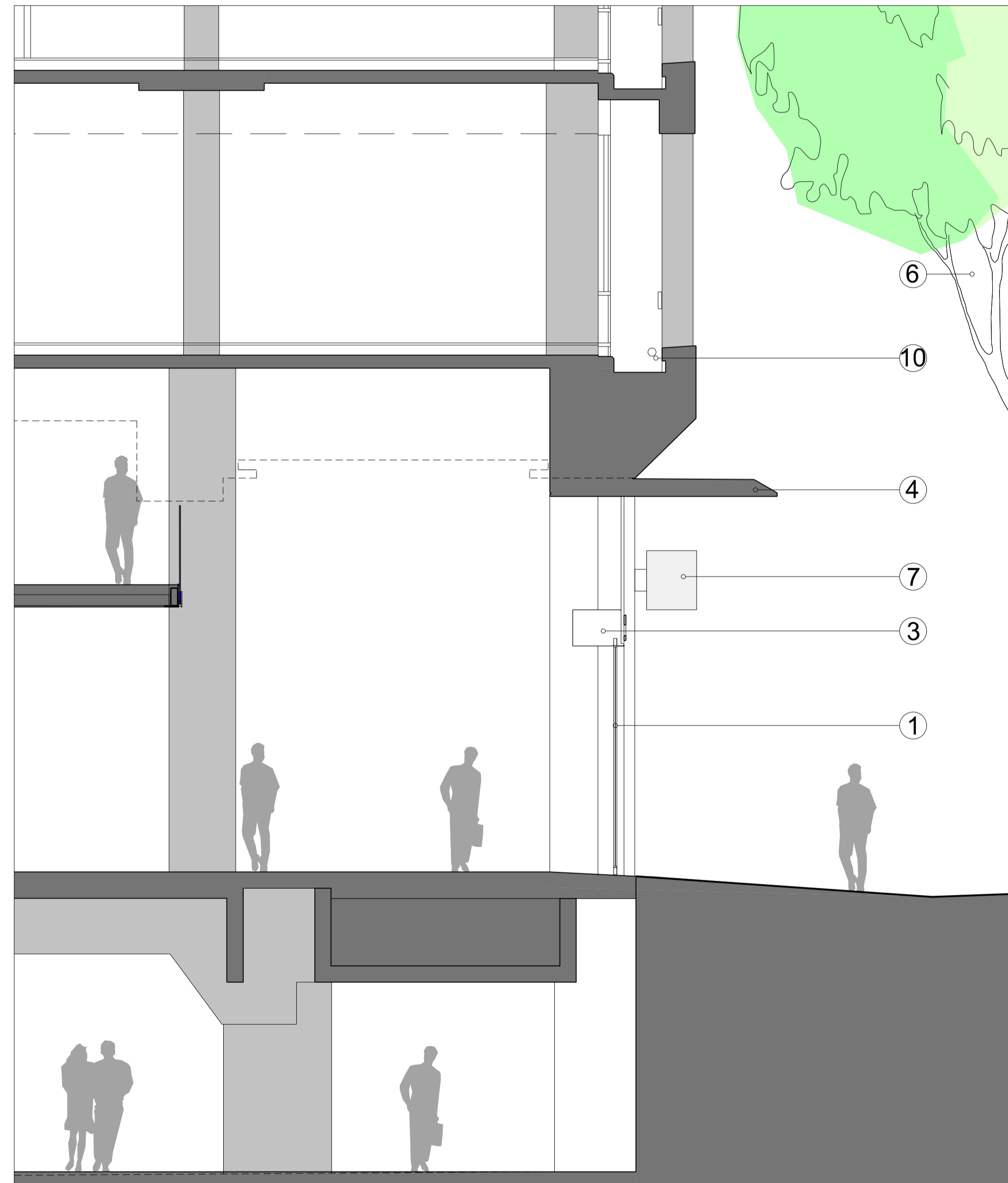


SITE KEY



1
PL.110 Proposed detailed elevation 1.50 @ A1



2
PL.110 Proposed detailed section 1.50 @ A1



PROPOSED

Notes:

Detail Sections/Elevations for indicative purposes only

Materials Key

- ① Proposed glazed shop front
- ② Existing granite to column
- ③ Glazing transom/signage band
- ④ Proposed canopy
- ⑤ Integrated lighting to column detail
- ⑥ Existing trees
- ⑦ Projecting signage to shop front with integrated lighting
- ⑧ Automatic sliding glass doors
- ⑨ Metal skirting / kick plate detail
- ⑩ Position for 'effect' tree lighting within existing balcony zone

A 09.07.12 Issued for planning
 - 16.03.12 Issued for planning

Revision:

ORMS

Architecture
 Design

1 Pine Street London EC1R 0JH
 T 0207 833 8533 F 0207 837 7575
 E orms@orms.co.uk

Project CENTRAL CROSS

Drawing title Indicative Bay Elevations and Sections

Scale 1:50 @ A1 Drwg. No.

Date December '11 1917 PL 110 Rev. A

Status For information For tender For construction

Do not scale. All dimensions to be confirmed on site. Information contained in this drawing is the sole copyright of ORMS Designers & Architects Ltd. and is not to be reproduced without permission.