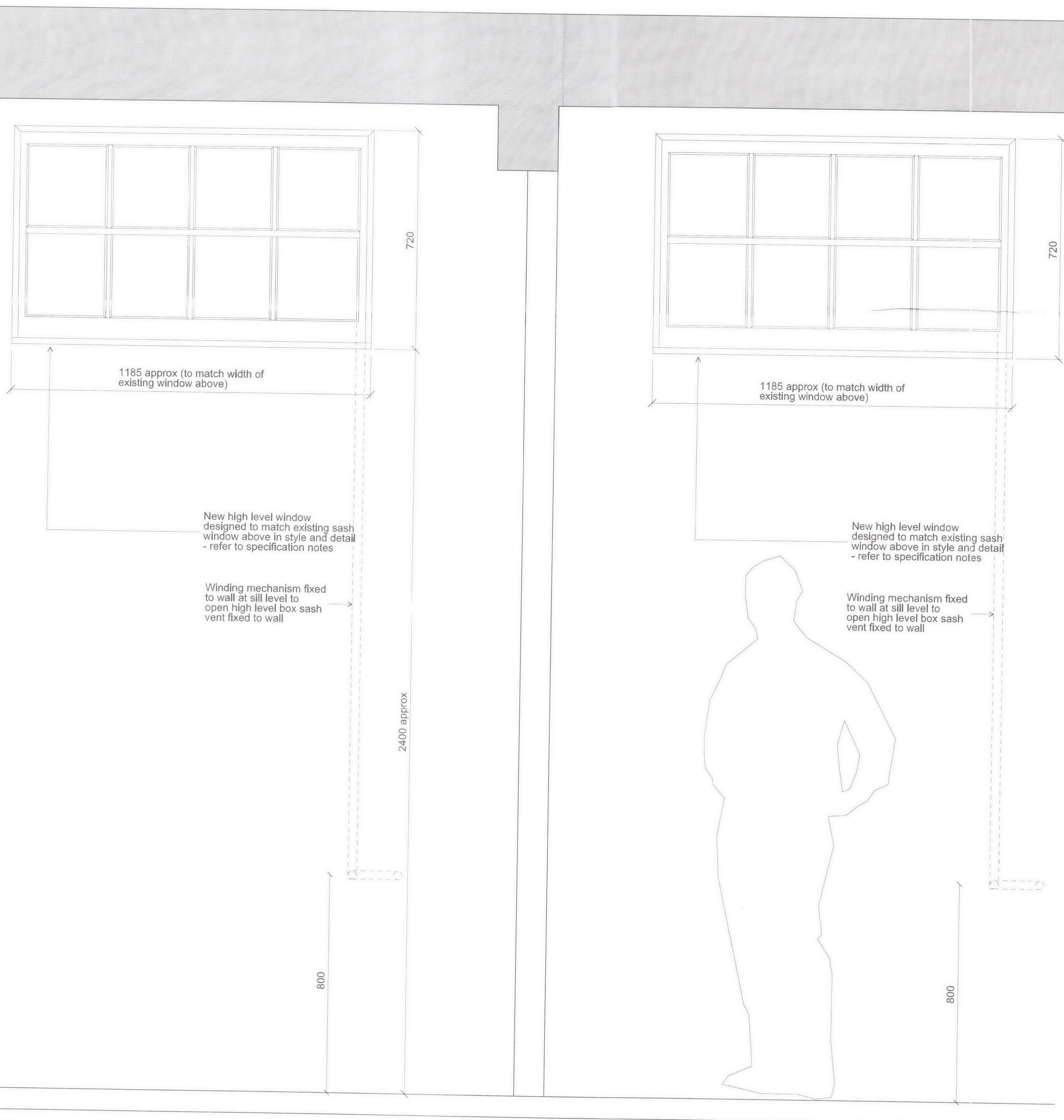
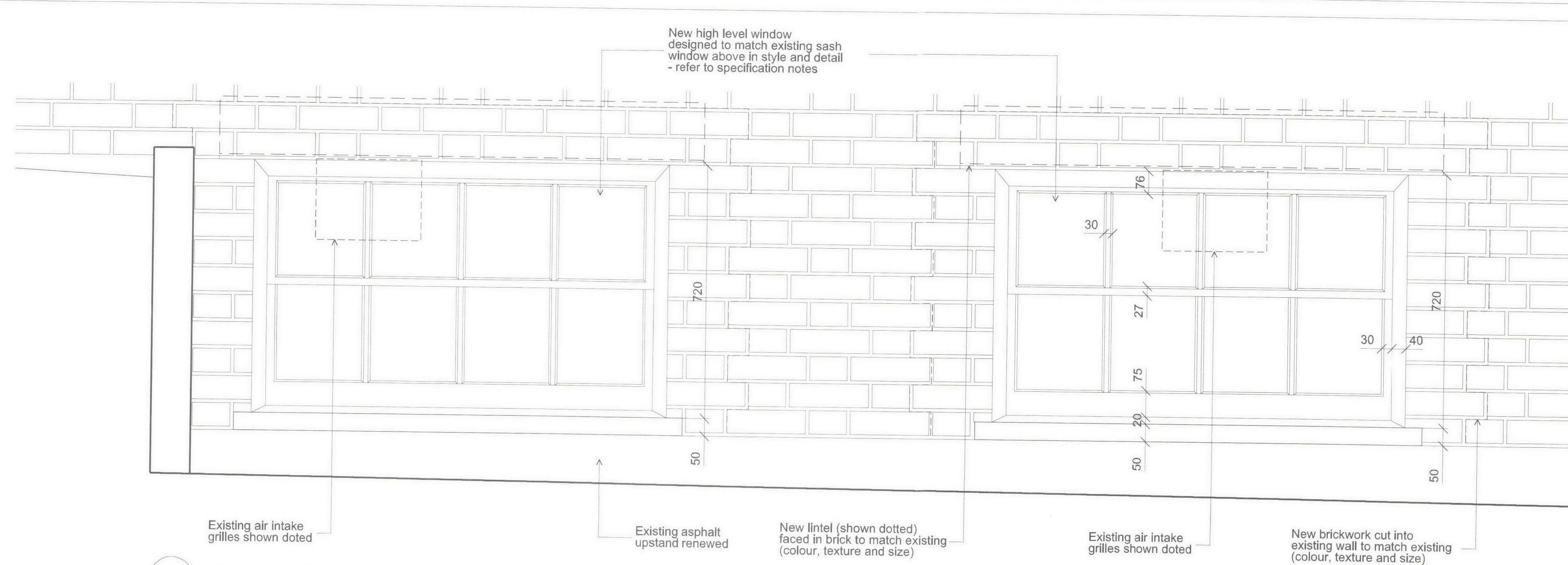


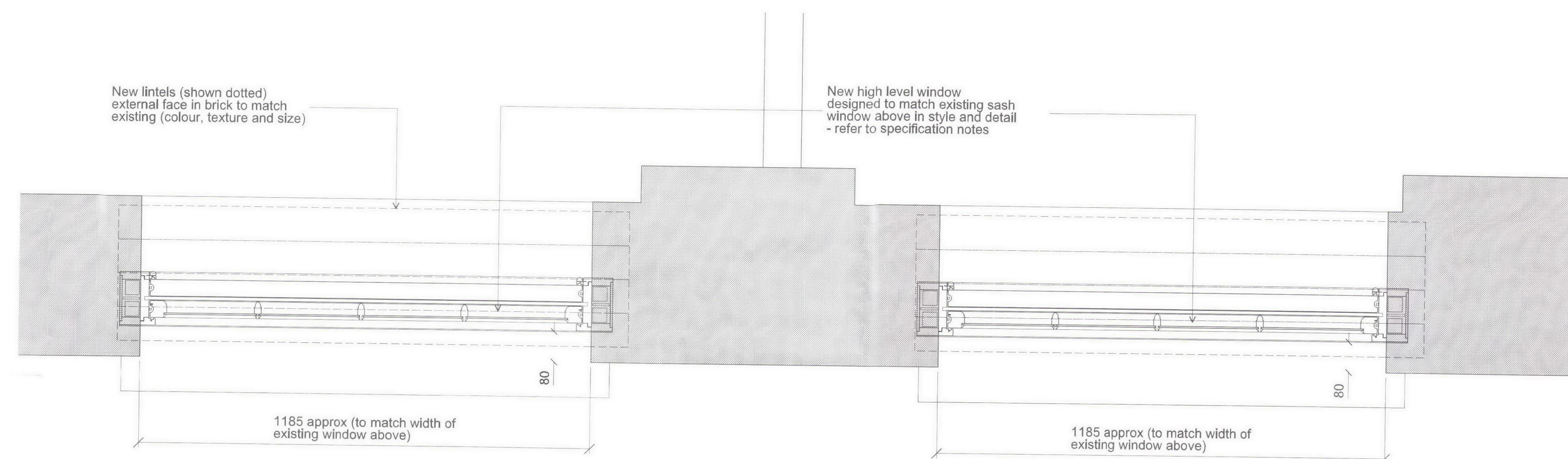
4  
PL.23 CENTRAL BLOCK WEST PART SECTION B-B - PROPOSED  
PLANNING SERIES 1:10@A1



3  
PL.23 CENTRAL BLOCK WEST PART SECTION A-A - PROPOSED  
PLANNING SERIES 1:10@A1



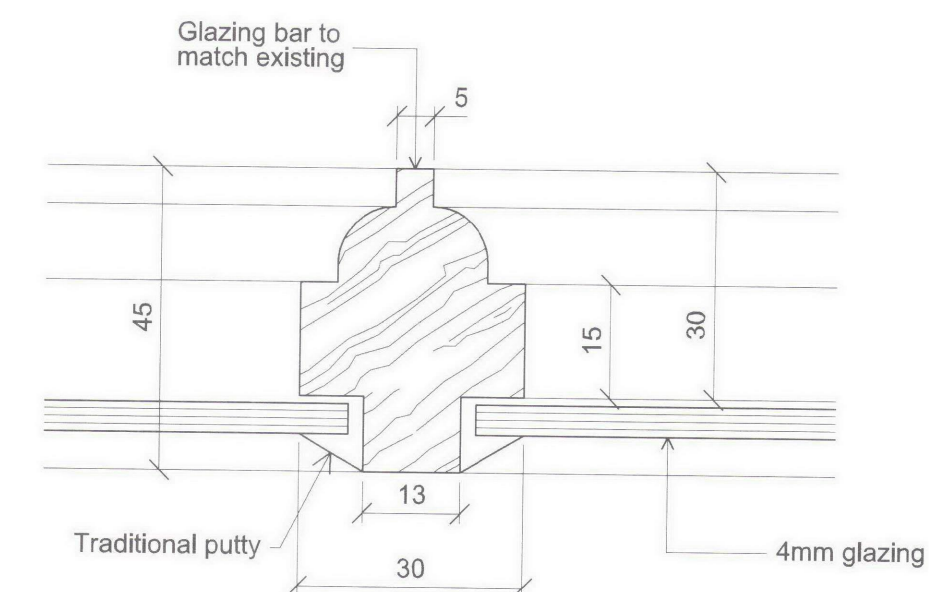
2  
PL.23 CENTRAL BLOCK WEST PART SECTIONAL ELEVATION - PROPOSED  
PLANNING SERIES 1:10@A1



1  
PL.23 PROPOSED LOWER GROUND FLOOR PART PLAN  
PLANNING SERIES 1:10@A1

#### SPECIFICATION NOTES ON NEW HIGH LEVEL WINDOWS:

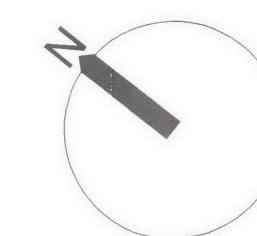
1. New high level window designed to match existing painted box sash window above in both style and detail
2. Frame, head, jamb and cill to match as close as possible existing sash windows in dimensions
3. Sash top, middle, bottom rails and stiles to match as close as possible existing sash windows in dimensions
4. Sash profile OVOLO - glazing bars to match existing profile - refer to detail 5 to right indicating existing sash window glazing bar profile
5. Glazing - single 4mm glazed with traditional hand-faced putty
6. All hardware & fittings to match finish of existing hardware
7. Window is high level and not easily accessible from the sub-basement level: therefore internal opening mechanism proposed - Mighton 'Fenestrator' winder designed for sash window fixed to wall to provide winder at sill level



5  
PL.23 PROPOSED GLAZING BAR DETAIL  
PLANNING SERIES 1:1@A1

Notes:

Revision:  
02.07.12 Issued to discharge Listed  
Building Consent Condition 2



ORMS

Architecture  
Design

1 Pine Street London EC1R 0JH  
T 0207 833 8533 F 0207 837 7575  
E orms@orms.co.uk

Project University College School, London

Drawing title Proposed Lower Ground Floor  
High Level Windows Details  
for Listed Building Consent

Scale 1:10/1:1 @ A1 Drwg. No.

Date June '2012

1937.PL.023 Rev. -

Status ☒ For information ☐ For tender ☐ For construction

Do not scale. All dimensions to be confirmed on site.  
Information contained in this drawing is the sole copyright of ORMS Designers & Architects Ltd.  
and is not to be reproduced without permission.