

# 4.0 PROPOSALS AND ASSESSMENT

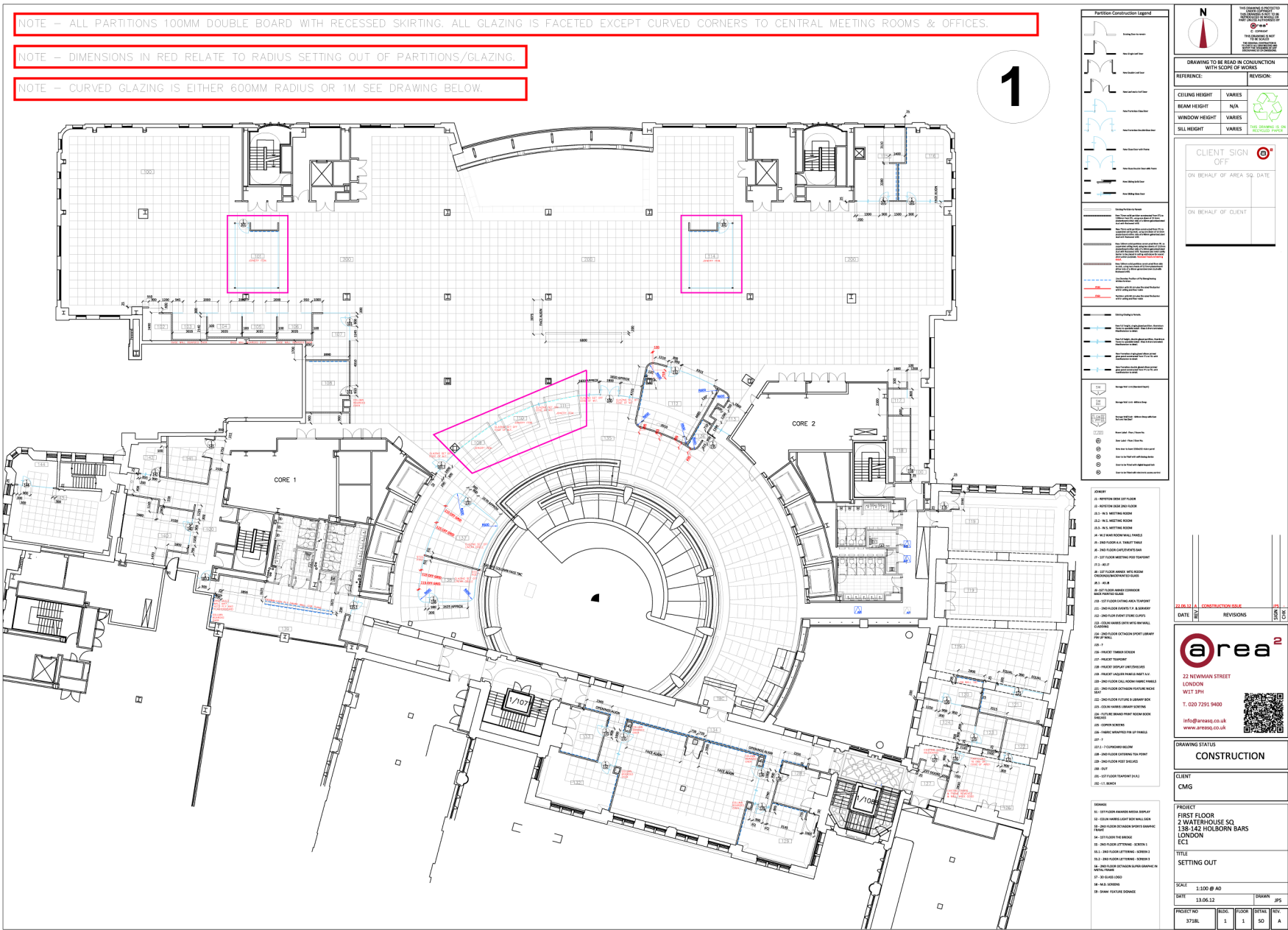
## 4.1 PROPOSALS

The works proposed for 2 Waterhouse Square are being put forward in order to fit out what is currently an unoccupied, recently modernised office space, and consist largely of the addition of new services, floor coverings and lightweight glazed, plasterboard and wooden partitions, along with some minor alterations to ceilings, in order to meet the requirements of CMGRP UK Ltd.

The proposed scheme seeks to alter the internal arrangement of three different parts of the building at 2 Waterhouse Square, as well as some lighting arrangements and flooring materials. The proposals are limited to the following three areas:

- The block to the southeast of the site, fronting onto Leather Lane, part of the former Leather Lane/Ridler’s Hotel Block of 1895-1901;
- The small block to the southwest of the site, within the remains of the Waterhouse works of 1885-8;
- The square block facing Waterhouse Square, consisting of the former Wood’s Hotel Block of 1895-6.

The proposals seek to introduce new flooring throughout the first and floor in order to improve the legibility of the office space for clients and employees. New partitions are further proposed at this level in order to facilitate a more efficient use of the floor-space. New lighting schemes will serve to enhance these physical changes in the specified areas.



**Figure 31:** Partition plan, indicating the new partitions to be added to the internal spaces at first floor level at 2 Waterhouse Square. Further works are proposed to the ceilings and floors of the building.