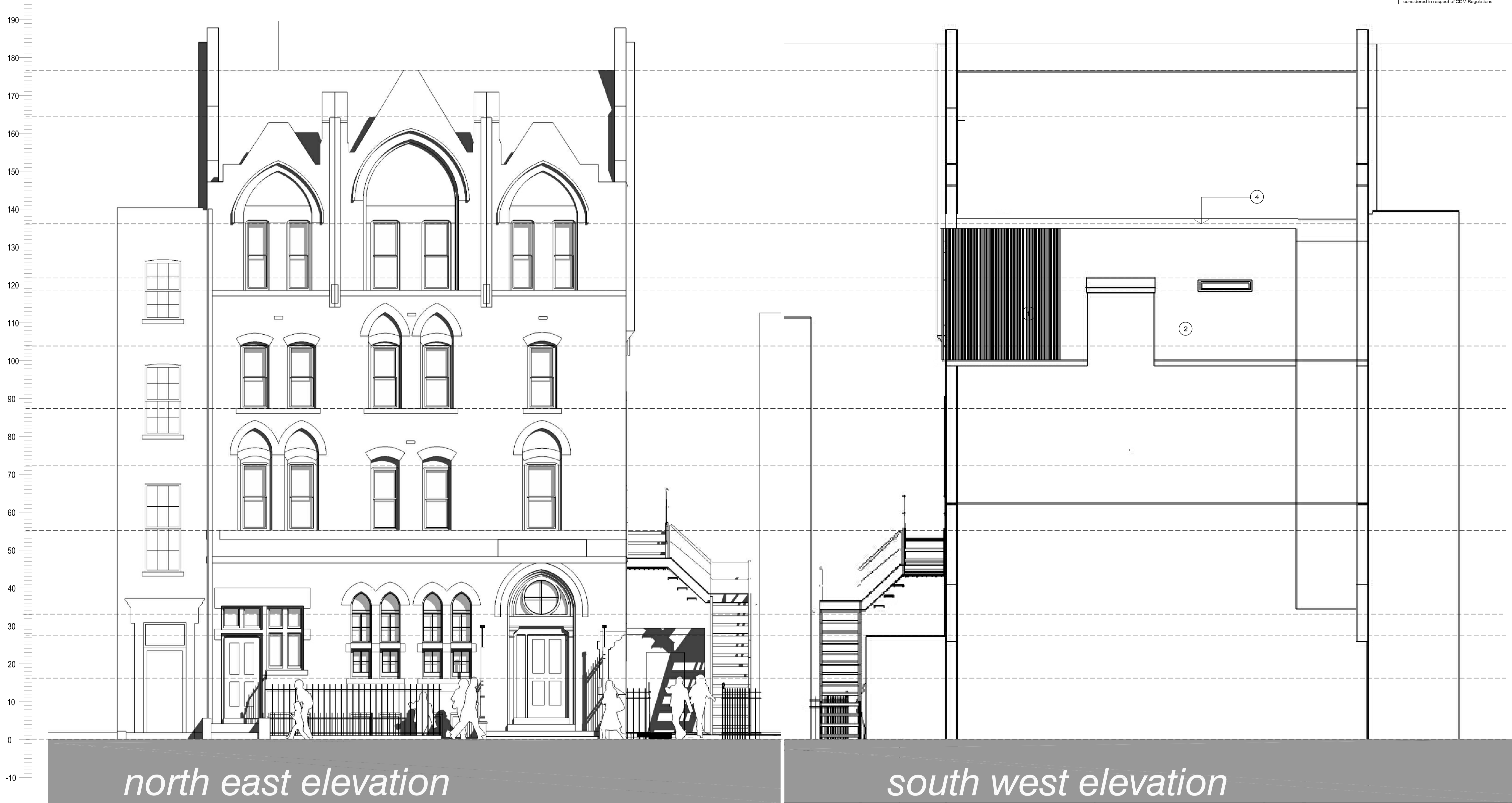


Sketch proposals are for illustrative purposes only & as such are subject to detailed site investigation including ground conditions / contaminants, drainage, design & planning/conservation negotiations. Sketch proposals may be based upon enlargements of OS sheets & visual estimations of existing site features; accuracy will therefore need to be verified by survey. Sketch proposals have not been considered in respect of CDM Regulations.



FOR PLANNING



This drawing and the building works depicted are the copyright of Staniforth Architects Ltd. and may not be reproduced or amended except by written permission. No liability will be accepted for amendments made by other persons.

MATERIALS KEY:	
①	Vertical slatted stained timber cladding.
②	Yellow stock brick
③	Powder coated aluminium bottom panel
④	Flat roof laid to falls

REV: D - Elevation labels amended.
C - Parapet height reduced.
B - Shadows removed.
A - North East Elevation Amended.

JOB: Old Gloucester Street, London

STANIFORTH architects ltd

The Warehouse
1A Stamford Street
Leicester LE1 6NL

t 0116 2853775
f 0116 2853778
e mail@stanifortharchitects.co.uk
w www.stanifortharchitects.co.uk

SCALE: 1:50 @ A1 or 1:100 @ A3
DATE: 25/11/2011

1158 P09D