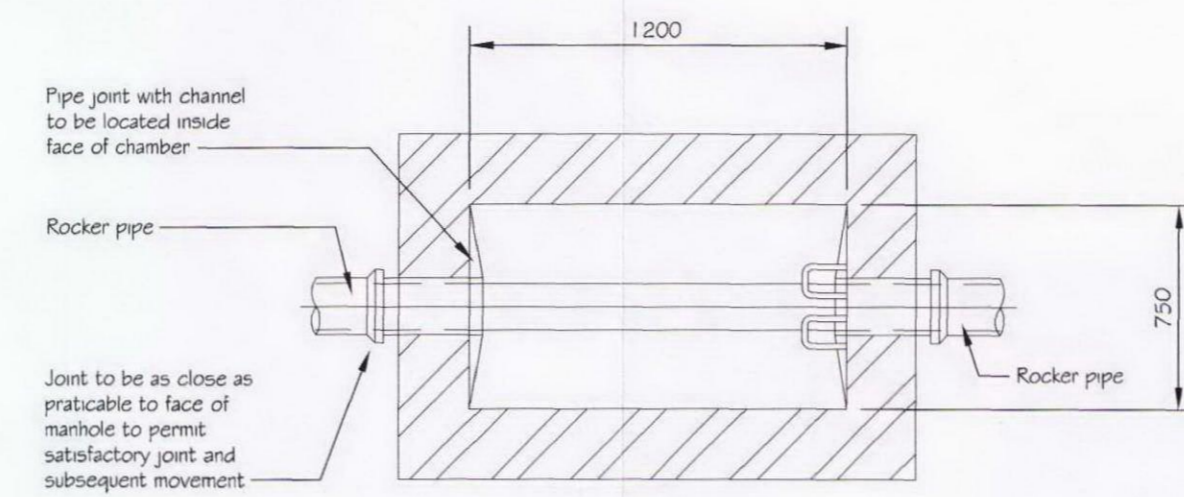


Proposed Basement Drainage Layout
Scale 1:100

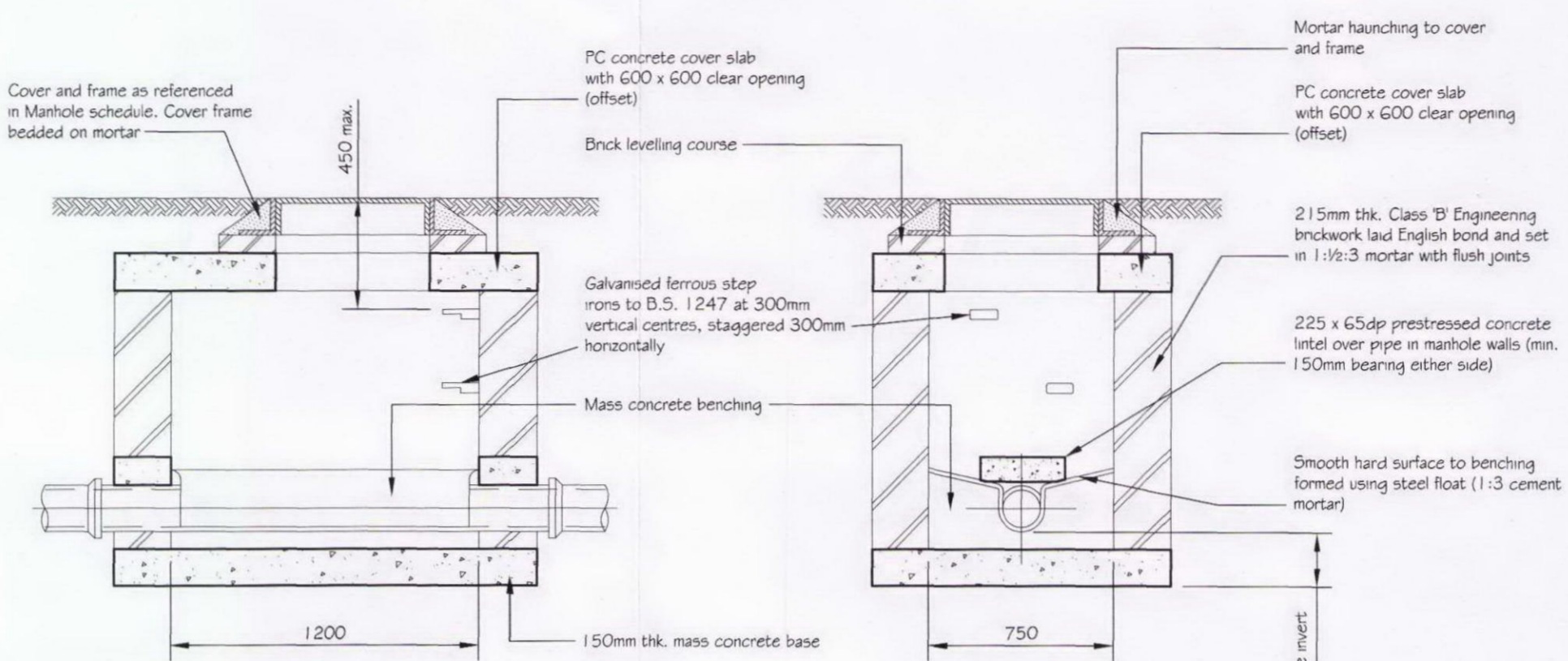
Key

- G New floor gully
- EG Existing floor gully
- S New 100 Ø SVP
- S/S New 100 Ø Stub Stack
- RWP New 100 Ø Ramwater downpipe
- MH -- New Inspection Chamber
- MH -- Existing Inspection Chamber (Manhole ref. relates to Drainage survey carried out by JPD Technical Services)
- Denotes new electrical & data services trench / access panel. Refer to CEC drawings for details

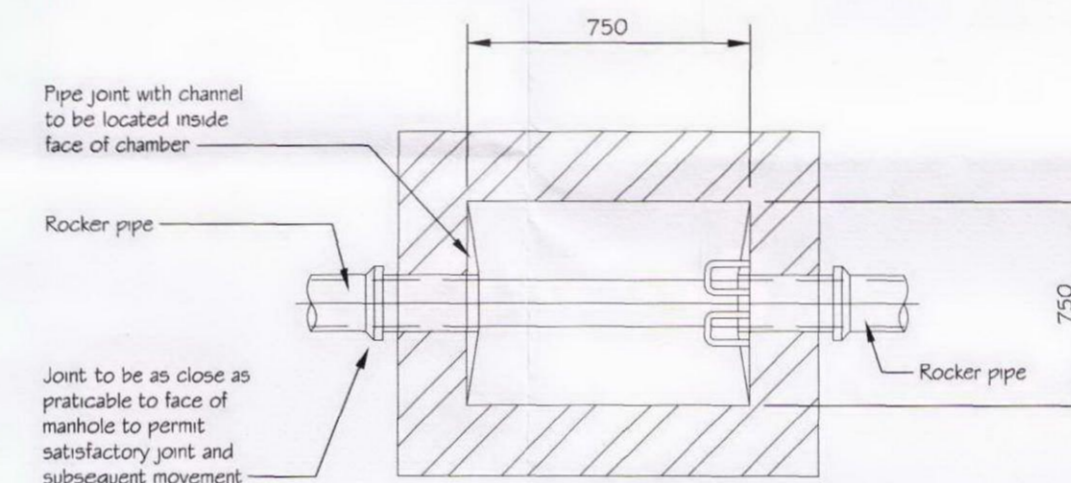
Manhole Schedule				
Manhole ref.	Existing Manhole Size (mm)	New Manhole Size (mm)	Cover Level (m)	Invert Level (m)
MH 1	Disused Manhole	-----	22.680	22.300
MH 2	1100 x 500	-----	22.320	21.760
MH 3	Disused Manhole	-----	22.630	22.170
MH 4	-----	750 x 1200	23.960	22.186 approx.
MH 5	1050 x 600	-----	22.470	21.850
MH 6	Disused Manhole	-----	23.940	22.160
MH 7	-----	750 x 1200	23.840	22.065 approx.
MH 8	1000 x 650	-----	22.250	21.820
MH 9	600 x 450	-----	22.300	21.950
MH 10	-----	750 x 1200	23.760	21.966 approx.
MH 11	-----	750 x 750	22.320 approx.	21.651 approx.
MH 12	-----	750 x 750	22.200 approx.	21.840 approx.
MH 13	-----	750 x 750	22.250 approx.	21.731 approx.



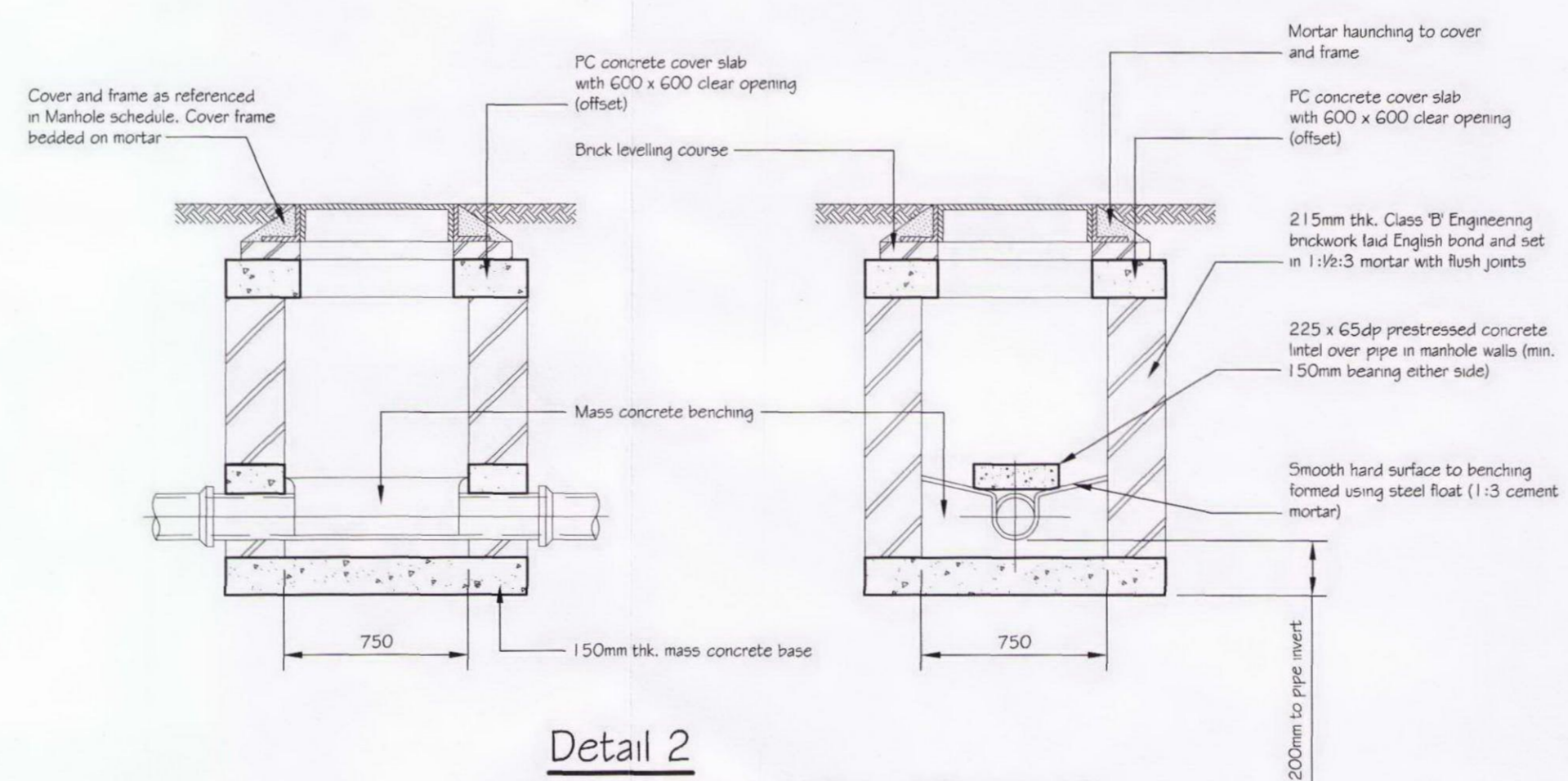
Plan on Detail 1
Scale 1:20



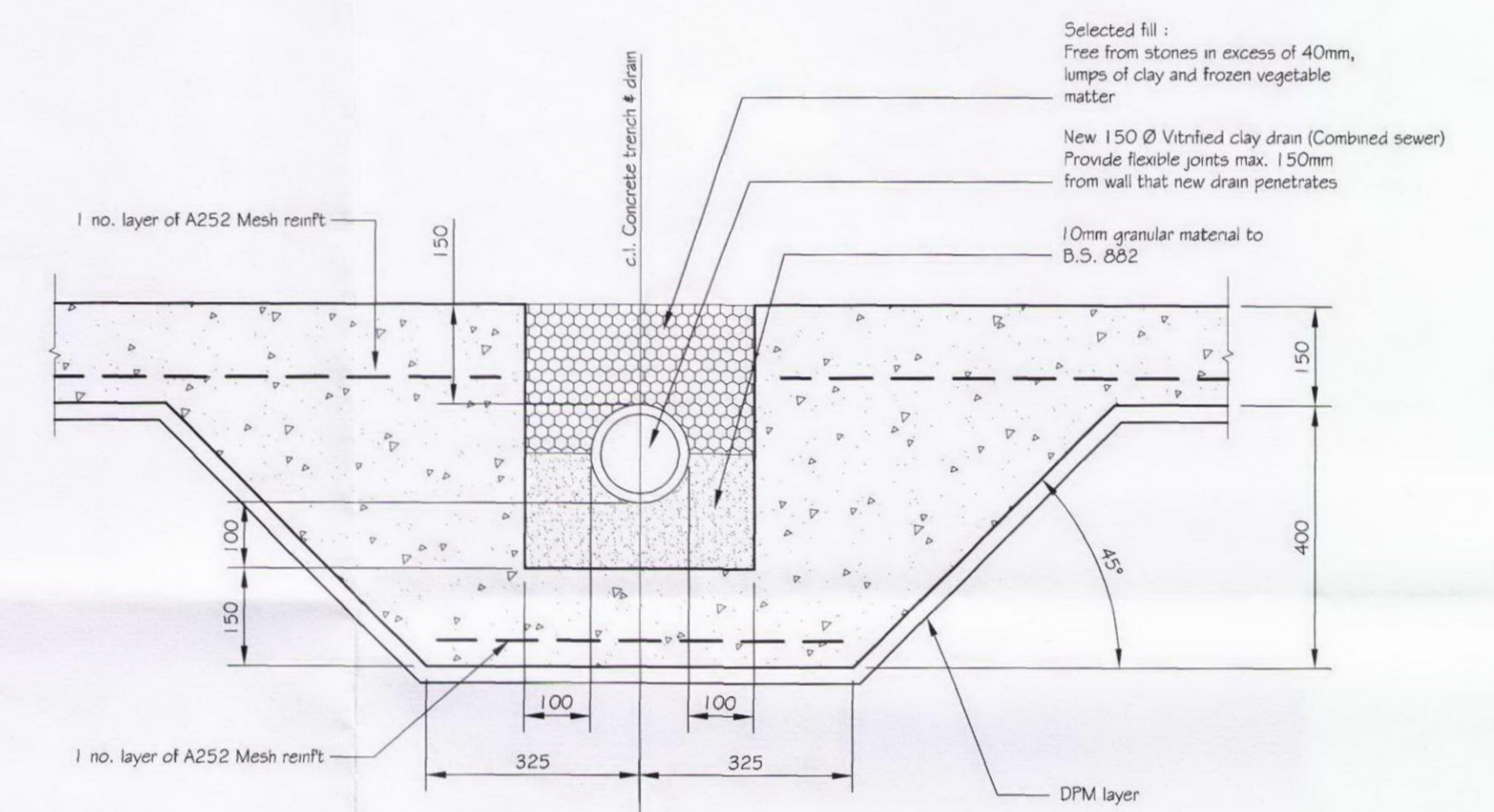
Detail 1
(Manhole no.'s 4, 7 and 10)
Scale 1:20



Plan on Detail 2
Scale 1:20



Detail 2
(Manhole no.'s 11, 12 and 13)
Scale 1:20



Section 4 - 4
(Class 'B' Bedding / Trench Detail)
Scale 1:10

NOTES

1. Manhole no.'s 5, 8 and 9 to be removed. New 150mm Ø combined drain runs to fall at 1:80 to new manhole no.'s 11, 12 and 13.
2. Reconnect existing gully to new 150mm Ø combined drain run.

Rev	Date	Description
E	19-3-12	Revised as clouded
D	27-2-12	Revised as clouded
C	8-2-12	Construction Issue and revised as clouded
B	27-7-11	Additional info. added and issued for Tender
A	4-7-11	Additional info. added and issued for Tender
-	7-5-11	Tender Issue

Richard Watkins & Associates
Consulting Civil & Structural Engineers

telephone : 020 7593 0088
e-mail : engineers@rwalondon.co.uk

Construction Issue

1-3 Bedford Place

Proposed Drainage Layout & Details
Sheet 1 of 2

3188 08 E