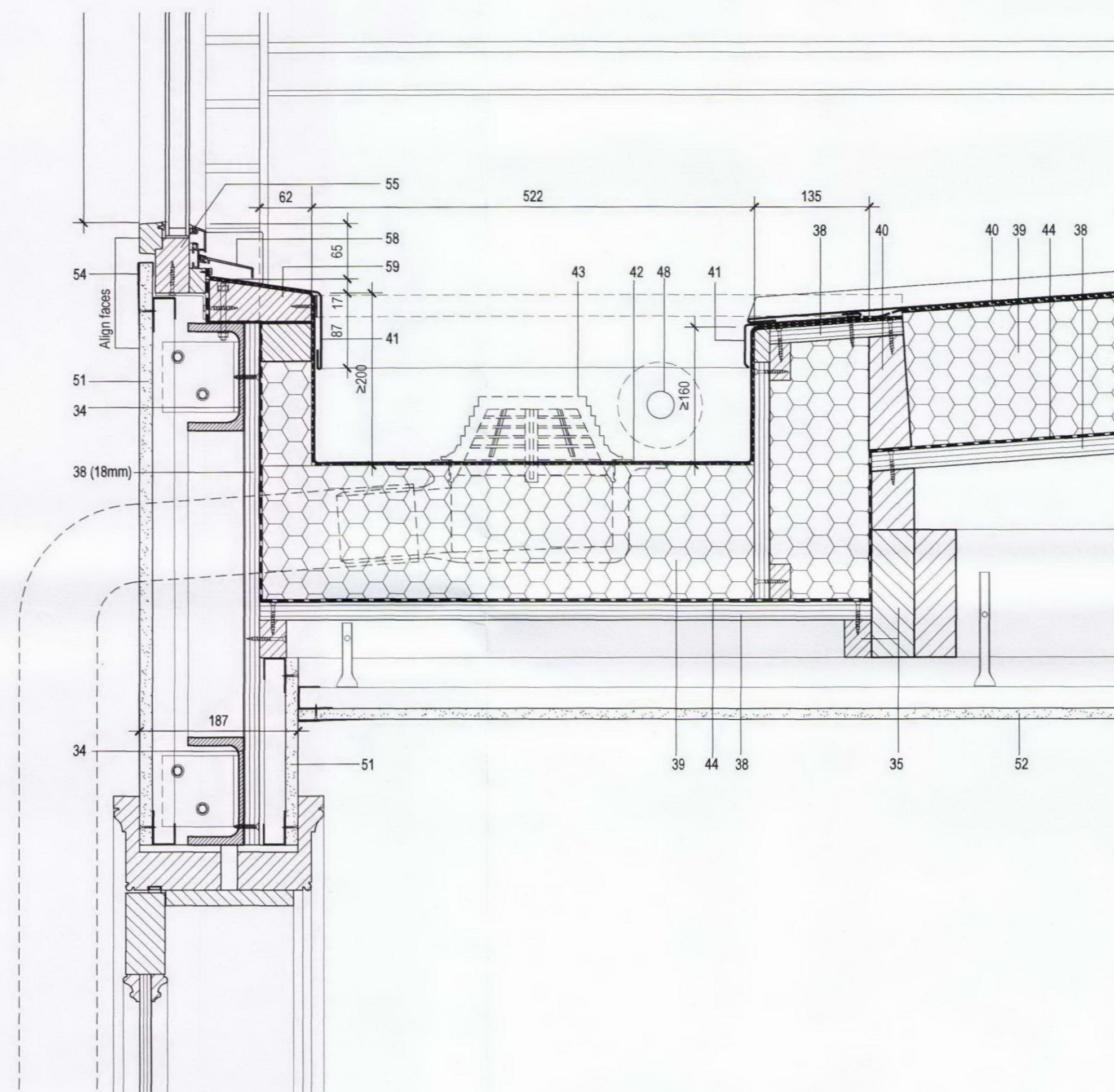
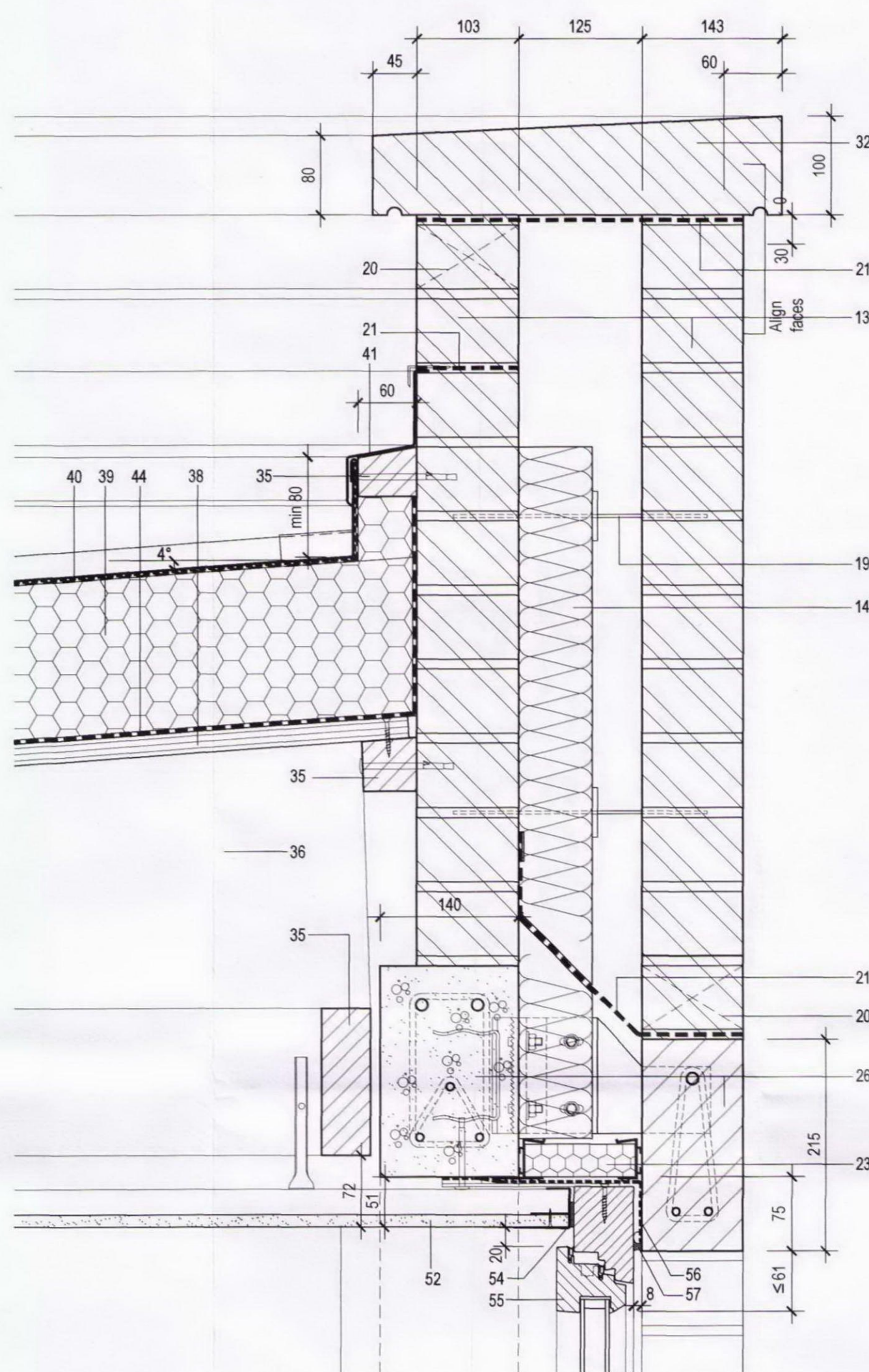


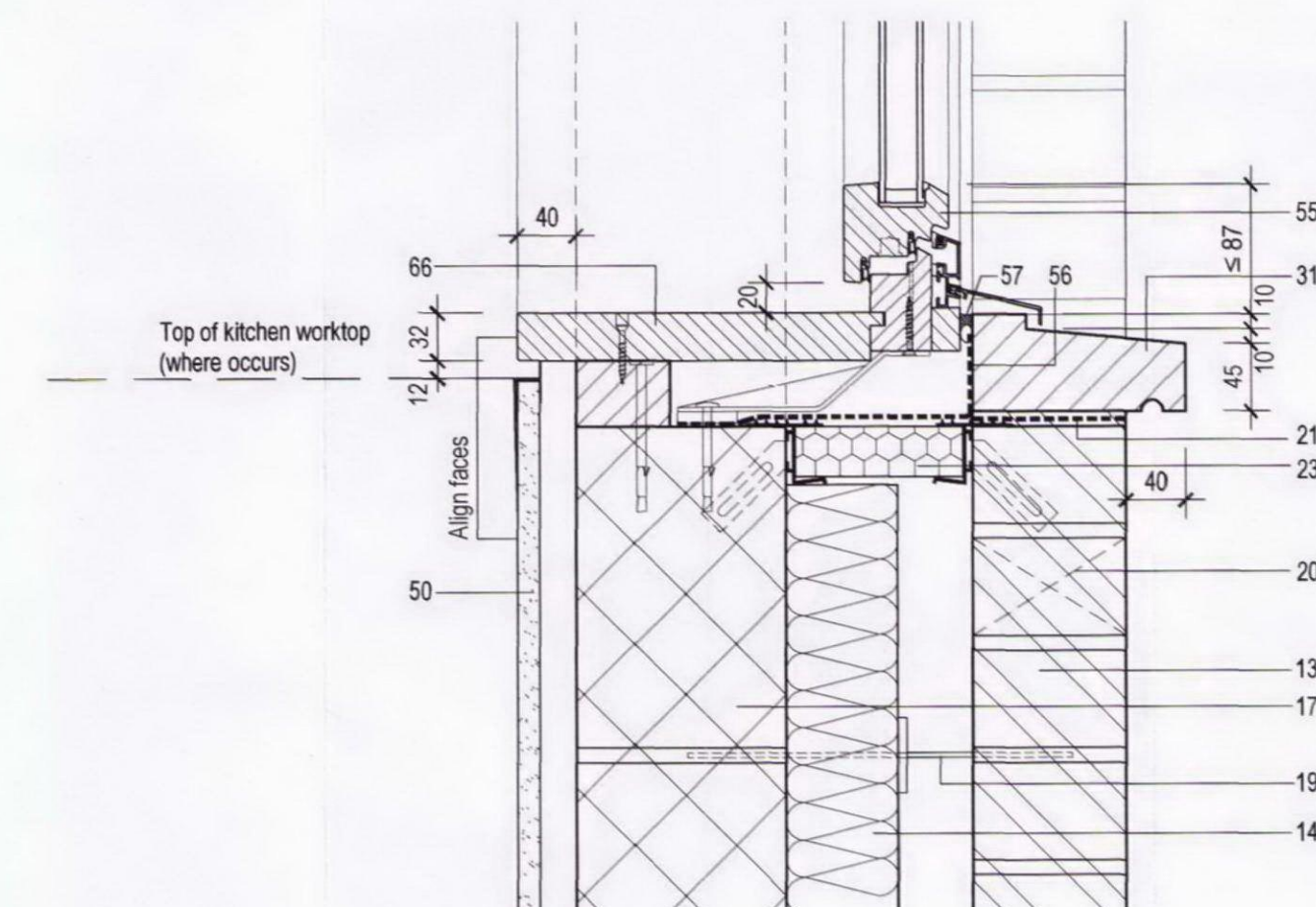
1 Head detail
CA_100 Applies window above Ground FI kitchen door



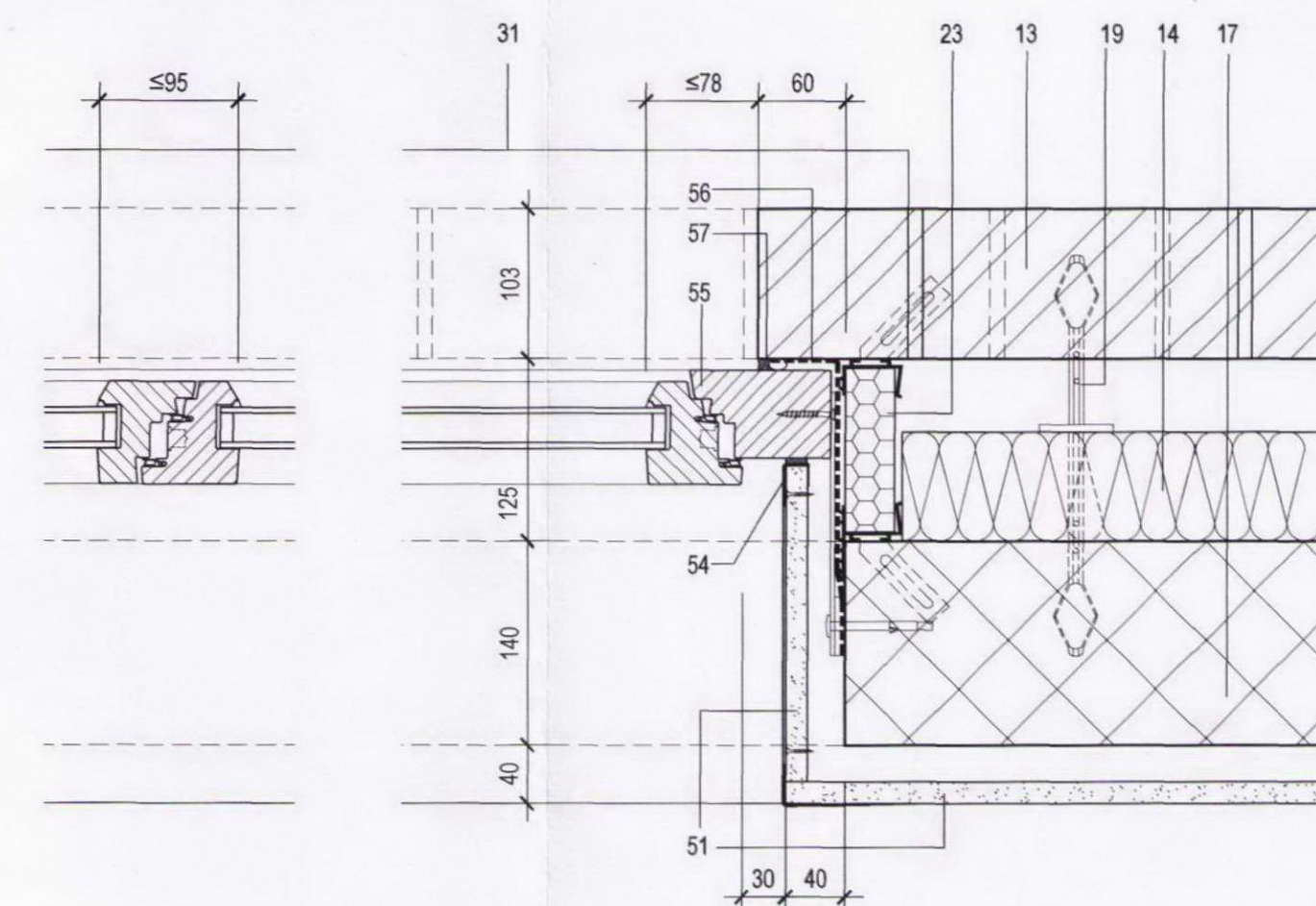
2 Window Cill Detail and Valley Gutter
CA_100 Applies new roof above ground floor kitchen



3 Window Head Detail/Roof Parapet Detail
CA_100 Applies rear addition



4 Window Cill Detail
CA_100 Applies rear addition windows



5 Window Jamb Detail
CA_100 Applies rear addition windows

Refer window schedule for new/refurbished windows.

Refer door schedule for new/refurbished doors, linings, architraves and associated ironmongery.

Refer separate Floor Finishes plans and Ceiling Finishes plans.

Refer suppliers drawings for kitchen layouts and equipment schedule.

Refer to demolition plans for existing structures to be removed.

- In situ conc. footings. Refer structural eng. dwgs.
- In situ concrete external ground slab on DPM and sand blinding. Refer structural eng. dwgs.
- In situ concrete retaining wall. Refer structural eng. dwgs.
- Proprietary sheet tanking membrane and drainage mat. Refer structural eng. dwgs.
- Pea shingle. Refer structural eng. dwgs.
- In situ concrete roof slab. with formed reinforced upstands around roof window and front edges. Refer structural eng. dwgs.
- DPM on sand blinding. Spec. J40.
- In situ concrete ground slab. Refer structural eng. dwgs.
- Rigid insulation board. Spec. P10.
- 15mm bitumen impregnated compressible filler board. Spec. P10
- Solid facing brickwork party wall.
- Solid engineering brickwork dwarf wall. Spec. F10.
- Facing brickwork. Pointing tbc. Spec. F10.
- 125mm cavity and rigid board cavity insulation restrained with proprietary clips mounted on wall ties. Spec. P11.
- Cementitious cavity fill below ground level. Spec. F10.
- Bevelled edge brick course. Spec. F10.
- 140mm dense blockwork. Spec. F10.
- Brick on edge coping to match existing party wall. Spec. F10.
- Stainless steel cavity wall ties. Spec. F10.
- Open perpend provides weep/ventilation slot. Spec. F10.
- Proprietary DPC. Spec. F10.
- Stainless steel starter wall tie with debonded sleeve. Spec. F30.
- Proprietary cavity closer. Spec. F30.
- Kitchen/ Bathroom extractor grille. Spec. F10.
- Infill brickwork reclaimed from site. Spec. F10
- Composite lintol comprising precast conc. lintol to inner leaf and reconstituted stone to outer leaf connected with stainless steel plates. Refer structural eng. dwgs and spec. F31.
- Reconstituted stone lintol with stainless steel bracket fixing to in situ concrete slab. Refer structural eng. dwgs and spec. F31.
- Precast concrete lintol. Refer structural eng. dwgs.
- Stainless steel angle lintol and pistol brick. Refer structural eng. dwgs and spec. F30.
- Stainless steel tie with de-bonding sleeve. Spec. F30
- Reconstituted stone cill. Built in at jambs. Spec. F31.
- Reconstituted stone coping. Secured with stainless steel dowel/angle bracket at joints. Spec. F31.
- Spare.
- Framing formed from galv MS 125/65mm parallel flange channel. Spec. G12.
- Treated timber joists/framing. Refer structural eng. dwgs and spec. G20.
- Treated timber firings. Spec. G20.
- 90/90/6mm stainless steel angle continuous over door opening width. Resin anchor fixing to IS conc. slab. Spec. F30
- 22mm WBP plywood decking. Spec. G20.
- Rigid cellular glass roof insulation board as recommended by zinc supplier. Spec. H74.
- Zinc sheet standing seam roof finish. Installed in accordance with manufacturers recommended details on PE membrane and bituminous membrane. Spec. H74.
- Zinc flashing. Secured with zinc clips. Spec. H74.
- Valley gutter formed in single ply glass fibre reinforced plastisol membrane. Fully adhered to insulation. Spec. J42.
- Harmer insulated rainwater outlet. Spec. J42.
- Vapour check membrane. Spec. J40
- Polymer modified asphalt roof finish. 20mm 2-coat roof surfaces. 13mm 2-coat upstands. Spec. J21.

- Polymer modified asphalt roof finish. 20mm 2-coat roof surfaces. 13mm 2-coat upstands. Spec. J21.
- Lead flashing. Spec. H71.
- Harmer metal roof outlet (below paving). Asphalt dressed into roof outlet. Spec. J21.
- Parapet gutter overflow. Stainless steel. Fully bonded to sleeve formed in gutter lining. Spec. J42
- Trowel applied bituminous internal lining to planter. Spec. J30.
- Dryinglin comprising thermal laminate gypsum board on galv MS channels. Stainless steel stop beads at window frame abutments. Spec. K10.
- 15mm gypsum wallboard on galv. MS framing. Spec. K10.
- 12.5mm plasterboard on galv. MS framing fixed to ceiling joists. Spec. K10.
- Extruded aluminium lighting channel. TLS lamp. Refer electrical eng. dwgs.
- Extruded aluminium plasterboard stop bead. Spec. K10
- New timber windowdoor. Primed and coated in factory. Gas filled double glazing. Fixed to masonry inner leaf with stainless steel straps. Spec. L10.
- EPDM DPC. Spec. L10.
- Poly sulphide sealant on backing rod. Colour tbc. Spec. L10.
- Extruded aluminium cover cill. Spec. L10.
- Hardwood cill, countersunk bolted to steel framing. Spec. L10
- 'Walk-on' rooftop. Flush with paving. Gas filled double glazing comprising 20mm minimum toughened outer pane and 9mm minimum laminated inner pane. Silicon bedding. Spec. L10.
- 90/50/3mm Galv MS RHS perimeter frame. Mitred and welded corners. Mechanically fixed to concrete upstand with stainless steel angle lugs. Spec. L10.
- 2mm thick stainless steel apron. Mitred and welded corners. C/sunk s/sap fixed to RHS with waterproof compressible strip. Spec. L10.
- 170/65/5mm stainless steel angle. Continuous over door width. Fixed with resin anchors to blockwork. Spec. L10
- Polymer modified cementitious screed. Spec. M10.
- Engineered hardwood floor. Prefinished (finishing coat on site). Laid on levelling plywood and vapour check membrane as recommended by flooring supplier. Spec. K21.
- 32mm MDF fill. C/sunk screwed, plugged and pelleted to treated softwood ground. Spec. P20.
- Planter formed in precast reconstituted stone blocks. Spec. Q10.
- Soil and plants - refer landscape architects dwgs.
- Diam. 20mm stainless steel drainage pipe. Spec. Q10.
- Adjustable PVC paving support. Spec. Q10.
- Recessed LED step light. Refer electrical eng. dwgs.
- Reconstituted stone paving. Spec. Q25.
- Bound gravel. Refer landscape architects dwgs.
- Engineered hardwood floor. Prefinished (finishing coat on site). Laid on acoustic mat and 22mm plywood screw fixed to joists. Spec. K11, K21
- 280 litre Rainwater storage tank. Refer mechanical eng. dwgs.
- Trapped gully. Stainless steel grating. Refer civil eng. dwgs.
- Galv. MS RHS stair stringer. Refer structural eng. dwgs.
- Fixing plate formed from stainless steel flats. Mechanical fixing to cast in channel in IS conc. upstand. Refer structural eng. dwgs.
- Reconstituted stone stair treads. secured to RHS stringer with concealed stainless steel dowels. Formed with circular pockets for balustrade. Spec. Q10.
- Spare.
- Balustrade: Diam. 15mm MS posts and stays let into pockets in treads and secured with lead. 40/17mm concave top handrail welded to top of posts. All MS galvanised and painted. Spec. Z11 and M60.
- Access cover to underground rainwater storage tank. Refer mechanical eng. dwgs.
- 100/ 100/ 6mm galv. MS angle. Continuous around 3 sides roof window opening. Corners mitred, welded and ground smooth. Fixed with resin anchors to IS conc. upstand. Spec. L10
- 100/ 100/ 8mm galv. MS angle. Continuous over width roof window opening. Fixed with resin anchors to existing brickwork. Spec. L10
- Recessed extruded aluminium lighting channel. Continuous over width of roof window. Supplied with end caps. LED strip lamp. Refer electrical eng. dwgs
- Cast-in stainless steel anti slip strip. Spec. Q10
- Continuous neoprene strip. Spec. Q10
- Reconstituted stone capping - dims to match existing stone capping. Spec. F31.

NOTE:
UNLESS INDICATED, THIS DRAWING IS FOR INFORMATION ONLY.
DO NOT SCALE. USE FIGURED DIMENSIONS ONLY.
ALL DIMENSIONS TO BE CHECKED ON SITE.
IF IN DOUBT ASK

STAGE E/F

Drawing original size A1 0 5 25 50 75

REVISION:			NOTES:		
REV	DATE	NOTE	REV	DATE	NOTE

CLIENT:



THE BEDFORD ESTATES

ANDREW LETT ARCHITECTS
120 Marylebone Lane London W1U 2QG
T. +44(0)20 7486 6464 F. +44(0)20 7486 6467
E. email@andrewlettarchitects.com

DRAWN:
AP

PROJECT NAME:
1-3 BEDFORD PLACE

DRAWING TITLE:
REAR ADDITION - DETAILS SHEET 1

SCALE: 1:5 @ A1	DATE: 04/2011
DRAWING: 10106_CA_100	REV: A