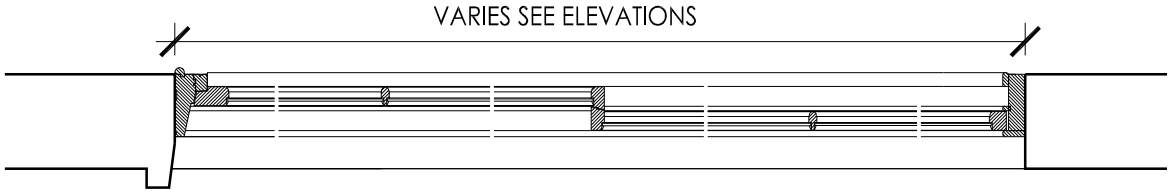
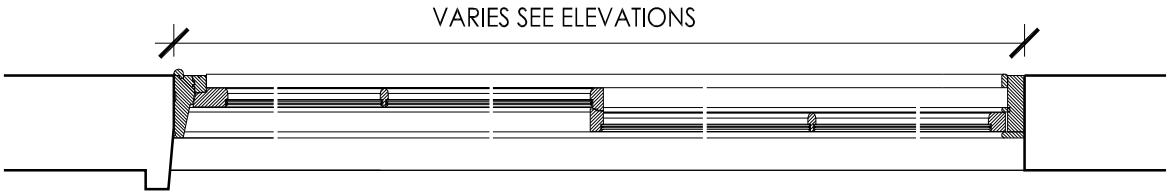


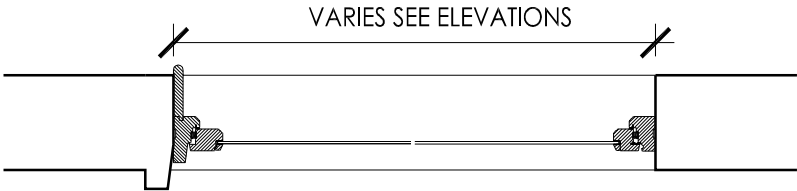
EXISTING SASH WINDOW
SINGLE GLAZED TIMBER SASH WINDOW



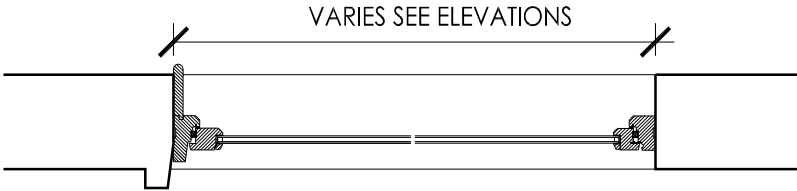
PROPOSED SASH WINDOW
DOUBLE GLAZED TIMBER SASH WINDOW



EXISTING CASEMENT WINDOW
SINGLE GLAZED TIMBER CASEMENT WINDOW



PROPOSED CASEMENT WINDOW
DOUBLE GLAZED TIMBER CASEMENT WINDOW



DO NOT SCALE FOR CONSTRUCTION



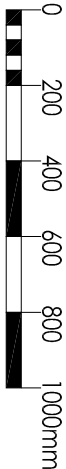
HOLMURRY HOUSE
DOCKING BUSINESS PARK
SURREY RA1 1UJ
T 01882 862700
F 01882 862701
admin@bpg.co.uk
www.bpg.co.uk

PROJECT
49 A & B GOUGH STREET,
LONDON, WC1X
WINDOW REPLACEMENT
CLIENT
ORIGIN HOUSING

DATE	3469	DATE	JULY 2012
DRAWN	SD	CHECKED	RM
SCALE	1:20@A4	FOR	PLANNING
TITLE			

TYPICAL WINDOW
SECTIONS

DRAWING NO.
PL_15_04



REV
*