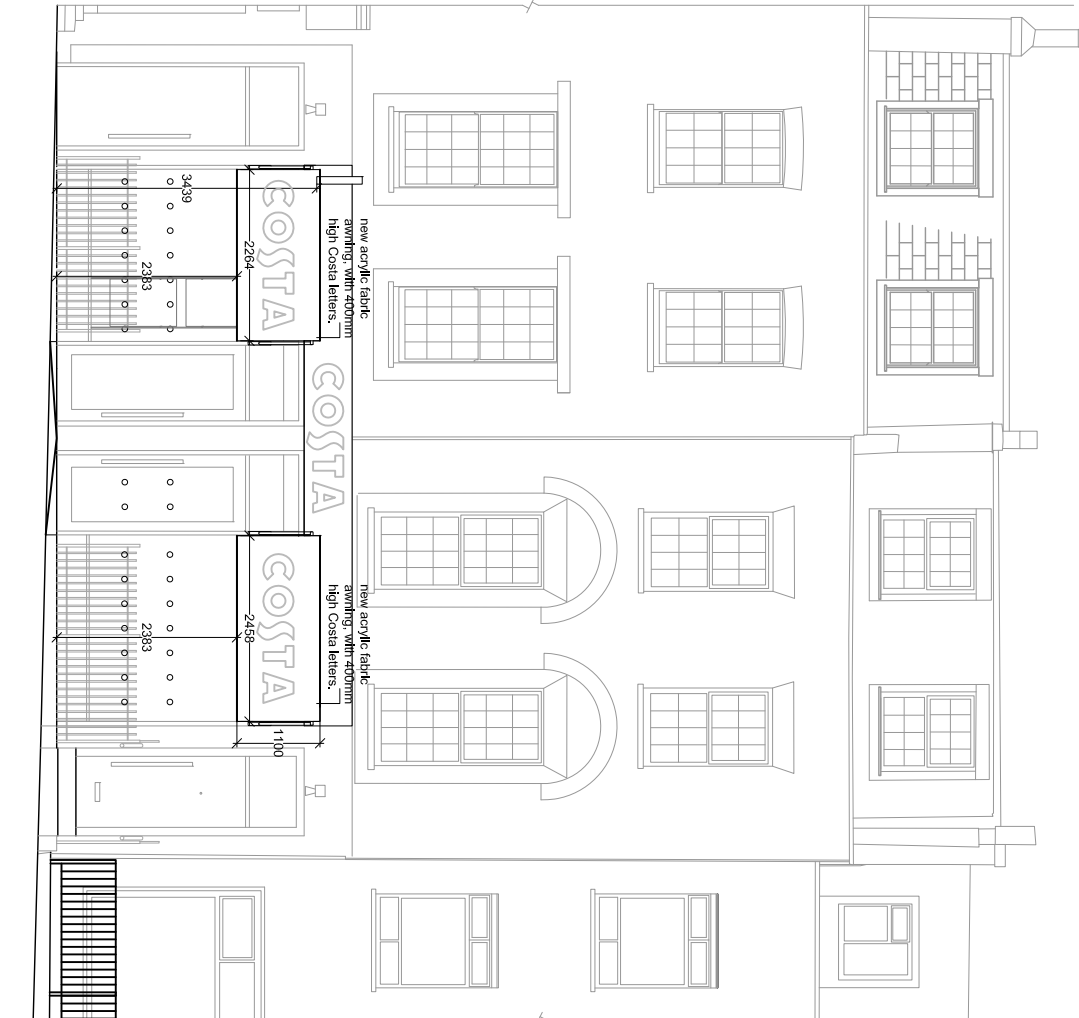
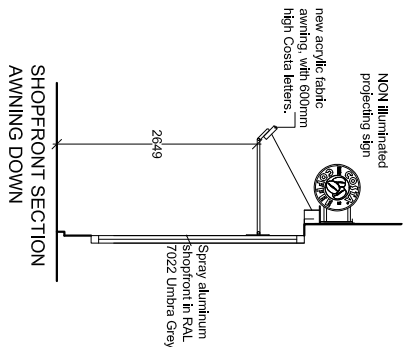


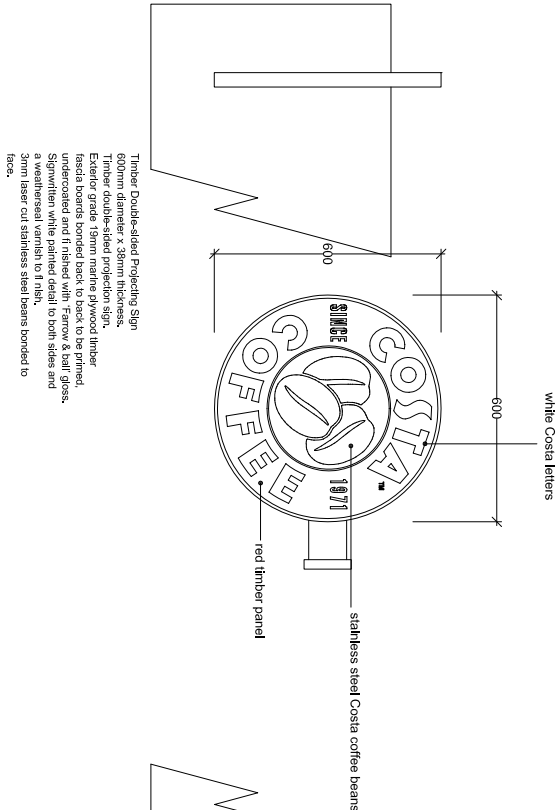
FRONT ELEVATION AWNINGS CLOSED SCALE 1:100



FRONT ELEVATION AWNINGS OPEN SCALE 1:100

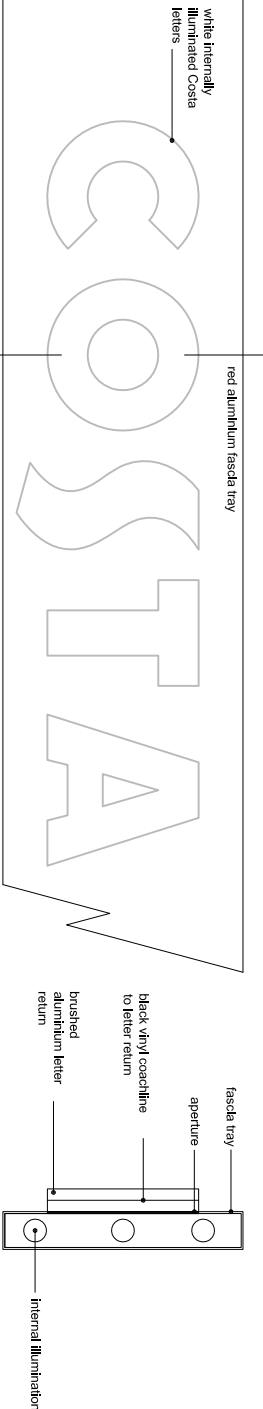


SHOPFRONT SECTION
AWNING DOWN



Timber Double-sided Projecting Sign
600mm diameter x 38mm thickness.
Timber double-sided projection sign.
Exterior grade 18mm marine plywood timber
faced boards sanded ready to back to be primed
and painted with 2 coats of exterior grade white
signpainter white painted detail to both sides and
a weatherseal varnish to finish.
3mm laser cut stainless steel beams bonded to
back.

FASCA BOARD - SCALE 1:20
3mm Aluminium tray fascia powder coated 'COSTA RED' with a 60mm return.
Built-up brushed stainless steel rim & return 'COSTA' letters.
2000mm - 600mm in 50mm increments 'T' letter height available, depending on fascia.
All letter sizes to have a 10mm rim with a 60mm return.
Black vinyl coach line applied to centre of all letter returns.
Letters cut out of ray fascia background with letters fixed to aperture.
Internal HPF fluorescent illumination.
Inside aluminium tray finished white.
Opal perspex letter faces to illuminate



SECTION TROUGH FASCA & LETTERING - SCALE 1:20

SEA DESIGN GROUP

COSTA

Client
Project
257-259 Grays Inn Road
London

Drawing Title
External
Elevations

Scale 1:100/20 @ A3 Date 15.05.12

Dwg No 211060/03 Rev B

Dwg By SA Check JS

Revisions By
A - Shopfront colour altered
B - Projecting roundel replaced with non-illuminated version

SEA Office
144 Old Kent Road, London SE16 4LJ
Tel: 020 7463 6444
Fax: 020 7463 6444
Email: sea.uk@seadesigngroup.com
Website: www.seadesigngroup.com
SEA Office
257-259 Grays Inn Road, London N1 6DF
Tel: 020 7463 6444
Fax: 020 7463 6444
Email: sea.uk@seadesigngroup.com
Website: www.seadesigngroup.com