

EXISTING SECTION AA

2 Antrim Grove

3100

Lift overrun to be demolished

Lift shaft

Aluminium framed
existing patent glazing

Existing canopy

Lift overrun to be demolished

Aluminium framed patent glazing to stairwell with balustrade behind

Concrete banding

Brickwork

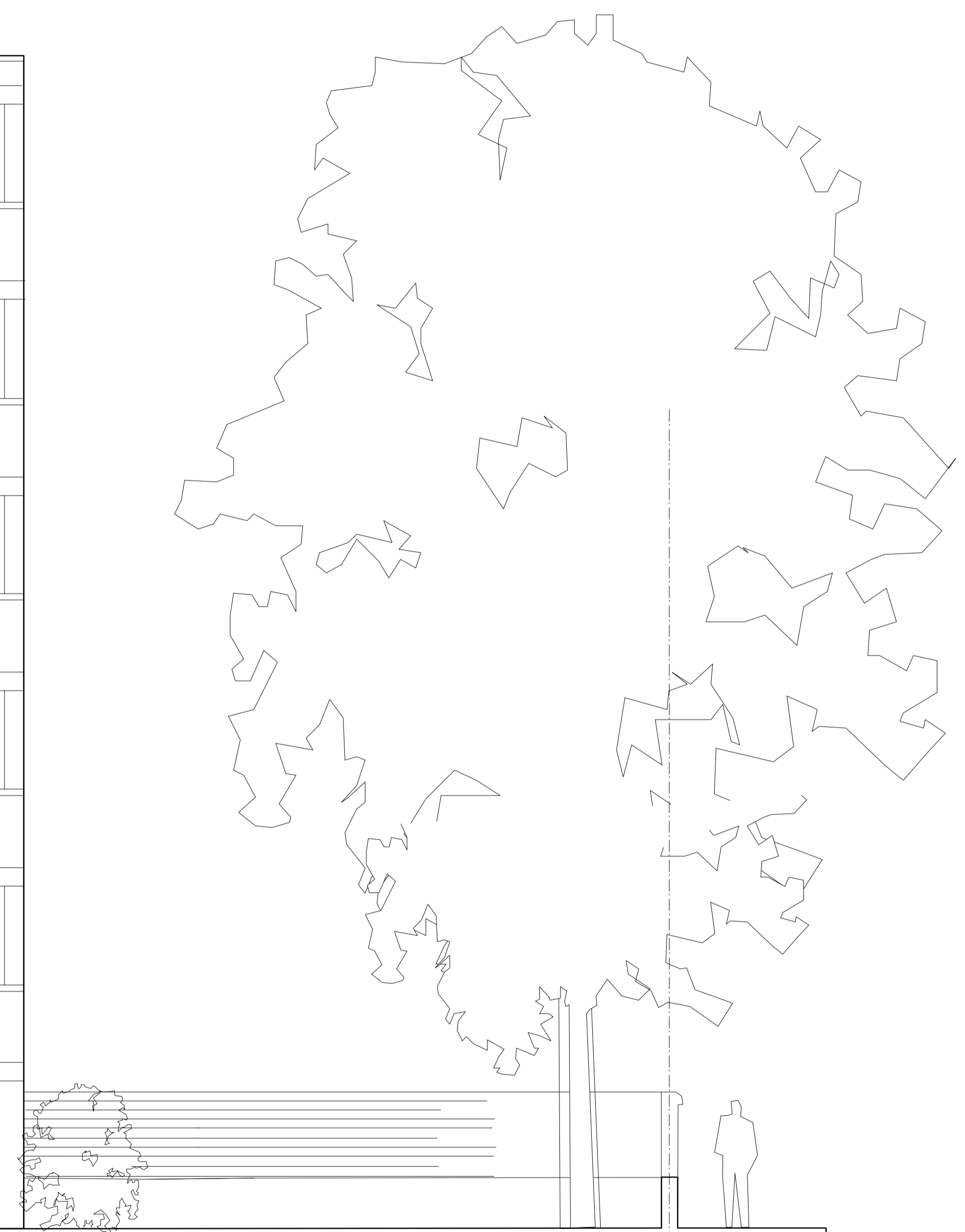
Existing canopy

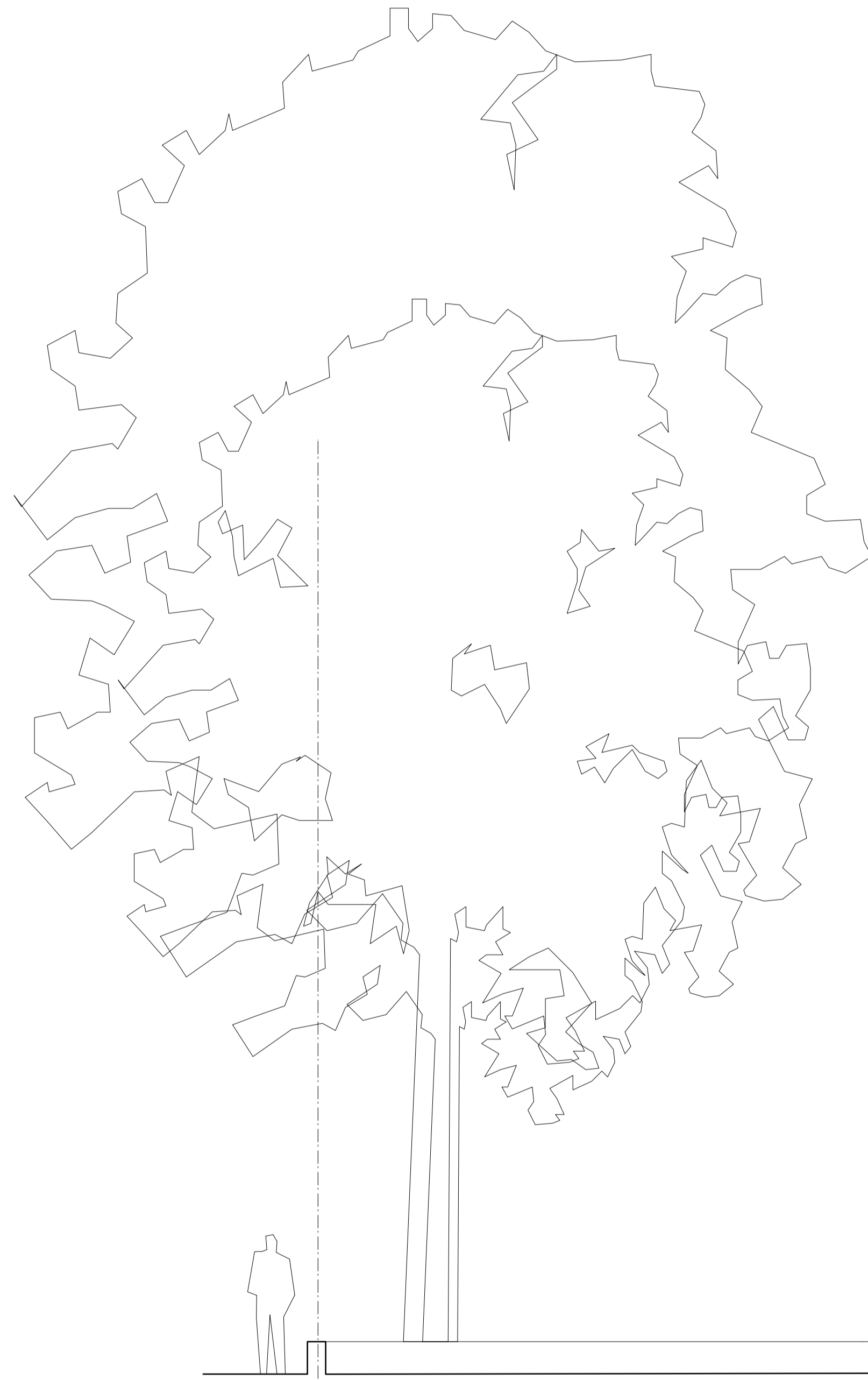
Metal gates to car parking

Entrance door and letter boxes

EXISTING FRONT ELEVATION (South East)

2 Antrim Grove





EXISTING REAR ELEVATION (North West)

2 Antrim Grove







Lift overrun to be demolished

Aluminium framed windows

Concrete banding

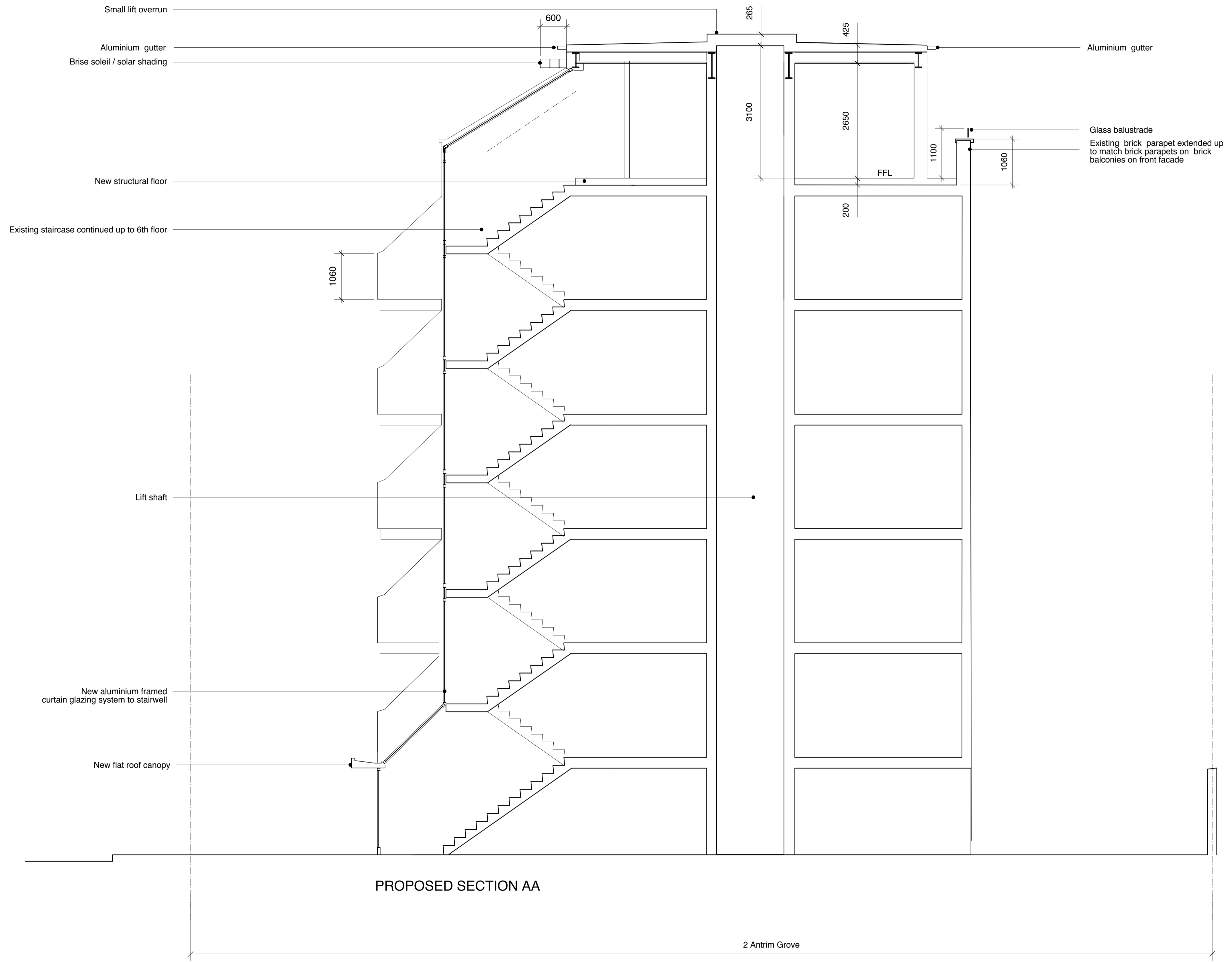
Brickwork

Existing Canopy

Metal gate / Access to parking ground floor

EXISTING SIDE ELEVATION (South West)

2 Antrim Grove

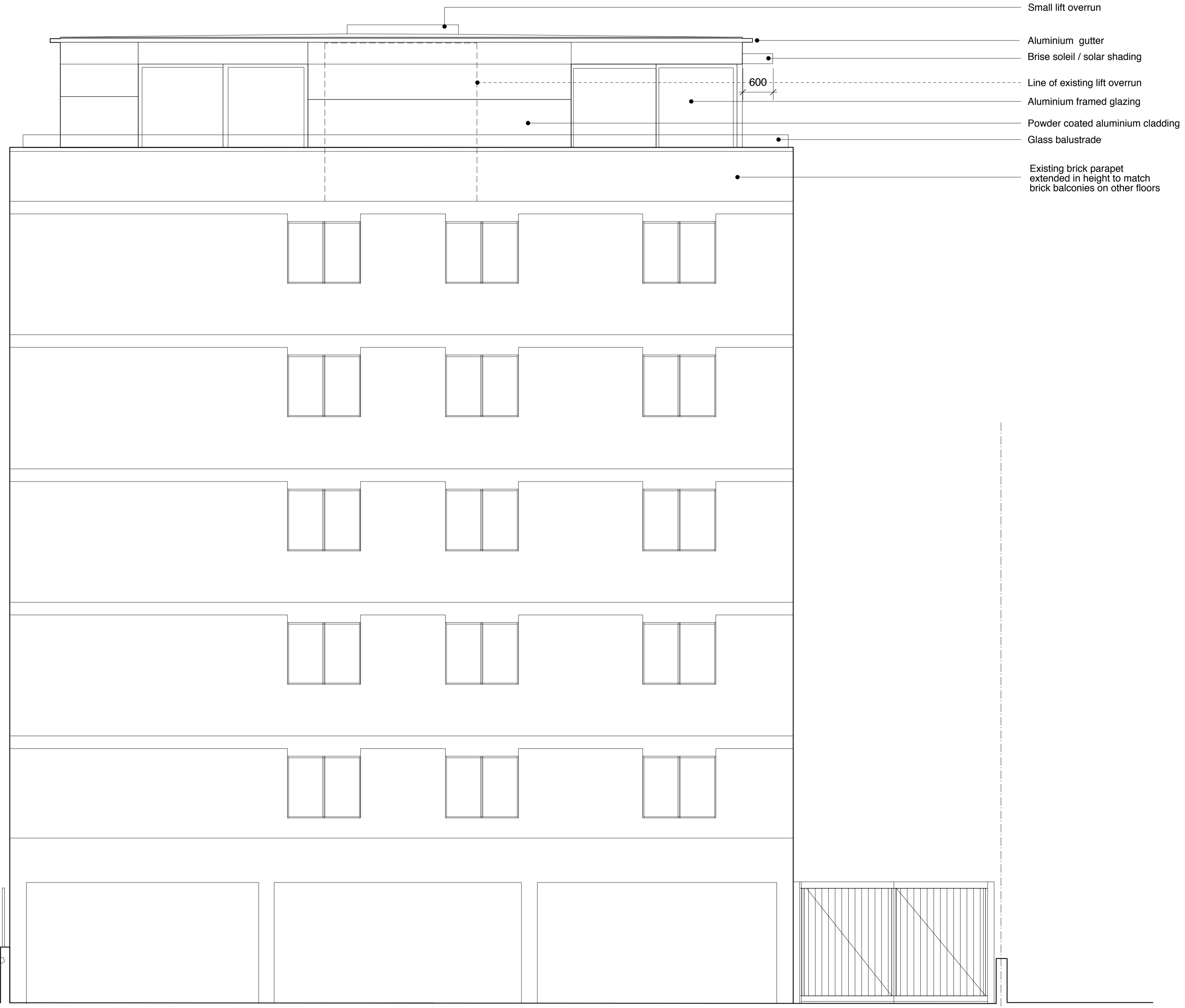
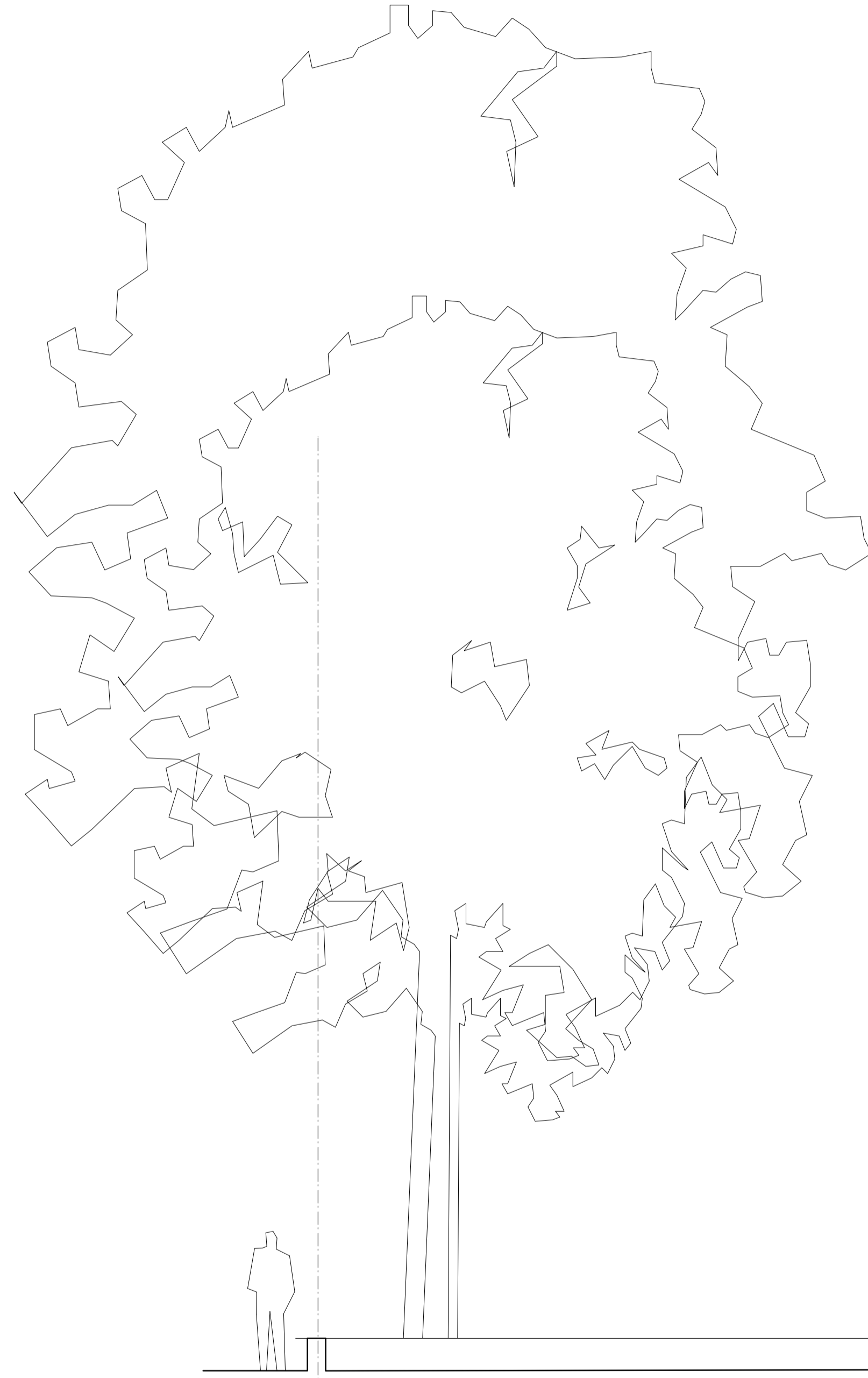




PROPOSED FRONT ELEVATION (South East)

2 Antrim Grove





PROPOSED REAR ELEVATION (North West)

2 Antrim Grove



rev: a	date: 7/12	notes: Revisions for planning resubmission	dwg title: Proposed Rear Elevation (North West)
project title: 2 Antrim Grove, London NW3 4XR	paper size: A1	file: 103 antrim grove elevations 1.50.vwx	scale: 1:50
	date: 02/12	dwg nos: 103/P/207a	



- Small lift overrun
- Aluminium gutter
- Powder coated aluminium cladding
- Aluminium framed windows with aluminium louvred panel below colour to match with window frames
- Line of existing lift overrun
- Glass balustrade
- Existing brick parapet extended in height to match brick balconies on other floors

PROPOSED SIDE ELEVATION (North East)

2 Antrim Grove

