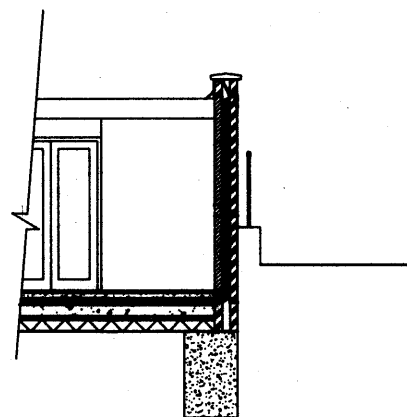
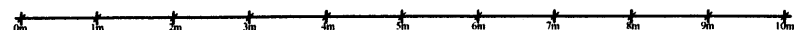
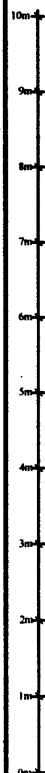


part section B-B



part section A-A



REVISIONS	
A	Amendments from client

**RECEIVED**  
27 JUL 2012

<small>project</small> Proposed rear extension to basement and conversion of basement and part ground floor into self-contained flat	
<small>site</small> 140 Gloucester Avenue, London NW1	
<small>date</small> May 2012	<small>scale</small> 1:100
<b>JOHN PERRIN &amp; CO</b> BUILDING SURVEYORS <small>885 Green Lanes, Winchmore Hill, London N21 2QS          Tel: 0208 364 0334 Fax: 0208 292 0395          © John Perrin &amp; Co 2012</small>	
<small>drawing number</small> 2202/5A	