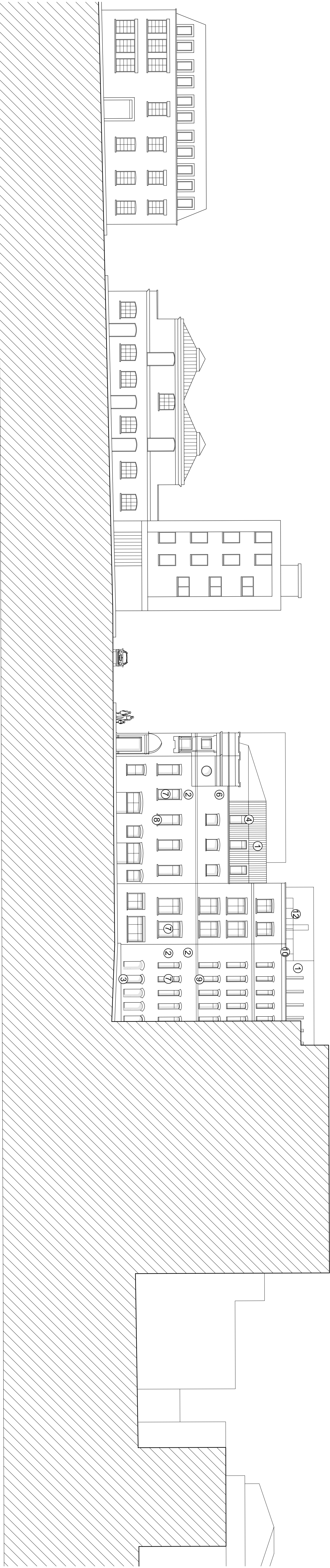


Wicklow Street

Britannia Street

East Elevation



40-44 Wicklow Street

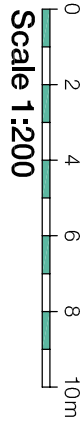
48-52 Wicklow Street

Charities and Voluntary
Organisations Head Office

Britannia Street

Royal National Throat Nose and Ear Hospital

West Elevation



- ① Zinc composite panel
- ② London Yellow Stock Brick
- ③ Slate grey wearing course brickwork

- ④ Metal framed window unit
- ⑤ RAL 9007 'Gun Metal' Grey Anodised Aluminium Louvre Panel
- ⑥ Recycled London Yellow Stock Brick to match existing

- ⑦ Double Glazed Timber framed window unit
- ⑧ Red Stock brick
- ⑨ Slate grey stretcher course brickwork
- ⑩ Stone coping at parapet level
- ⑪ Grey Stock brick
- ⑫ Glass Balustrade

Proposed East and West Elevation

Other Comments Incorporated		01/09/12 JSW	
B. Other Comments Incorporated		19/07/12 JSW	
A. Planning Application		17/06/12 JSW	
Rev. Des.		By Date Ch.	
Contractor must refer to all drawings at all times concerning any work or design changes. If any changes are made, the architect must be informed. Where the work is planned, the architect must be informed. The architect must be informed of the Contractor's Statutory Obligations. Crown Copyright reserved. Copyright Carey Jones Chapman & Jones Limited. Copyright.		Project: Britannia Street London	
		Job No: 23083	
		Title: Proposed East and West Elevation	
		Scale: 1:200 @ A1, 1:400 @ A3 SES	
		Date: May 2012	
		Drawn By: JSW	
		Checked By: JSW	
		Revision: C	
Vertical House, Southampton Row, Bloomsbury, London WC1B 4EA. Tel: +44 (0)20 7289 9400. Fax: +44 (0)20 7289 9401.		Royal Albert, East Street, Leeds LS9 8BE. Tel: +44 (0)113 224 5000. Fax: +44 (0)113 224 5001.	
Recently House, 49 Piccadilly, Manchester M1 2AP. Tel: +44 (0) 161 212 1180.		H&S careyjones.com	
careyjones		champanitochner	
Planning			