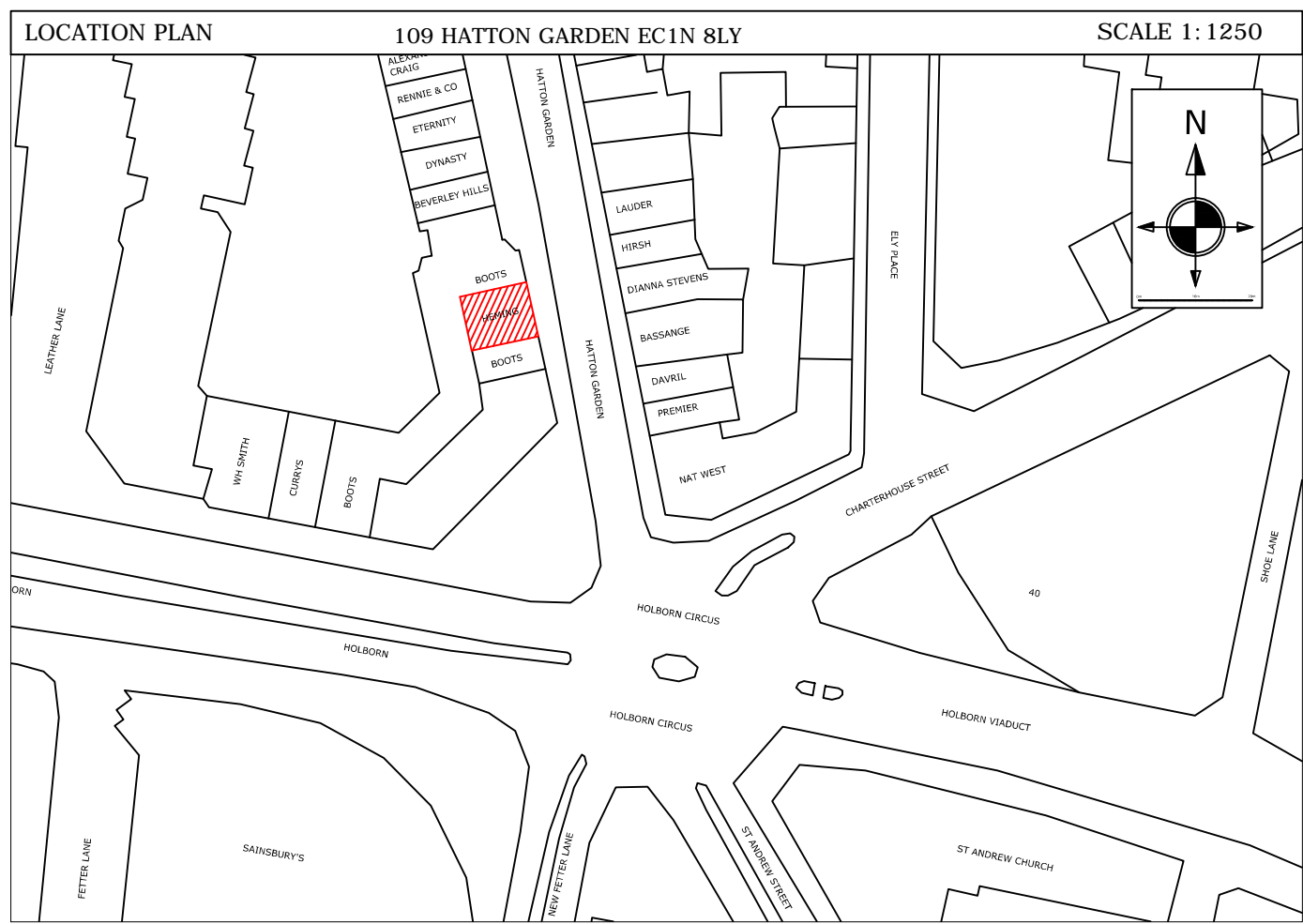
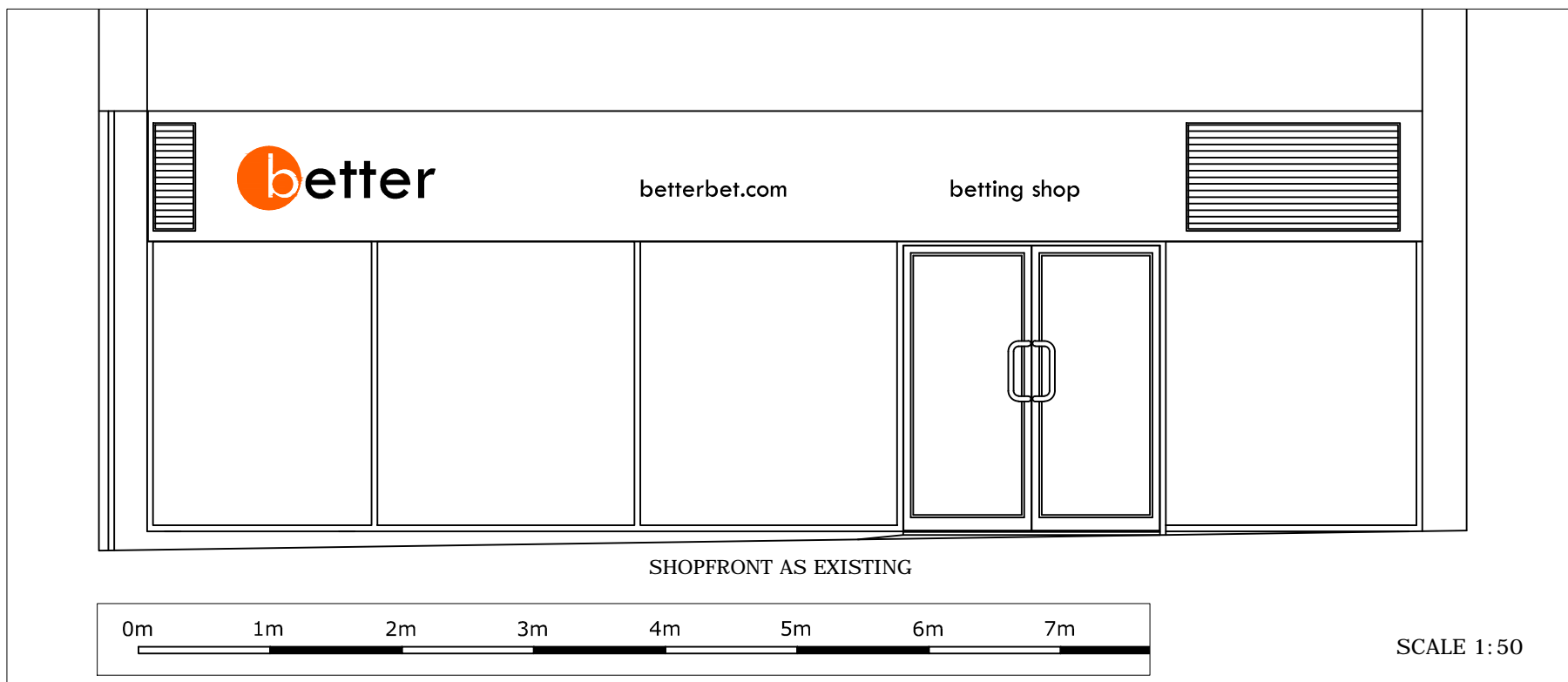
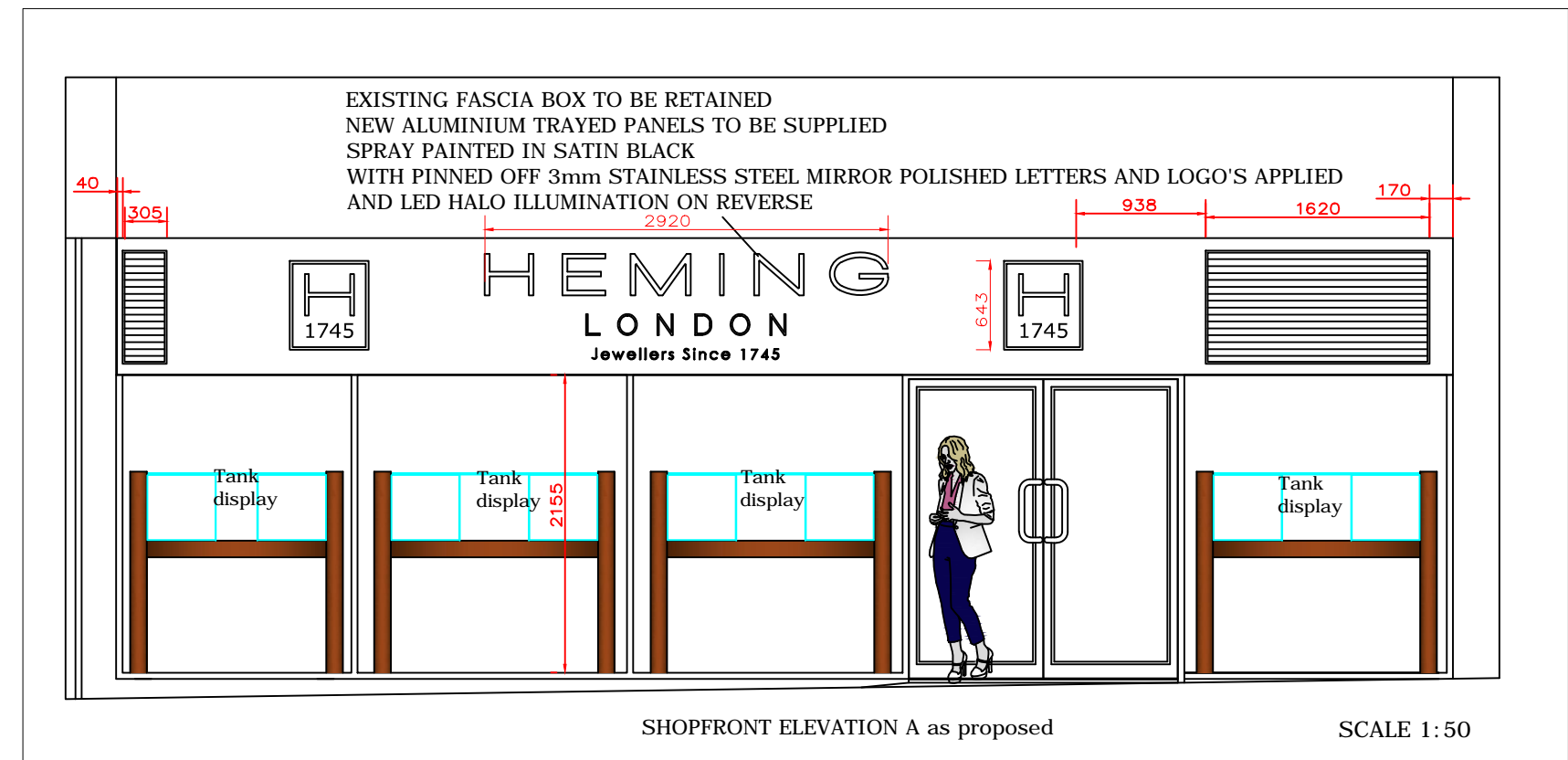
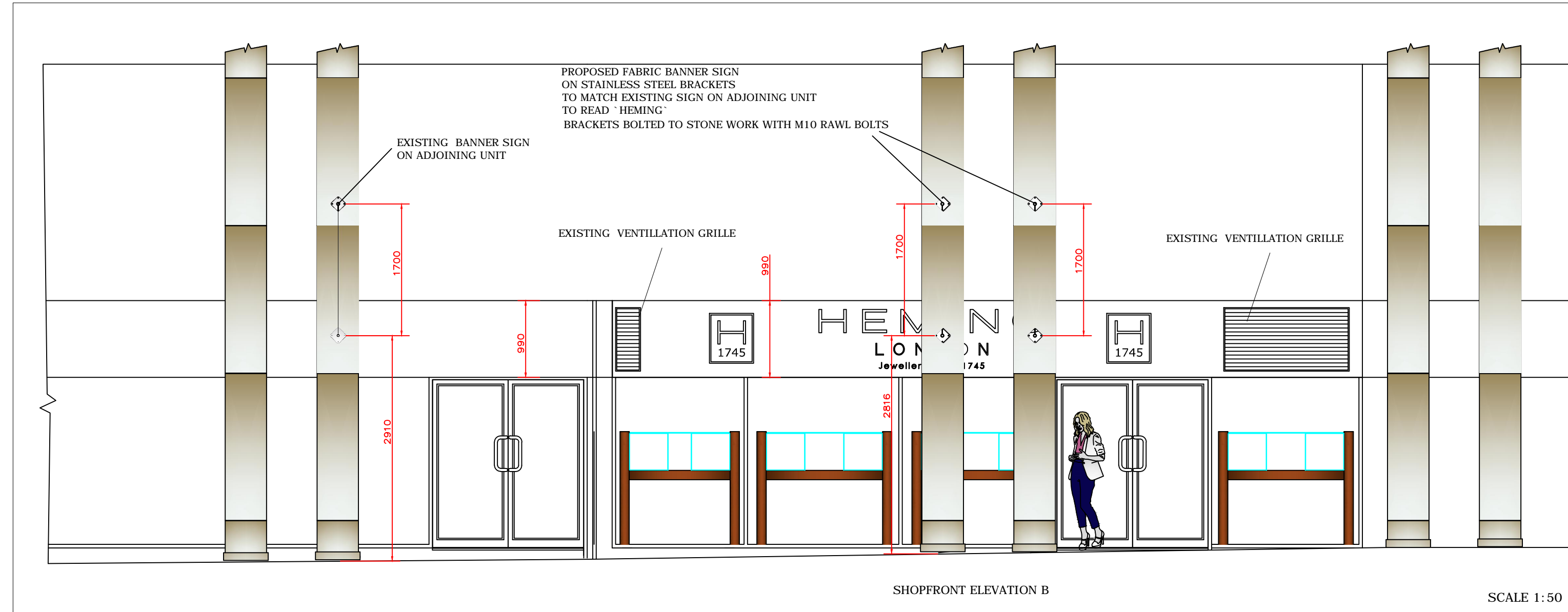
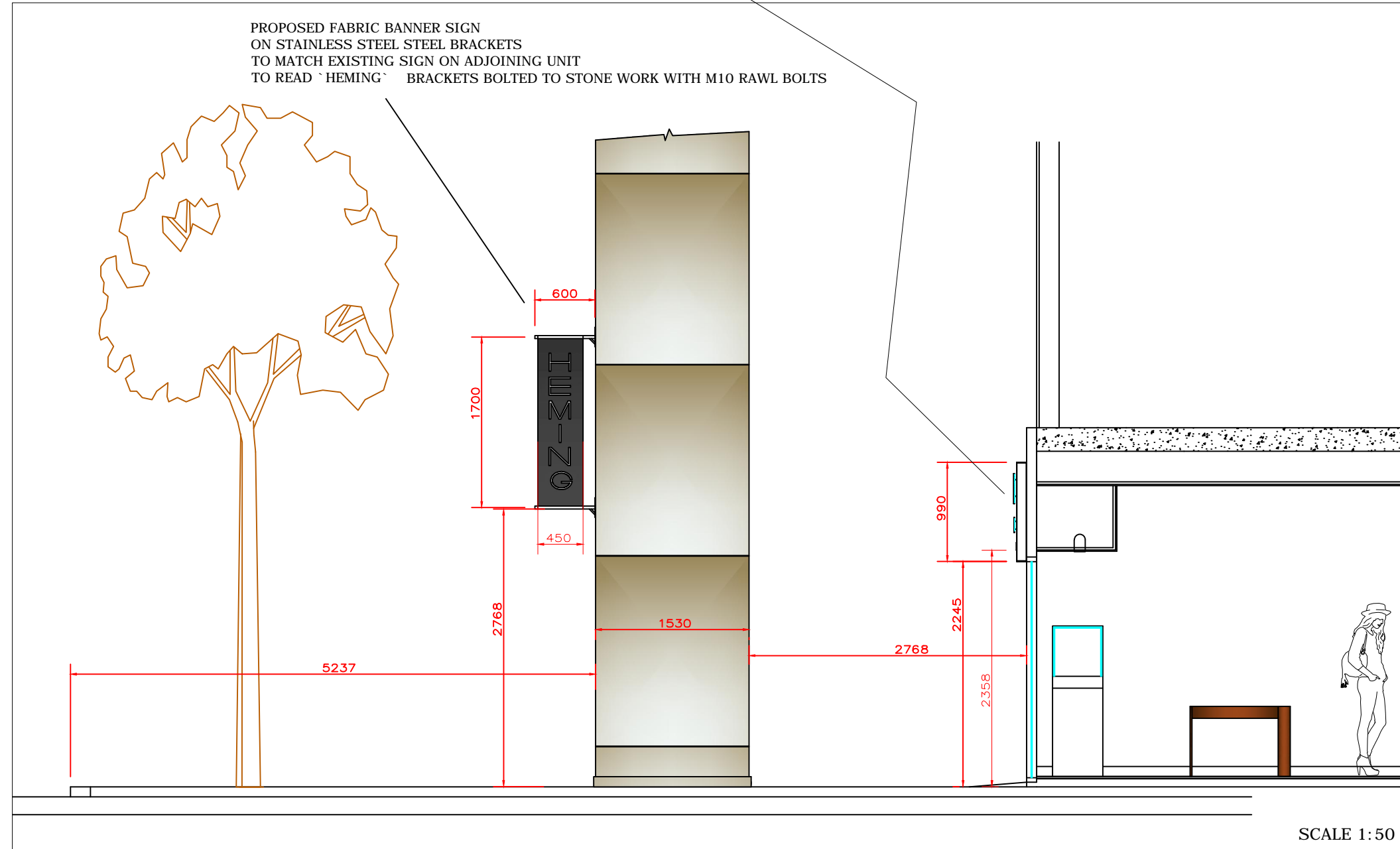


EXISTING FASCIA BOX TO BE RETAINED
NEW ALUMINIUM TRAYED PANELS TO BE SUPPLIED
SPRAY PAINTED IN SATIN BLACK
WITH PINNED OFF 3mm STAINLESS STEEL MIRROR POLISHED LETTERS AND LOGO'S APPLIED
AND LED HALO ILLUMINATION ON REVERSE



Revision A 17/8/12
1 Fascia changed to Black
2 Letters now Halo illuminated

| | | | |
|---|---|----------------------------|--|
| | Client: HEMING | | |
| | Project: 109 HATTON GARDEN SHOPFRONT | | |
| | Drawn By: Colin Ferguson | Date: 24/6/12 | |
| | Scale: 1:50 @ A1 | Rev No: HHG-06 | |
| Email: colin@cjdesignprojects.co.uk | | www.cjdesignprojects.co.uk | |

This drawing remains the property of and is issued on condition that it is not distributed or copied in part or whole to any other unauthorised person without the prior consent of CJ Design Projects Ltd.