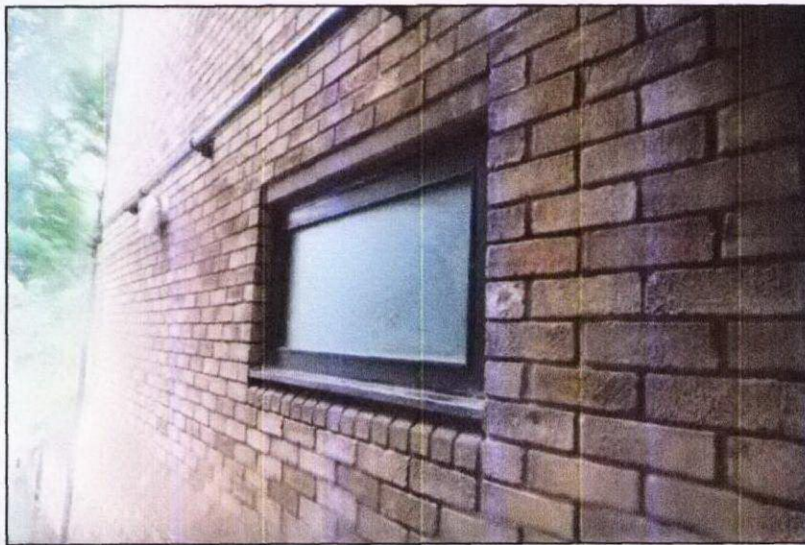
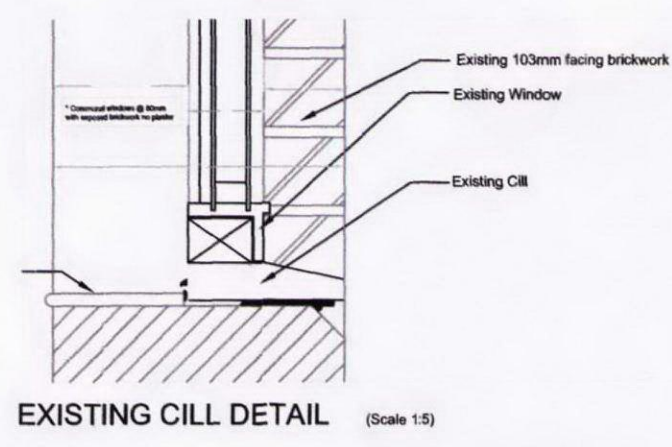
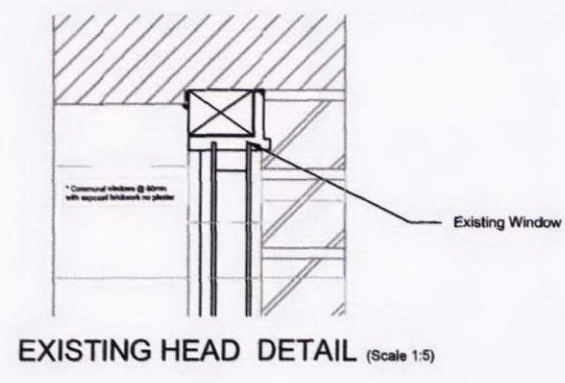


EXISTING DETAILS

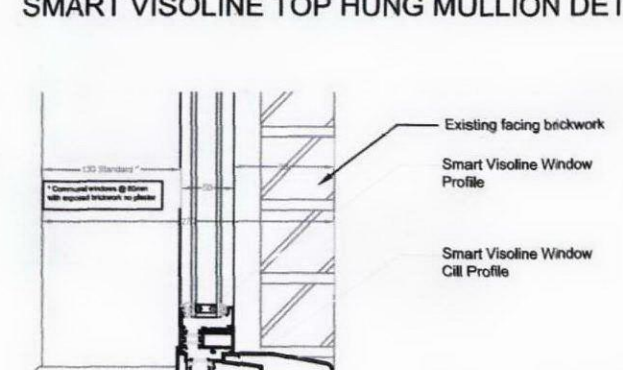
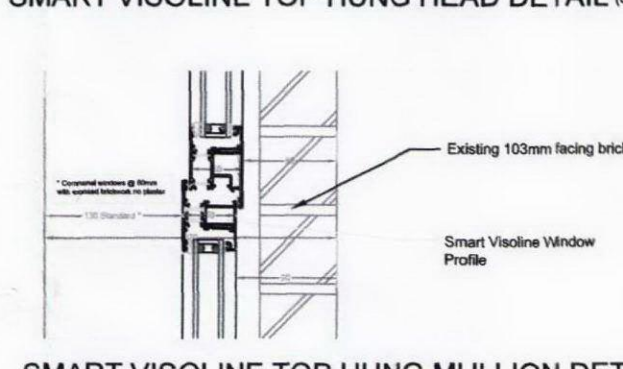
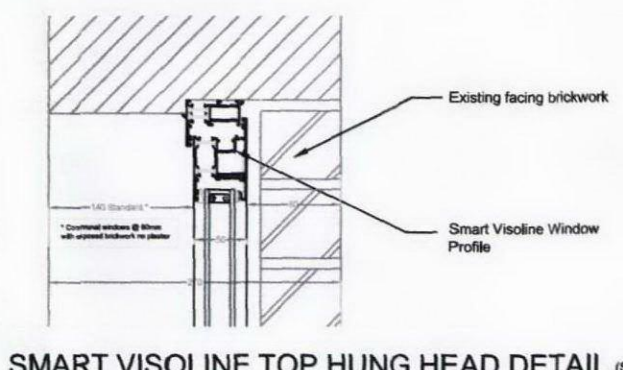


Photograph illustrating relationship of existing window cill to existing chamfered brickwork

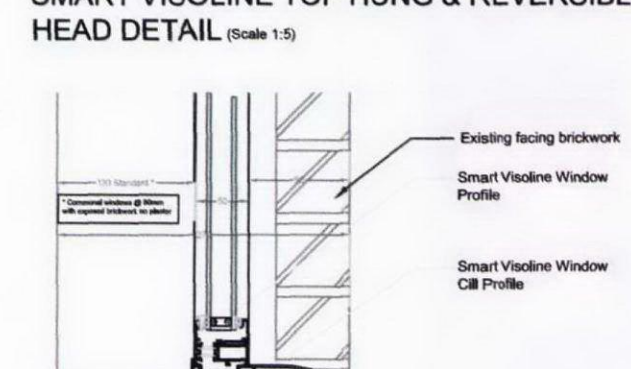
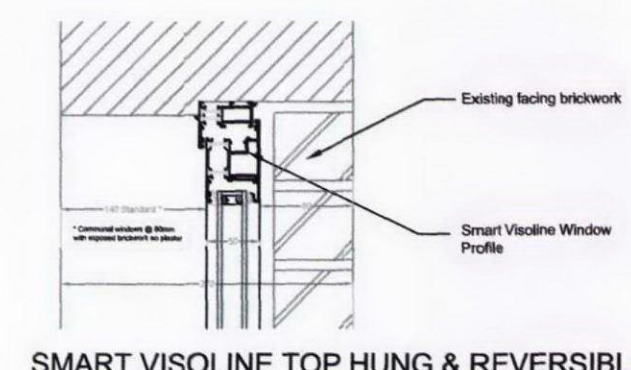


Photograph illustrating the mixture of existing window frame finishes

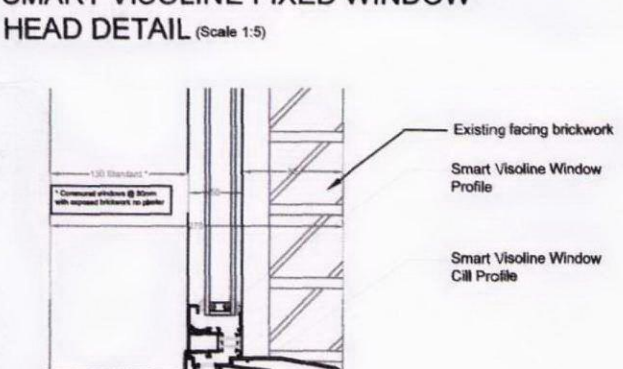
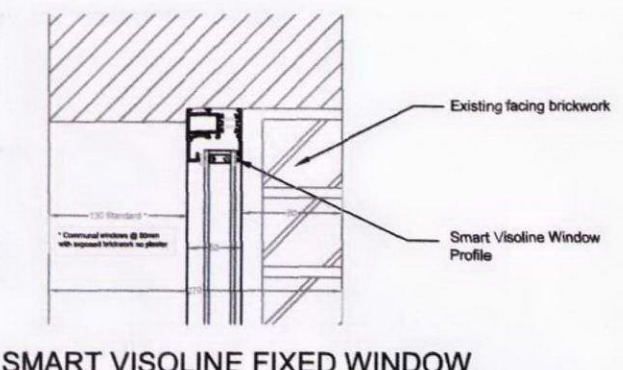
PROPOSED DETAILS



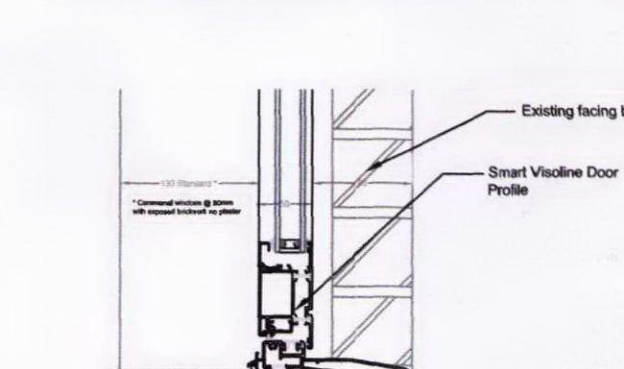
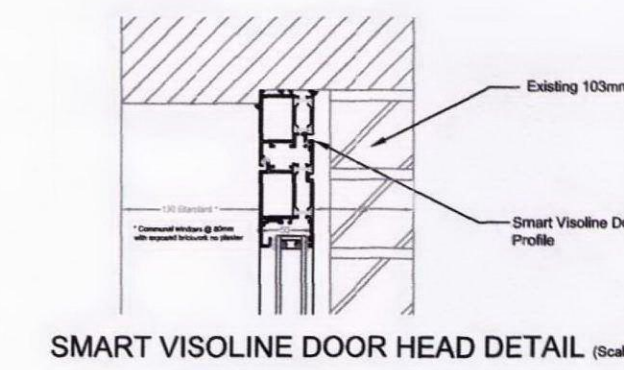
SMART VISOLINE TOP HUNG CILL DETAIL (Sheet 10)



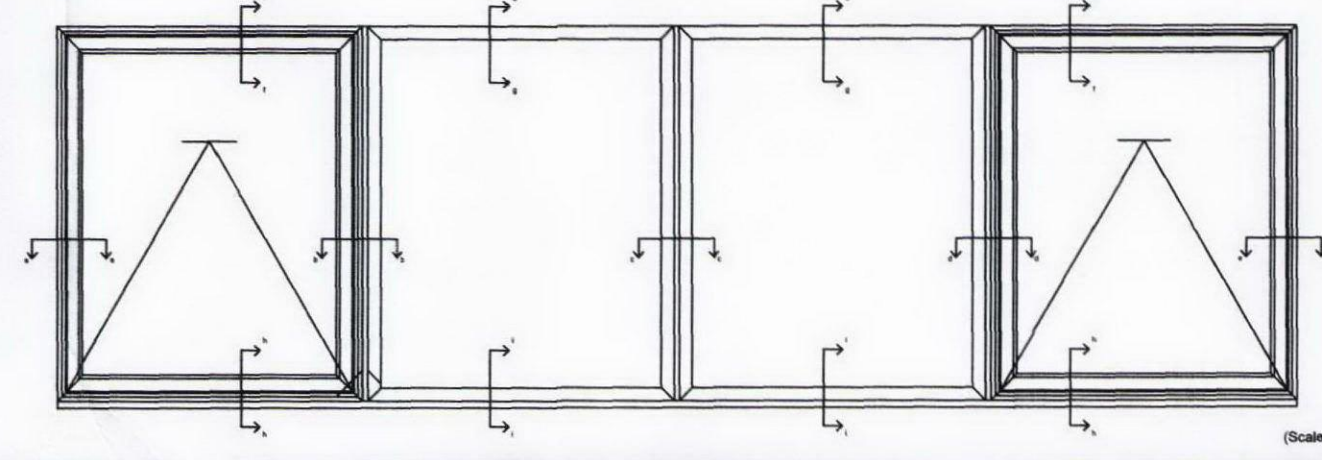
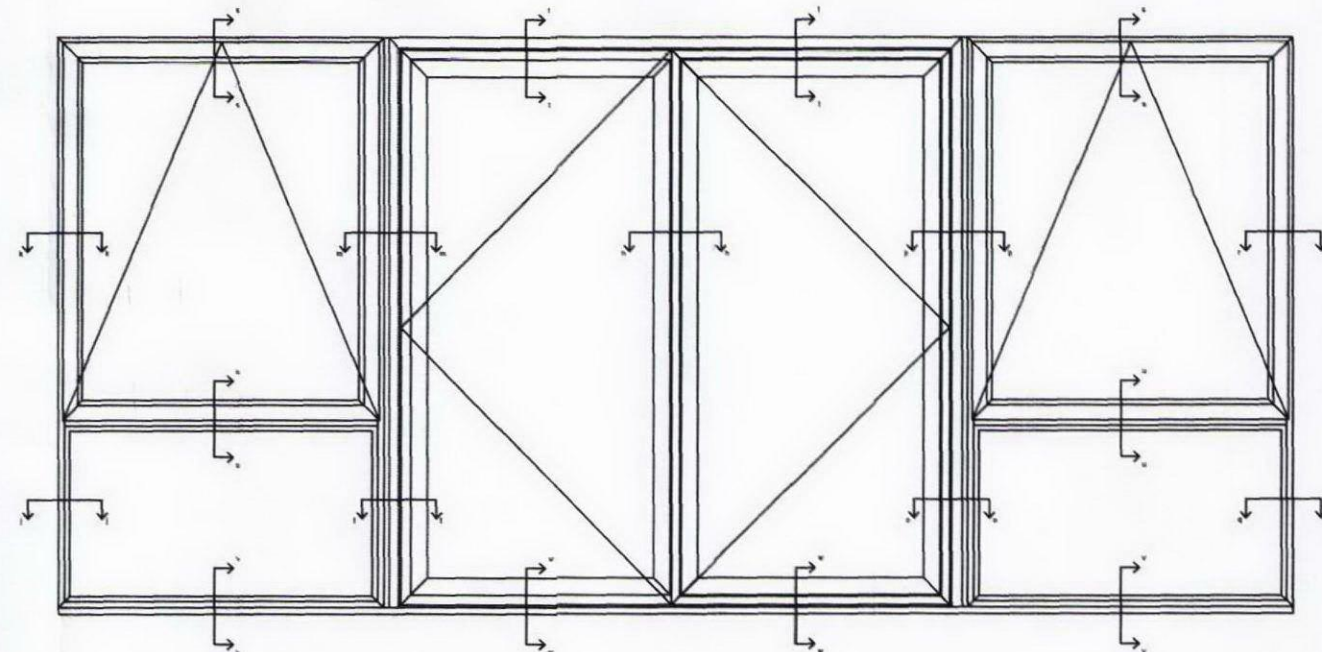
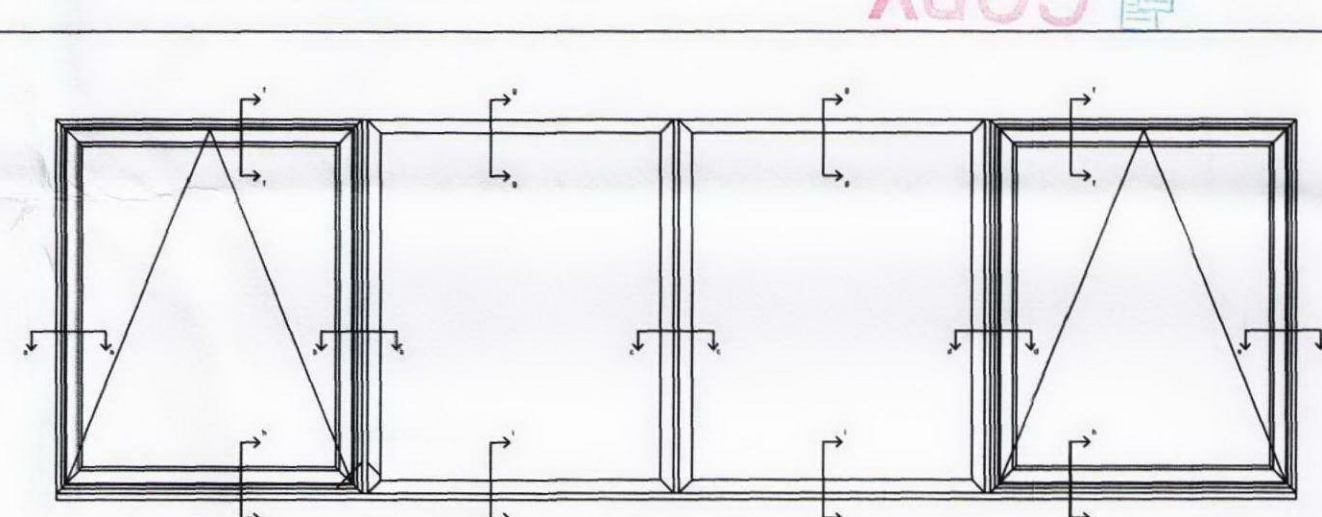
SMART VISOLINE TOP HUNG & REVERSIBLE CILL DETAIL (Sheet 10)



SMART VISOLINE FIXED WINDOW CILL DETAIL (Sheet 10)



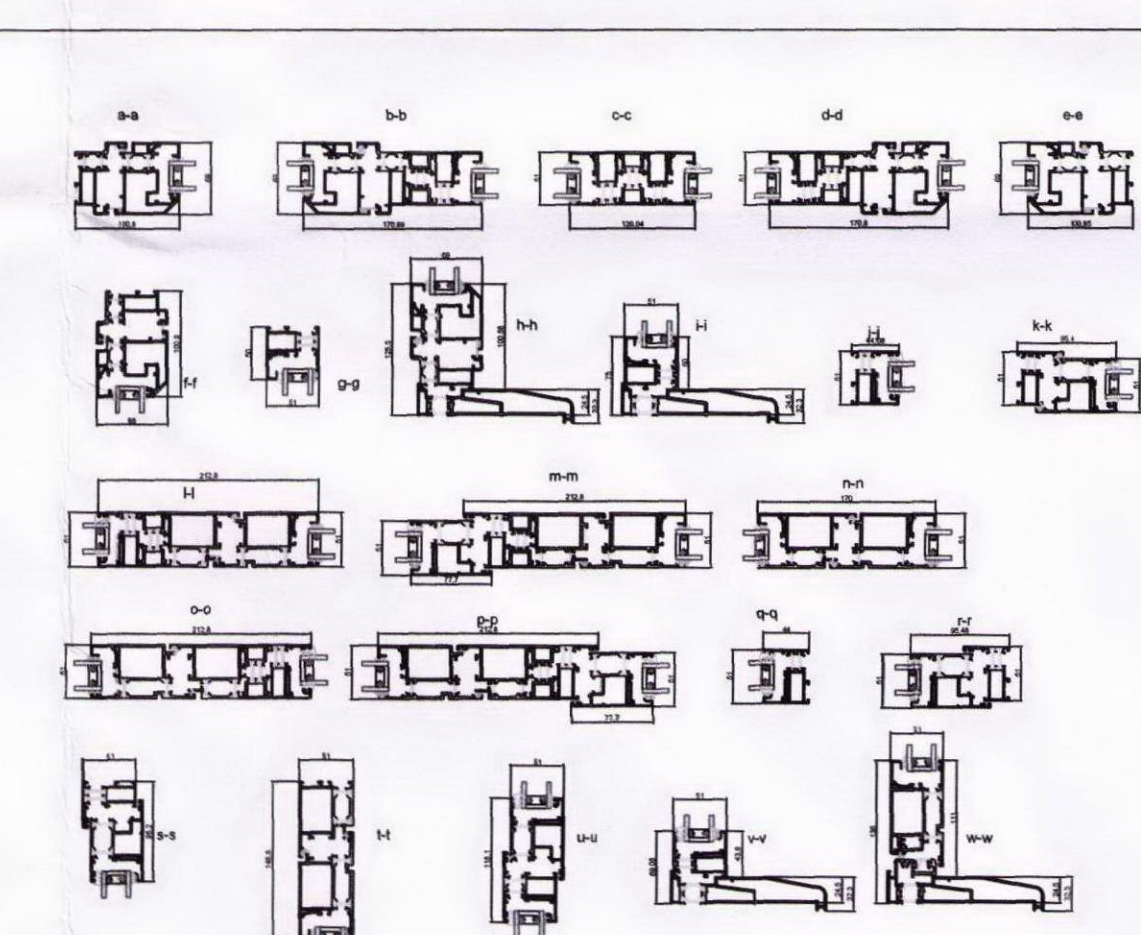
SMART VISOLINE DOOR CILL DETAIL (Sheet 10)



NOTES & SPECIFICATIONS

DESIGNED FOR USE AS FIXED LIGHTS, SIDE OR TOP HUNG OPEN OR FULLY REVERSIBLE.
 INTERNALLY BEADED, FOR DOMESTIC AND LIGHT / MEDIUM COMMERCIAL APPLICATIONS.
 THERMAL BREAKS ARE FORMED WITH POLYAMINE STRIPS PA 6.6 25 REINFORCED WITH GLASS FIBRE, FITTED BETWEEN ALUMINIUM EXTRUSIONS.
 ALL PROFILES ARE EXTRUDED FROM ALUMINIUM ALLOY 6060/6063 T5/T6 AND COMPLY WITH THE RECOMMENDATIONS OF BS EN 12202-2:2001/BS 755-9:2001.
 PROFILES CAN BE ELECTROSTATIC POWDER COAT FINISHED IN A RANGE OF RAL COLOURS TO AFA QUALITY GUIDELINES WITH THE OPTION OF BI-COLOUR.
 DIFFERENT INTERNAL AND EXTERNAL COLOURS. OTHER FINISHES INCLUDE ANODISED IN SATIN OR BRILLIANT COLOUR WITH ENA/ELC/ELC2 QUALITY LABEL.
 POWDER-COATED WOODGRAIN FINISHES ARE AVAILABLE ON REQUEST.
 ALL OPENING UNITS ARE MADE ON NON-CORRODING HARDWARE AND FITTED WITH SHIP-LOCK MULTI-POINT LOCKING MECHANISMS.
 GLAZING CONFORMS TO THE REQUIREMENTS OF BS 6262 AND PART 1B OF THE BUILDING REGULATIONS FOR BOTH THICKNESS AND TYPE.
 INTERNAL BEADS AND GASKETS TO ACCOMMODATE 28MM DOUBLE GLAZED UNITS WITH CENTRE PANE U-VALUE OF 1.2.
 PRODUCT TESTED TO BS 6375 PART 1 WEATHER TIGHTNESS CLASSIFICATION:
 AIR PERMEABILITY CLASS: C1
 WATER TIGHTNESS: 300Pa
 WIND RESISTANCE: 3000Pa
 WINDOWS ARE MANUFACTURED TO THE REQUIRED DESIGN TO LIMITATIONS AS STATED WITHIN TECHNICAL MANUALS (SUBJECT TO LOCATION).
 SUBJECT TO AGREEMENT IT IS POSSIBLE TO EXCEED THESE LIMITATIONS DEPENDING ON DESIGN DETAILS. CONTACT SMART SYSTEMS TECHNICAL DEPARTMENT FOR DETAILS.
 CONSULT SMART SYSTEMS LTD TECHNICAL LITERATURE FOR DETAILS. SMART SYSTEMS LTD CAN ALSO PROVIDE DESIGN AND SPECIFICATION GUIDANCE AND IT IS RECOMMENDED THAT THEY ARE CONSULTED EARLY IN THE DESIGN PROCESS.
 MANUFACTURER: SMART SYSTEMS LTD, ANNULS WAY, YATTON, NORTH SOMERSET BS54 4JN. TEL: 01934 874000. FAX: 01934 85516.
 EMAIL: SALES@SMARTSYSTEMS.CO.UK. WEB: WWW.SMARTSYSTEMS.CO.UK
 PRODUCT REFERENCE: VISOLINE WINDOW
 MATERIALS: ALL PROFILES ARE EXTRUDED FROM ALUMINIUM ALLOY 6060/6063 T5/T6 AND COMPLY WITH THE RECOMMENDATIONS OF BS EN 12202-2:2001/BS 755-9:2001.
 THERMAL BREAKS ARE FORMED WITH POLYAMINE STRIPS PA 6.6 25 REINFORCED WITH GLASS FIBRE SECTIONS CAPABLE OF WITHSTANDING TEMPERATURES UP TO 200°C FOR OVER PAINTING.
 STRUCTURE: ALL STRUCTURAL PROFILES TO BE DESIGNED SO AS TO LIMIT DEFLECTION OF ANY GLASS EDGE INTO A FRAMING MEMBER UNDER WINDLOAD SHALL NOT EXCEED L/175 OF ITS SPAN WITH NO EVIDENCE OF ANY PERMANENT DEFORMATION ONCE THE LOAD HAS BEEN REMOVED. ALL HORIZONTAL FRAMING MEMBERS TO RESTRICT DEAD LOAD DEFLECTION TO L/100, UP TO A MAXIMUM OF 3MM.
 CONSTRUCTION: ALL DOORSETS SHALL BE MANUFACTURED, INSTALLED AND GLAZED IN STRICT ACCORDANCE WITH SMART SYSTEMS INSTRUCTIONS AND GUIDELINES AS SET DOWN IN THE APPROPRIATE TECHNICAL LITERATURE, DETAILS AND SPECIFICATIONS.
 DEPTH OF OUTER FRAME SECTIONS SHALL BE 51MM INCORPORATING TWO 16.8MM POLYAMINE THERMAL BREAK SECTIONS WITHIN THE WINDOW PROFILES.
 ALL OUTER FRAME AND VENT MEMBERS TO BE 15° MITRED CORNER CONSTRUCTION, REINFORCED BY MEANS OF EXTRUDED ALUMINIUM CLEATS AND STAINLESS STEEL CORNER BRACES.

2012/4049/P
 COPY



ALL PROFILES (Sheet 10)

ALL CORNER JOINTS TO BE SECURED BY GLUING & DRIPPING OF GLUING AND MECHANICAL CORNER CLEATS.
 ALL WALLS AND TRANSOMS TO BE CUT-SHAPED AND SECURED USING EITHER STAINLESS STEEL SCREWS DRIVEN INTO INTERNAL SCREW PORTS WITHIN THE SECTIONS OR CONCRETE/CLAY CLEATS.
 ALL JOINTS TO BE SEALED DURING CONSTRUCTION USING SUITABLE "SMALL GAP" SEALANT.
 THE WINDOWS TO INCORPORATE AN INTERNAL PRESSURE EQUALISED DRAINAGE SYSTEM WITH CONCEALED DOWN DRAINAGE THROUGH A SUB SILL OR FRONTAL DRAINAGE WITH SNAP ON COVER CAPS.

FINISH AS DELIVERED:
 INTERNAL COLOUR: BROWN OR BLACK
 EXTERNAL COLOUR: BROWN OR BLACK
 GLAZING DETAILS: 28MM SEALED UNITS
 OUTER PANE LHM: PLANILUX CLEAR FLOAT
 20MM BLACK SWISS V WARM EDGE SPACER
 INNER PANE LHM: PLANTHERM TOTAL CLEAR FLOAT WITH SOFT LOW E COAT
 90% ARGON FILL
 TOUCHED WHERE REQUIRED

CENTRE PANE U VALUE OF 1.2 WINDOW
 WINDOWS SHALL BE GLAZED AND INTERNALLY WITH SQUARE BEAD.
 UNIT THICKNESS OVERALL THICKNESS OF 28MM WITH CENTRE PANE U-VALUE OF 1.2

ALL INTERNAL GLAZED WINDOWS TO BE SET GLAZED USING SNAP IN EXTRUDED ALUMINIUM BEADS AND EPDM EXTRUDED GASKETS.
 BROWSEWAY / ACCESSORIES: OPEN OUT CASSETTE WINDOWS TO HAVE LOCKING SUBSTITUTES AND PRECTION SLIP HANDLES. REVERSIBLES WINDOWS TO HAVE FULLY REVERSIBLE HINGE GEARING ALLOWING THE SASH TO BE RECESSED FOR EASY CLEANING ONCE A RESTRICTOR IS RELEASED.

PROFILES:
 REVERSIBLE:
 R1000 OUTER FRAME
 R1002 VENT FRAME
 R1003 TRANSOM
 ETC103 150MM CILL

FIXED LIGHTS:
 V100 OUTER FRAME
 ETC103 150MM CILL

TOP HUNG CASSETTE:
 R1000 OUTER FRAME
 R1002 VENT FRAME
 R1003 MULLION
 ETC103 150MM CILL

FIXING:
 ALL FIXINGS TO BE IN STRICT ACCORDANCE WITH THE RELEVANT BRITISH STANDARDS, INCLUDING BS 6262, AND SHALL ENSURE THE WINDOW IS RETAINED SECURELY WITHIN THE OPENING WITHOUT INCURRING ANY DAMAGE OR DISTORTION TO THE WINDOW FRAME.
 GENERALLY FIXINGS TO BE POSITIONED 50MM FROM EACH CORNER AND EACH MULLION/TRANSOM AND AT CENTRES NOT EXCEEDING 600MM.
 FIXING LOGS/STRAPS ONLY TO BE USED WHERE THEY CAN BE SUITABLY CONCEALED TO APPROVAL.
 ALL FIXING OF ROOM FIXINGS TO THE SUPPORTING STRUCTURE TO BE ACHIEVED USING A SUITABLE LOG AND/OR FRAME ANCHOR FIXING METHOD CAPABLE OF ACCOMMODATING ALL APPLICABLE LOADS, DEFLECTION, TOLERANCES AND EXPANSION EXPECTED ON SITE.

VISOLINE DOOR
 DESIGNED FOR USE AS OPEN OUT OR OPEN IN, SINGLE, DOUBLE, INTERNALLY BEADED, WITH SILENT OPTION, FOR DOMESTIC AND LIGHT / MEDIUM COMMERCIAL APPLICATIONS.
 DOOR AND DOOR FRAMES ARE EXTRUDED FROM ALUMINIUM ALLOY 6060/6063 T5/T6 AND COMPLY WITH THE RECOMMENDATIONS OF BS EN 12202-2:2001/BS 755-9:2001.
 PROFILES CAN BE ELECTROSTATIC POWDER COAT FINISHED IN A RANGE OF RAL COLOURS TO AFA QUALITY GUIDELINES WITH THE OPTION OF BI-COLOUR, DIFFERENT INTERNAL AND EXTERNAL COLOURS. OTHER FINISHES INCLUDE ANODISED IN SATIN OR BRILLIANT COLOUR WITH ENA/ELC/ELC2 QUALITY LABEL. POWDER-COATED WOODGRAIN FINISHES ARE AVAILABLE ON REQUEST.
 ALL DOORS ARE MADE ON FACE FIX FLANG VENT HINGES AND FITTED WITH MULTIPOINT LOCKING MECHANISM.
 GLAZING CONFORMS TO THE REQUIREMENTS OF BS 6262 AND PART 1B OF THE BUILDING REGULATIONS FOR BOTH THICKNESS AND TYPE. WEATHERSEALS ARE EPDM SET IN URETHANE CHANNELS.
 INTERNAL BEADS AND GASKETS TO ACCOMMODATE 28MM DOUBLE GLAZED UNITS WITH CENTRE PANE U-VALUE OF 1.2.
 DOORS ARE MANUFACTURED ACCORDING TO OUTDOOR REQUIREMENTS FROM A RANGE OF STANDARD PROFILES AND ARE DESIGNED TO INCORPORATE A RANGE OF OPTIONS.
 WHERE IT IS ADVISABLE TO CONTACT SMART SYSTEMS TECHNICAL DESIGN DEPARTMENT EARLY IN THE DESIGN PROCESS.
 CONSULT SMART SYSTEMS LTD TECHNICAL LITERATURE FOR DETAILS. SMART SYSTEMS LTD CAN ALSO PROVIDE DESIGN AND SPECIFICATION GUIDANCE AND IT IS RECOMMENDED THAT THEY ARE CONSULTED EARLY IN THE DESIGN PROCESS.

MANUFACTURER: SMART SYSTEMS LTD, ANNULS WAY, YATTON, NORTH SOMERSET BS54 4JN. TEL: 01934 874000.
 FAX: 01934 85516. EMAIL: SALES@SMARTSYSTEMS.CO.UK. WEB: WWW.SMARTSYSTEMS.CO.UK
 PRODUCT REFERENCE: VISOLINE DOOR
 MATERIALS: ALL PROFILES ARE EXTRUDED FROM ALUMINIUM ALLOY 6060/6063 T5/T6 AND COMPLY WITH THE RECOMMENDATIONS OF BS EN 12202-2:2001/BS 755-9:2001.
 THERMAL BREAKS ARE FORMED WITH POLYAMINE STRIPS PA 6.6 25 REINFORCED WITH GLASS FIBRE SECTIONS CAPABLE OF WITHSTANDING TEMPERATURES UP TO 200°C FOR OVER PAINTING.
 STRUCTURE: ALL STRUCTURAL PROFILES TO BE DESIGNED SO AS TO LIMIT DEFLECTION OF ANY GLASS EDGE INTO A FRAMING MEMBER UNDER WINDLOAD SHALL NOT EXCEED L/175 OF ITS SPAN WITH NO EVIDENCE OF ANY PERMANENT DEFORMATION ONCE THE LOAD HAS BEEN REMOVED. ALL HORIZONTAL FRAMING MEMBERS TO RESTRICT DEAD LOAD DEFLECTION TO L/100, UP TO A MAXIMUM OF 3MM.
 CONSTRUCTION: ALL DOORSETS SHALL BE MANUFACTURED, INSTALLED AND GLAZED IN STRICT ACCORDANCE WITH SMART SYSTEMS INSTRUCTIONS AND GUIDELINES AS SET DOWN IN THE APPROPRIATE TECHNICAL LITERATURE, DETAILS AND SPECIFICATIONS.
 DEPTH OF OUTER FRAME SECTIONS SHALL BE 51MM INCORPORATING TWO 16.8MM POLYAMINE THERMAL BREAK SECTIONS WITHIN THE WINDOW PROFILES.
 ALL OUTER FRAME AND DOOR MEMBERS TO BE 15° MITRED CORNER CONSTRUCTION, REINFORCED BY MEANS OF EXTRUDED ALUMINIUM CLEATS AND STAINLESS STEEL CORNER BRACES.
 ALL CORNER JOINTS TO BE SECURED BY GLUING AND DRIPPING OF GLUING AND MECHANICAL CORNER CLEATS.
 ALL WALLS AND TRANSOMS TO BE CUT-SHAPED AND SECURED USING EITHER STAINLESS STEEL SCREWS DRIVEN INTO INTERNAL SCREW PORTS WITHIN THE SECTIONS OR CONCRETE/CLAY CLEATS.
 ALL JOINTS TO BE SEALED DURING CONSTRUCTION USING SUITABLE "SMALL GAP" SEALANT.
 IT IS RECOMMENDED THAT THE DOOR SYSTEM BE DRAINED AND VENTILATED IN ACCORDANCE WITH SMART SYSTEMS TECHNICAL MANUAL. DRY AIR SHALL BE USED TO ALL DOORS.

FINISH AS DELIVERED:
 INTERNAL COLOUR: BROWN OR BLACK
 EXTERNAL COLOUR: BROWN OR BLACK
 GLAZING DETAILS: 28MM SEALED UNITS
 OUTER PANE LHM: PLANILUX CLEAR FLOAT
 20MM BLACK SWISS V WARM EDGE SPACER
 INNER PANE LHM: PLANTHERM TOTAL CLEAR FLOAT WITH SOFT LOW E COAT
 90% ARGON FILL
 TOUCHED WHERE REQUIRED

CENTRE PANE U VALUE OF 1.2 WINDOW
 WINDOWS SHALL BE GLAZED INTERNALLY WITH SQUARE BEAD.
 INTERNAL BEADS AND GASKETS TO ACCOMMODATE 28MM DOUBLE GLAZED UNITS WITH CENTRE PANE U-VALUE OF 1.2

PROFILES:
 DOOR:
 V100 OUTER FRAME
 V100 LOW THRESHOLD
 V125 SASH

FIXING:
 ALL FIXINGS TO BE IN STRICT ACCORDANCE WITH THE RELEVANT BRITISH STANDARDS, INCLUDING BS 6262, AND SHALL ENSURE THE DOOR FRAME IS RETAINED SECURELY WITHIN THE OPENING WITHOUT INCURRING ANY DAMAGE OR DISTORTION TO THE FRAME.
 GENERALLY FIXINGS TO BE POSITIONED 50MM FROM EACH CORNER AND EACH MULLION/TRANSOM AND AT CENTRES NOT EXCEEDING 600MM.
 FIXING LOGS/STRAPS ONLY TO BE USED WHERE THEY CAN BE SUITABLY CONCEALED TO APPROVAL.
 ALL FIXING OF ROOM FIXINGS TO THE SUPPORTING STRUCTURE TO BE ACHIEVED USING A SUITABLE LOG AND/OR FRAME ANCHOR FIXING METHOD CAPABLE OF ACCOMMODATING ALL APPLICABLE LOADS, DEFLECTION, TOLERANCES AND EXPANSION EXPECTED ON SITE.

PLANNING

APOLLO
 Sales | Marketing | Training

Accolite/Caradon
15 Belsize Avenue
 Belsize Park, London
 Existing & Proposed Window
 Details & Existing Photographs
 Date: AGJ
 Scale: 1:20 & 1:5 @ A0 Date: 29/09/2011

B15 AS 20