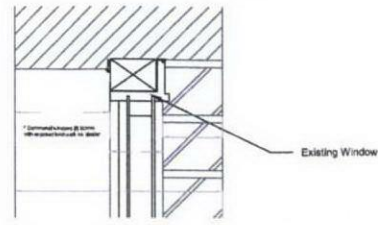
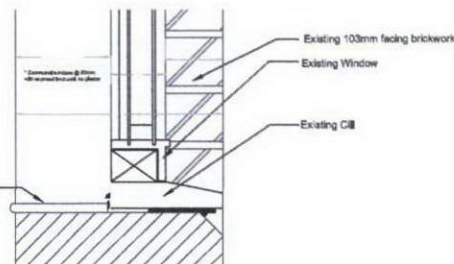


EXISTING DETAILS



EXISTING HEAD DETAIL (Scale 1:5)



EXISTING CILL DETAIL (Scale 1:5)

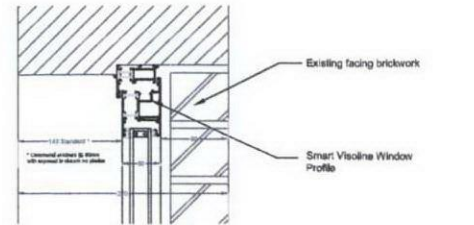


Photograph illustrating relationship of existing window cill to existing chamfered brickwork

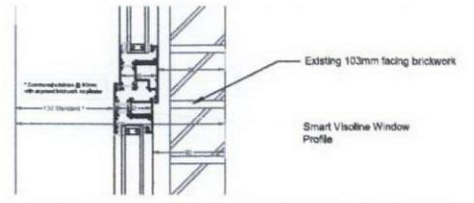


Photograph illustrating the mixture of existing window frame finishes

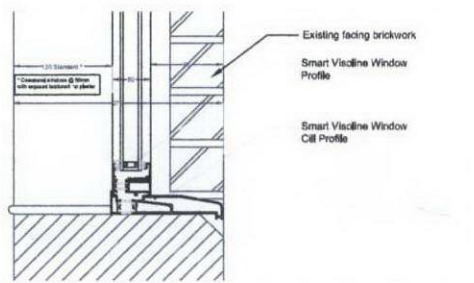
PROPOSED DETAILS



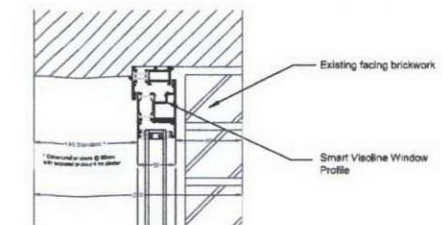
SMART VISOLINE TOP HUNG HEAD DETAIL (Scale 1:5)



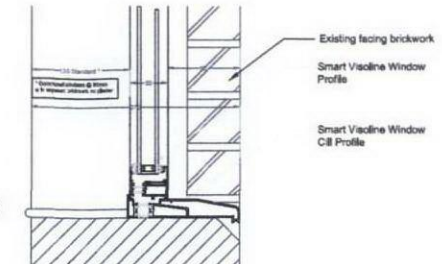
SMART VISOLINE TOP HUNG MULLION DETAIL (Scale 1:5)



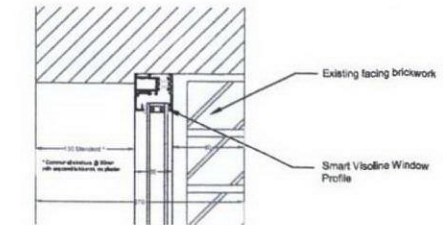
SMART VISOLINE TOP HUNG CILL DETAIL (Scale 1:5)



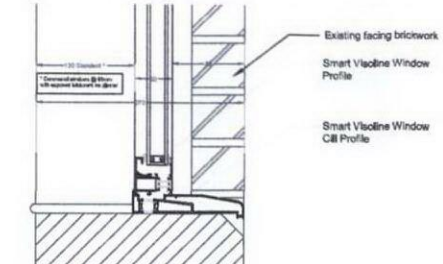
SMART VISOLINE TOP HUNG & REVERSIBLE HEAD DETAIL (Scale 1:5)



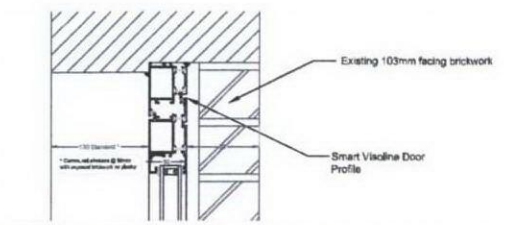
SMART VISOLINE TOP HUNG & REVERSIBLE CILL DETAIL (Scale 1:5)



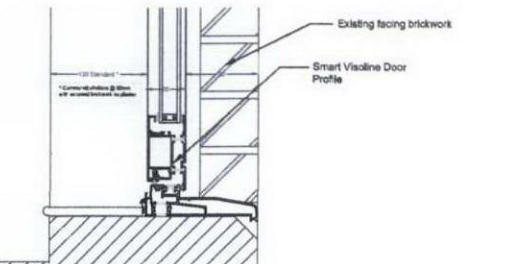
SMART VISOLINE FIXED WINDOW HEAD DETAIL (Scale 1:5)



SMART VISOLINE FIXED WINDOW CILL DETAIL (Scale 1:5)



SMART VISOLINE DOOR HEAD DETAIL (Scale 1:5)



SMART VISOLINE DOOR CILL DETAIL (Scale 1:5)

NOTES & SPECIFICATIONS

DESIGNED FOR USE AS FIXED LIGHTS, SIDE OR TOP HUNG OPEN OUT CASEMENTS OR FULLY REVERSIBLE INTERNALLY BEADED, FOR DOMESTIC AND LIGHT / MEDIUM / HEAVY COMMERCIAL APPLICATIONS.

THERMAL BREAKS ARE FINISHED WITH POLYAMIDE STRIPS PA 6.6 ZS REINFORCED WITH GLASS FIBRE, FITTED BETWEEN ALUMINIUM EXTRUSIONS.

ALL PROFILES ARE EXTRUDED FROM ALUMINIUM ALLOY 6060/6063 T5/T6 AND COMPLY WITH THE RECOMMENDATIONS OF BS EN 12020-2:2001/BS 755-9:2001.

PROFILES CAN BE ELECTROSTATIC POWDER COAT FINISHED IN A RANGE OF RAL COLOURS TO APA QUALICOAT GUIDELINES WITH THE OPTION OF BI-COLOUR, DIFFERENT INTERNAL AND EXTERNAL COLOURS. OTHER FINISHES INCLUDE ANODISED IN SATIN OR BRONZE COLOURS WITH ENVA/EURAS-QUALIFIED QUALITY LABEL. POWDER-COATED WOODSTRUCTURE FINISHES ARE AVAILABLE ON REQUEST.

ALL OPENING VENTS ARE HUNG ON NON-CORRODIBLE HARDWARE AND FITTED WITH SHOT BOLT/MULTI-POINT LOCKING MECHANISMS.

GLAZING CONFORMS TO THE REQUIREMENTS OF BS 6262 AND PART 1 OF THE BUILDING REGULATIONS FOR BOTH THICKNESS AND TYPE.

INTERNAL BEADS AND GASKETS TO ACCOMMODATE 28MM DOUBLE GLAZED UNITS WITH CENTRE PANE U-VALUE OF 1.2.

PRODUCT TESTED TO BS 8375: PART 1, WEATHER TIGHTNESS CLASSIFICATION: AIR PERMEABILITY CLASS 3; WATER TIGHTNESS 500PA; WIND RESISTANCE 25C/Pa.

WINDOWS ARE MANUFACTURED TO THE REQUIRED DESIGN TO LIMITATIONS AS STATED WITHIN TECHNICAL MANUALS (SUBJECT TO LOCATION).

SUBJECT TO AGREEMENT IT IS POSSIBLE TO EXCEED THESE LIMITATIONS DEPENDING ON DESIGN CRITERIA, CONTACT SMART SYSTEMS TECHNICAL DEPARTMENT FOR DETAILS.

CONSULT SMART SYSTEMS LTD TECHNICAL LITERATURE FOR DETAILS. SMART SYSTEMS LTD CAN ALSO PROVIDE DESIGN AND SPECIFICATION GUIDANCE AND IT IS RECOMMENDED THAT THEY ARE CONSULTED EARLY IN THE DESIGN PROCESS.

MANUFACTURER: SMART SYSTEMS LTD, ANHOLDERS WAY, YATTON, NORTH SOMERSET BS10 6LN, TEL: 01934 876100, FAX: 01934 835169, EMAIL: SALES@SMARTSYSTEMS.CO.UK, WEB: WWW.SMARTSYSTEMS.CO.UK

PRODUCT REFERENCE: VISOLINE WINDOWS

MATERIALS: ALL PROFILES ARE EXTRUDED FROM ALUMINIUM ALLOY 6060/6063 T5/T6 AND COMPLY WITH THE RECOMMENDATIONS OF BS EN 12020-2:2001/BS 755-9:2001. THERMAL BREAKS ARE FORMED WITH POLYAMIDE STRIPS PA 6.6 ZS REINFORCED WITH GLASS FIBRE SECTIONS CAPABLE OF WITHSTANDING TEMPERATURES UP TO 200°C FOR OVER PAINTING.

THERMAL TEST REQUIREMENTS AS LAID DOWN IN PART L BUILDING REGULATIONS

STRUCTURE: ALL STRUCTURAL PROFILES TO BE DESIGNED SO AS TO LIMIT DEFLECTION OF ANY GLASS EDGE INTO A FRAMING MEMBER UNDER WINDLOAD SHALL NOT EXCEED L/175 OF ITS SPAN WITH NO EVIDENCE OF ANY PERMANENT DEFORMATION ONCE THE LOAD HAS BEEN REMOVED. ALL HORIZONTAL FRAMING MEMBERS TO RESTRICT DEAD LOAD DEFLECTION TO L/400, UP TO A MAXIMUM OF 3MM CONSTRUCTION.

DEPTH OF CUTTER FRAME SECTIONS SHALL BE 51 MM INCORPORATING TWO 18.6MM POLYAMIDE THERMAL BREAK SECTIONS WITHIN THE WINDOW PROFILES. ALL OUTER FRAMES AND VENT MEMBERS TO BE 65° MITRED CORNER CONSTRUCTION, REINFORCED BY MEANS OF EXTRUDED ALUMINIUM CLEATS AND STAINLESS STEEL CORNER BRACES.

ALL CORNER JOINTS TO BE SECURED BY GLUING & CRIPPING OR GLUING AND MECHANICAL CORNER CLEATS.

ALL MULLIONS AND TRANSOMS TO BE CUT/SHAPED AND SECURED USING EITHER STAINLESS STEEL SCREWS DRIVEN INTO INTEGRAL SCREW PORTS WITHIN THE SECTIONS OR CRUCIFORM CLEATS.

ALL JOINTS TO BE SEALED DURING CONSTRUCTION USING SUITABLE 'SMALL GAP' SEALANT.

THE WINDOWS TO INCORPORATE AN INTERNAL PRESSURE EQUALIZED DRAINAGE SYSTEM WITH CONCEALED DOWN DRAINAGE THROUGH A RUB BULB OR FRONTAL DRAINAGE WITH SNAP ON COVER CAPS.

FINISH AS DELIVERED:
INTERNAL COLOUR: BROWN OR BLACK.
EXTERNAL COLOUR: BROWN OR BLACK.

GLAZING DETAILS: 28MM SEALED UNITS

OUTER PANE 4MM PLANILUX CLEAR FLOAT

20MM BLACK SWISS V WARM EDGE SPACER

INNER PANE 4MM PLANITHERM TOTAL CLEAR FLOAT WITH SOFT LOW E COAT

90% ARGON FILL

TOUGHENED WHERE REQUIRED.

CENTRE PANE U VALUE OF 1.2 W/M²K

WINDOWS SHALL BE GLAZED INTERNALLY WITH SQUARE BEAD.

UNIT THICKNESS: OVERALL THICKNESS OF 28MM WITH CENTRE PANE U-VALUE OF 1.2

ALL INTERNAL GLAZED WINDOWS TO BE DRY GLAZED USING 'SNAP IN' EXTRUDED ALUMINIUM BEADS AND EPDM EXTRUDED GASKETS.

REVERSIBLE / ACCESSORIES: OPEN OUT CASEMENT WINDOWS TO HAVE LOCKING SHOOTBOLTS AND FRICTION STAY HINGES. REVERSIBLE WINDOWS TO HAVE FULLY REVERSIBLE HINGE BEARING ALLOWING THE SASH TO BE REVERSED FOR EASY CLEANING ONCE A RESTRICTOR IS RELEASED.

REVERSIBLE:
RV01C OUTER FRAME
RV02C VENT FRAME
ETC1E7 150MM CILL

FIXED LIGHTS:
VL10 OUTER FRAME
ETC1E7 150MM CILL

TOP HUNG CASEMENT:
IN01C OUTER FRAME
IN02C VENT FRAME
IN03C MULLION
ETC1E7 150MM CILL

FINISH:
ALL FININGS TO BE IN STRICT ACCORDANCE WITH THE RELEVANT BRITISH STANDARDS, INCLUDING BS 6262, AND SHALL ENSURE THE WINDOW IS RETAINED SECURELY WITHIN THE OPENING WITHOUT REQUIRING ANY DAMAGE OR DISTURBANCE TO THE WINDOW FRAME.

GENERALLY, FININGS TO BE POSITIONED 150MM FROM EACH CORNER AND EACH MULLION/TRANSOM AND AT CENTRES NOT EXCEEDING 600MM.

FINING LUGS/STRAPS ONLY TO BE USED WHERE THEY CAN BE SUITABLY CONCEALED TO APPROVAL.

ALL FINING OF WINDOWS TO THE SUPPORTING STRUCTURE TO BE ACHIEVED USING A SUITABLE LUG AND/OR FRAME ANCHOR FIXING METHOD CAPABLE OF ACCOMMODATING ALL APPLICABLE LOADS, DEFLECTION, TOLERANCES AND EXPANSION EXPECTED ON SITE.

VISOLINE DOOR
DESIGNED FOR USE AS OPEN OUT OR OPEN IN, SINGLE, DOUBLE, INTERNALLY BEADED, WITH sidelight options, FOR DOMESTIC AND LIGHT / MEDIUM COMMERCIAL APPLICATIONS.

DOOR AND DOOR FRAMES ARE EXTRUDED FROM ALUMINIUM ALLOY 6060/6063 T5/T6 AND COMPLY WITH THE RECOMMENDATIONS OF BS EN 12220-2:2001/BS 755-9:2001.

PROFILES CAN BE ELECTROSTATIC POWDER COAT FINISHED IN A RANGE OF RAL COLOURS TO APA QUALICOAT GUIDELINES WITH THE OPTION OF BI-COLOUR, DIFFERENT INTERNAL AND EXTERNAL COLOURS. OTHER FINISHES INCLUDE ANODISED IN SATIN OR BRONZE COLOURS WITH ENVA/EURAS-QUALIFIED QUALITY LABEL. POWDER-COATED WOODSTRUCTURE FINISHES ARE AVAILABLE ON REQUEST.

ALL DOORS ARE HUNG ON FACE FIX FLAG TYPE HINGES AND FITTED WITH MULTIPoint LOCKING MECHANISMS.

GLAZING CONFORMS TO THE REQUIREMENTS OF BS 6262 AND PART 1 OF THE BUILDING REGULATIONS FOR BOTH THICKNESS AND TYPE. WEATHERSEALS ARE EPDM SET IN UNDERCUT CHANNELS.

INTERNAL BEADS AND GASKETS TO ACCOMMODATE 28MM DOUBLE GLAZED UNITS WITH CENTRE PANE U-VALUE OF 1.2.

DOORS ARE MANUFACTURED ACCORDING TO CUSTOMER REQUIREMENTS FROM A RANGE OF STANDARD PROFILES AND ARE DESIGNED TO INCORPORATE A RANGE OF OPTIONS.

HEREFORE IT IS ADVISABLE TO CONTACT SMART SYSTEMS TECHNICAL DESIGN DEPARTMENT EARLY IN THE DESIGN PROCESS.

CONSULT SMART SYSTEMS LTD TECHNICAL LITERATURE FOR DETAILS. SMART SYSTEMS LTD CAN ALSO PROVIDE DESIGN AND SPECIFICATION GUIDANCE AND IT IS RECOMMENDED THAT THEY ARE CONSULTED EARLY IN THE DESIGN PROCESS.

MANUFACTURER: SMART SYSTEMS LTD, ANHOLDERS WAY, YATTON, NORTH SOMERSET BS10 6LN, TEL: 01934 876100, FAX: 01934 835169, EMAIL: SALES@SMARTSYSTEMS.CO.UK, WEB: WWW.SMARTSYSTEMS.CO.UK

PRODUCT REFERENCE: VISOLINE DOOR

MATERIALS: ALL PROFILES ARE EXTRUDED FROM ALUMINIUM ALLOY 6060/6063 T5/T6 AND COMPLY WITH THE RECOMMENDATIONS OF BS EN 12220-2:2001/BS 755-9:2001.

THERMAL BREAKS ARE FORMED WITH POLYAMIDE STRIPS PA 6.6 ZS REINFORCED WITH GLASS FIBRE SECTIONS CAPABLE OF WITHSTANDING TEMPERATURES UP TO 200°C FOR OVER PAINTING.

THERMAL TEST REQUIREMENTS AS LAID DOWN IN PART L BUILDING REGULATIONS

STRUCTURE: ALL STRUCTURAL PROFILES TO BE DESIGNED SO AS TO LIMIT DEFLECTION OF ANY GLASS EDGE INTO A FRAMING MEMBER UNDER WINDLOAD SHALL NOT EXCEED L/175 OF ITS SPAN WITH NO EVIDENCE OF ANY PERMANENT DEFORMATION ONCE THE LOAD HAS BEEN REMOVED. ALL HORIZONTAL FRAMING MEMBERS TO RESTRICT DEAD LOAD DEFLECTION TO L/400, UP TO A MAXIMUM OF 3MM CONSTRUCTION.

ALL DOORSETS SHALL BE MANUFACTURED, INSTALLED AND GLAZED IN STRICT ACCORDANCE WITH SMART SYSTEMS INSTRUCTIONS AND GUIDELINES AS SET DOWN IN THE APPROPRIATE TECHNICAL LITERATURE, DETAILS AND SPECIFICATIONS.

DEPTH OF CUTTER FRAME SECTIONS SHALL BE 51 MM INCORPORATING TWO 18.6MM POLYAMIDE THERMAL BREAK SECTIONS WITHIN THE PROFILES.

ALL OUTER FRAME AND DOOR MEMBERS TO BE 65° MITRED CORNER CONSTRUCTION, REINFORCED BY MEANS OF EXTRUDED ALUMINIUM CLEATS AND STAINLESS STEEL CORNER BRACES.

ALL CORNER JOINTS TO BE SECURED BY GLUING AND CRIPPING OR GLUING AND MECHANICAL CORNER CLEATS.

ALL MULLIONS AND TRANSOMS TO BE CUT/SHAPED AND SECURED USING STAINLESS STEEL SCREWS DRIVEN INTO INTEGRAL SCREW PORTS WITHIN THE SECTIONS OR CRUCIFORM CLEATS.

ALL JOINTS TO BE SEALED DURING CONSTRUCTION USING SUITABLE 'SMALL GAP' SEALANT.

IT IS RECOMMENDED THAT THE DOOR SYSTEM BE DRAINED AND VENTILATED IN ACCORDANCE WITH SMART SYSTEMS TECHNICAL MANUAL. DRIP BARS SHALL BE USED TO ALL DOORS.

FINISH AS DELIVERED:
INTERNAL COLOUR: BROWN OR BLACK.
EXTERNAL COLOUR: BROWN OR BLACK.

GLAZING DETAILS: 28MM SEALED UNITS

OUTER PANE 4MM PLANILUX CLEAR FLOAT

20MM BLACK SWISS V WARM EDGE SPACER

INNER PANE 4MM PLANITHERM TOTAL CLEAR FLOAT WITH SOFT LOW E COAT

90% ARGON FILL

TOUGHENED WHERE REQUIRED.

CENTRE PANE U VALUE OF 1.2 W/M²K

WINDOWS SHALL BE GLAZED INTERNALLY WITH SQUARE BEAD.

INTERNAL BEADS AND GASKETS TO ACCOMMODATE 28MM DOUBLE GLAZED UNITS WITH CENTRE PANE U-VALUE OF 1.2.

REVERSIBLE / ACCESSORIES:
FACE MOUNTED FLAG STYLE HINGES, THREE PER DOOR LEAF.

MULTIPoint LOCK ON HASTER DOOR WITH LEVER/LEVER HANDLES, FINGER BOLTS TO SLAVE DOOR.

OPENING OUT WITH LOW THRESHOLD.

PROFILES: DOOR:
VL10 OUTER FRAME
VL90 LOW THRESHOLD
VLE2 SASH

FINISH:
ALL FININGS TO BE IN STRICT ACCORDANCE WITH THE RELEVANT BRITISH STANDARDS, INCLUDING BS 6262, AND SHALL ENSURE THE DOOR FRAME IS RETAINED SECURELY WITHIN THE OPENING WITHOUT INCURRING ANY DAMAGE OR DISTURBANCE TO THE FRAME.

GENERALLY, FININGS TO BE POSITIONED 150MM FROM EACH CORNER AND EACH MULLION/TRANSOM AND AT CENTRES NOT EXCEEDING 600MM.

FINING LUGS/STRAPS ONLY TO BE USED WHERE THEY CAN BE SUITABLY CONCEALED TO APPROVAL.

ALL FINING OF DOOR FRAMES TO THE SUPPORTING STRUCTURE TO BE ACHIEVED USING A SUITABLE LUG AND/OR FRAME ANCHOR FIXING METHOD CAPABLE OF ACCOMMODATING ALL APPLICABLE LOADS, DEFLECTION, TOLERANCES AND EXPANSION EXPECTED ON SITE.

COPY

PLANNING



Apollo/Camden
15 Belsize Avenue
Belsize Park, London
Existing & Proposed Window
Details + Existing Photographs
Sheet 1 of 2
Drawn: AGJ

Scale: 1:20 & 1:5 © AO Date: 06/10/2011
B15 AS 17 Revision:

2012/4049/P