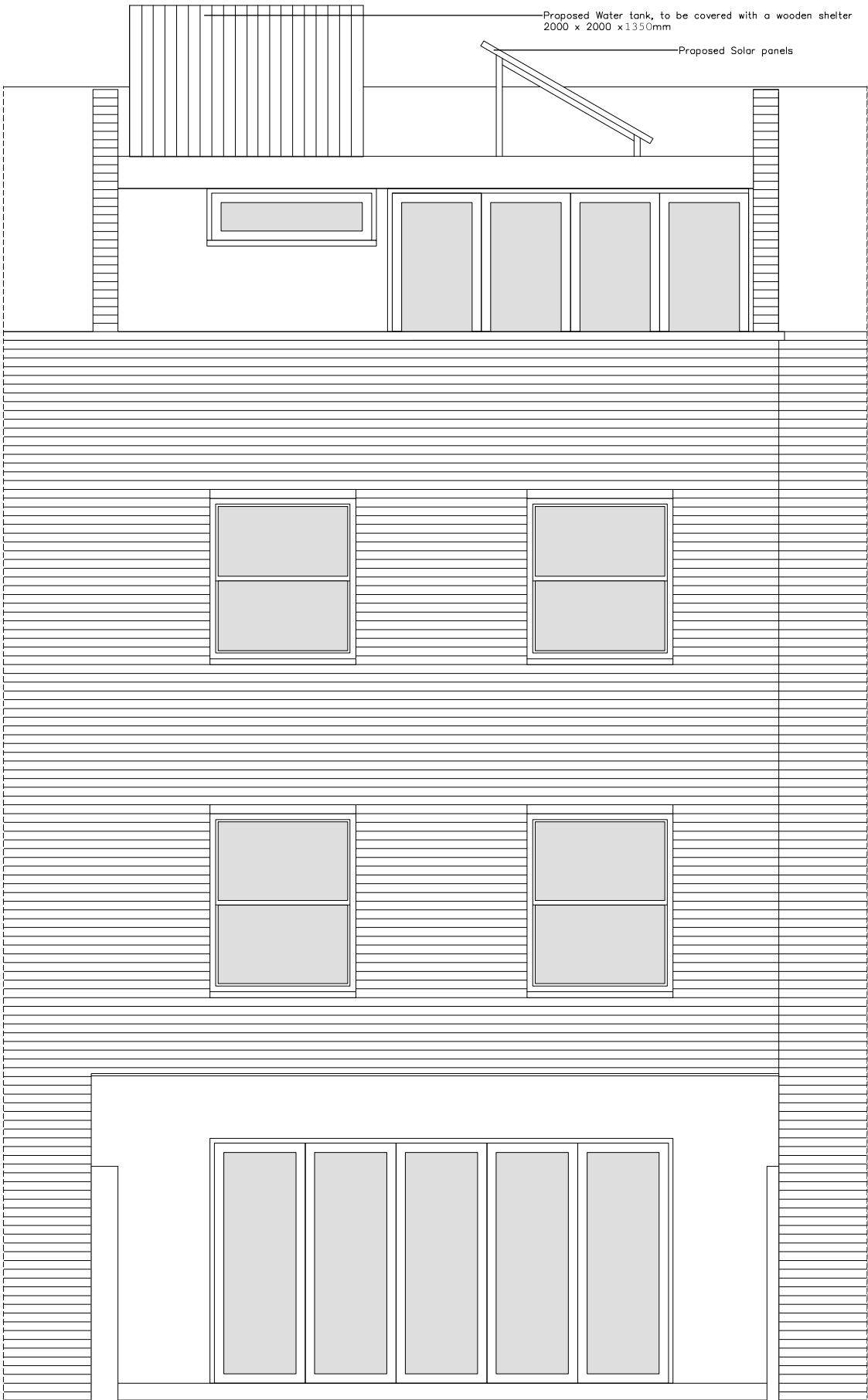


FRONT ELEVATION



REAR ELEVATION



REVISIONS A 07 Jul 08 Added basement and lightwell etc  
B 21 Oct 09 Removed basement and lightwell etc  
C 21 May 10 Altered door to old kitchen to only half opening  
D 08 Jun 11 Altered the fenestration on the terrace

1074.17d

16 CAMDEN SQUARE LONDON NW1

ELEVATIONS AS PROPOSED

f 020 7387 8483 f 020 7387 1704 scale 1: 25 @ A1 & 1:50 @ A3 30.8.2012