

57

59 SOUTH HILL PARK

61

PROPOSED ROOF EXTENSION WITH STANDING SEAM ZINC CLADDING METAL FRAMED WINDOWS EXISTING PARAPET WALL WITH NEW STONE COPING EXISTING HOPPER AND RWP

RAISE EXISTING PARAPET WALL TO SUIT EXISTING CHIMNEY BREAST

EXISTING PITCHED SLATE ROOF

STUDY

PLAYROOM

DINING ROOM

NEW TRADITIONAL PAINTED SW SLIDING SASH WINDOWS IN NEW OPENING. BOTTOM SASHES FIXED AND OBSCURED; TOP SASHES OPENABLE TO 1.8m ONLY WITH PART FIXED AND PART CLEAR GLASS

PATENT GLAZING WITH BLINDS TO ELIMINATE LIGHT SPILL STANDING SEAM ZINC CLAD ROOF WITH ZINC FLASHING TO SUIT EXISTING PARAPET WALL

SHED

RAISED BED BEHIND

NEW EXTERNAL WALLS IN RECLAIMED LONDON STOCK BRICKWORK TO MATCH EXISTING

57 SOUTH HILL PARK INTERIOR NOT SURVEYED

61 SOUTH HILL PARK INTERIOR NOT SURVEYED

DRY LINING TO EXISTING PARTY WALL

2400

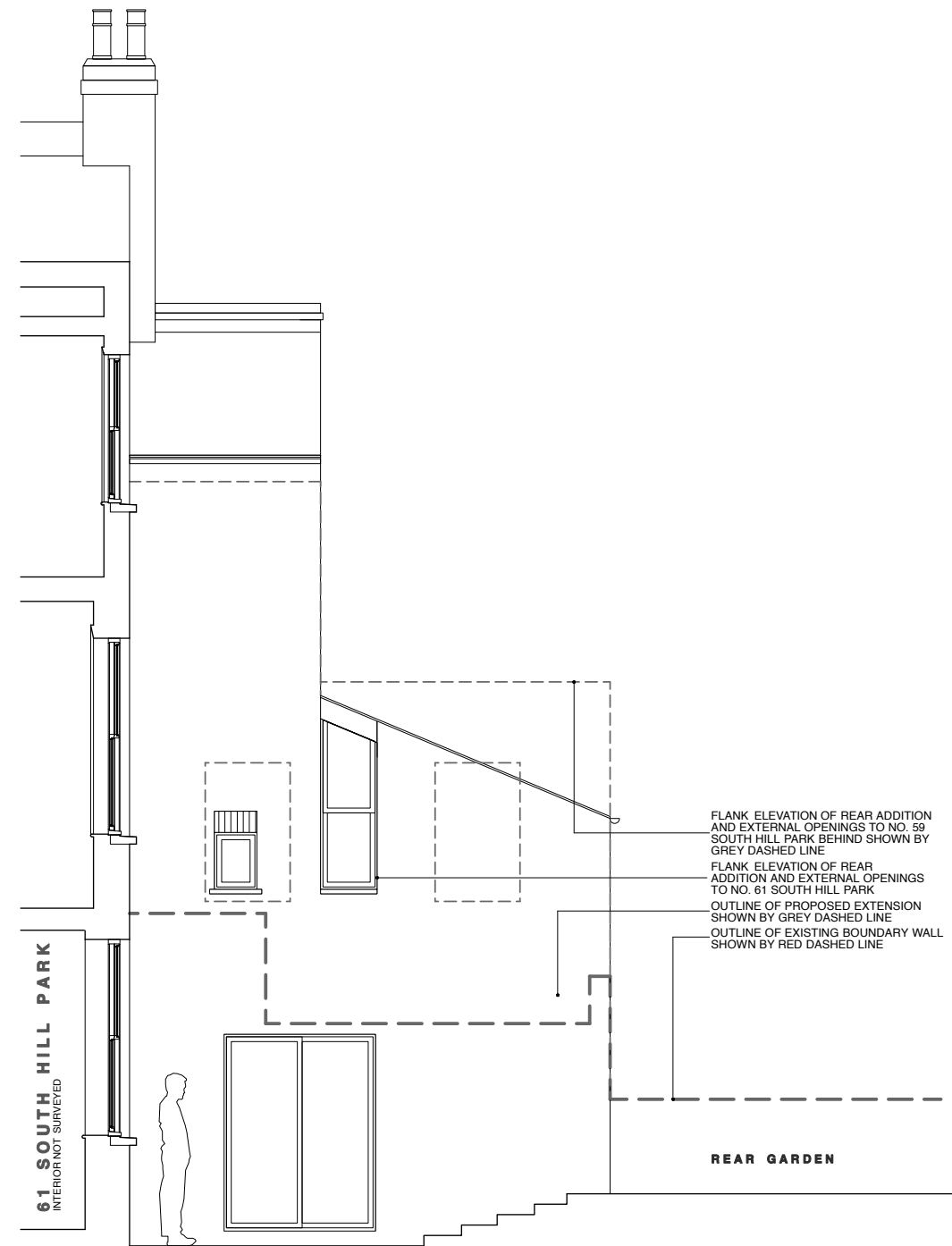
1600

37°

29°

21°

SECTION E-E



FLANK ELEVATION OF REAR ADDITION AND EXTERNAL OPENINGS TO NO. 59 SOUTH HILL PARK BEHIND SHOWN BY GREY DASHED LINE
FLANK ELEVATION OF REAR ADDITION AND EXTERNAL OPENINGS TO NO. 61 SOUTH HILL PARK
OUTLINE OF PROPOSED EXTENSION SHOWN BY GREY DASHED LINE
OUTLINE OF EXISTING BOUNDARY WALL SHOWN BY RED DASHED LINE

61 SOUTH HILL PARK INTERIOR NOT SURVEYED

REAR GARDEN

SECTION D-D

59 SOUTH HILL PARK LONDON NW3

REVISIONS/ISSUE	DATE	ISSUE TO
27/07/12	28/08/12	ISSUE TO PLANNING FOR APPROVAL
30/07/12	30/08/12	ISSUE TO PLANNING FOR APPROVAL
30/07/12	30/08/12	ISSUE TO PLANNING FOR APPROVAL

PLEASE USE SCALE BAR TO TAKE MEASUREMENTS WHEN READING FROM PDFS