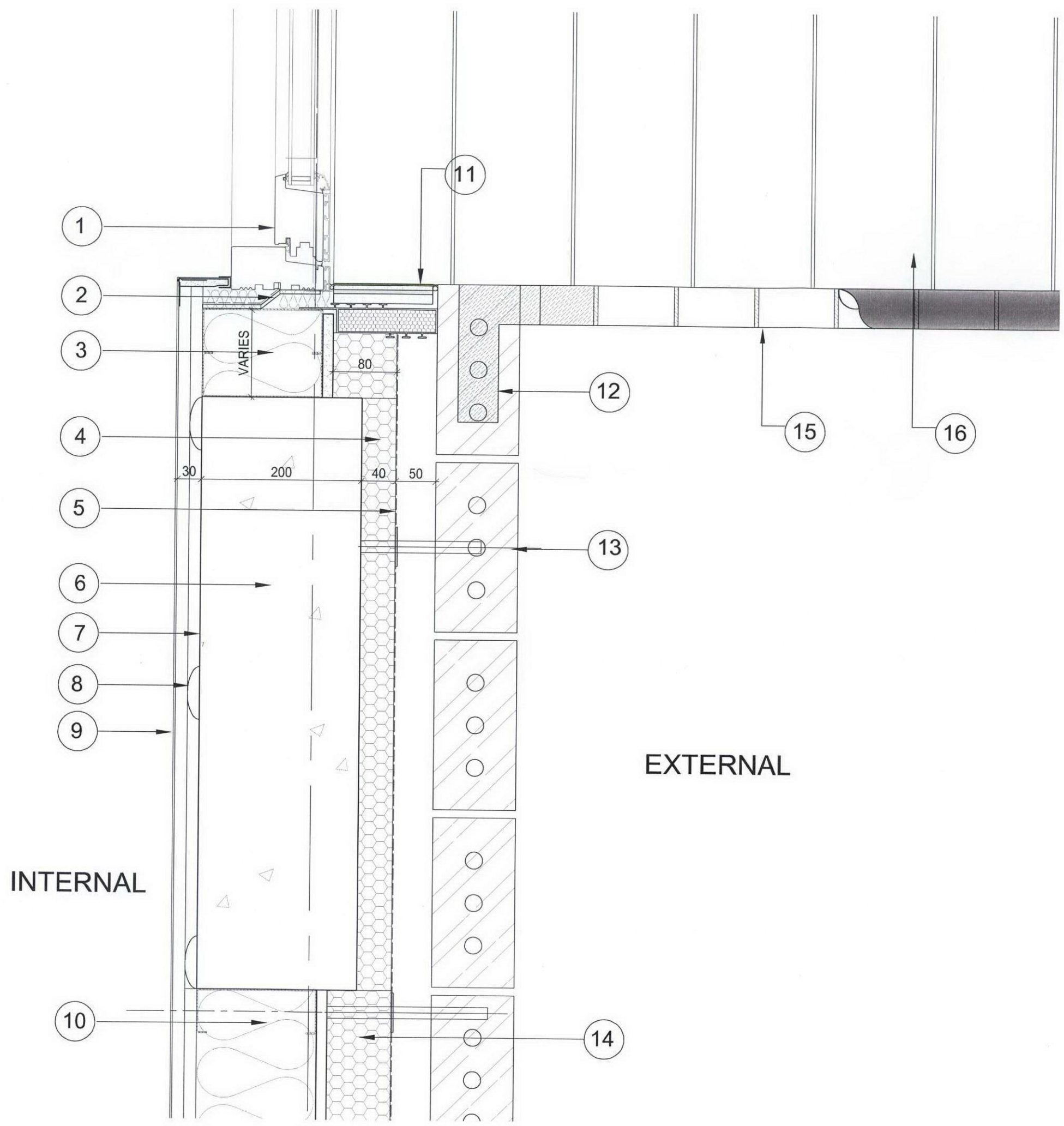


DO NOT SCALE DIMENSIONS OFF THIS DRAWING
 CHECK ALL DIMENSIONS ON SITE BEFORE FABRICATION
 REPORT ALL ERRORS OR OMISSIONS TO SPRUNT LIMITED
 THIS DRAWING IS PROTECTED UNDER COPYRIGHT AND
 SHALL NOT BE REPRODUCED IN PART OR WHOLE WITHOUT
 PRIOR EXPRESSED PERMISSION OF SPRUNT LIMITED



- ① RATIONEL ALDUS OR SIMILAR APPROVED COMPOSITE BALCONY DOOR
- ② THERMALLY BROKEN SS ANGLE FIXED TO RC UPSTAND
- ③ METSEC FRAMING CHANNEL FIXED TO RC SLAB TO ALLOW FOR 20MM DEFLECTION IN CONCRETE SLAB
- ④ 40 MM RIGID INSULATION BOARD
- ⑤ BREATHER MEMBRANE
- ⑥ 200MM R.C. COLUMN
- ⑦ VAPOR LAYER
- ⑧ DABS
- ⑨ 15MM PLASTERBOARD FINISHED WITH 2MM SKIMCOAT
- ⑩ 150MM METSEC FRAMING WITH MINERAL WOOL INSULATION INFILL AND 2X15 MM PLASTERBOARD
- ⑪ CAVITY CLOSER
- ⑫ GALV. M.S."L" SHAPE METAL STRAP TO SUPPORT BALUSTRADE
- ⑬ S.S BRICK TIE
- ⑭ 80 MM CELOTEX INSULATION FIXED TO CEMENT BOARD AND 50 MM CAVITY
- ⑮ P.P.C. FINISHED BALUSTRADE
- ⑯ TERRAFINA COMPOSITE DECKING SYSTEM BY RAAFT

T1	LV	17.05.12	MB	TENDER ISSUE
REV BY	DATE	CHK	DESCRIPTION	
STATUS				
FOR TENDER				
CONTRACTOR				
PROJECT				
TWYMAN HOUSE				
CLIENT				
TAYLOR WIMPEY CENTRAL LONDON				
DRAWING TITLE				
STEEL FRAMED BOLT-ON BALCONIES JAMB DETAIL-PLAN				
DATE CREATED	DATE AMENDED	SCALE		
16.05.12	16.05.12	1:5@A3		
DRAWN BY	AMENDED BY	CHECKED		
LV	MBAGDE	MB		
DRAWING NO & REVISION				
12387_40_13 -T1				

The Quadrangle,
 180 Wardour Street,
 London W1F 8PY
 T +44 (0)20 7287 1153
 F +44 (0)20 7287 3675
 www.sprunt.net

