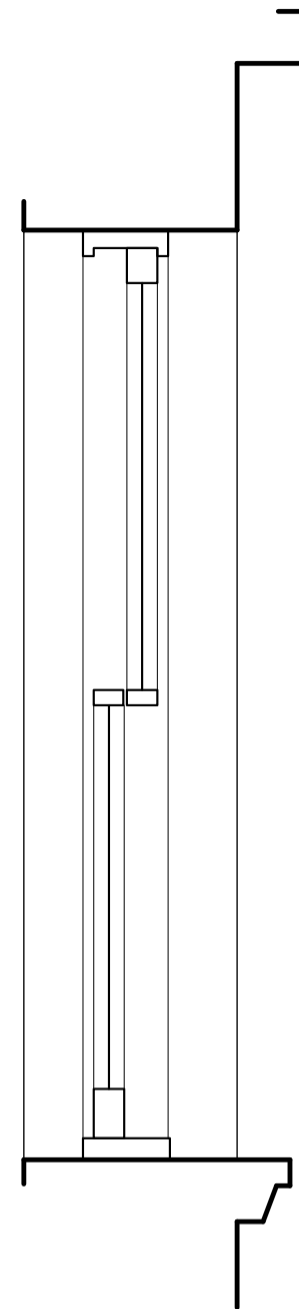
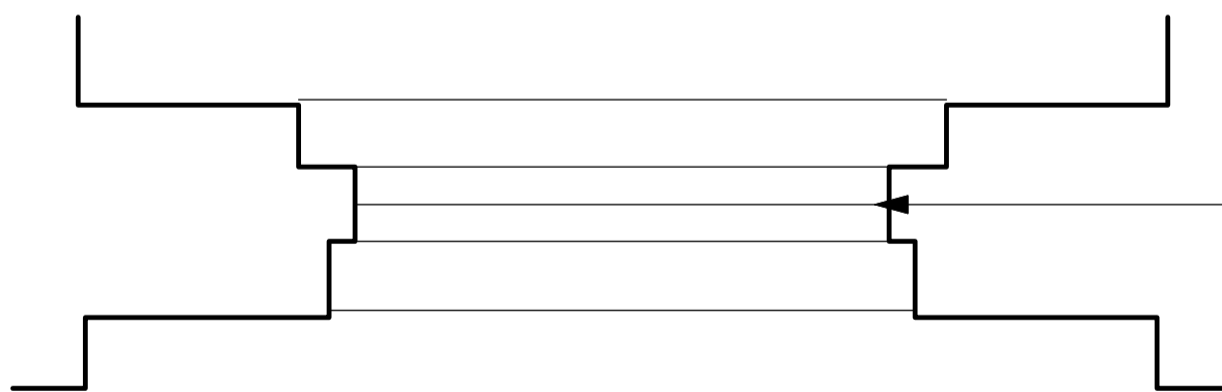


ELEVATION



SECTION



Window to replicate adjacent window on south elevation

PLAN

Revision	Date	Description
----------	------	-------------

Alan Higgs Architects

77 Ashmill Street London NW1 6RA

Alan Higgs Architects Limited

Telephone 020 7723 0075 Facsimile 020 7724 4290

E-mail mail@alanhiggsarchitects.com

**15 PRINCE
ALBERT ROAD**

**West Window - Detailed
Drawings - Second Floor**

Scale 1:20@A4 Date 08/12 Drawn GM

Job No.

**260
PD228**