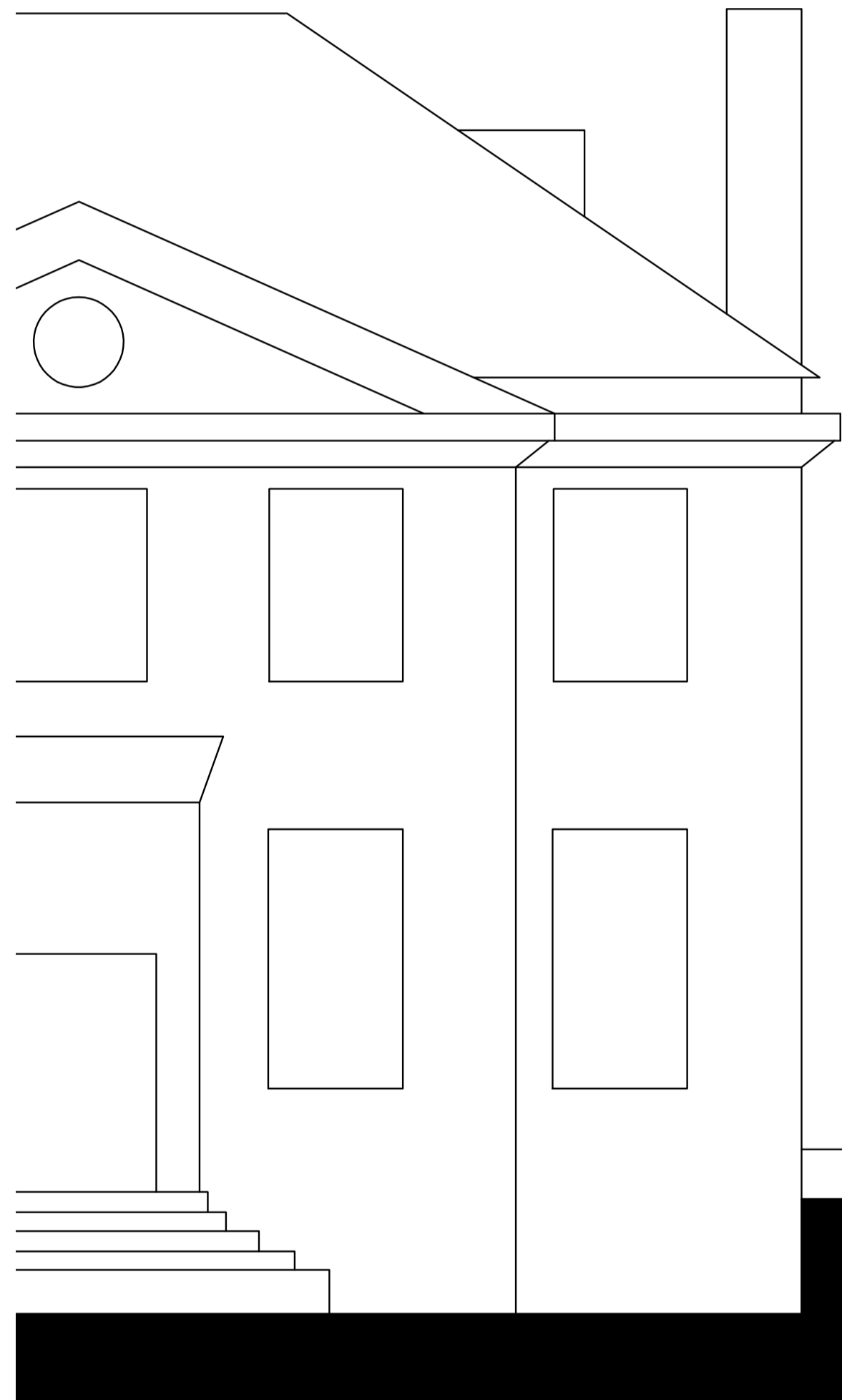
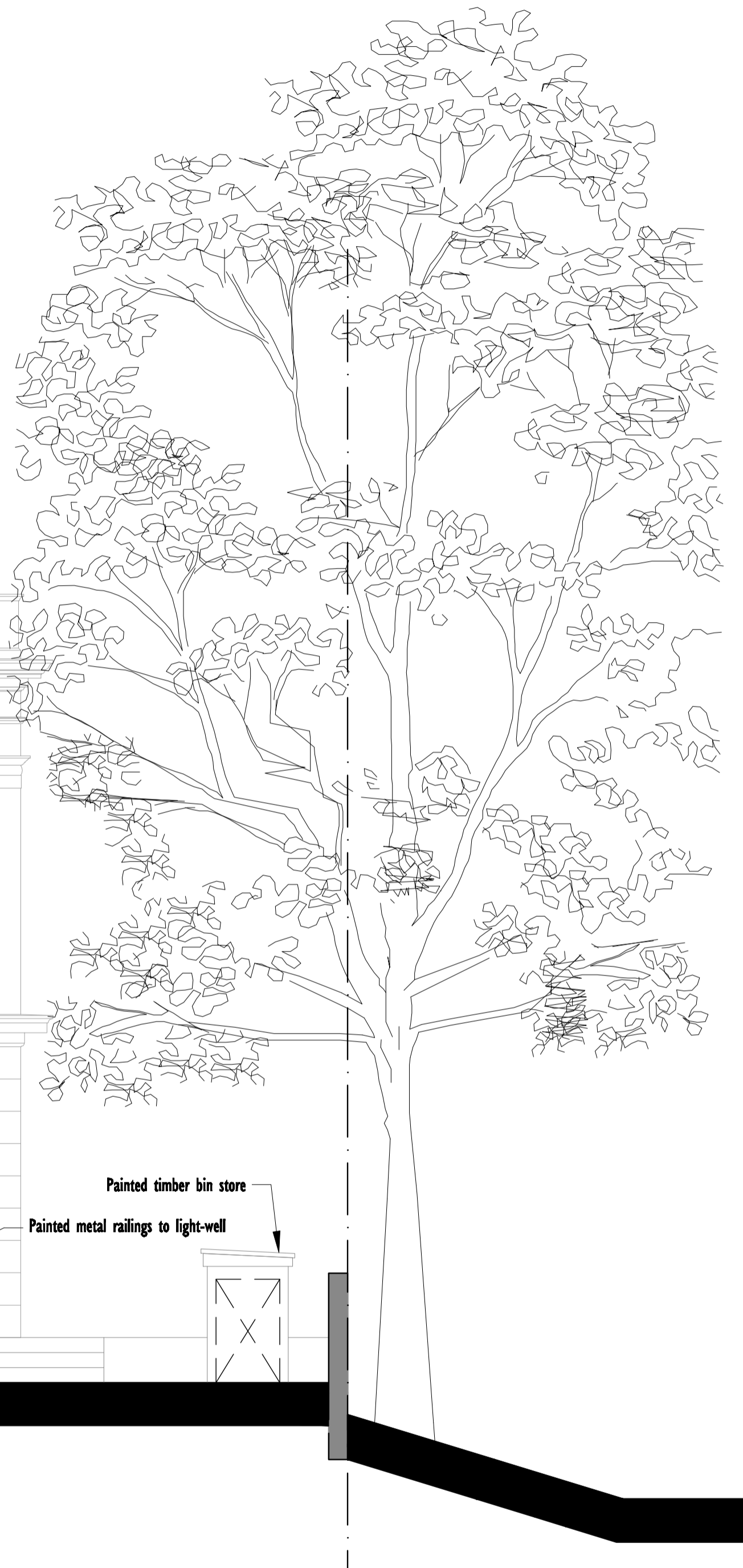


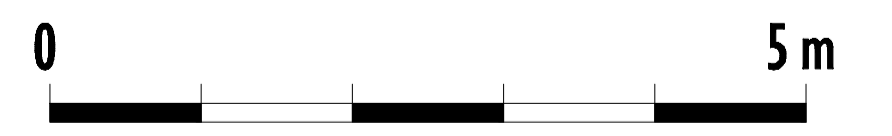
Light-well elevation



- Welsh heather slate roof
- Lead covered dormer window with painted timber fascias
- Painted balustrade and rendered cornice band to parapet
- +56.000
- Painted render facade and detailing throughout
- Painted render quoins
- Painted timber french doors
- Wrought iron decorative railings
- Painted timber sash windows
- +51.200



- Painted timber bin store
- Painted metal railings to light-well



PROPOSED ELEVATIONS: I

Scale 1:50 @ A1  
Scale 1:100 @ A3

**w o l f f**  
ARCHITECTS

16 lambton place  
notting hill  
london w11 2sh  
t +44 20 7 229 3125  
f +44 20 7 229 3257  
info@wolffarchitects.co.uk

This drawing is prepared under copyright and all other rights reserved. It is the property of Wolff Architects. Any reproduction or use of this drawing without the written consent of Wolff Architects is prohibited. It is supplied without liability for any errors or omissions.

REV	DATE	DESCRIPTION
0	24.07.12	FIRST ISSUE

REV	DATE	DESCRIPTION

PROJECT	PLANNING STAGE	56 Avenue Road London, NW8 6HT	Drawing title:	Proposed Elevations: I
	DATE	24.07.12		PROJECT NO.
SCALE	1:50/1:100	REV	0	