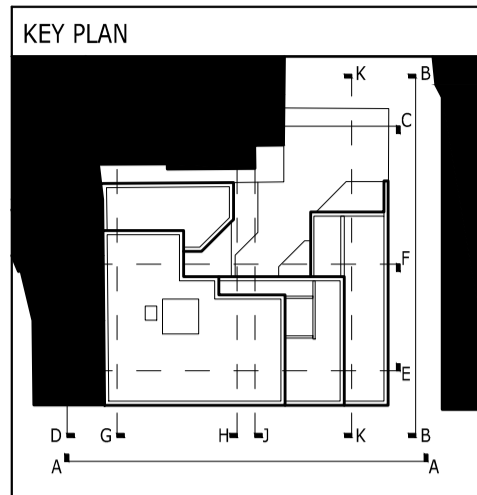


THIS DRAWING AND CAD DATA THEREIN IS PROTECTED BY COPYRIGHT AND MUST NOT BE COPIED OR REPRODUCED WITHOUT THE WRITTEN CONSENT OF THE ARCHITECT

NO DIMENSIONS ARE TO BE SCALED FROM THIS DRAWING. USE FIGURED DIMENSIONS ONLY. ALL DIMENSIONS AND SIZES ARE TO BE CHECKED ON SITE AND ANY DISCREPANCIES REPORTED TO THE ARCHITECT PRIOR TO INITIATION OF ANY WORKS.

0 1 3 5m

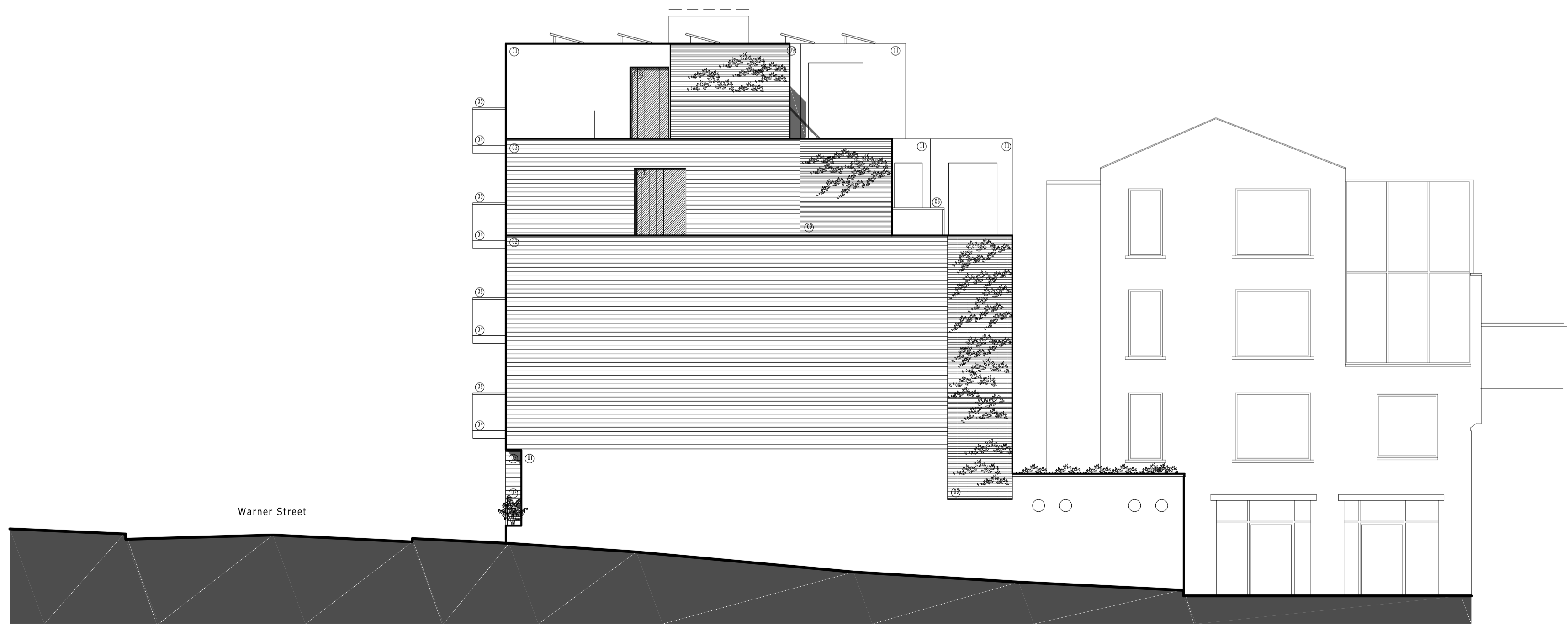
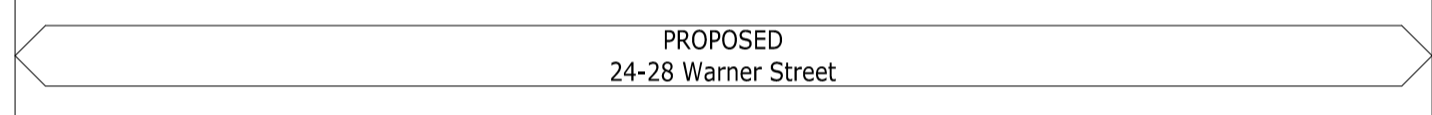


LIST OF MATERIALS

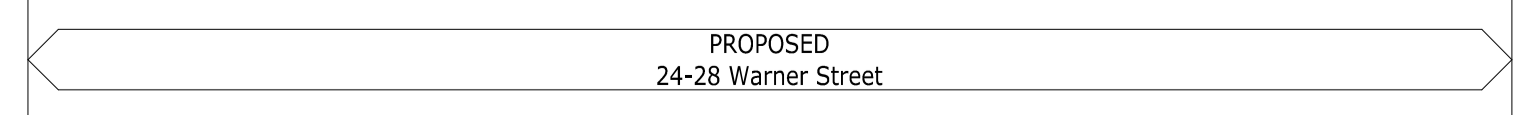
01. Site Re-claimed Brickwork.
02. Western Red Cedar, weatherboard cladding.
03. P.C. Aluminium Cladding System.
04. Structurally reinforced Concrete Balcony with soffits and fascias clad in Aluminium.
05. Glass panel balustrade with stainless steel handrails.
06. P.C. Aluminium cladding panel.
07. Stainless steel flat metal plate balustrade.
08. Structural glass entrance screen and doors with Stainless steel patch fittings.
09. Western Red Cedar, Screen (hit & miss clad both sides).
10. Glass block (pink) (textured distorted view).
11. Render (off white).
12. P.C. Aluminium louvers.
13. Timber Deck supported by frame structure painted white.
14. P.C. Aluminium Raising.



ELEVATION A



ELEVATION B



D	Planning Amendments	D.H.	31-08-12
P	Planning Amendments	D.H.	08-08-12
B	Incorporating Planning advice		
A	1.12 changed to be self-contained	Y.W.	25-07-11
	1.13 added to main entrance	Y.W.	04-05-11
	PI panels shown		
ISS	approved		

Job Name:  
24-28 Warner Street  
London  
EC1R 5EX

Drawing Title:  
Elevations A & B  
Proposed

Status:  
Planning Application

Date: Feb 2011 A.R. Sheet By: Scale @ Size: 1:100@A1

Job Number: 3001 Code: (P) Drawing Number: 030 Rev: D

ARC Design Partnership LLP  
601 International House  
223 Regent Street  
London W1B 2QD

t +44 (0)20 8890 3213  
studio@arcdesignllp.com