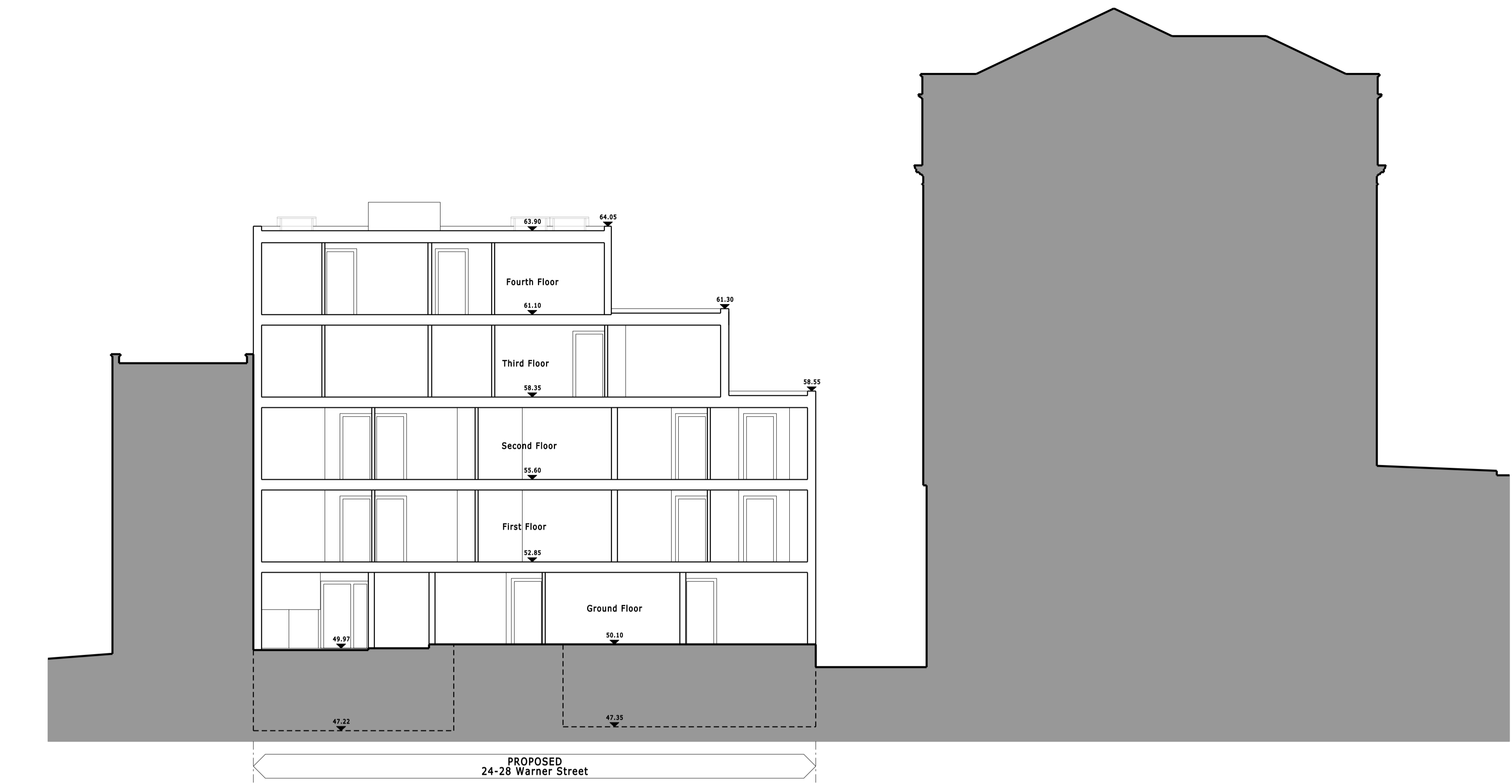
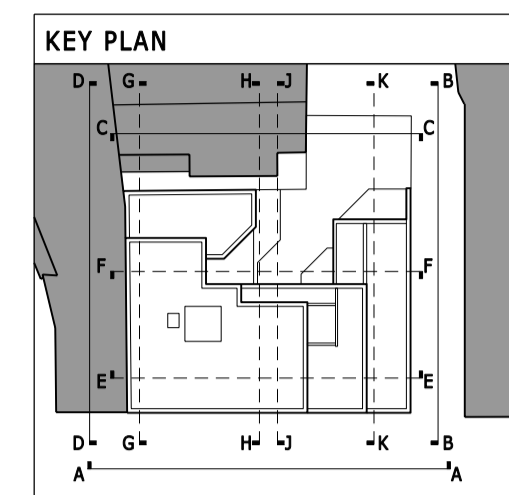


THIS DRAWING AND CAD DATA THEREIN IS PROTECTED BY COPYRIGHT AND MUST NOT BE COPIED OR REPRODUCED WITHOUT THE WRITTEN CONSENT OF DLG ARCHITECTS

NO DIMENSIONS ARE TO BE SCALED FROM THIS DRAWING. USE FIGURED DIMENSIONS ONLY. ALL DIMENSIONS AND SIZES ARE TO BE CHECKED ON SITE AND ANY DISCREPANCIES REPORTED TO THE ARCHITECT PRIOR TO INITIATION OF ANY WORKS.



SECTION E-E

- LIST OF MATERIALS**
01. Site Re-claimed Brickwork.
 02. Western Red Cedar weatherboard cladding.
 03. P.C. Aluminium Glazing System.
 04. Structurally cantilevered Concrete Balcony with soffit and fascia clad in Aluminium.
 05. Glass panel balustrade with stainless steel handrails.
 06. P.C. Aluminium cladding panel.
 07. Stainless steel flat metal plate balustrade.
 08. Structural glass entrance screen and doors with Stainless steel patch fittings.
 09. Western Red Cedar, Screen (hit & miss clad both sides).
 10. Glass block/plank (textured distorted view).
 11. Render (off white).
 13. P.C. Aluminium louvers.
 14. Timber Deck supported by frame structure painted white.



SECTION F-F

REV	DESCRIPTION	INITIALS/ DATE
A	PI panels shown	TW 04/05/11

24-28 Warner Street
London
EC1R 5EX

Drawing Title
Section E-E & F-F
Proposed

Status
Planning Application

Date: Feb 2011 AR Sheet By: AR Scale @ Size: 1:100@A1

Job Number: 3621 Code: (P) Drawing Number: 032 Rev: A

DLG Architects LLP
 11-29 Fashion Street
 London E1 6PZ

t +44(0)20 7426 3630
 f +44(0)20 7426 3631
 london@dlgarchitects.com
 dlgarchitects.com

