
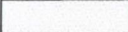
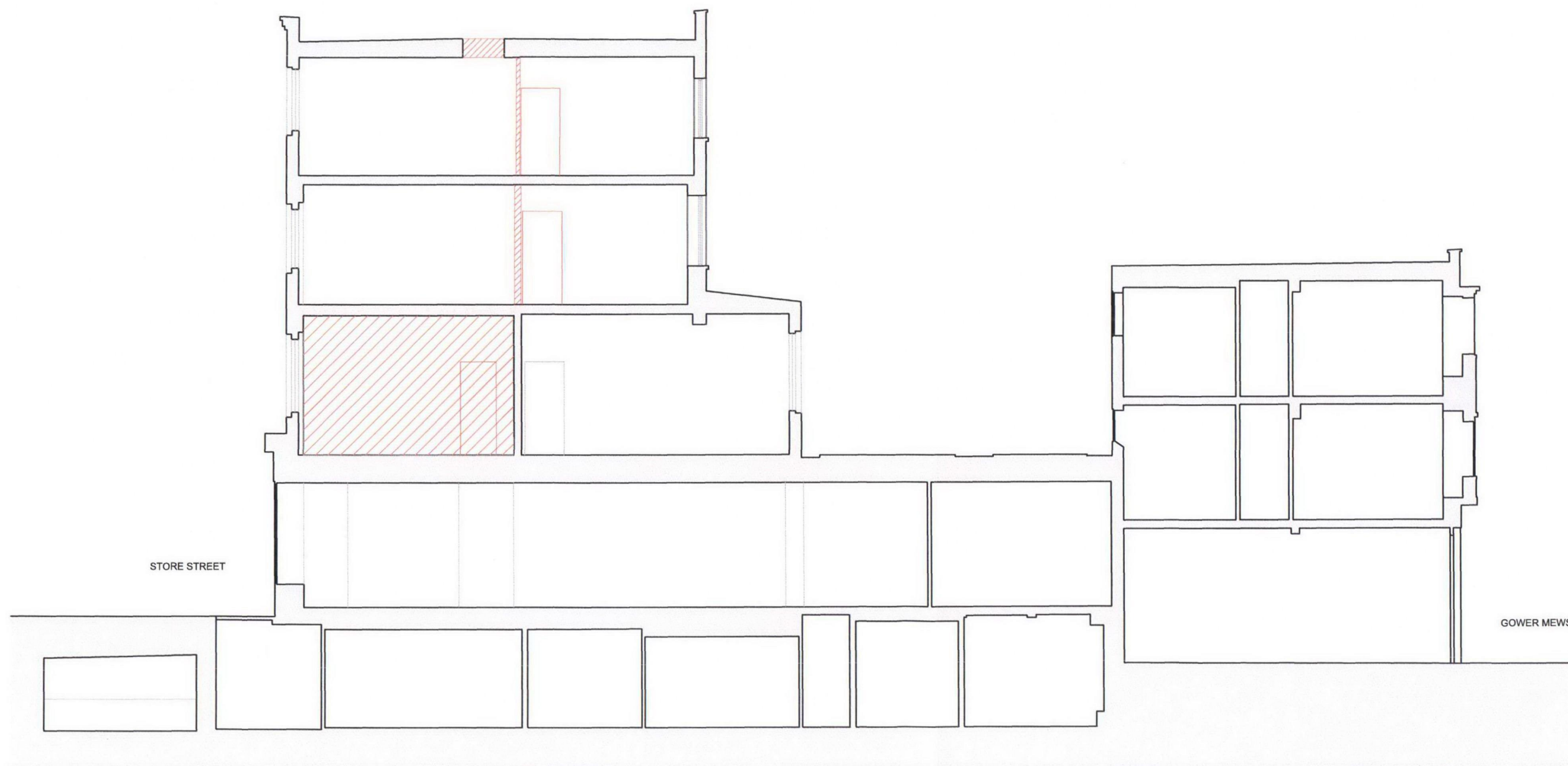




THE BEDFORD ESTATES

 DEMOLITIONS
 EXISTING



STORE STREET

GOWER MEWS

A	30/08/2012	For Planning
REV	ISSUE DATE	REVISION NOTES

GENERAL NOTES

Do not scale. All written dimensions must be checked on site before work commences on site or in shop. Figured dimensions take preference over those scaled. Discrepancies, where identified, must be reported to the Architect immediately.

Any areas indicated on this drawing are for guidance purposes only. No responsibility is taken for their accuracy.

All work must be carried out in accordance with the Building Regulations and to the satisfaction of the Local Authority.

STATUS

PLANNING

Garnett+Partners LLP
 Holborn Hall
 195 High Holborn
 London WC1V 7BD
 Tel. +44 (0)20 7404 7677
 Fax. +44 (0)20 7404 6648
 mail@garnettpartners.com
 www.garnettpartners.com

architects / planners / designers



CLIENT

The Bedford Estate

PROJECT

38 Store Street
London WC1

DRAWING TITLE

Section A-A
As Existing With Demolitions

SCALE	DATE
1:50 @ A1:100 @ A3	August '12

JOB NO.	DWG NO.	REV.
765	(01)300	A

01
 SECTION A-A
 As Existing

SCALE 0 1 2 4 6 10M