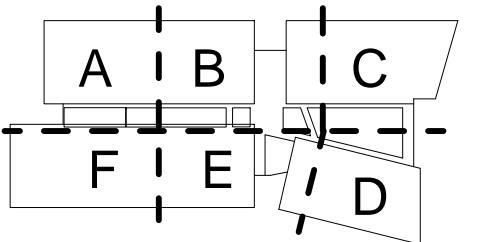




COMMERCIAL IN CONFIDENCE  
Prepared For  
**UKCMRI Construction Ltd.**

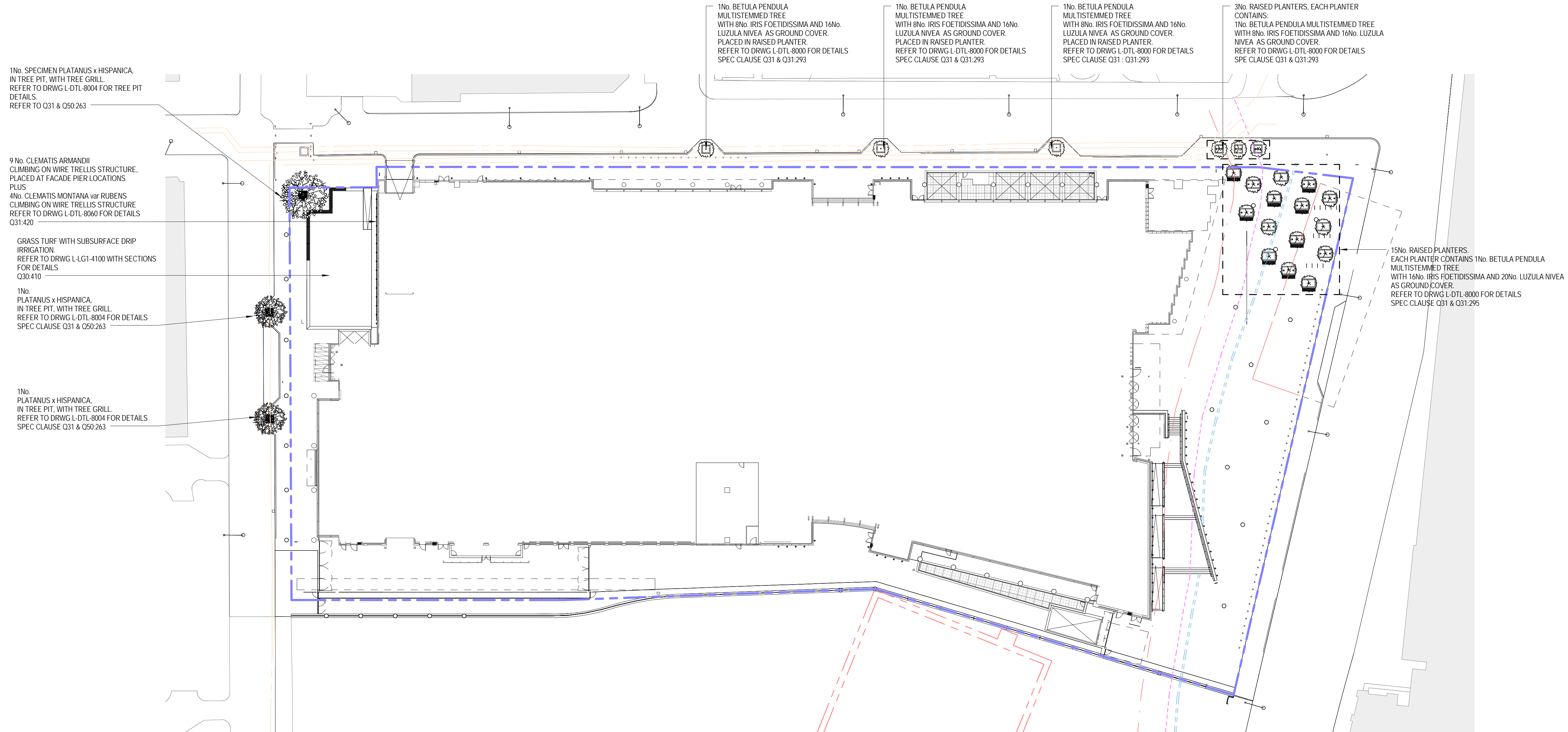
Project No: 08.33082.00

Key Plan



Do not scale dimensions from drawings  
Site verify all dimensions prior to construction  
Report all discrepancies to Architect immediately  
This drawing is to be read in conjunction with all relevant documents and drawings

Rev.	Description	Date	By
00	ISSUED FOR STAGE D	28.01.11	LA
01	ISSUED FOR PRE TENDER	26.08.11	GH
02	ISSUE FOR TENDER	27.09.11	GH
03	FROZEN GA'S	31.01.12	GH



TREES	SIZE OF TREE/SHRUB	SPACING	NOTES	ROOTBALL DIAMETER	QTY
PLATANUS x HISPANICA (SPECIMAN)	35-40 cm GIRTH	AS SHOWN	CLEAR STEM TO 2.4m SEMI MATURE TREE HEIGHT AT PLANTING ABOUT 15m	ROOTBALL 100cm WIDE x 80cm DEEP	1No.
PLATANUS x HISPANICA	25 cm GIRTH	AS SHOWN	CLEAR STEM TO 2.4m SEMI MATURE TREE HEIGHT AT PLANTING ABOUT 12m	ROOTBALL 90cm WIDE x 75cm DEEP	2No.
BETULA PENDULA	3 to 4m HEIGHT	AS SHOWN	MULTI STEM, WITH 2 TO 3 STRONG BREAKS	ROOTBALL 80cm DIAM. x 50cm DEEP	21 No.
PERENNIALS					
LUZULA NIVEA	45cm SPREAD	45 cm c/c	20No. PER 2.5m x 1.5m PLANTER 16No. PER 1.5m x 1.5m PLANTER	2 LITRE POT	396 TOTAL
IRIS FOETIDISSMA	45cm SPREAD	45 cm c/c	16No. PER 2.5m x 1.5m PLANTER 8No. PER 1.5m x 1.5m PLANTER	2 LITRE POT	288 TOTAL
CLIMBERS					
CLEMATIS ARMANDII		AT FACADE PIER	CANE TIED TO TRELLIS VERTICAL WIRE. REFER TO L-DTL-8060 FOR PLANT LOCATIONS	3 LITRE POT WITH 1.5M CANE	9 No.
CLEMATIS MONTANA var RUBENS		EVERY ALTERNATE FACADE PIER	CANE TIED TO TRELLIS VERTICAL WIRE. REFER TO L-DTL-8060 FOR PLANT LOCATIONS	3 LITRE POT WITH 1.5M CANE	4 No.
TURF					
HIGH QUALITY TURF			NO PERENNIAL RYEGRASS		240 m2

- NOTES:
- FOR IRRIGATION TO PLANTERS REFER TO L-DTL-8000 AND L-DTL-8030 FOR PLANTER DETAILS
  - FOR IRRIGATION TO CLIMBERS AND TURF REFER TO L-LG1-4100 WITH SECTIONS AND L-DTL-8052
  - FOR BROWN ROOF PLANTING REFER TO L-DTL-8010

Drawn by: GH Reviewed by: AD  
Drawn Date: 25.07.11 Scale @ A1: 1 : 400

Project No: 08.33082.00

Sheet Title:

**Landscape Planting Plan**

Sheet Number: Revision:

**L-LG1-2003 03**