

**The Francis Crick Institute
Planning Condition 3 Submission Material
August 2012**



Condition 3A – Physical Mock-ups

- Mock-up 1: Type 1A,1C & 2B – Photographs and film
- Mock-up 2: Type 4A– Photographs and film
- Mock-up 3: Type 4B&2A – Photographs and film
- Mock-up 4: Type 5A – Photographs
- Mock-up 5: Type 7A – Photographs
- Mock-up 6: Type 7B – Photographs
- Mock-up 7: Type 7D – Photographs

Please log onto:

<http://www.youtube.com/watch?v=LHSOIzvTRrE&feature=plcp>

**To view the 17 minute film of the 3 main façade cladding mock-ups prepared in Middleburg, Holland.
The film covers the following cladding types**

Mock-up 1

Type 1A – Main curtain wall

Type 1C – Curtain wall return

Type 2B – Terracotta wall with punched window

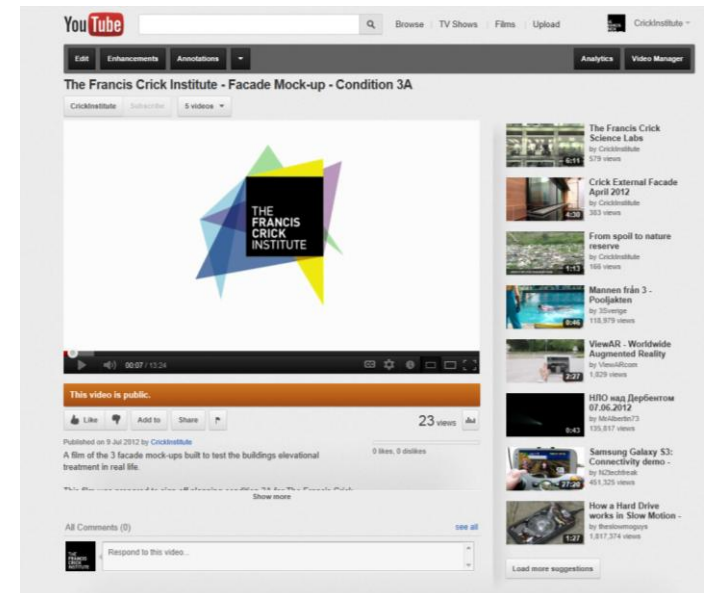
Mock-up 2

Type 4A – Main east atrium wall

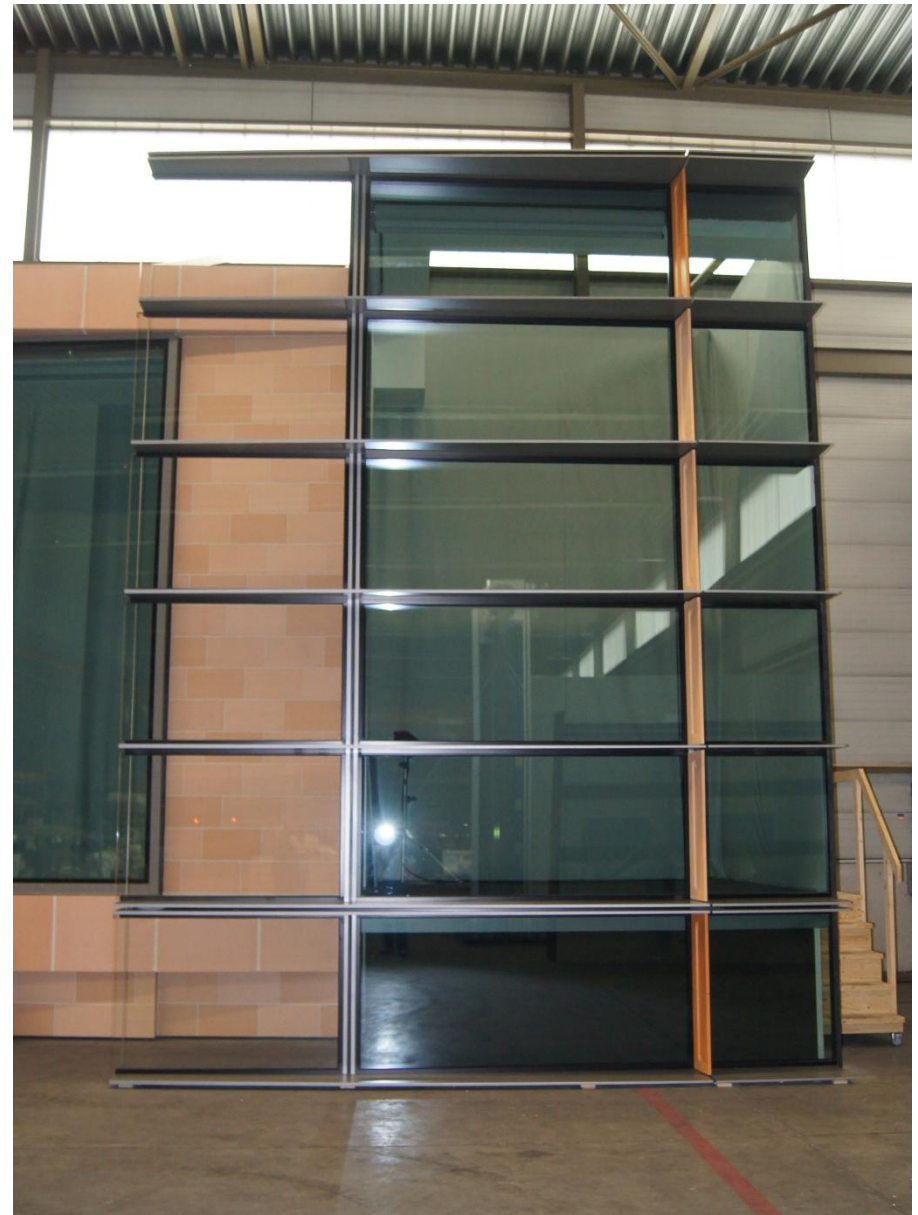
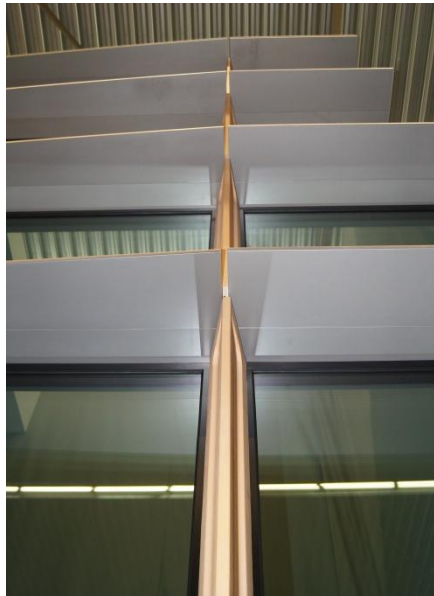
Mock-up 3

Type 4B – South Atrium wall

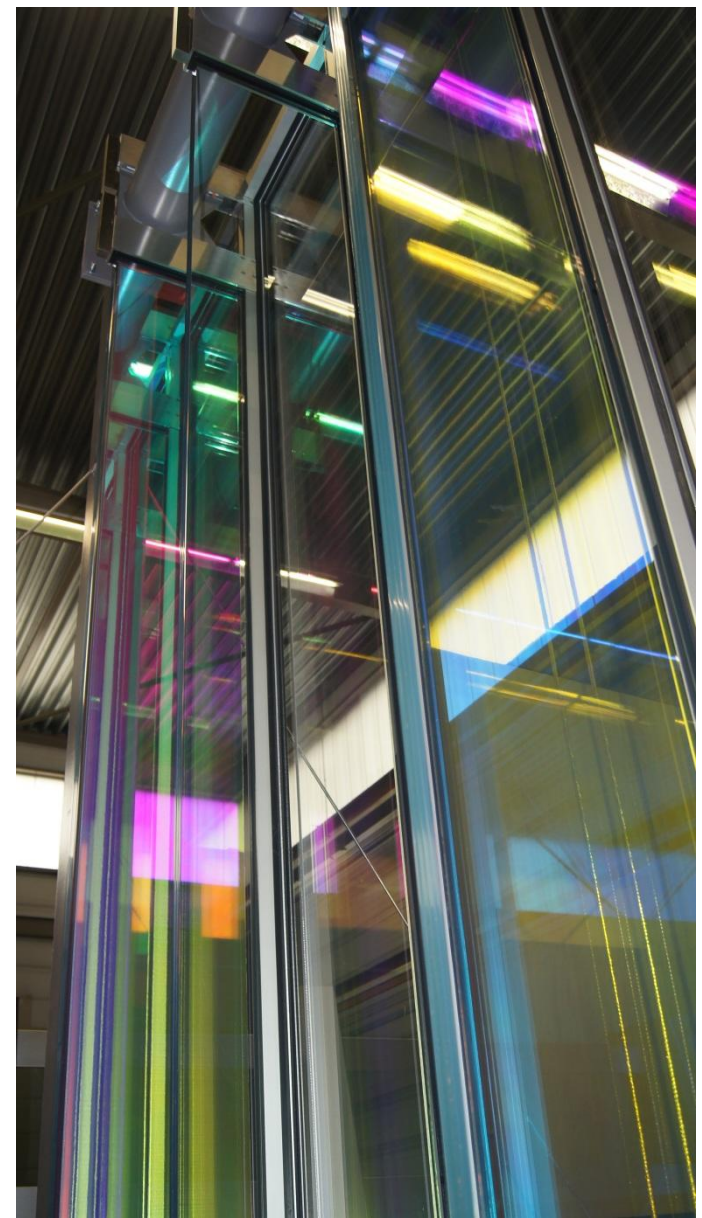
Type 2A – Terracotta wall



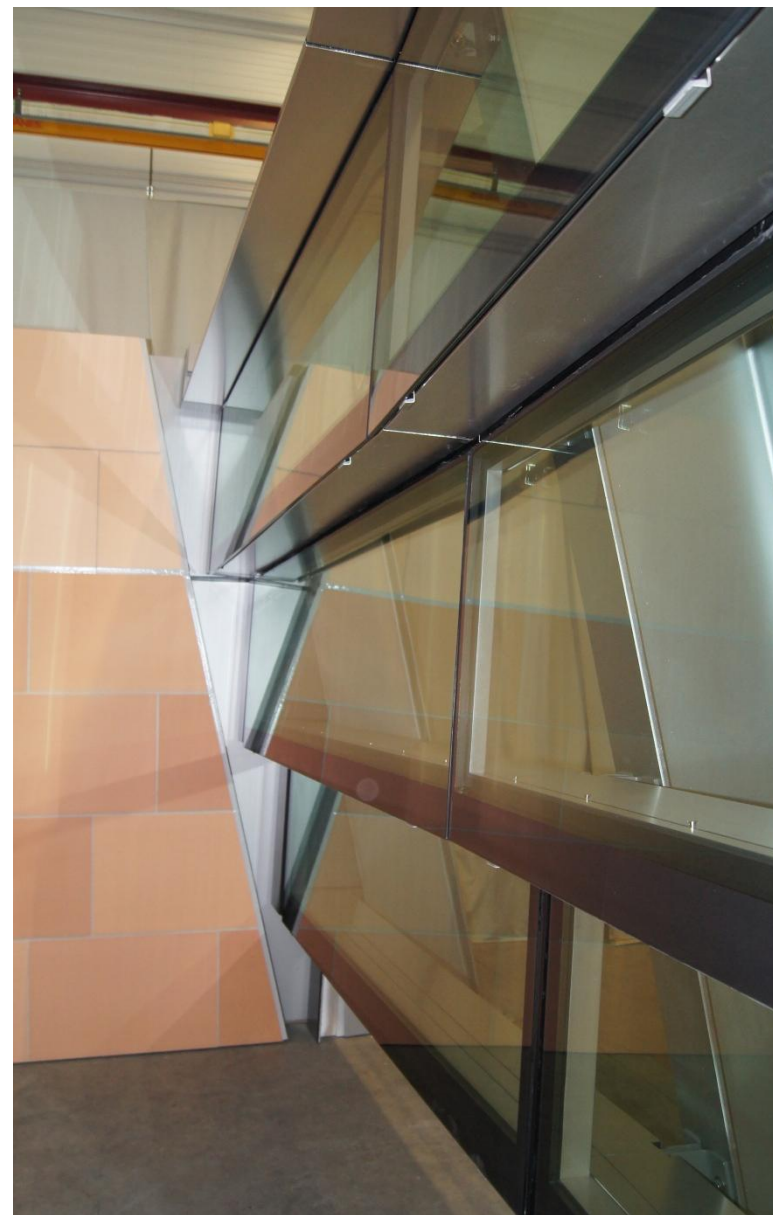
Condition 3A – Mock up 1



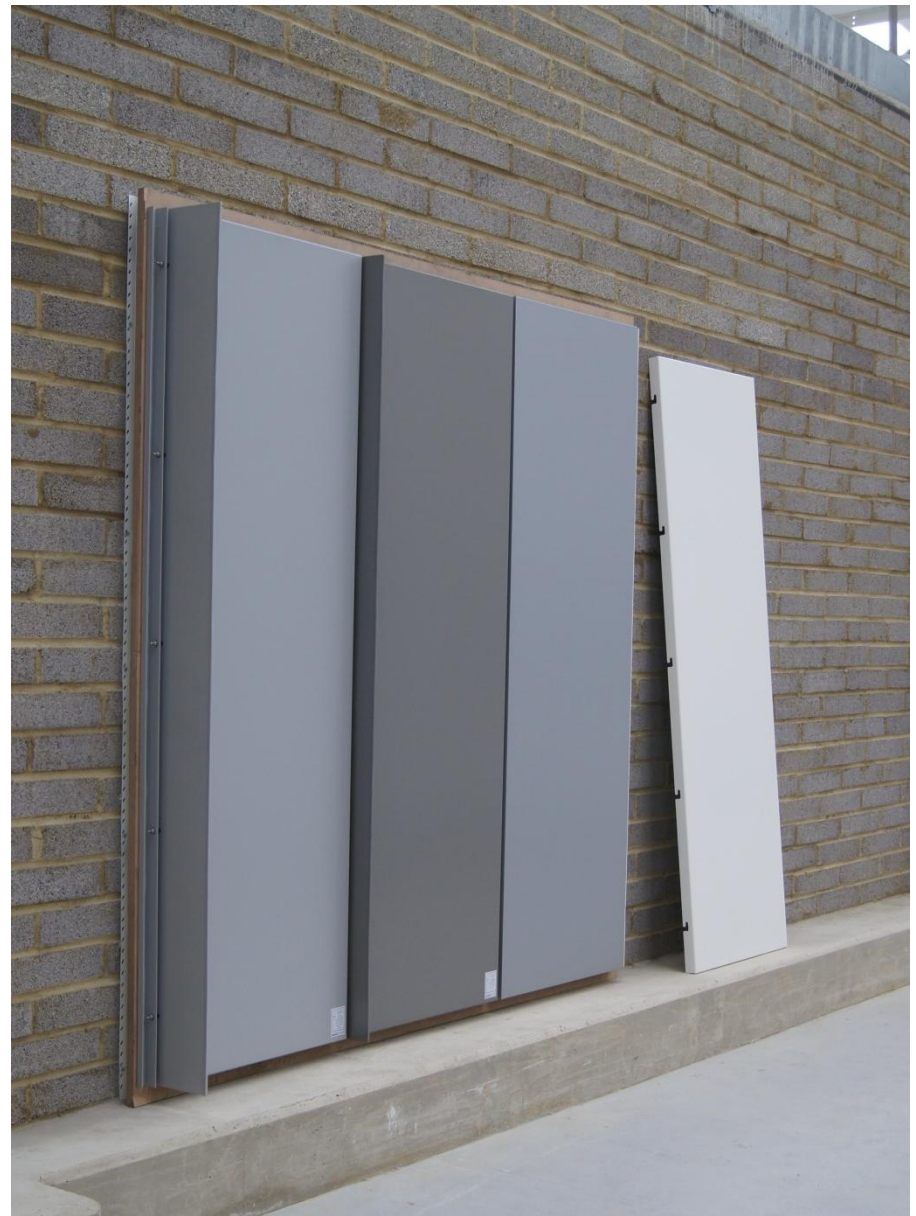
Condition 3A – Mock up 2



Condition 3A – Mock up 3



Condition 3A – Mock-up 4





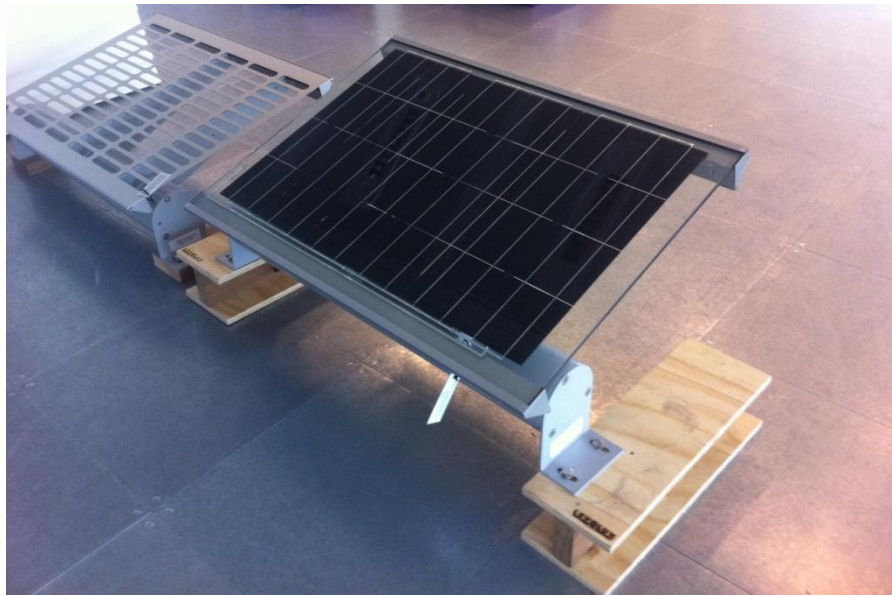


Condition 3A – Mock-up 5





Condition 3A – Mock-up 6



Condition 3A – Mock-up 7



Condition 3D – Material Sample Boards





BOARD 03 - East & West Glazed Atrium Walls



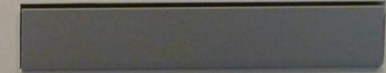
02-A - Natural Anodized Aluminum Sheet
EWG 4a and other areas



03-B - Blue Green Dichroic Film laminated into low iron glass
EWG 1a



03-C - Yellow Red Dichroic Film laminated into low iron glass
EWG 4a



03-D - Natural Anodized Aluminum Extrusion
EWG 4a and other areas



03-E - Bronze Anodized Glass laminated with thin aluminum mesh
Bronze fabric behind EWG 4a



03-F - Glass laminated with thin aluminum mesh
Glass 4a - EWG 4a, 4b, 4c

BOARD 04 - Curved Louvered Roof



04-A - Single Laminated Clear Float Heat-Strengthened Glass - EWS 7A



04-B - 303 White Aluminum Components - EWS 7A,B,C,D,E



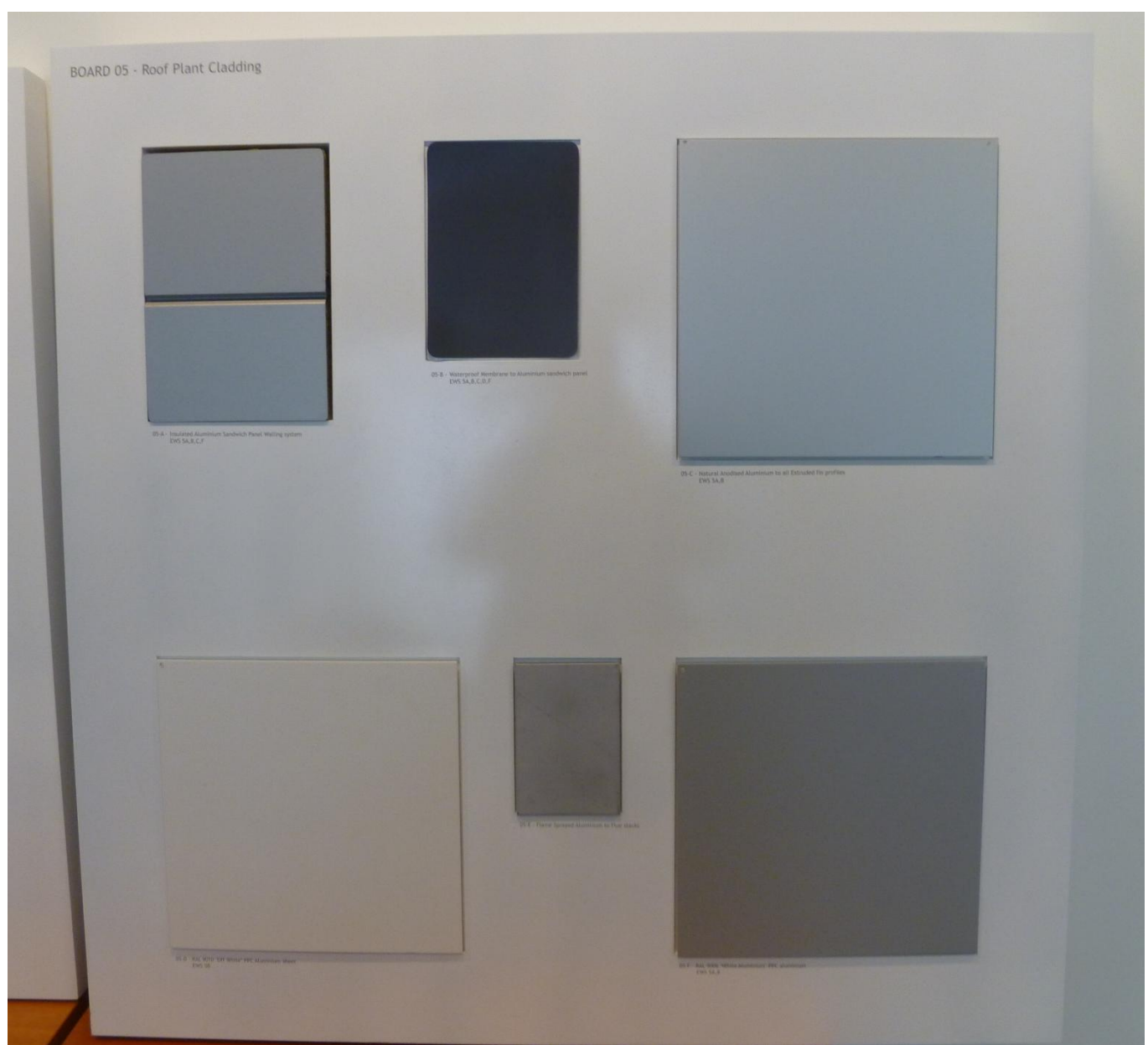
04-C - Natural Anodized Aluminum Sheet EWS 7A,E



04-D - Natural Anodized Aluminum Sheet with Rectangular Perforations - EWS 7B



04-E - Single Laminated Clear Float Heat-Strengthened Glass with an Anodized Aluminum Frame - EWS 7B





APPENDIX– Planning Condition 3 Signoff tracker

This covers the drawings to be issued to sign off condition 3B and 3C

Number	Description	Crick intended submission	Description	Drawing number	Size	Scale	Submission Date	Approval Date	Additional notes / comments
Conditon 3 - The following detailed drawings, and/or samples of material as appropriate shall be submitted to and approved in writing by the local Planning Authority before the relevant parts of work are begun on site.									
3A	Samples of all facing materials, to include mock-up sample panels 2 metres tall by 2 metres wide of the terracotta cladding, glazed curtain walling and the louvred roof.	Filmed presentation of 3 full scale façade visual mockups. Full scale mockups of portions of roof Louvers.Full scale mockups of portions of plant room enclosure panels.							
			Narrated film presenting the 3 full scale visual mockups prepared by SBV	Film	15mins	1:1	03/08/2012		Film uploaded to Youtube, Reviewed by LBC 24/04/2012 - Photographs submitted
			Portion of Type 7D Aluminium roof Louver produced by Levolux	Visual Mockup	1m x 0.75m	1:1	03/08/2012		Already reviewed by LBC, phototgraphs submitted
			Portion of Type 7B Glass roof Louver with Photovoltaics poduced by Levolux	Visual Mockup	1m x 0.75m	1:1	03/08/2012		Can be reviewed by LBC. Sample held at WT, phototgraphs submitted
			Portion of Type 5A Plant room enclosure external wall	Visual Mockup	3m x 4m	1:1	03/08/2012		Can be reviewed by LBC at ColnBrook if required, phototgraphs submitted
3B	Details including elevations and sections of all entrances, signage, windows and glazing at scale 1:5	Sub contractors drawings at scale 1:1 & 1:2 & 1:5							
			Material Codes - Typical Materials	3000-XXX-X-LG-0001-A01	A0	NA	03/08/2012		
			Material Codes - Legend	3000-XXX-X-LG-0002-A00	A0	NA	03/08/2012		
			Glass overview Drawing - WP3000	3000-XXX-X-LG-0010-C01	A0	NA	03/08/2012		
			Glass overview Drawing - WP3300	3300-XXX-X-LG-0015-A00	A0	NA	03/08/2012		
			Type 1A curtain wall cladding	3000-XXX-X-DT-1101-C01	A0	1:2	03/08/2012		
			Type 1B curtain wall cladding	3000-XXX-X-DT-1201-C01	A0	1:2	03/08/2012		
			Type 1C curtain wall cladding	3000-XXX-X-DT-1301-C01	A0	1:2	03/08/2012		
			Type 2A Precast Terracotta panels	3100-XXX-X-DT-2103-C01	A3	1:5	03/08/2012		
			Type 2B Precast Terracotta panels with windows	3000-XXX-X-DT-2201-C01	A0	1:2	03/08/2012		
			Type 2C Precast Terracotta panels with windows	3000-XXX-X-DT-2301-A01	A0	1:2	03/08/2012		
			Type 2D Precast Terracotta panels	3100-XXX-X-DT-2440-C01	A3	1:5	03/08/2012		
			Type 2E Precast Terracotta panels with windows	3100-XXX-X-DT-2501-C01	A3	1:5	03/08/2012		
			Type 3A Precast Terracotta panels with windows	3000-XXX-X-DT-3101-C01	A0	1:2	03/08/2012		
			Type 3B Precast Terracotta panels with windows	3000-XXX-X-DT-3201-C01	A0	1:2	03/08/2012		
			Type 4A East Atrium glazed wall -Typical vertical detail	3300-XXX-X-DT-4102-C01	A0	1:2	03/08/2012		
			Type 4A East Atrium glazed wall -Typ. horizontal detail	3300-XXX-X-DT-4103-C01	A0	1:2	03/08/2012		
			Type 4A East Atrium glazed wall - Detail at canopy	3300-XXX-X-DT-4106-A00	A0	1:2	03/08/2012		
			Type 4A West Atrium glazed wall - Typical details	3300-XXX-X-DT-4108-A00	A0	1:2	03/08/2012		
			Type 4A West Atrium glazed wall - Typ. horizontal detail	3300-XXX-X-DT-4109-A00	A0	1:2	03/08/2012		
			Type 4B North Atrium glazed wall	3000-XXX-X-DT-4202-C01	A0	1:2	03/08/2012		
			Type 4B South Atrium glazed wall - typical detils	3000-XXX-X-DT-4201-C01	A0	1:2	03/08/2012		
			Type 4B South Atrium glazed wall - opening vents	3000-XXX-X-DT-4203-A01	A0	1:2	03/08/2012		
			Type 4B South Atrium glazed wall - interface	3000-XXX-X-DT-4205-A01	A0	1:2	03/08/2012		
			Type 4C West staff entrance glazing				30/09/2012		Proposed submission date
			Type 4D Dining Room Glazing				30/09/2012		Proposed submission date
			Type 4E Exhibition Space glazing				30/09/2012		Proposed submission date
			Type 4F Teaching Lab glazing, north and south				30/09/2012		Proposed submission date
			Type 4G Teaching lab glazing East				30/09/2012		Proposed submission date
			Type 4H Seminar Suite Glazing	3300-XXX-X-DT-4801-A01	A0	1:2	03/08/2012		
			Type 4J Living Centre Glazing	3300-XXX-X-DT-4901-A00	A0	1:2	03/08/2012		
			Type 4K Security Room Glazing				30/09/2012		Proposed submission date
			Type 4L West staff Entrance Lift enclosure Glazing	3300-XXX-X-DT-4950-A00	A0	1:2	03/08/2012		
			Type 4M Back painted glass to Teaching Lab	3300-XXX-X-DT-4970-A00	A0	1:2	03/08/2012		
			Type 5A Plant room enclosure external	3400-DA-XX-DTL-XXX-XX-0014-P02	A0	1:5	03/08/2012		
			Type 5C Plant room enclosure external	3400-DA-XX-DTL-XXX-XX-0046-P01	A0	1:5	03/08/2012		
			Type 5F Plant room enclosure external	3400-DA-XX-DTL-XXX-XX-0047-P01	A0	1:5	03/08/2012		
			Type 7A Flat, solid Aluminium Roof louvers	3200-XXX-ZX-DTL-0004-A01	A1	1:5	03/08/2012		
			Type 7B Glass Roof Louvers	3200-XXX-ZX-DTL-0007-A02	A1	1:5	03/08/2012		
			Type 7C Glass roof Louvers with Photovoltaics	3200-XXX-ZX-SCM-0016-A01	A1	NTS	03/08/2012		
			Type 7D Flat Perforated Aluminium Roof Louvers	3200-XXX-ZX-DTL-0009-A01	A1	1:5	03/08/2012		
			Type 7E Twisted Aluminium roof Louvers	3200-XXX-ZX-DTL-0010-A01	A1	1:5	03/08/2012		
			Type 7E Twisted Louvers - SE corner	3200-XXX-ZD-DTL-0011-A02	A1	1:5	03/08/2012		
			Type 8 Glazed Atium Roof - typical gutter detail	3300-XXX-X-DT-8005-C01	A0	1:1	03/08/2012		
			Type 8 Glazed Atium Roof - typical detail sections	3300-XXX-X-DT-8006-C01	A0	1:1	03/08/2012		
			Type 9 External metal soffet cladding				30/09/2012		Proposed submission date
			Type 10 Single glazed canopy to East entrance	3300-XXX-X-DT-4107-A00	A0	1:2	03/08/2012		
			Type 12 Solid metal escape and service doors				30/09/2012		Proposed submission date
			Type 13 Single glazed Entrance doors				30/09/2012		Proposed submission date
			Type 14 Single glazed Revolving doors.				30/09/2012		Proposed submission date
			Type 16 Double glazed Entrance Doors.				30/09/2012		Proposed submission date

