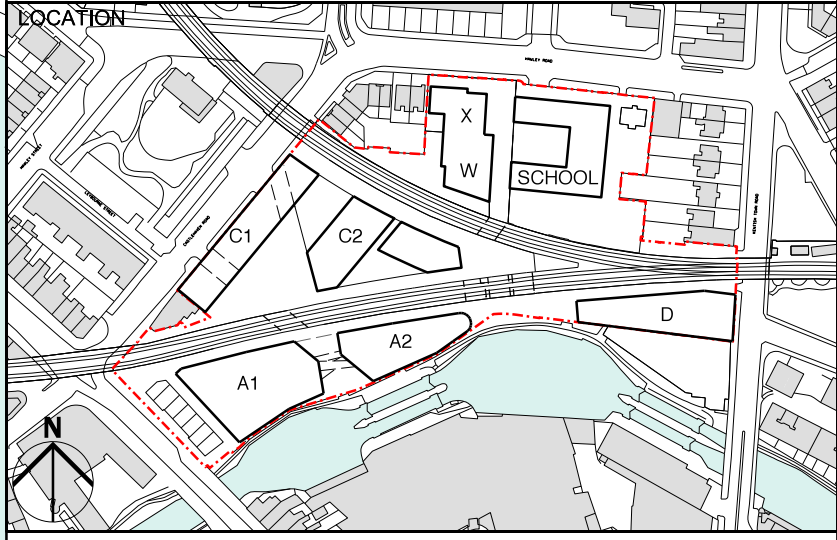


NOTES:  
1. INTERNAL RESIDENTIAL LAYOUTS ARE INDICATIVE ONLY

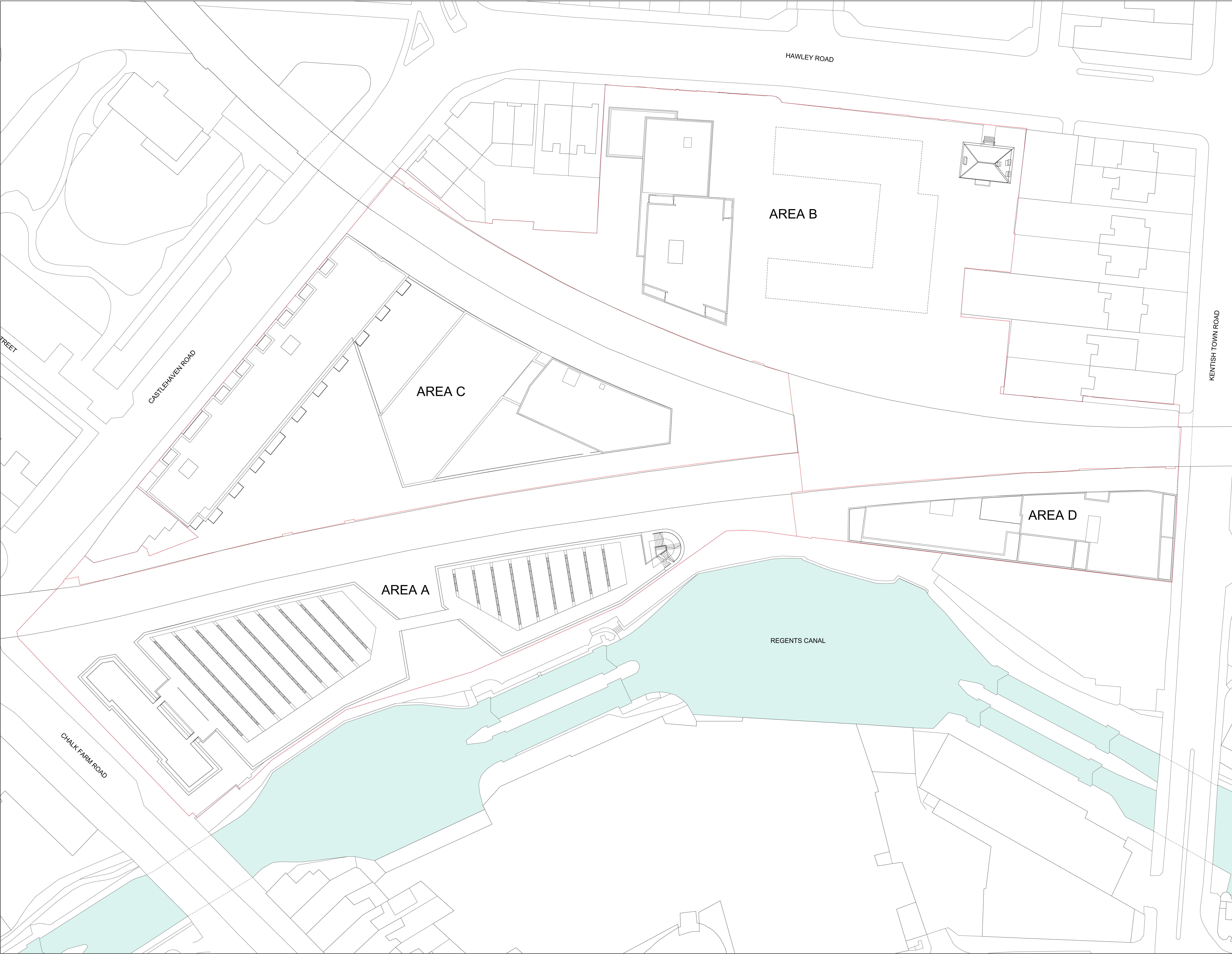
- REV DATE
- NOTE
1. Do not scale from this drawing, other than for Planning purposes.
  2. All dimensions to be checked on site by the contractor and such dimensions to be his responsibility.
  3. Report all drawing errors, omissions and discrepancies to the architect.
  4. This document may be issued in an uncontrolled CAD format to enable others to use it as background information to make alterations and/or additions. In that instance the file will be accompanied by a PDF version. It is for those making such alterations and additions to ensure that they make use of current background information. AHMM Ltd accepts no liability for any such alterations or additions to the background information or altering out of changes to background information which occur prior to alterations of additions being made.



**ALLFORD HALL MONAGHAN MORRIS**  
ARCHITECTS Ltd  
2ND FLOOR BLOCK C, 5-23 OLD STREET LONDON EC1V 9HL  
TEL 020 7251 5281 FAX 020 7251 5123 WEB WWW.AHMM.CO.UK

drawing title / location		PROPOSED MASTERPLAN		status	
ROOF PLAN		PLANNING		-	
drawn by	checked	scale	status		
DC	WL	1:250@A0 ; 1:500@A2	PLANNING		
project	zone	source	classification	drawing no.	revision
12001	MP	[00]	105	-	





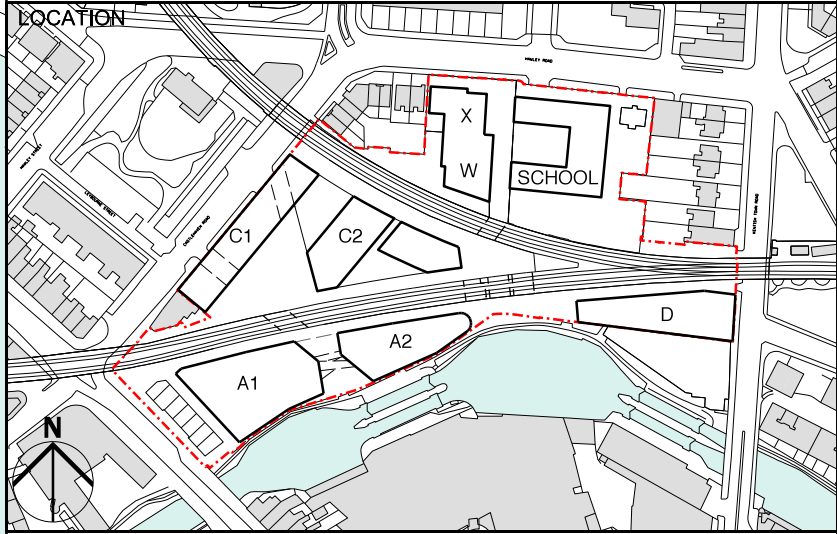
Area Boundaries

29/08/12 PLANNING ISSUE

REV DATE

NOTE

1. Do not scale from this drawing, other than for Planning purposes.
2. All dimensions to be checked on site by the contractor and such dimensions to be his responsibility.
3. Report all drawing errors, omissions and discrepancies to the architect.
4. This document may be issued in an uncontrolled CAD format to enable others to use it as background information to make alterations or additions. In that instance the file will be accompanied by a PDF version. It is for those making such alterations and additions to ensure that they make use of current background information. AHMM Ltd accepts no liability for any such alterations or additions to the background information or altering out of changes to background information which occur prior to alterations or additions being made.



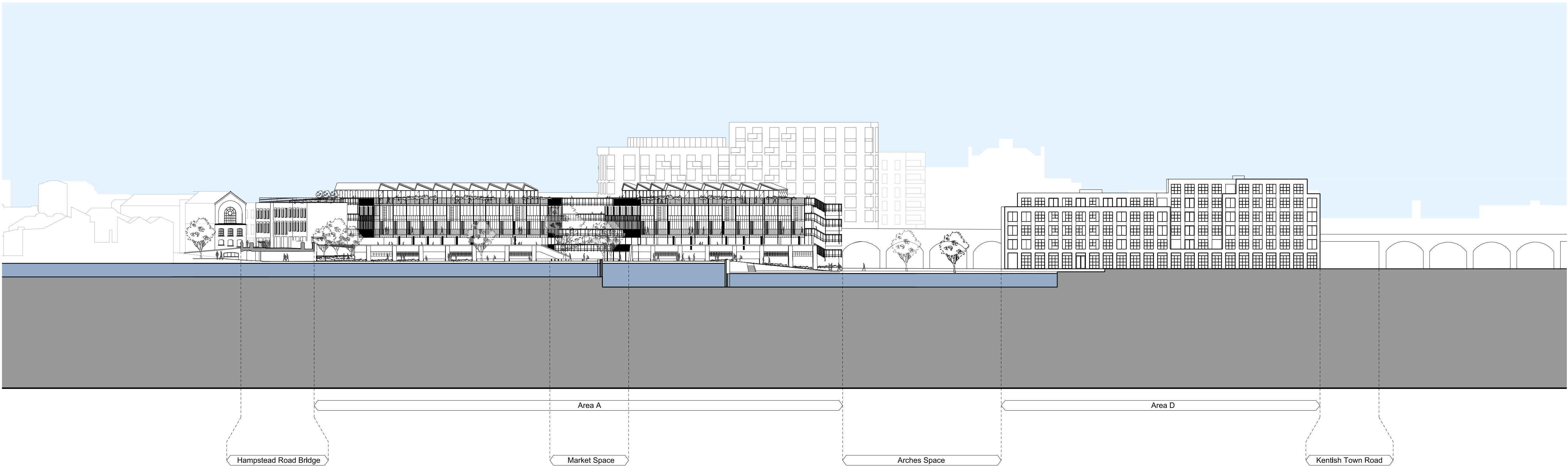
**ALLFORD HALL MONAGHAN MORRIS**  
ARCHITECTS Ltd  
2ND FLOOR BLOCK C, 5-23 OLD STREET LONDON EC1V 9HL  
TEL 020 7251 5261 FAX 020 7251 5123 WEB WWW.AHMM.CO.UK

JOB TITLE  
CAMDEN LOCK VILLAGE

drawing title / location  
PROPOSED AREA BOUNDARIES PLAN  
ROOF PLAN

drawn by DC	checked WL	scale 1:250@A0 ; 1:500@A2		status PLANNING	
project 12001		zone MP	source [00]	drawing no. 110	revision -





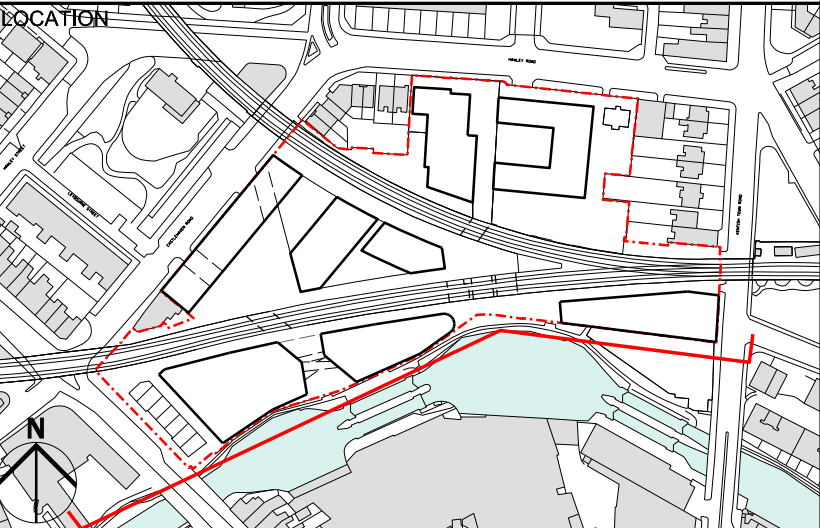
KEY / NOTES

- 31/08/12 PLANNING ISSUE

REV DATE

NOTE

1. Do not scale from this drawing, other than for Planning purposes.
2. All dimensions to be checked on site by the contractor and such dimensions to be his responsibility.
3. Report all drawing errors, omissions and discrepancies to the architect.
4. This document may be issued in an uncontrolled CAD format to enable others to use it as background information to make alterations and/or additions. In that instance the file will be accompanied by a PDF version. It is for those making such alterations and additions to ensure that they make use of current background information. AHMM Ltd accepts no liability for any such alterations or additions to the background information or arising out of changes to background information which occur prior to alterations of additions being made.



**ALLFORD HALL MONAGHAN MORRIS**

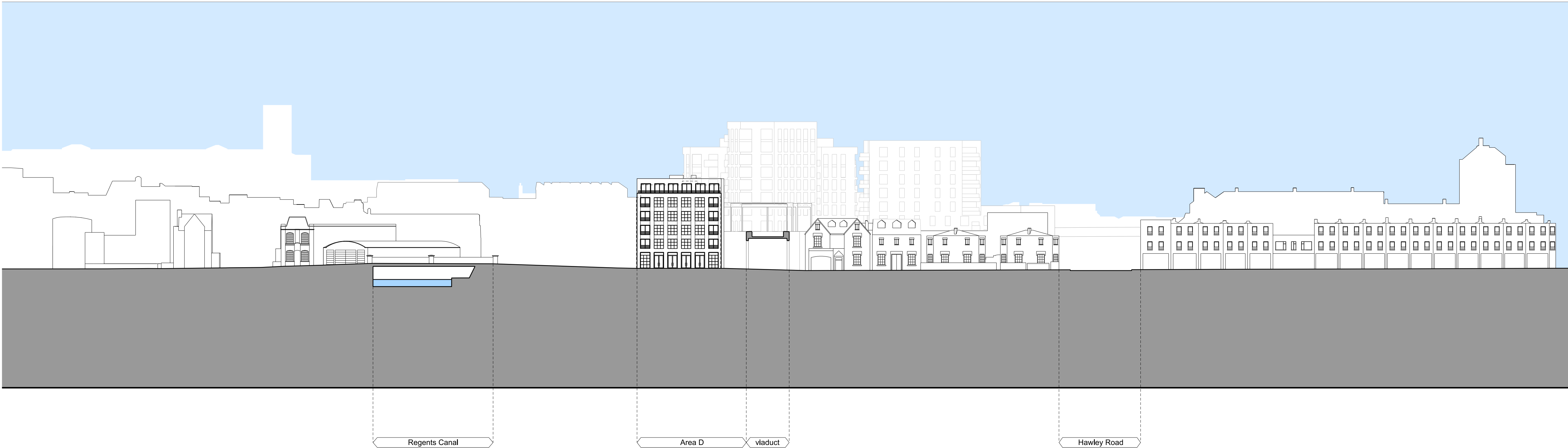
ARCHITECTS Ltd  
2ND FLOOR, BLOCK C, 5-23 OLD STREET LONDON EC1V 9HL  
TEL 020 7251 5261 FAX 020 7251 5123 WEB WWW.AHMM.CO.UK

job title  
CAMDEN LOCK VILLAGE

drawing title / location  
PROPOSED MASTERPLAN ELEVATION -  
REGENTS CANAL

drawn by	checked	scale	status
DC	WL	1:500@A1; 1:1000@A3	PLANNING

project	zone	source	classification	drawing no.	revision
12001	MP		[00]	200	-



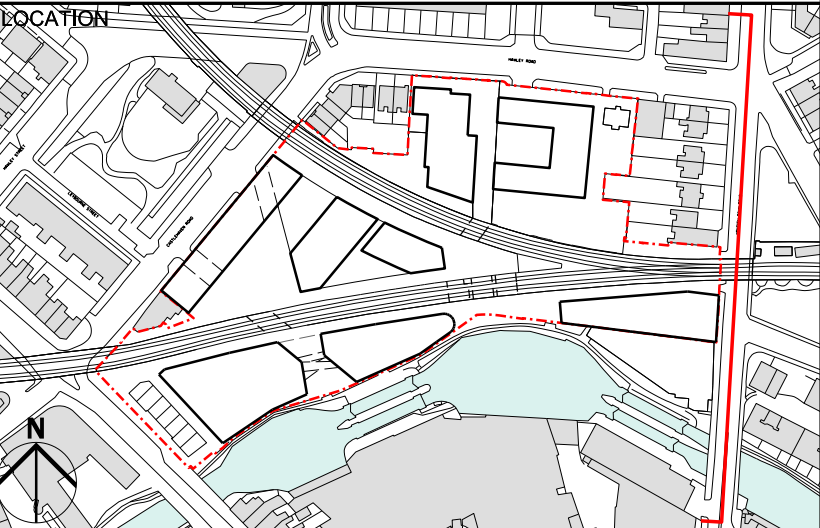
KEY / NOTES

- 31/08/12 PLANNING ISSUE

REV DATE

NOTE

1. Do not scale from this drawing, other than for Planning purposes.
2. All dimensions to be checked on site by the contractor and such dimensions to be his responsibility.
3. Report all drawing errors, omissions and discrepancies to the architect.
4. This document may be issued in an uncontrolled CAD format to enable others to use it as background information to make alterations and/or additions. In that instance the file will be accompanied by a PDF version. It is for those making such alterations and additions to ensure that they make use of current background information. AHMM Ltd accepts no liability for any such alterations or additions to the background information or arising out of changes to background information which occur prior to alterations of additions being made.



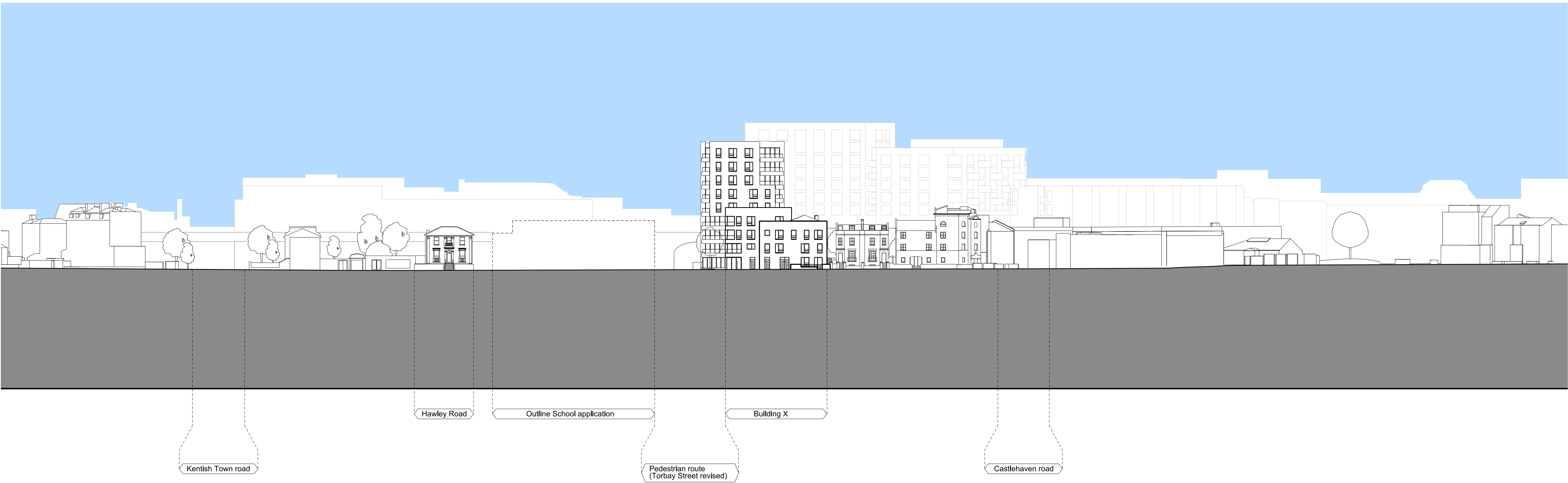
**ALLFORD HALL MONAGHAN MORRIS**  
ARCHITECTS Ltd  
2ND FLOOR, BLOCK C, 5-23 OLD STREET LONDON EC1V 9HL  
TEL 020 7251 5261 FAX 020 7251 5123 WEB WWW.AHMM.CO.UK

job title  
CAMDEN LOCK VILLAGE

drawing title / location  
PROPOSED MASTERPLAN ELEVATION -  
KENTISH TOWN ROAD

drawn by	checked	scale	status
DC	WL	1:500@A1; 1:1000@A3	PLANNING

project	zone	source	classification	drawing no.	revision
12001	MP		[00]	201	-



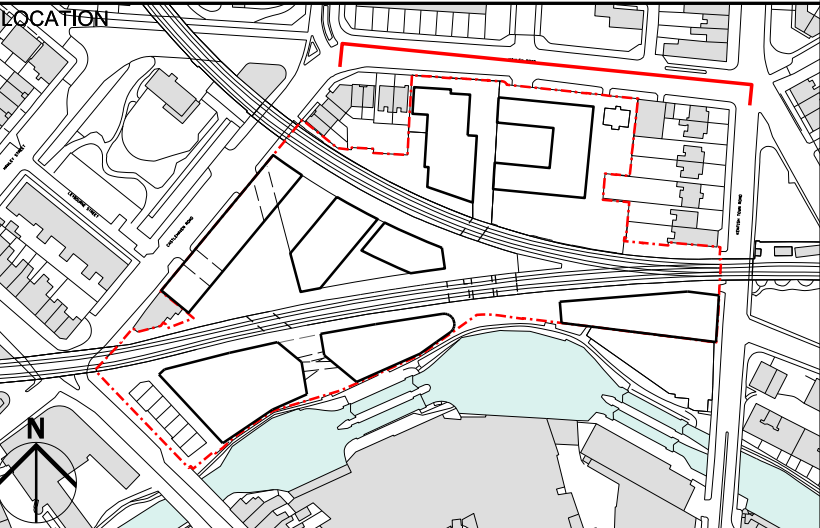
KEY / NOTES

- 31/08/12 PLANNING ISSUE

REV DATE

NOTE

1. Do not scale from this drawing, other than for Planning purposes.
2. All dimensions to be checked on site by the contractor and such dimensions to be his responsibility.
3. Report all drawing errors, omissions and discrepancies to the architect.
4. This document may be issued in an uncontrolled CAD format to enable others to use it as background information to make alterations and/or additions. In that instance the file will be accompanied by a PDF version. It is for those making such alterations and additions to ensure that they make use of current background information. AHMM Ltd accepts no liability for any such alterations or additions to the background information or arising out of changes to background information which occur prior to alterations of additions being made.



**ALLFORD HALL MONAGHAN MORRIS**

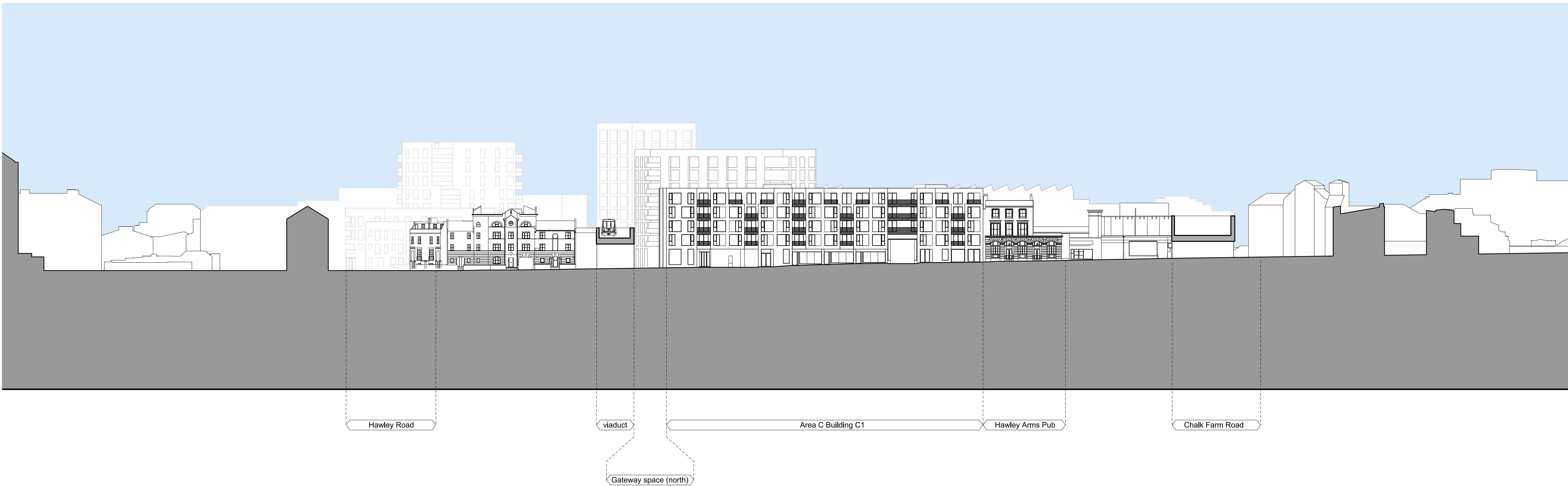
ARCHITECTS Ltd  
2ND FLOOR, BLOCK C, 5-23 OLD STREET LONDON EC1V 9HL  
TEL 020 7251 5261 FAX 020 7251 5123 WEB WWW.AHMM.CO.UK

job title  
CAMDEN LOCK VILLAGE

drawing title / location  
PROPOSED MASTERPLAN ELEVATION -  
HAWLEY ROAD

drawn by	checked	scale	status
DC	WL	1:500@A1; 1:1000@A3	PLANNING

project	zone	source	classification	drawing no.	revision
12001	MP		[00]	202	-



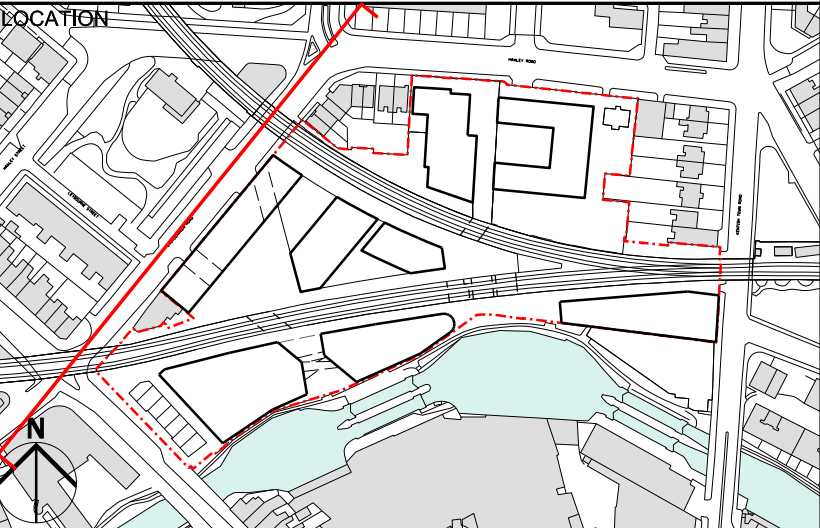
KEY / NOTES

- 31/08/12 PLANNING ISSUE

REV DATE

NOTE

1. Do not scale from this drawing, other than for Planning purposes.
2. All dimensions to be checked on site by the contractor and such dimensions to be his responsibility.
3. Report all drawing errors, omissions and discrepancies to the architect.
4. This document may be issued in an uncontrolled CAD format to enable others to use it as background information to make alterations and/or additions. In that instance the file will be accompanied by a PDF version. It is for those making such alterations and additions to ensure that they make use of current background information. AHMM Ltd accepts no liability for any such alterations or additions to the background information or arising out of changes to background information which occur prior to alterations of additions being made.



**ALLFORD HALL MONAGHAN MORRIS**

ARCHITECTS Ltd  
2ND FLOOR, BLOCK C, 5-23 OLD STREET LONDON EC1V 9HL  
TEL 020 7251 5261 FAX 020 7251 5123 WEB WWW.AHMM.CO.UK

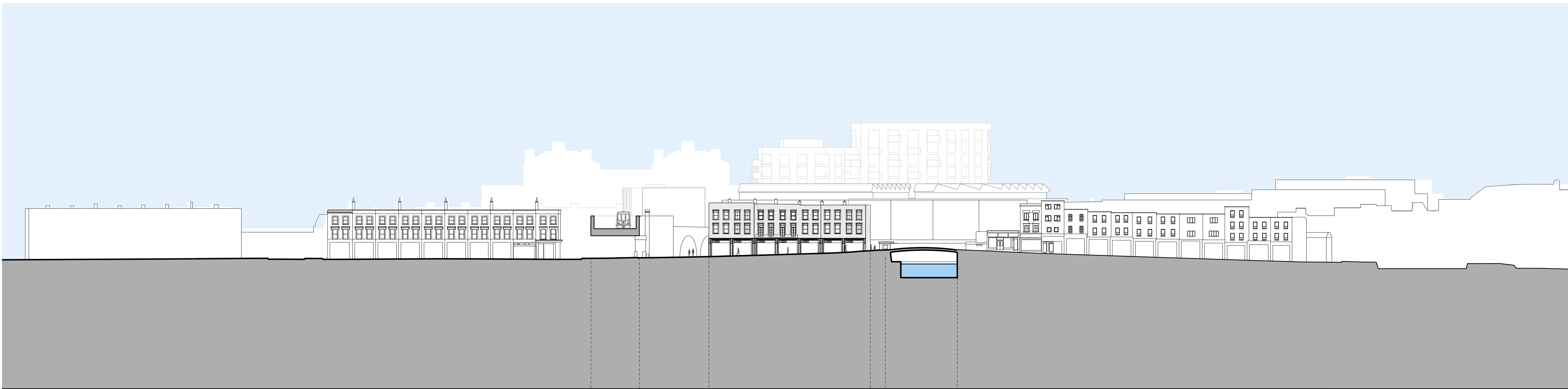
job title  
CAMDEN LOCK VILLAGE

drawing title / location  
PROPOSED MASTERPLAN ELEVATION -  
CASTLEHAVEN ROAD

drawn by	checked	scale	status
DC	WL	1:500@A1; 1:1000@A3	PLANNING

project	zone	source	classification	drawing no.	revision
12001	MP		[00]	203	-





viaduct

1-8 Chalk Farm Road

Regents Canal

Gateway space (west)

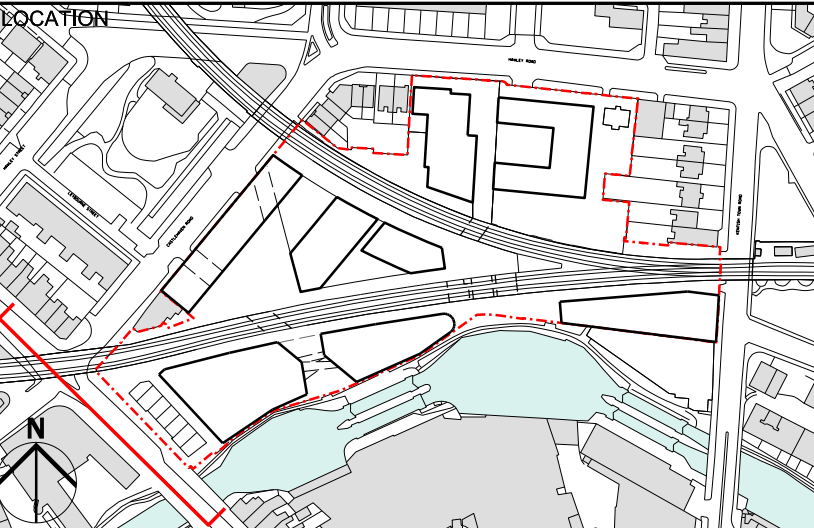
KEY / NOTES

- 13/08/12 PLANNING ISSUE

REV DATE

NOTE

1. Do not scale from this drawing, other than for Planning purposes.
2. All dimensions to be checked on site by the contractor and such dimensions to be his responsibility.
3. Report all drawing errors, omissions and discrepancies to the architect.
4. This document may be issued in an uncontrolled CAD format to enable others to use it as background information to make alterations and/or additions. In that instance the file will be accompanied by a PDF version. It is for those making such alterations and additions to ensure that they make use of current background information. AHMM Ltd accepts no liability for any such alterations or additions to the background information or arising out of changes to background information which occur prior to alterations of additions being made.



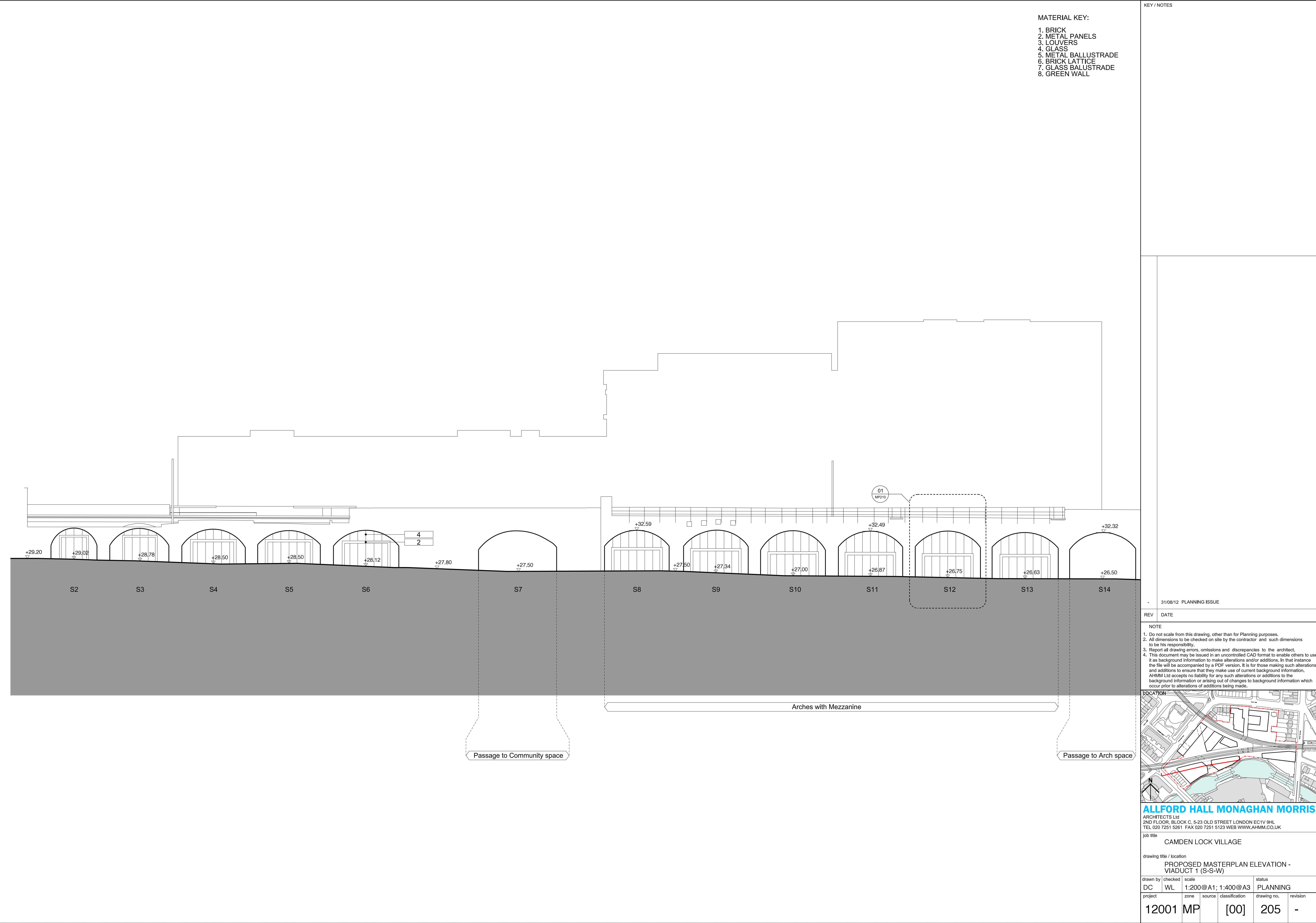
**ALLFORD HALL MONAGHAN MORRIS**  
ARCHITECTS Ltd  
2ND FLOOR, BLOCK C, 5-23 OLD STREET LONDON EC1V 9HL  
TEL 020 7251 5261 FAX 020 7251 5123 WEB WWW.AHMM.CO.UK

job title  
CAMDEN LOCK VILLAGE

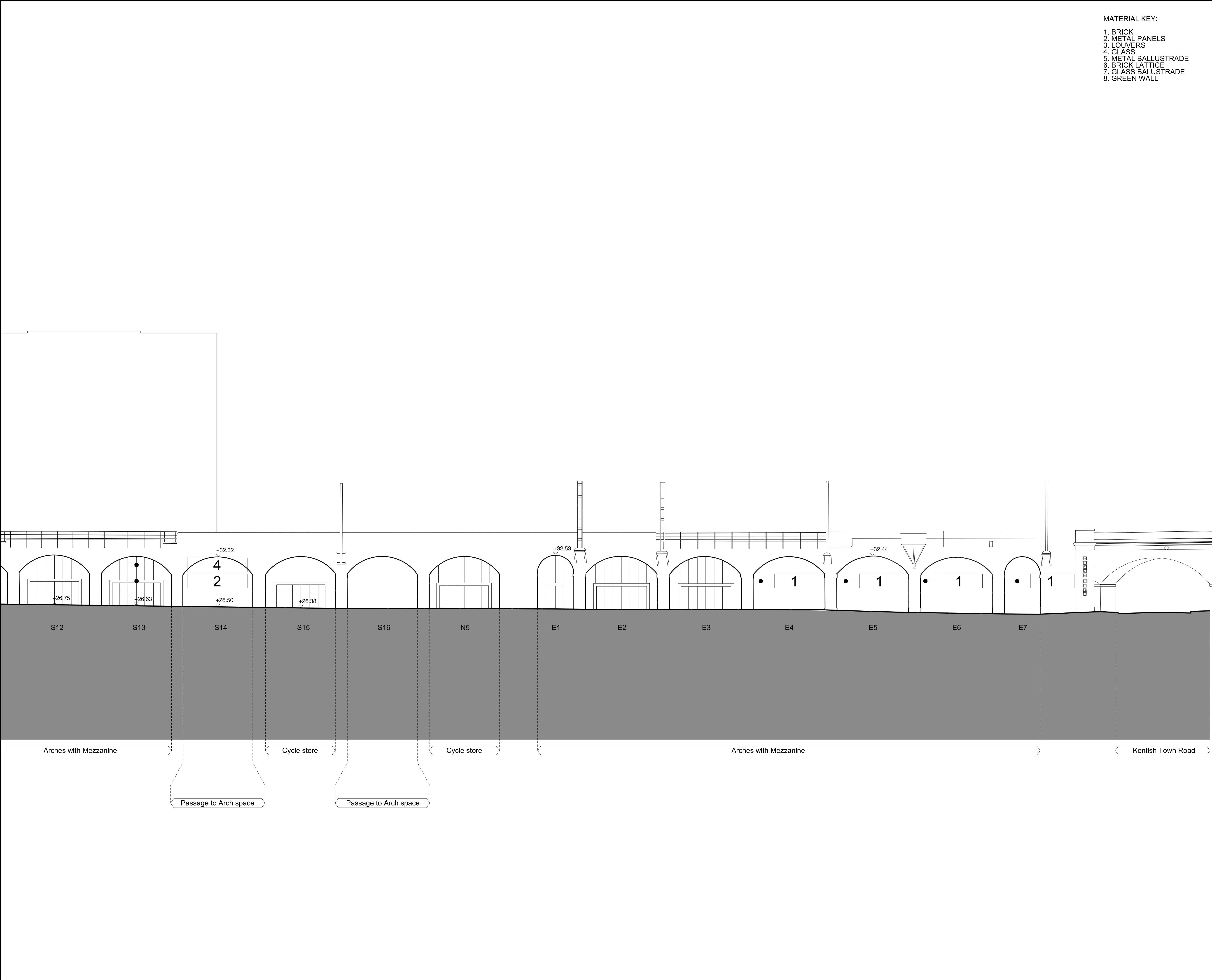
drawing title / location  
PROPOSED MASTERPLAN ELEVATION -  
CHALK FARM ROAD

drawn by	checked	scale	status
DC	WL	1:500@A1; 1:1000@A3	PLANNING

project	zone	source	classification	drawing no.	revision
12001	MP		[00]	204	-







KEY / NOTES

-31/08/12 PLANNING ISSUE

REV	DATE
-----	------

NOTE

1. Do not scale from this drawing, other than for Planning purposes.

2. All dimensions to be checked on site by the contractor and such dimensions to be his responsibility.

3. Report all drawing errors, omissions and discrepancies to the architect.

4. This document may be issued in an uncontrolled CAD format to enable others to use it as background information to make alterations and/or additions. In that instance the file will be accompanied by a PDF version. It is for those making such alterations and additions to ensure that they make use of current background information. AHMM Ltd accepts no liability for any such alterations or additions to the background information or arising out of changes to background information which occur prior to alterations of additions being made.

LOCATION

**ALLFORD HALL MONAGHAN MORRIS**  
ARCHITECTS Ltd  
2ND FLOOR, BLOCK C, 5-23 OLD STREET LONDON EC1V 9HL  
TEL 020 7251 5261 FAX 020 7251 5123 WEB WWW.AHMM.CO.UK

job title

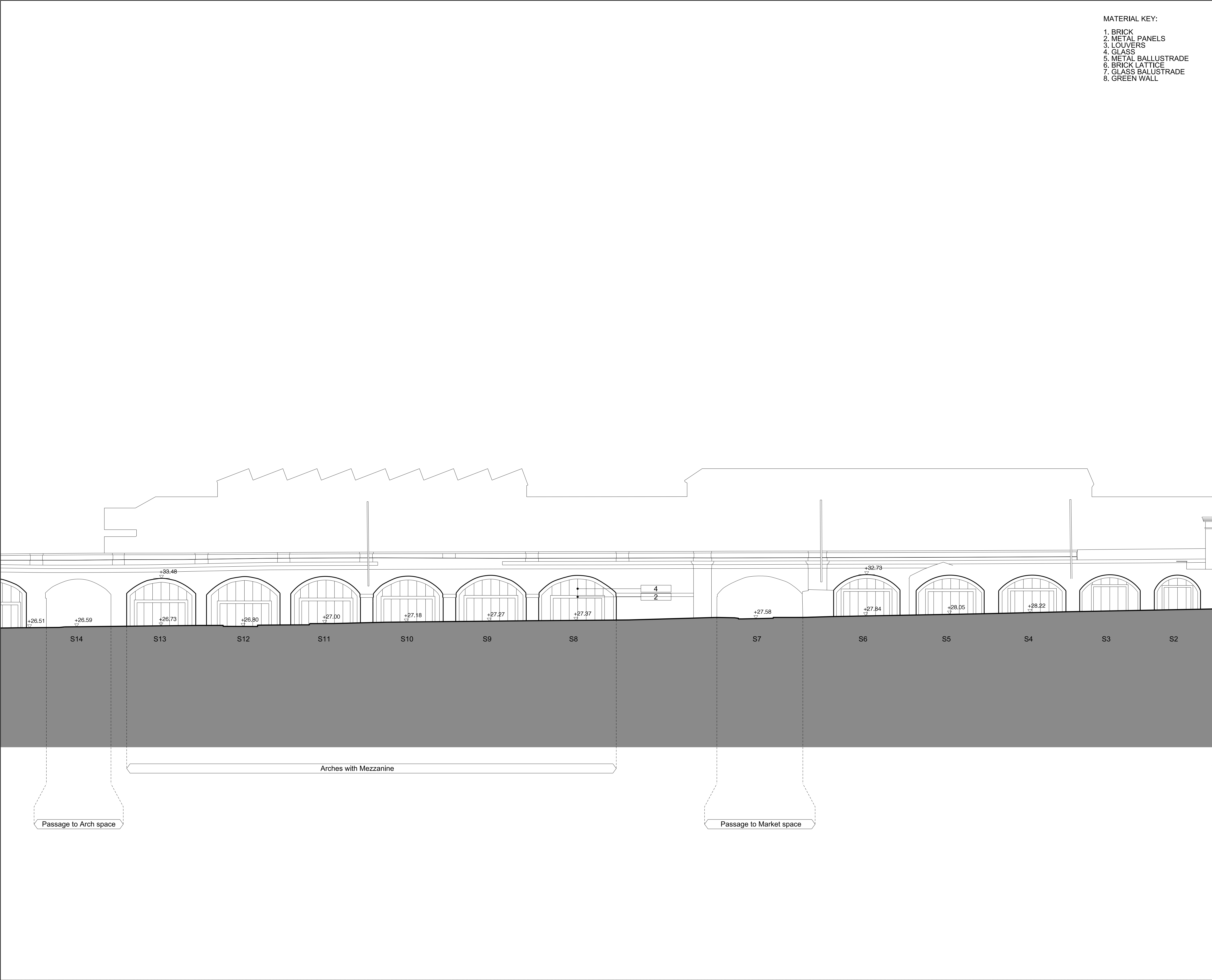
CAMDEN LOCK VILLAGE

drawing title / location

PROPOSED MASTERPLAN ELEVATION - VIADUCT 2 (S-S-E)

drawn by	checked	scale	status
DC	WL	1:200@A1; 1:400@A3	PLANNING

project	zone	source	classification	drawing no.	revision
12001	MP		[00]	206	-



KEY / NOTES

-31/08/12PLANNING ISSUE

REV	DATE

NOTE

1. Do not scale from this drawing, other than for Planning purposes.  
2. All dimensions to be checked on site by the contractor and such dimensions to be his responsibility.  
3. Report all drawing errors, omissions and discrepancies to the architect.  
4. This document may be issued in an uncontrolled CAD format to enable others to use it as background information to make alterations and/or additions. In that instance the file will be accompanied by a PDF version. It is for those making such alterations and additions to ensure that they make use of current background information. AHMM Ltd accepts no liability for any such alterations or additions to the background information or arising out of changes to background information which occur prior to alterations of additions being made.

LOCATION

ALLFORD HALL MONAGHAN MORRIS

ARCHITECTS Ltd  
2ND FLOOR, BLOCK C, 5-23 OLD STREET LONDON EC1V 9HL  
TEL 020 7251 5261 FAX 020 7251 5123 WEB WWW.AHMM.CO.UK

job title

CAMDEN LOCK VILLAGE

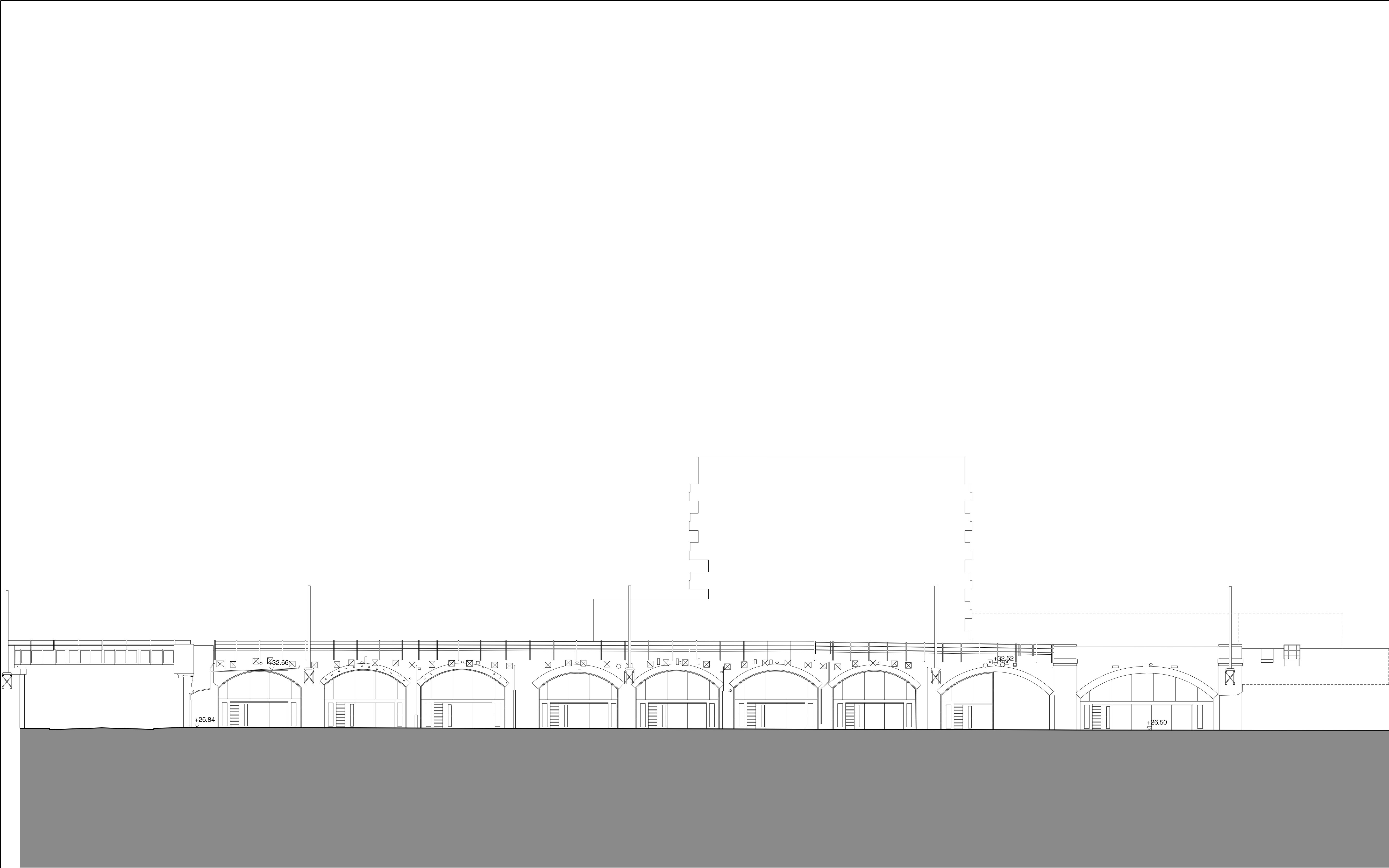
drawing title / location

PROPOSED MASTERPLAN ELEVATION - VIADUCT 3 (S-N)

drawn by	checked	scale	status
DC	WL	1:200@A1; 1:400@A3	PLANNING

project	zone	source	classification	drawing no.	revision
12001	MP			207	-



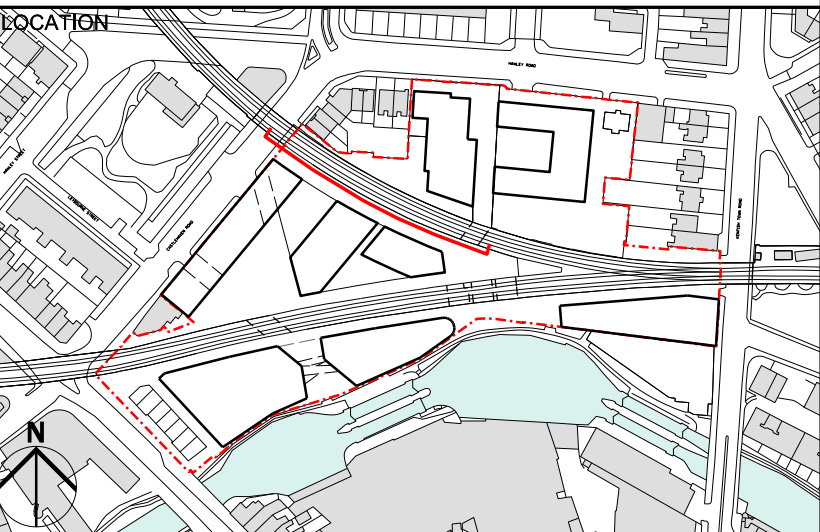


KEY / NOTES	
-	

REV	DATE
-	31/08/12 PLANNING ISSUE

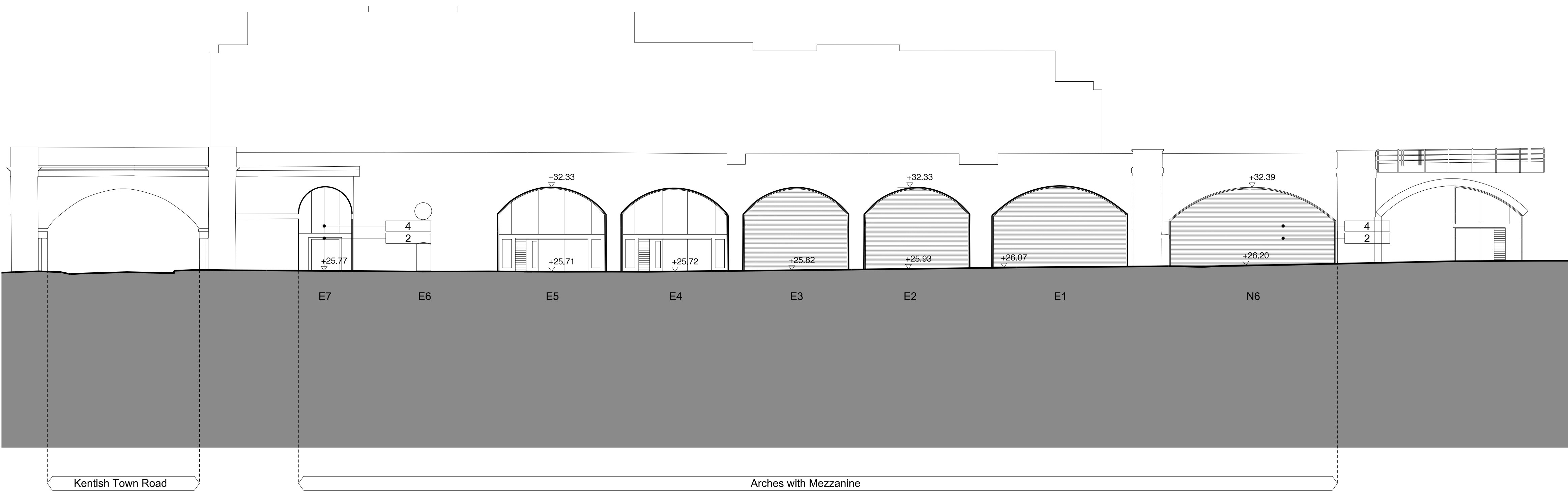
NOTE

1. Do not scale from this drawing, other than for Planning purposes.  
2. All dimensions to be checked on site by the contractor and such dimensions to be his responsibility.  
3. Report all drawing errors, omissions and discrepancies to the architect.  
4. This document may be issued in an uncontrolled CAD format to enable others to use it as background information to make alterations and/or additions. In that instance the file will be accompanied by a PDF version. It is for those making such alterations and additions to ensure that they make use of current background information. AHMM Ltd accepts no liability for any such alterations or additions to the background information or arising out of changes to background information which occur prior to alterations of additions being made.



**ALLFORD HALL MONAGHAN MORRIS**  
ARCHITECTS Ltd  
2ND FLOOR, BLOCK C, 5-23 OLD STREET LONDON EC1V 9HL  
TEL 020 7251 5261 FAX 020 7251 5123 WEB WWW.AHMM.CO.UK

job title					
CAMDEN LOCK VILLAGE					
drawing title / location					
PROPOSED MASTERPLAN ELEVATION - VIADUCT 4 (N-S)					
drawn by	checked	scale	status		
DC	WL	1:200@A1; 1:400@A3	PLANNING		
project	zone	source	classification	drawing no.	revision
12001	MP		[00]	208	-



- MATERIAL KEY:
1. BRICK
  2. METAL PANELS
  3. LOUVERS
  4. GLASS
  5. METAL BALLUSTRADE
  6. BRICK LATTICE
  7. GLASS BALUSTRADE
  8. GREEN WALL

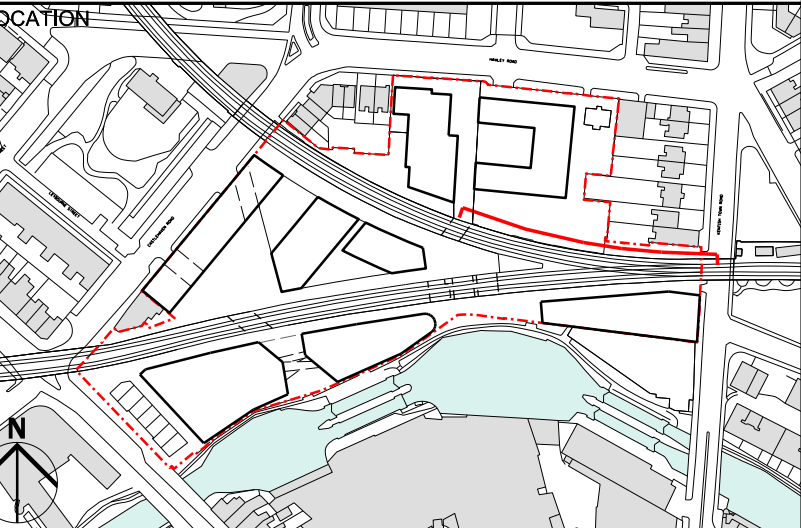
KEY / NOTES

- 31/08/12 PLANNING ISSUE

REV DATE

NOTE

1. Do not scale from this drawing, other than for Planning purposes.
2. All dimensions to be checked on site by the contractor and such dimensions to be his responsibility.
3. Report all drawing errors, omissions and discrepancies to the architect.
4. This document may be issued in an uncontrolled CAD format to enable others to use it as background information to make alterations and/or additions. In that instance the file will be accompanied by a PDF version. It is for those making such alterations and additions to ensure that they make use of current background information. AHMM Ltd accepts no liability for any such alterations or additions to the background information or arising out of changes to background information which occur prior to alterations of additions being made.



**ALLFORD HALL MONAGHAN MORRIS**  
ARCHITECTS Ltd  
2ND FLOOR, BLOCK C, 5-23 OLD STREET LONDON EC1V 9HL  
TEL 020 7251 5261 FAX 020 7251 5123 WEB WWW.AHMM.CO.UK

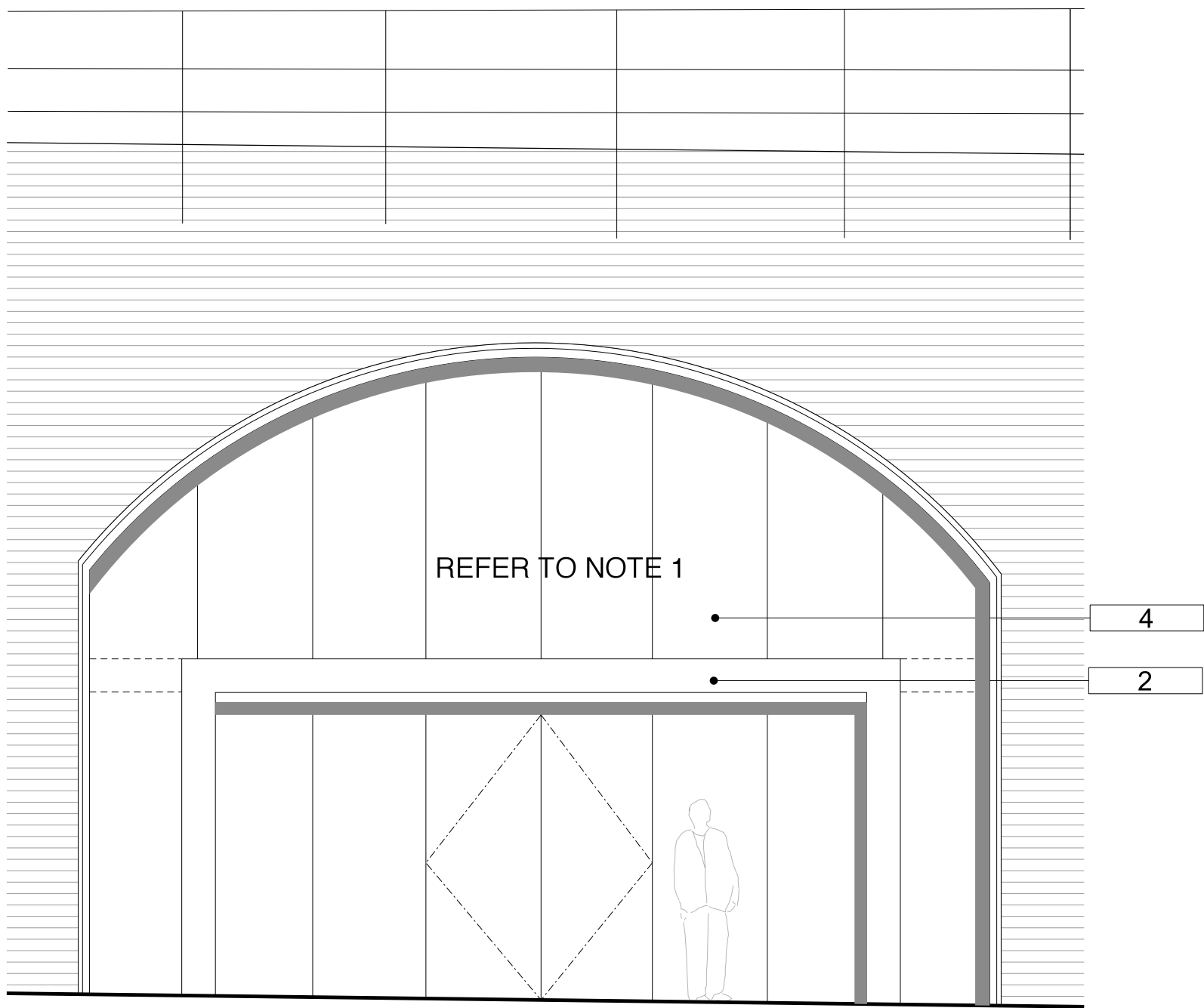
job title  
CAMDEN LOCK VILLAGE

drawing title / location  
PROPOSED MASTERPLAN ELEVATION -  
VIADUCT 5 (N-N-E)

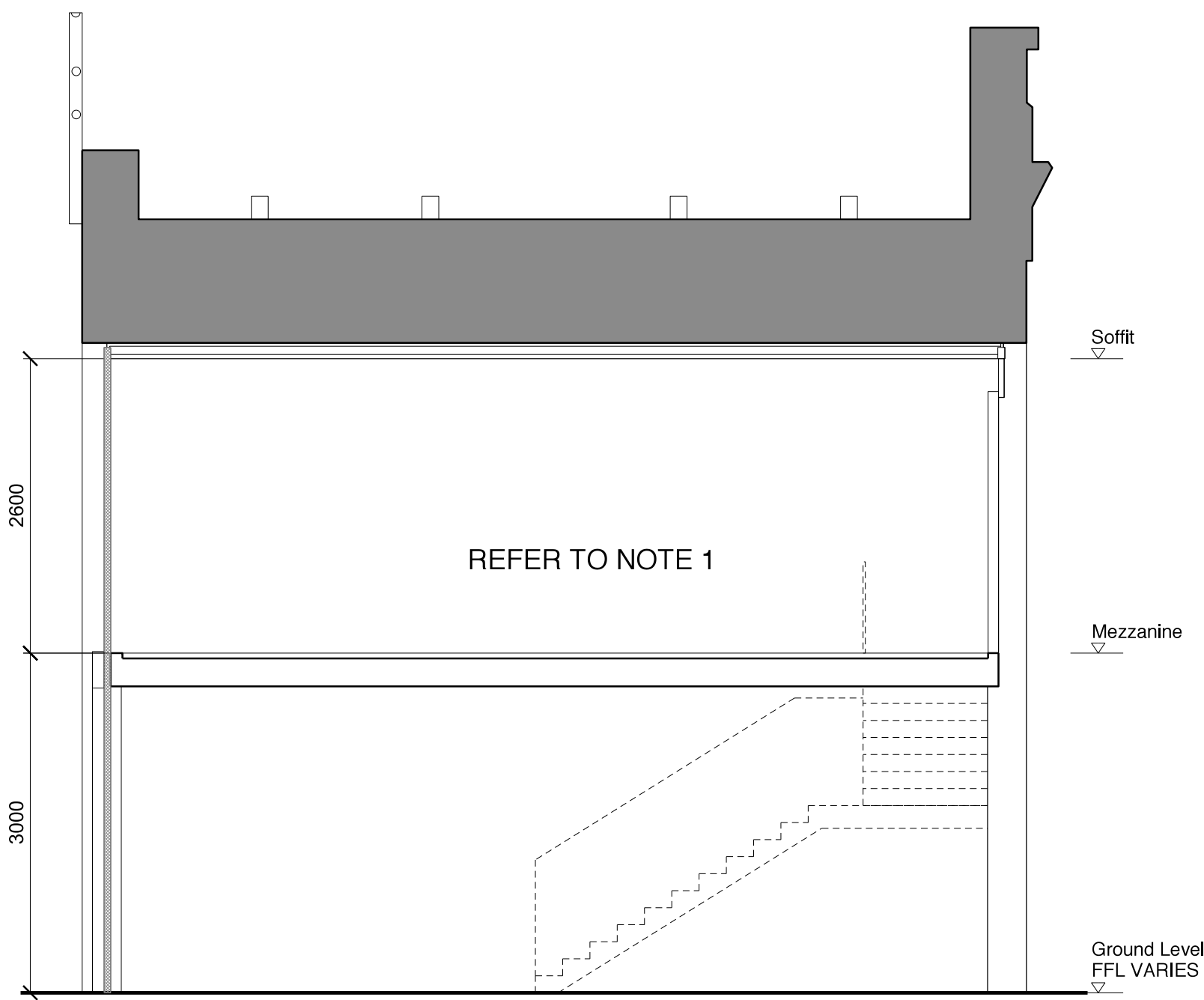
drawn by	checked	scale	status
DC	WL	1:200@A1; 1:400@A3	PLANNING

project	zone	source	classification	drawing no.	revision
12001	MP		[00]	209	-

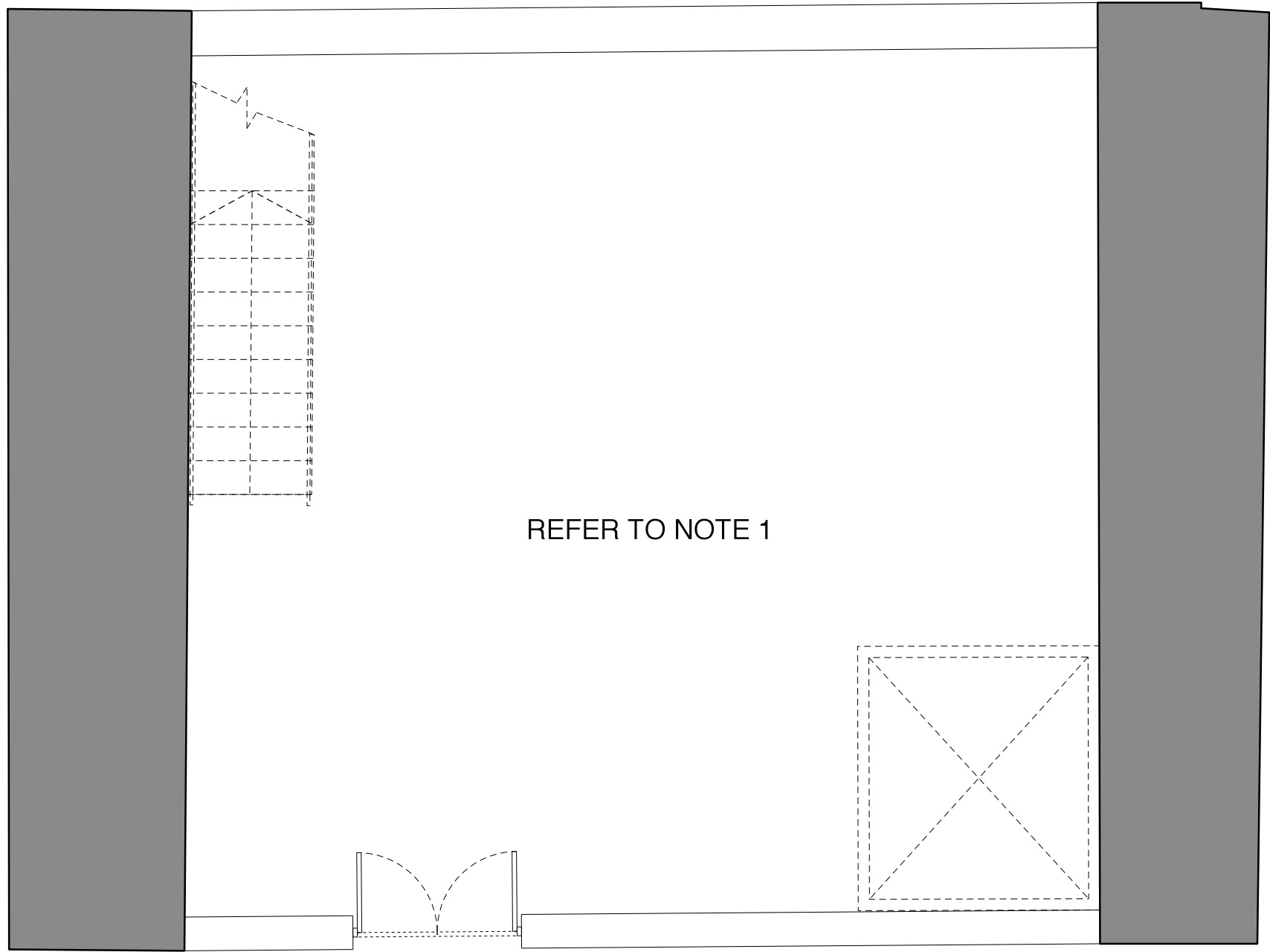




01 Elevation  
1:50



02 Section  
1:50



03 Plan  
1:50

- MATERIAL KEY:
- 1. BRICK
  - 2. METAL PANELS
  - 3. LOUVERS
  - 4. GLASS
  - 5. METAL BALLUSTRADE
  - 6. BRICK LATTICE
  - 7. GLASS BALUSTRADE
  - 8. GREEN WALL

KEY / NOTES

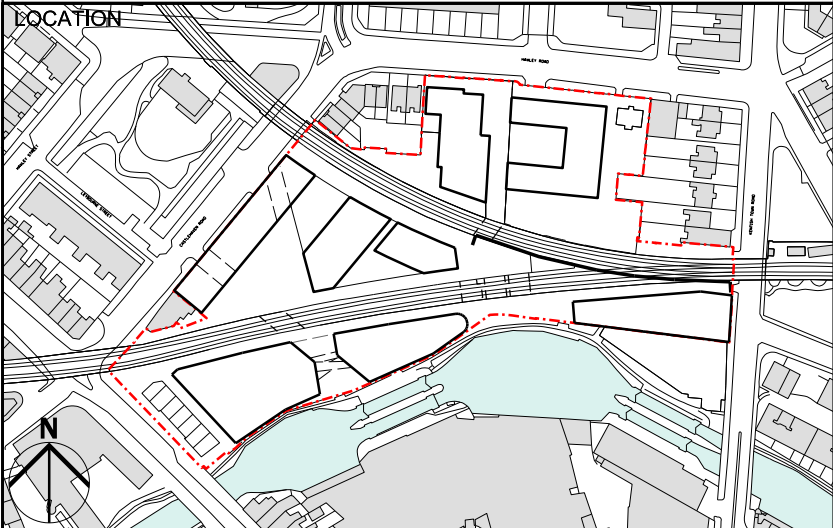
1. VIADUCT INTERNAL LAYOUTS ARE INDICATIVE ONLY

1 13/08/12 PLANNING ISSUE

REV DATE

NOTE

1. Do not scale from this drawing, other than for Planning purposes.
2. All dimensions to be checked on site by the contractor and such dimensions to be his responsibility.
3. Report all drawing errors, omissions and discrepancies to the architect.
4. This document may be issued in an uncontrolled CAD format to enable others to use it as background information to make alterations and/or additions. In that instance the file will be accompanied by a PDF version. It is for those making such alterations and additions to ensure that they make use of current background information. AHMM Ltd accepts no liability for any such alterations or additions to the background information or arising out of changes to background information which occur prior to alterations of additions being made.

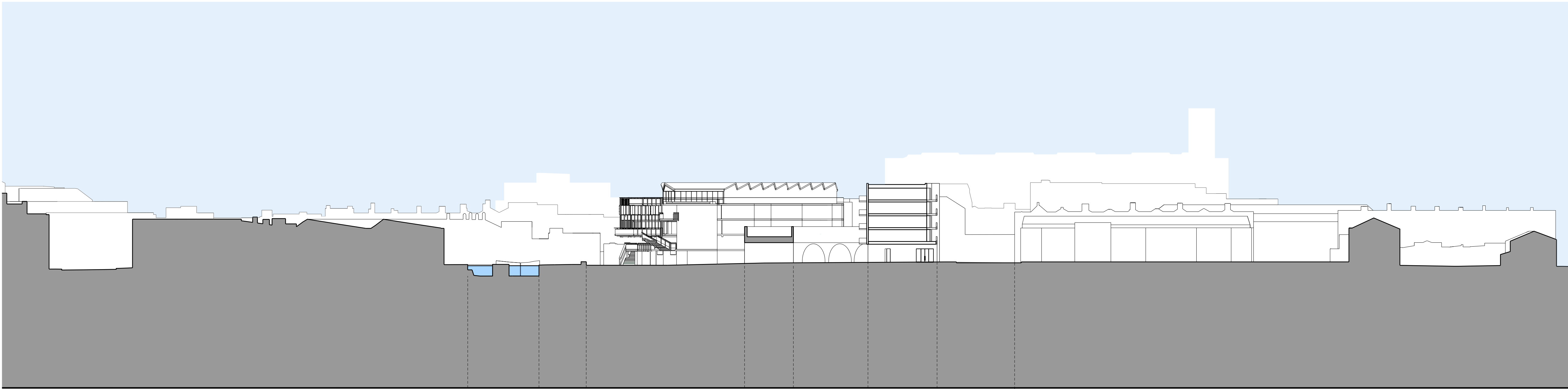


**ALLFORD HALL MONAGHAN MORRIS**  
ARCHITECTS Ltd  
2ND FLOOR, BLOCK C, 5-23 OLD STREET LONDON EC1V 9HL  
TEL 020 7251 5261 FAX 020 7251 5123 WEB WWW.AHMM.CO.UK

job title  
CAMDEN LOCK VILLAGE

drawing title / location  
PROPOSED VIADUCT DETAIL -  
TYPICAL BAY SOUTH - AREA A

drawn by DC	checked WL	scale 1:50@A1; 1:100@A3		status PLANNING		
project		zone	source	classification	drawing no.	revision
12001		MP		[00]	210	-



Regents Canal

Tow path

Market space

viaduct

Local space

Area C Building C1

Castlehaven Road

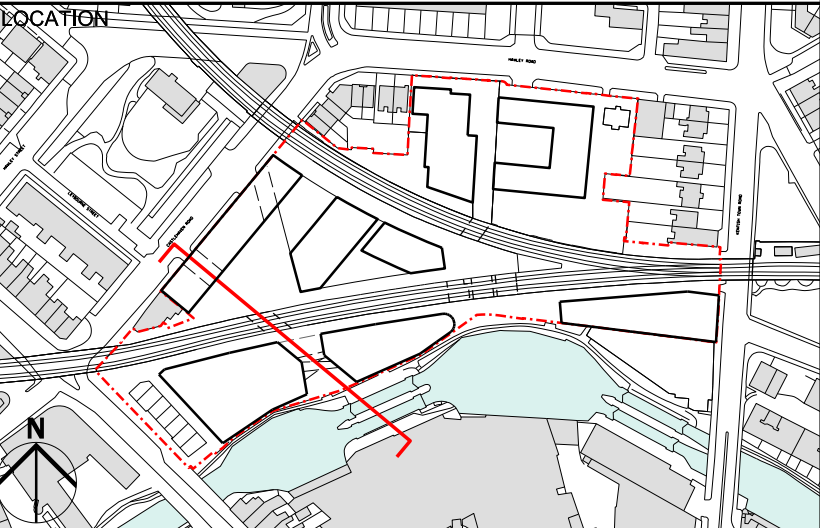
KEY / NOTES

- 31/08/12 PLANNING ISSUE

REV DATE

NOTE

1. Do not scale from this drawing, other than for Planning purposes.
2. All dimensions to be checked on site by the contractor and such dimensions to be his responsibility.
3. Report all drawing errors, omissions and discrepancies to the architect.
4. This document may be issued in an uncontrolled CAD format to enable others to use it as background information to make alterations and/or additions. In that instance the file will be accompanied by a PDF version. It is for those making such alterations and additions to ensure that they make use of current background information. AHMM Ltd accepts no liability for any such alterations or additions to the background information or arising out of changes to background information which occur prior to alterations of additions being made.



**ALLFORD HALL MONAGHAN MORRIS**

ARCHITECTS Ltd  
2ND FLOOR, BLOCK C, 5-23 OLD STREET LONDON EC1V 9HL  
TEL 020 7251 5261 FAX 020 7251 5123 WEB WWW.AHMM.CO.UK

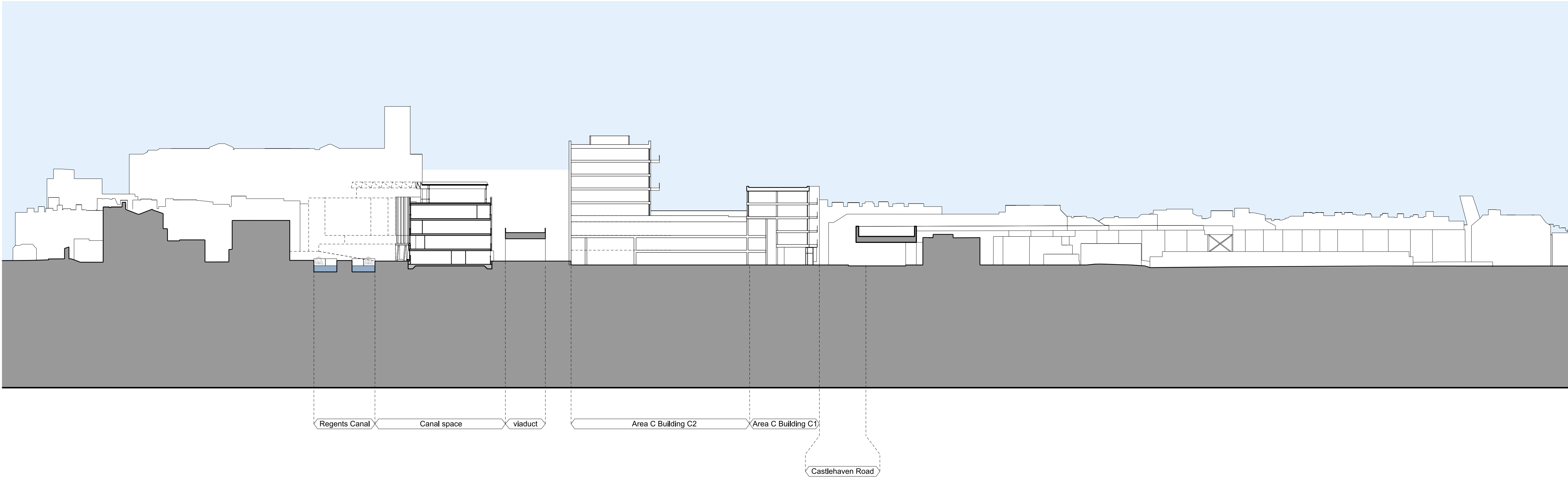
job title  
CAMDEN LOCK VILLAGE

drawing title / location  
PROPOSED MASTERPLAN SECTION  
AA (THROUGH HAVEN STREET)

drawn by	checked	scale	status
DC	WL	1:500@A1; 1:1000@A3	PLANNING

project	zone	source	classification	drawing no.	revision
12001	MP		[00]	300	-





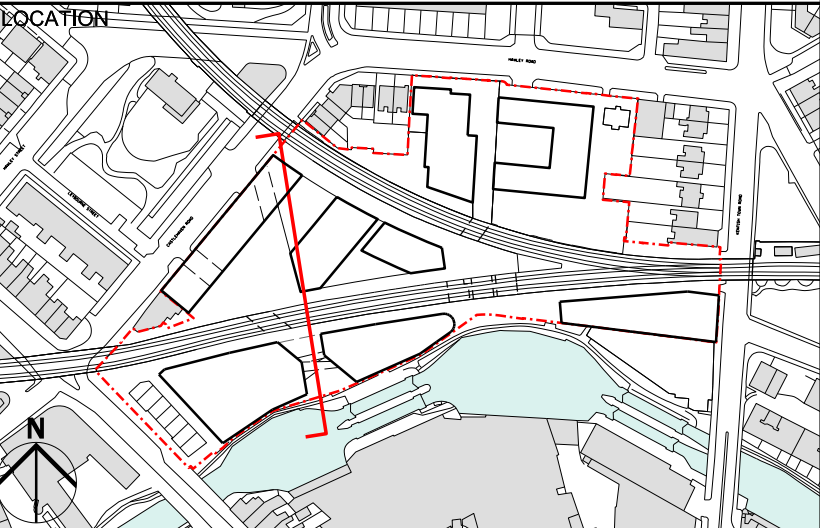
KEY / NOTES

- 31/08/12 PLANNING ISSUE

REV DATE

NOTE

1. Do not scale from this drawing, other than for Planning purposes.
2. All dimensions to be checked on site by the contractor and such dimensions to be his responsibility.
3. Report all drawing errors, omissions and discrepancies to the architect.
4. This document may be issued in an uncontrolled CAD format to enable others to use it as background information to make alterations and/or additions. In that instance the file will be accompanied by a PDF version. It is for those making such alterations and additions to ensure that they make use of current background information. AHMM Ltd accepts no liability for any such alterations or additions to the background information or arising out of changes to background information which occur prior to alterations of additions being made.



**ALLFORD HALL MONAGHAN MORRIS**

ARCHITECTS Ltd  
2ND FLOOR, BLOCK C, 5-23 OLD STREET LONDON EC1V 9HL  
TEL 020 7251 5261 FAX 020 7251 5123 WEB WWW.AHMM.CO.UK

job title  
CAMDEN LOCK VILLAGE

drawing title / location  
PROPOSED MASTERPLAN SECTION  
BB (N-S THROUGH SITES C + A)

drawn by	checked	scale	status
DC	WL	1:500@A1; 1:1000@A3	PLANNING

project	zone	source	classification	drawing no.	revision
12001	MP		[00]	301	-