

NOTES / SPECIFICATION

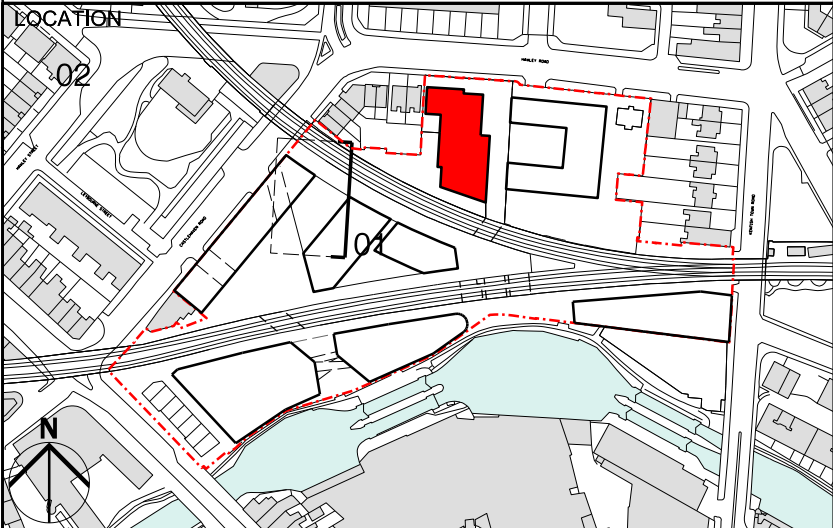
- [A] LAPPED CLAY TILE CLADDING  
[B] POWDER COATED PRESSED METAL WINDOW SURROUNDS  
[C] TRANSLUCENT GLAZED BALUSTRADE TO BALCONY  
[D] PRECAST CONCRETE BALCONY UPSTAND  
[E] BRICKWORK  
[F] TRANSLUCENT GLAZED WINDOW PANEL  
[G] POWDER COATED METAL WINDOW FRAMES



01 EAST ELEVATION

- xx/09/12 PLANNING ISSUE

NOTE  
1. Do not scale from this drawing, other than for Planning purposes.  
2. All dimensions to be checked on site by the contractor and such dimensions to be his responsibility.  
3. Report all drawing errors, omissions and discrepancies to the architect.  
4. This document may be issued in an uncontrolled CAD format to enable others to use it as background information to make alterations and/or additions. In that instance the file will be accompanied by a PDF version. It is for those making such alterations and additions to ensure that they make use of current background information. AHMM Ltd accepts no liability for any such alterations or additions to the background information or arising out of changes to background information which occur prior to alterations of additions being made.



**ALLFORD HALL MONAGHAN MORRIS**  
ARCHITECTS Ltd  
2ND FLOOR, BLOCK C, 5-23 OLD STREET LONDON EC1V 9HL  
TEL 020 7251 5261 FAX 020 7251 5123 WEB WWW.AHMM.CO.UK

job title  
CAMDEN LOCK VILLAGE

drawing title / location  
BUILDING W+X  
PROPOSED BAY STUDIES

drawn by MM	checked WL	scale 1:50@A1; 1:100@A3		status PLANNING		
project		zone	source	classification	drawing no.	revision
12001		B		[00]	230	



KEY

Boundary of outline application

Boundary of Detailed Application for Change of Use and Detailed Listed Building Consent  
Please refer to drawings HR\_N1853\_001 to HR\_N1853\_018

Area below ground level is excluded from Outline Application Boundary  
For details of this area please see Drawing Number 2765-SK016

Existing Buildings within Boundary

B31/08/12Issued for planning

A16/08/12Issued for information

-27/07/12Issued for information

REV

DATE

NOTE

1. Do not scale from this drawing, other than for Planning purposes.  
2. All dimensions to be checked on site by the contractor and such dimensions to be his responsibility.  
3. Report all drawing errors, omissions and discrepancies to the architect.  
4. This document may be issued in an uncontrolled CAD format to enable others to use it as background information to make alterations and/or additions. In that instance the file will be accompanied by a PDF version. It is for those making such alterations and additions to ensure that they make use of current background information. AHMM Ltd accepts no liability for any such alterations or additions to the background information or arising out of changes to background information which occur prior to alterations of additions being made.

LOCATION

ALLFORD HALL MONAGHAN MORRIS

ARCHITECTS Ltd  
2ND FLOOR, BLOCK C, 5-23 OLD STREET LONDON EC1V 9HL  
TEL 020 7251 5261 FAX 020 7251 5123 WEB WWW.AHMM.CO.UK

job title

CAMDEN LOCK VILLAGE

drawing title / location

SITE BOUNDARY  
OUTLINE SCHOOL APPLICATION

drawn by

checked

scale

status

GS

LS

1:200@A1; 1:400@A3

PLANNING

project

zone

source

classification

drawing no.

revision

12001

B

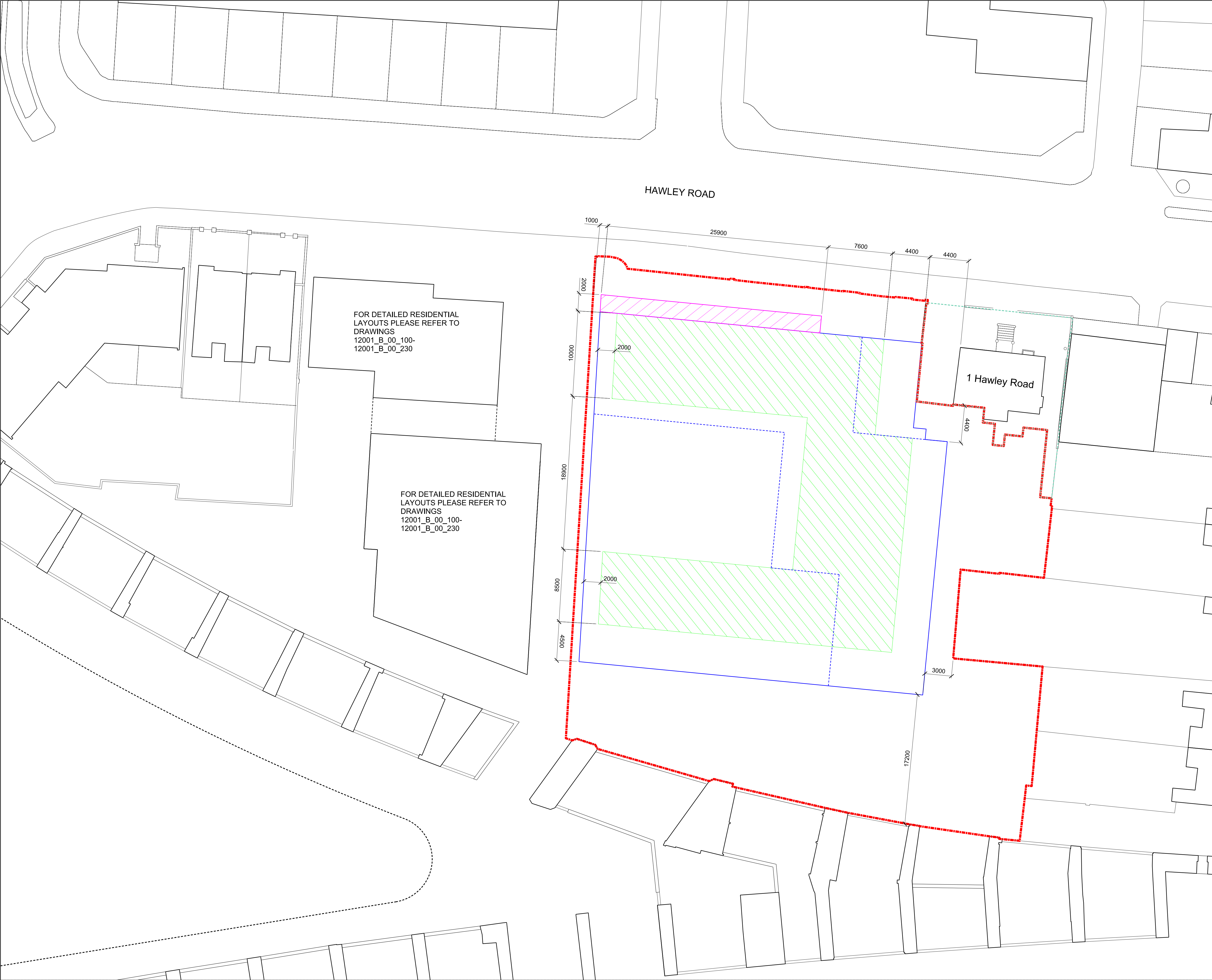
-

[00]

120

B





KEY

Boundary of outline application

Boundary of Detailed Application for Change of Use and Detailed Listed Building Consent. Please refer to drawings HR\_N1853\_001 to HR\_N1853\_018

Maximum Extents of Building Envelope

Maximum Extents of Building Envelope at Third Floor

Minimum Extents of Building Envelope

Maximum extents of building projection for facade articulation. The total width of the projections will be no greater than 1/2 of the width of the north elevation.

C

31/08/12

Issued for planning

B

16/08/12

Issued for information

A

03/08/12

Issued for information

-

27/07/12

Issued for information

REV

DATE

NOTE

1. Do not scale from this drawing, other than for Planning purposes.

2. All dimensions to be checked on site by the contractor and such dimensions to be his responsibility.

3. Report all drawing errors, omissions and discrepancies to the architect.

4. This document may be issued in an uncontrolled CAD format to enable others to use it as background information to make alterations and/or additions. In that instance the file will be accompanied by a PDF version. It is for those making such alterations and additions to ensure that they make use of current background information. AHMM Ltd accepts no liability for any such alterations or additions to the background information or arising out of changes to background information which occur prior to alterations of additions being made.

LOCATION

ALLFORD HALL MONAGHAN MORRIS

ARCHITECTS Ltd  
2ND FLOOR, BLOCK C, 5-23 OLD STREET LONDON EC1V 9HL  
TEL 020 7251 5261 FAX 020 7251 5123 WEB WWW.AHMM.CO.UK

job title

CAMDEN LOCK VILLAGE

drawing title / location

BUILDING SIZE AND LAYOUT  
OUTLINE SCHOOL APPLICATION

drawn by

checked

scale

status

GS

LS

1:200@A1; 1:400@A3

PLANNING

project

zone

source

classification

drawing no.

revision

12001

B

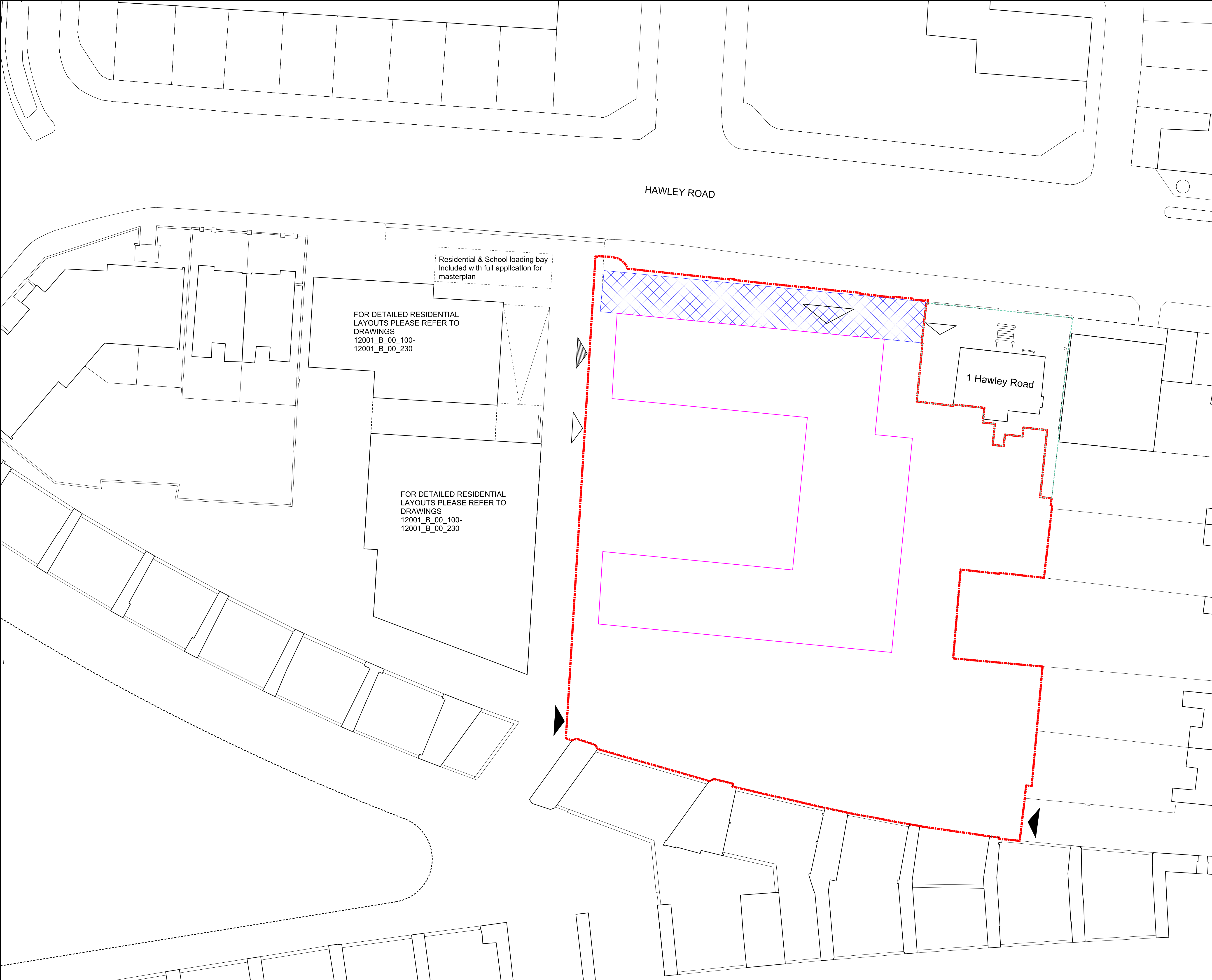
-

[00]

121

C





KEY

Boundary of outline application

Boundary of Detailed Application for Change of Use and Detailed Listed Building Consent  
Please refer to drawings HR\_N1853\_001 to HR\_N1853\_018

Extents of building envelope are illustrative only. For more information on maximum and minimum extents of building envelope please refer to drawing 12001\_B\_00\_121\_C

Zone for disabled parking

Pedestrian Access

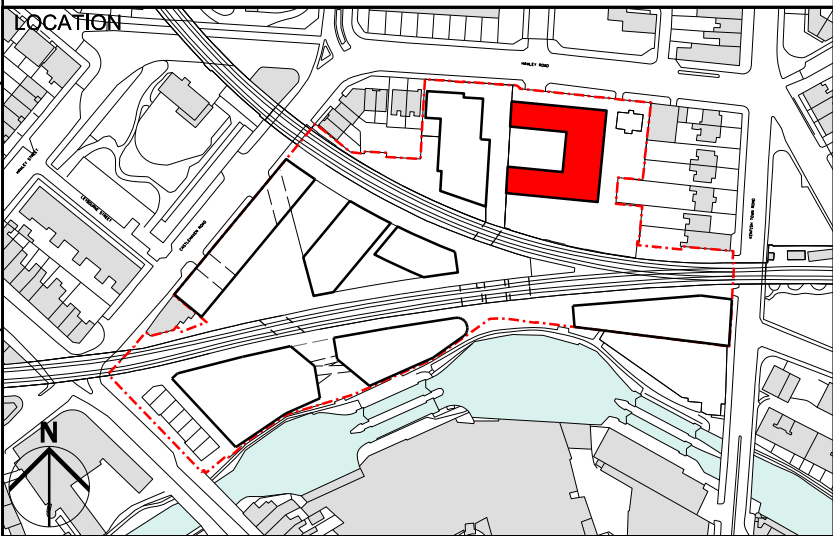
Vehicular/Service Access

Service Entry Point

B 31/08/12 Issued for planning	
A 16/08/12 Issued for information	
- 27/07/12 Issued for information	
REV	DATE

NOTE

1. Do not scale from this drawing, other than for Planning purposes.  
2. All dimensions to be checked on site by the contractor and such dimensions to be his responsibility.  
3. Report all drawing errors, omissions and discrepancies to the architect.  
4. This document may be issued in an uncontrolled CAD format to enable others to use it as background information to make alterations and/or additions. In that instance the file will be accompanied by a PDF version. It is for those making such alterations and additions to ensure that they make use of current background information. AHMM Ltd accepts no liability for any such alterations or additions to the background information or arising out of changes to background information which occur prior to alterations of additions being made.



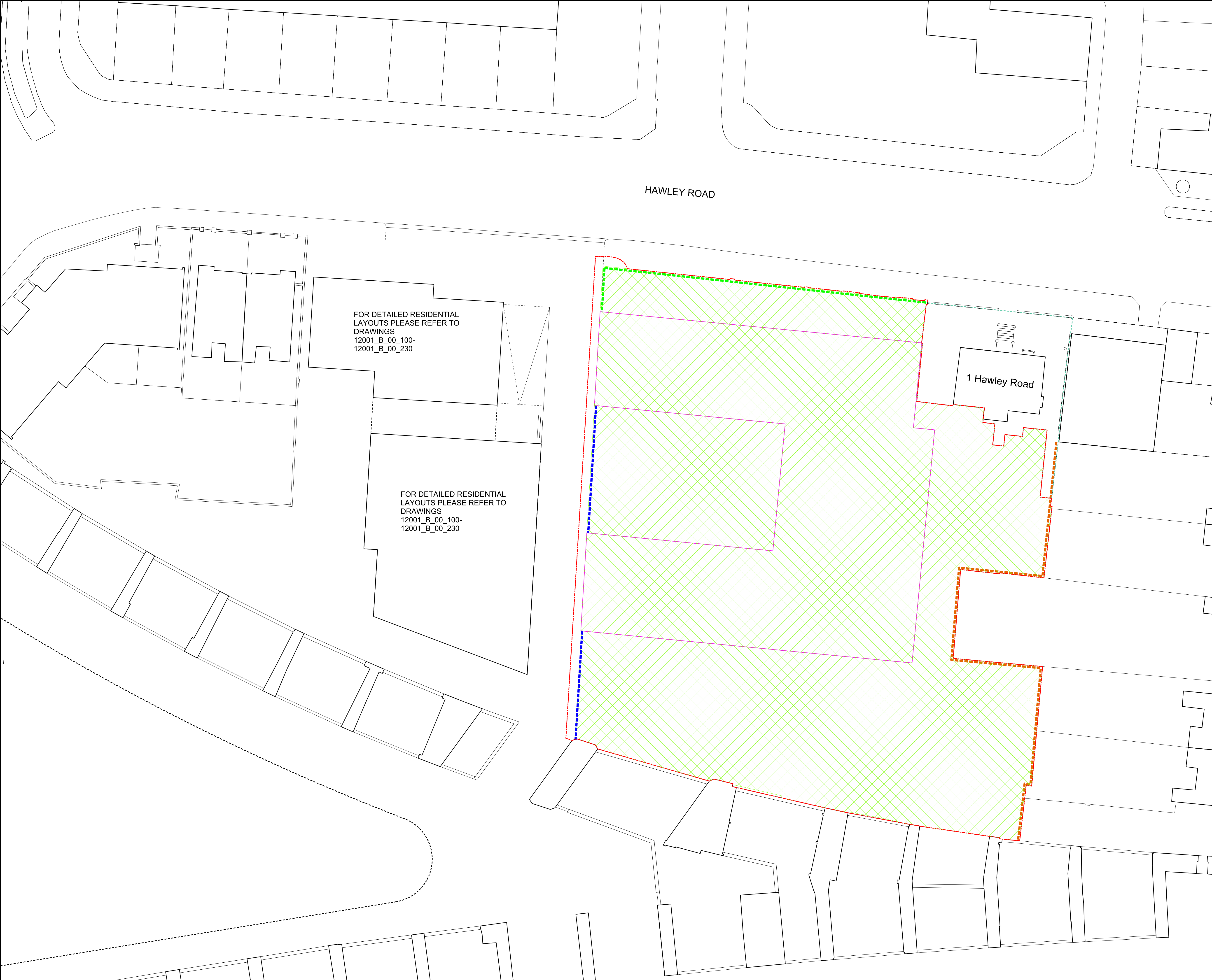
**ALLFORD HALL MONAGHAN MORRIS**  
ARCHITECTS Ltd  
2ND FLOOR, BLOCK C, 5-23 OLD STREET LONDON EC1V 9HL  
TEL 020 7251 5261 FAX 020 7251 5123 WEB WWW.AHMM.CO.UK

job title  
CAMDEN LOCK VILLAGE

drawing title / location  
VEHICULAR & PEDESTRIAN ACCESS  
OUTLINE SCHOOL APPLICATION

drawn by	checked	scale	status		
GS	LS	1:200@A1; 1:400@A3	PLANNING		
project	zone	source	classification	drawing no.	revision
12001	B	-	[00]	122	B





FOR DETAILED RESIDENTIAL  
LAYOUTS PLEASE REFER TO  
DRAWINGS  
12001\_B\_00\_100-  
12001\_B\_00\_230

FOR DETAILED RESIDENTIAL  
LAYOUTS PLEASE REFER TO  
DRAWINGS  
12001\_B\_00\_100-  
12001\_B\_00\_230

HAWLEY ROAD

1 Hawley Road

Boundary of outline application

Boundary of Detailed Application  
for Change of Use and Detailed  
Listed Building Consent  
Please refer to drawings  
HR\_N1853\_001 to HR\_N1853\_018

Extents of building envelope are  
illustrative only. For more information  
on maximum and minimum extents of  
building envelope please refer to  
drawing 12001\_B[00]\_121 Rev C

Maximum extent of Play  
Space/Habitat/Float/Non-net Areas  
provided at ground & roof level

ELEVATION OF NORTHERN  
BOUNDARY ENCLOSURE  
nts

VISUALLY  
PERMEABLE  
ENCLOSURE

SOLID  
ENCLOSURE

MAX OVERALL  
HEIGHT  
2.4m

MAX SOLID  
HEIGHT  
1.2m

ELEVATION OF EASTERN  
BOUNDARY ENCLOSURE  
nts

VISUALLY  
PERMEABLE  
ENCLOSURE

SOLID  
ENCLOSURE

MAX OVERALL  
HEIGHT  
3.5m

MAX SOLID  
HEIGHT  
2.4m

ELEVATION OF WESTERN  
BOUNDARY ENCLOSURE  
nts

VISUALLY  
PERMEABLE  
ENCLOSURE

SOLID  
ENCLOSURE

MAX OVERALL  
HEIGHT  
3.5m

MAX SOLID  
HEIGHT  
1.5m

B  
A  
-

31/08/12  
16/08/12  
27/07/12

Issued for planning  
Issued for information  
Issued for information

REV

DATE

NOTE

1. Do not scale from this drawing, other than for Planning purposes.  
2. All dimensions to be checked on site by the contractor and such dimensions to be his responsibility.  
3. Report all drawing errors, omissions and discrepancies to the architect.  
4. This document may be issued in an uncontrolled CAD format to enable others to use it as background information to make alterations and/or additions. In that instance the file will be accompanied by a PDF version. It is for those making such alterations and additions to ensure that they make use of current background information.  
AHMM Ltd accepts no liability for any such alterations or additions to the background information or arising out of changes to background information which occur prior to alterations of additions being made.

LOCATION

ALLFORD HALL MONAGHAN MORRIS

ARCHITECTS Ltd  
2ND FLOOR, BLOCK C, 5-23 OLD STREET LONDON EC1V 9HL  
TEL 020 7251 5261 FAX 020 7251 5123 WEB WWW.AHMM.CO.UK

job title

CAMDEN LOCK VILLAGE

drawing title / location

LANDSCAPE AND AMENITY  
OUTLINE SCHOOL APPLICATION

drawn by  
GS

checked  
LS

scale  
1:200@A1; 1:400@A3

status  
PLANNING

project  
12001

zone  
B

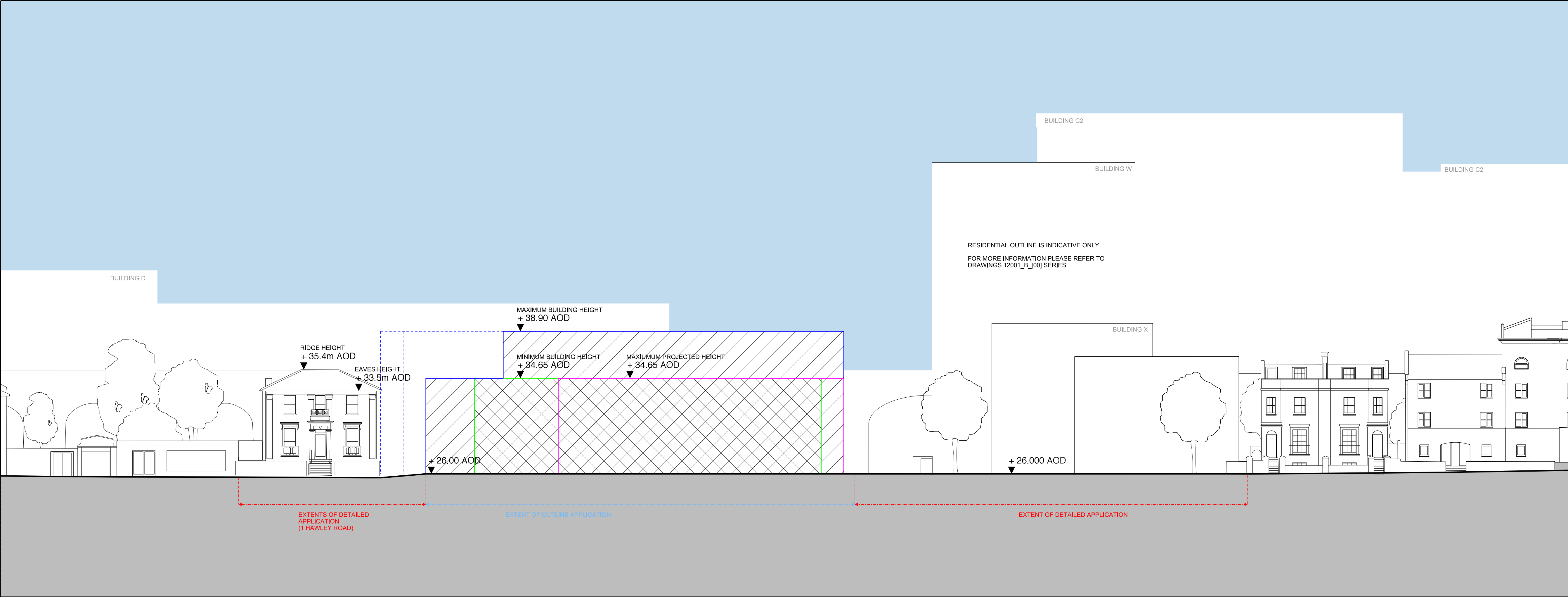
source  
-

classification  
(00)

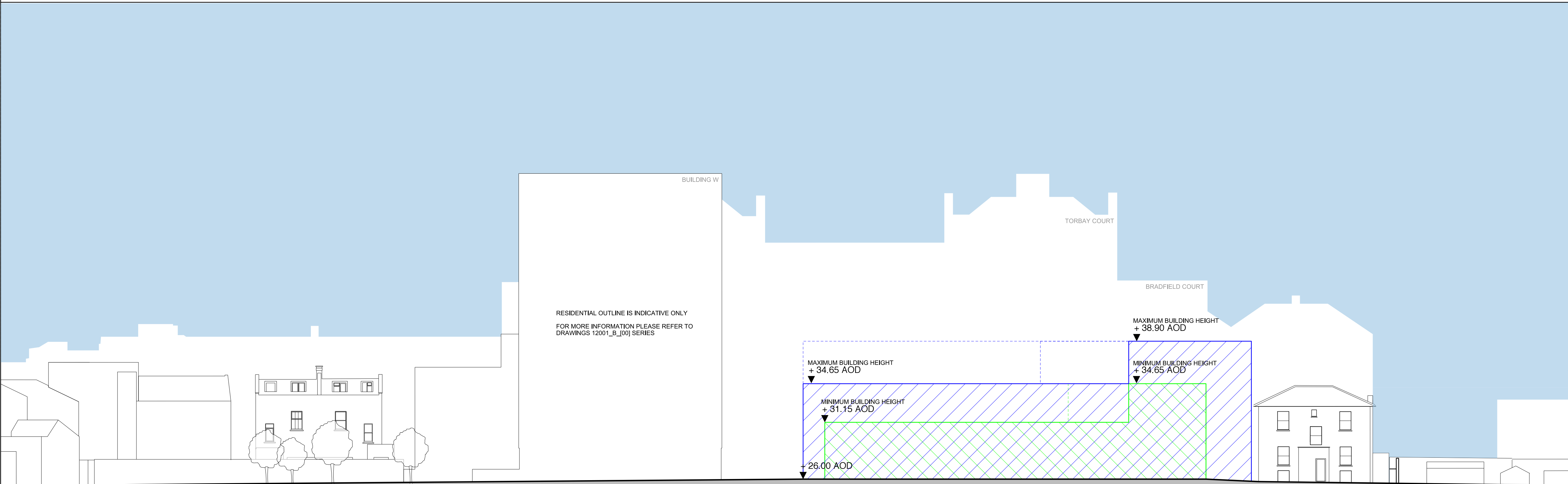
drawing no.  
123

revision  
B





01 NORTH ELEVATION



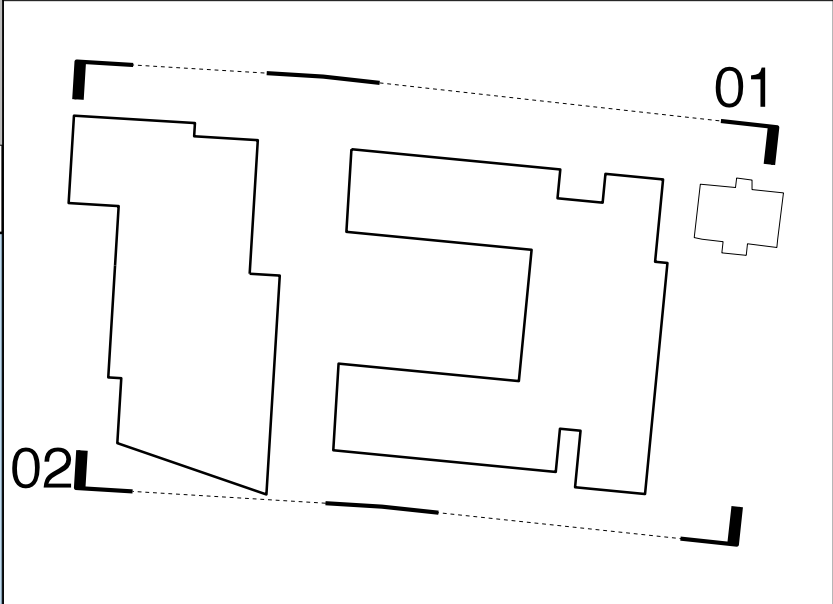
02 SOUTH ELEVATION

NOTES -

Siting of building is indicative only. For further information relating to maximum and minimum extents please refer to drawing 12001\_B\_[00]\_121

For information relating to boundary enclosure please refer to drawing 12001\_B\_[00]\_123

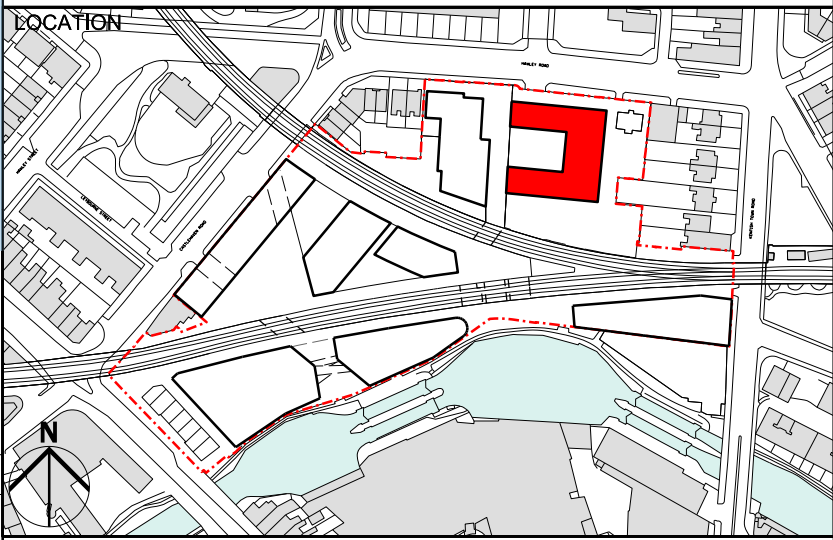
- Maximum Extents to Elevation of School Building
- Minimum Extents to Elevation of School Building
- Maximum Extents of Building Projection
- Maximum Extents of East Block of School Building
- Minimum Extents of East Block of School Building



REV	DATE	
C	31/08/12	Issued for planning
B	16/08/12	Issued for information
A	03/08/12	Issued for information
-	27/07/12	Issued for information

NOTE

1. Do not scale from this drawing, other than for Planning purposes.
2. All dimensions to be checked on site by the contractor and such dimensions to be his responsibility.
3. Report all drawing errors, omissions and discrepancies to the architect.
4. This document may be issued in an uncontrolled CAD format to enable others to use it as background information to make alterations and/or additions. In that instance the file will be accompanied by a PDF version. It is for those making such alterations and additions to ensure that they make use of current background information. AHMM Ltd accepts no liability for any such alterations or additions to the background information or arising out of changes to background information which occur prior to alterations of additions being made.

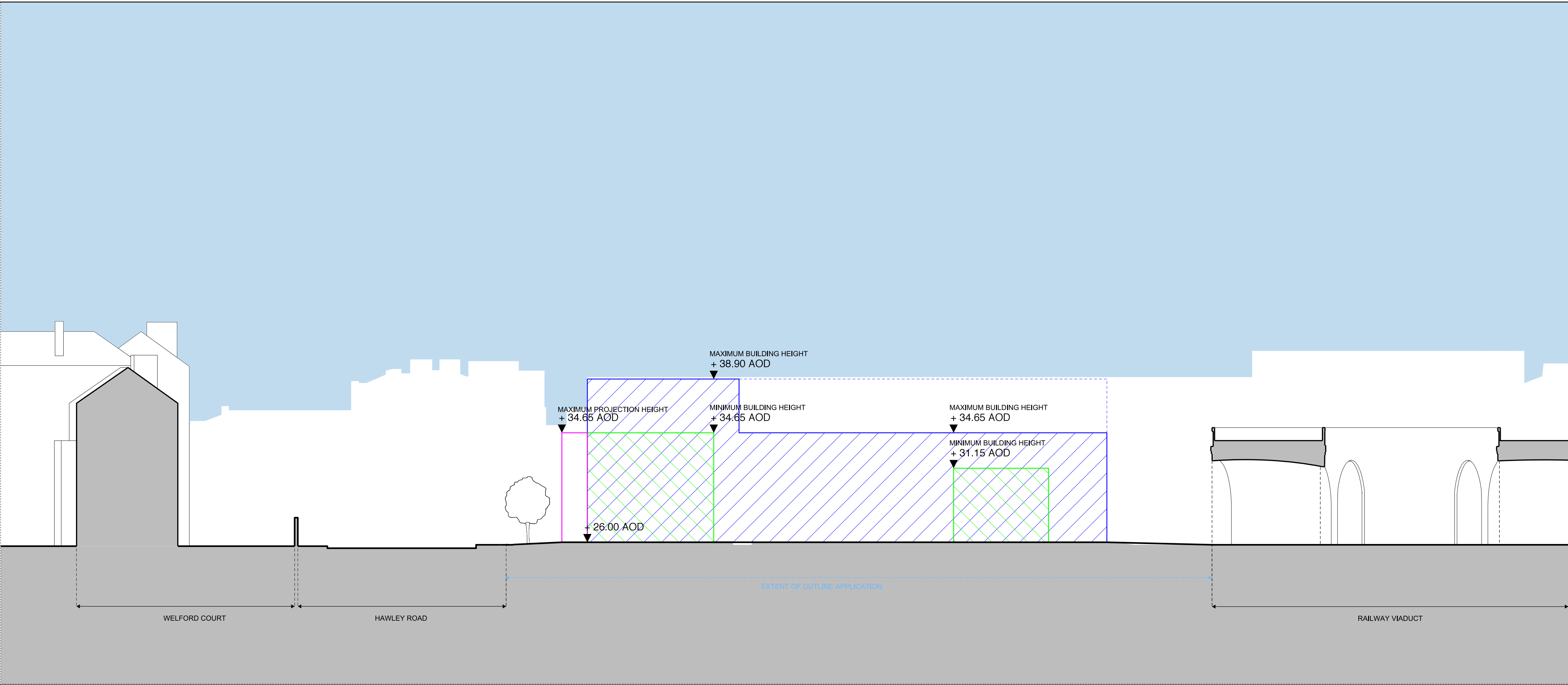


**ALLFORD HALL MONAGHAN MORRIS**  
ARCHITECTS Ltd  
2ND FLOOR, BLOCK C, 5-23 OLD STREET LONDON EC1V 9HL  
TEL 020 7251 5261 FAX 020 7251 5123 WEB WWW.AHMM.CO.UK

job title  
CAMDEN LOCK VILLAGE

drawing title / location  
BUILDING HEIGHTS - ELEVATIONS  
OUTLINE SCHOOL APPLICATION

drawn by	checked	scale	status		
GS	LS	1:200@A1; 1:400@A3	PLANNING		
project	zone	source	classification	drawing no.	revision
12001	B	-	(00)	220	C



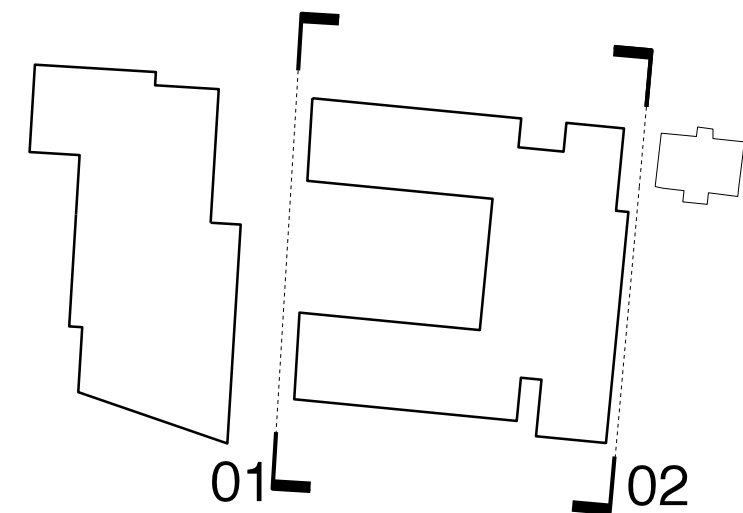
01 WEST ELEVATION



02 EAST ELEVATION

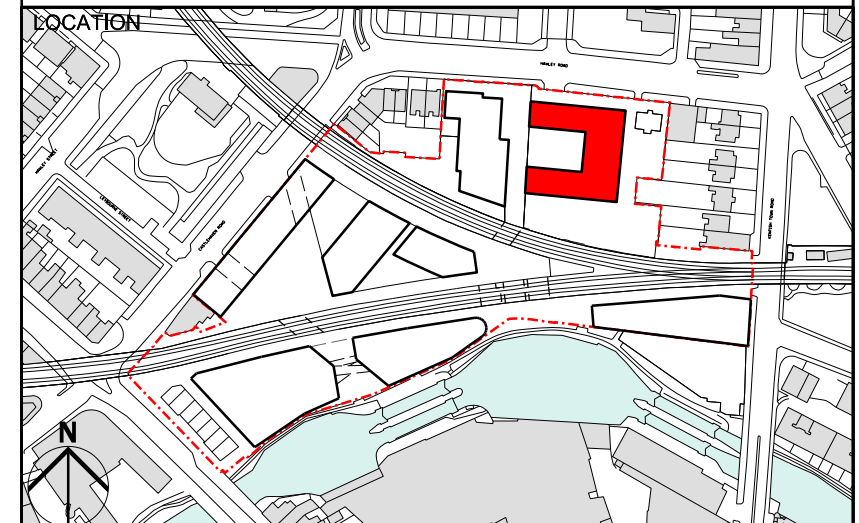
NOTES -  
Siting of building is indicative only. For further information relating to maximum and minimum extents please refer to drawing PP4401.  
For information relating to boundary enclosure please refer to drawing PP4404

- Maximum Extents to Elevation of School Building
- Minimum Extents to Elevation of School Building
- Maximum Extents of Building Projection
- Maximum Extents of East Block of School Building



REV	DATE	
C	31/08/12	Issued for planning
B	16/08/12	Issued for information
A	03/08/12	Issued for information
-	27/07/12	Issued for information

NOTE  
1. Do not scale from this drawing, other than for Planning purposes.  
2. All dimensions to be checked on site by the contractor and such dimensions to be his responsibility.  
3. Report all drawing errors, omissions and discrepancies to the architect.  
4. This document may be issued in an uncontrolled CAD format to enable others to use it as background information to make alterations and/or additions. In that instance the file will be accompanied by a PDF version. It is for those making such alterations and additions to ensure that they make use of current background information. AHMM Ltd accepts no liability for any such alterations or additions to the background information or arising out of changes to background information which occur prior to alterations of additions being made.



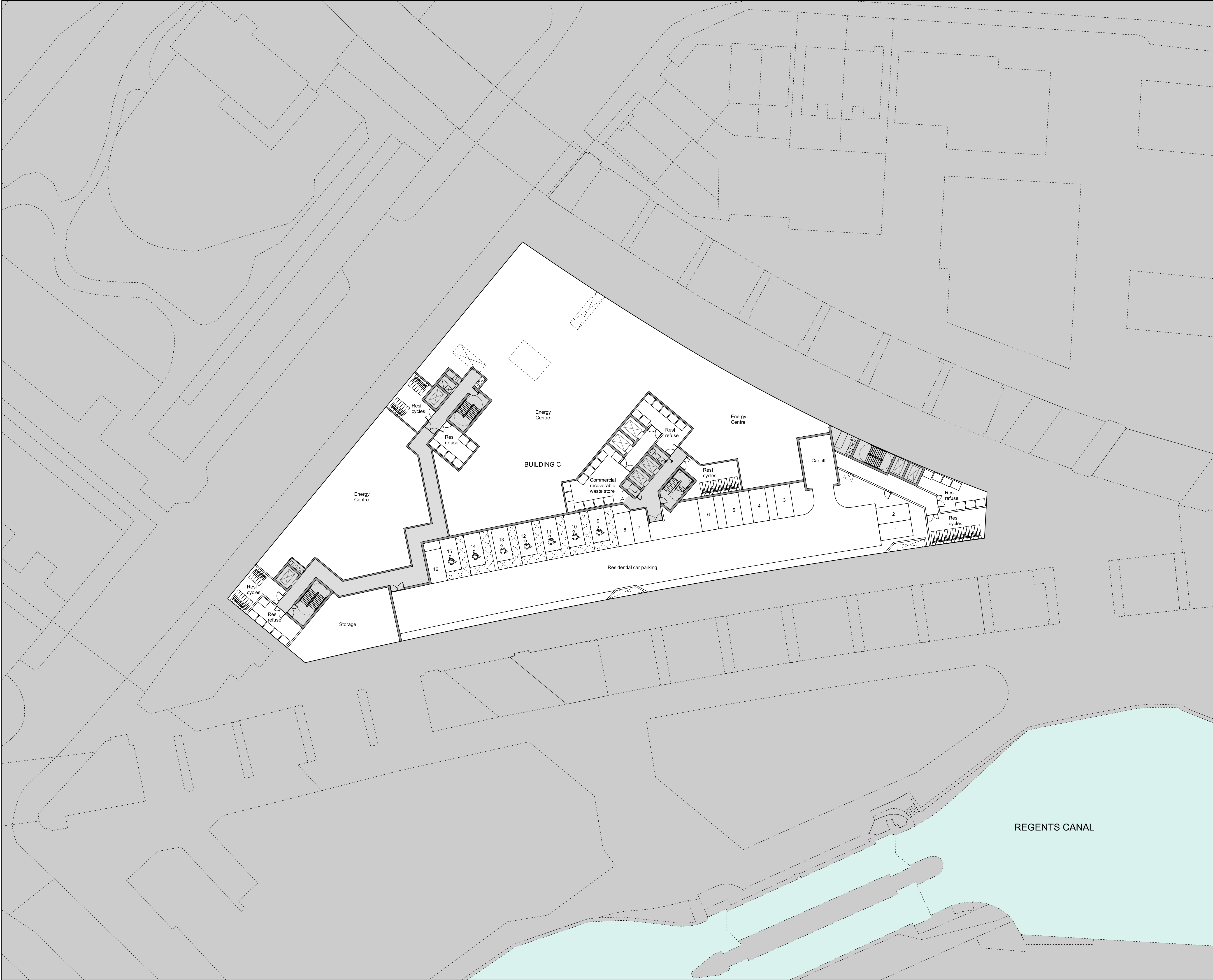
**ALLFORD HALL MONAGHAN MORRIS**  
ARCHITECTS Ltd  
2ND FLOOR, BLOCK C, 5-23 OLD STREET LONDON EC1V 9HL  
TEL 020 7251 5261 FAX 020 7251 5123 WEB WWW.AHMM.CO.UK

job title  
CAMDEN LOCK VILLAGE

drawing title / location  
BUILDING HEIGHTS - ELEVATIONS  
OUTLINE SCHOOL APPLICATION

drawn by	checked	scale	status	
GS	LS	1:200@A1; 1:400@A3	PLANNING	
project	zone	source	classification	drawing no. revision
12001	B	-	(00)	221 C





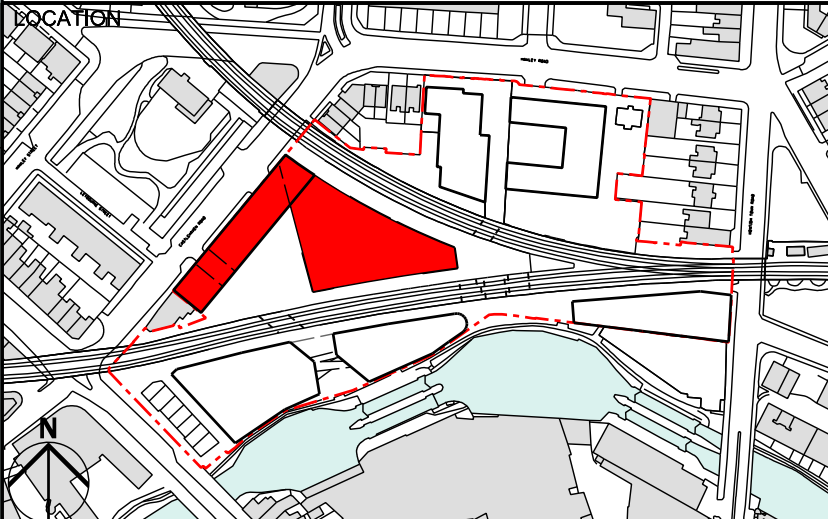
NOTE: INTERNAL LAYOUTS ARE INDICATIVE ONLY

-	31/08/12	PLANNING ISSUE
---	----------	----------------

REV	DATE
-----	------

NOTE

1. Do not scale from this drawing, other than for Planning purposes.
2. All dimensions to be checked on site by the contractor and such dimensions to be his responsibility.
3. Report all drawing errors, omissions and discrepancies to the architect.
4. This document may be issued in an uncontrolled CAD format to enable others to use it as background information to make alterations and/or additions. In that instance the file will be accompanied by a PDF version. It is for those making such alterations and additions to ensure that they make use of current background information. AHMM Ltd accepts no liability for any such alterations or additions to the background information or arising out of changes to background information which occur prior to alterations of additions being made.



**ALLFORD HALL MONAGHAN MORRIS**  
ARCHITECTS Ltd  
2ND FLOOR, BLOCK C, 5-23 OLD STREET LONDON EC1V 9HL  
TEL 020 7251 5261 FAX 020 7251 5123 WEB WWW.AHMM.CO.UK

job title  
CAMDEN LOCK VILLAGE

drawing title / location  
BUILDING C  
PROPOSED LOWER BASEMENT

drawn by	checked	scale	status
DF	WL	1:250@A1; 1:500@A3	PLANNING

project	zone	classification	drawing no.	revision
12001	C	[00]	098	-



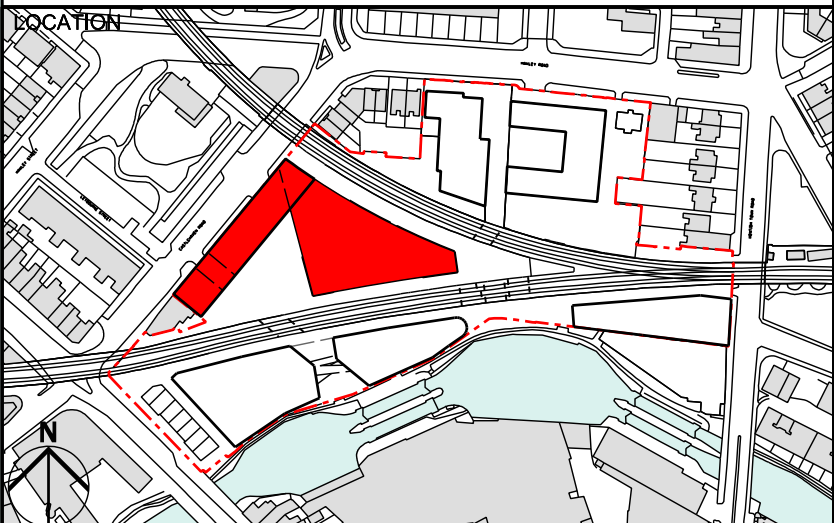


NOTE: INTERNAL LAYOUTS ARE INDICATIVE ONLY

REV	DATE
-	31/08/12 PLANNING ISSUE

NOTE

1. Do not scale from this drawing, other than for Planning purposes.
2. All dimensions to be checked on site by the contractor and such dimensions to be his responsibility.
3. Report all drawing errors, omissions and discrepancies to the architect.
4. This document may be issued in an uncontrolled CAD format to enable others to use it as background information to make alterations and/or additions. In that instance the file will be accompanied by a PDF version. It is for those making such alterations and additions to ensure that they make use of current background information. AHMM Ltd accepts no liability for any such alterations or additions to the background information or arising out of changes to background information which occur prior to alterations of additions being made.



**ALLFORD HALL MONAGHAN MORRIS**  
ARCHITECTS Ltd  
2ND FLOOR, BLOCK C, 5-23 OLD STREET LONDON EC1V 9HL  
TEL 020 7251 5261 FAX 020 7251 5123 WEB WWW.AHMM.CO.UK

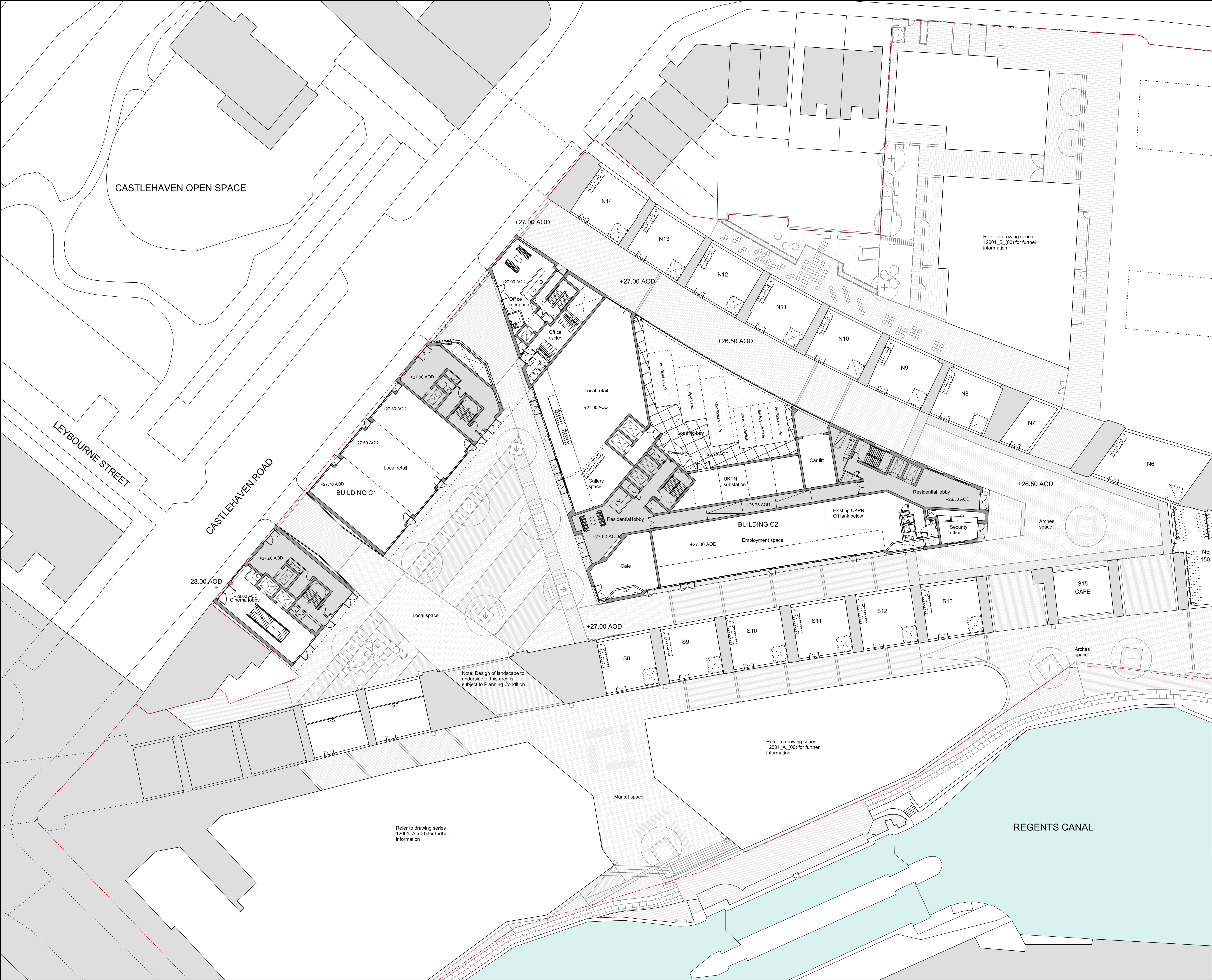
job title  
CAMDEN LOCK VILLAGE

drawing title / location  
BUILDING C  
PROPOSED UPPER BASEMENT

drawn by	checked	scale	status
DF	WL	1:250@A1; 1:500@A3	PLANNING

project	zone	classification	drawing no.	revision
12001	C	[00]	099	-



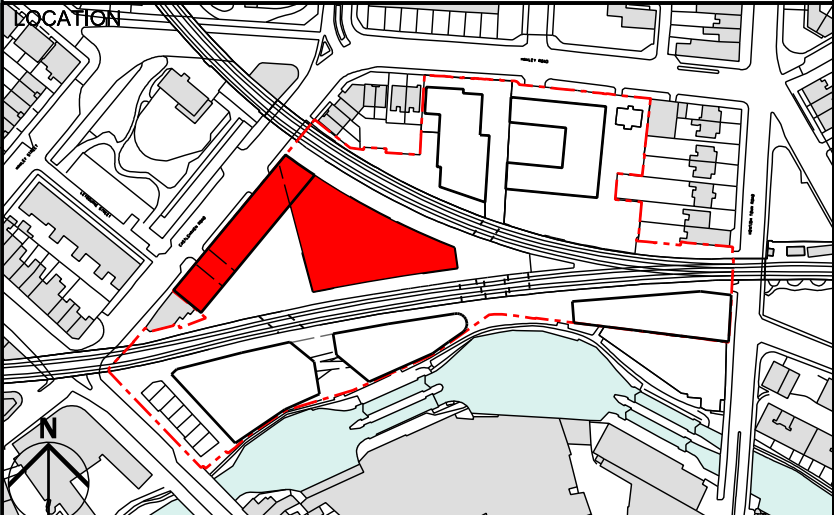


NOTE: INTERNAL LAYOUTS ARE INDICATIVE ONLY

-	31/08/12	PLANNING ISSUE
---	----------	----------------

REV	DATE
-----	------

- NOTE
1. Do not scale from this drawing, other than for Planning purposes.
  2. All dimensions to be checked on site by the contractor and such dimensions to be his responsibility.
  3. Report all drawing errors, omissions and discrepancies to the architect.
  4. This document may be issued in an uncontrolled CAD format to enable others to use it as background information to make alterations and/or additions. In that instance the file will be accompanied by a PDF version. It is for those making such alterations and additions to ensure that they make use of current background information. AHMM Ltd accepts no liability for any such alterations or additions to the background information or arising out of changes to background information which occur prior to alterations or additions being made.



**ALLFORD HALL MONAGHAN MORRIS**  
ARCHITECTS Ltd  
2ND FLOOR, BLOCK C, 5-23 OLD STREET LONDON EC1V 9HL  
TEL 020 7251 5261 FAX 020 7251 5123 WEB WWW.AHMM.CO.UK

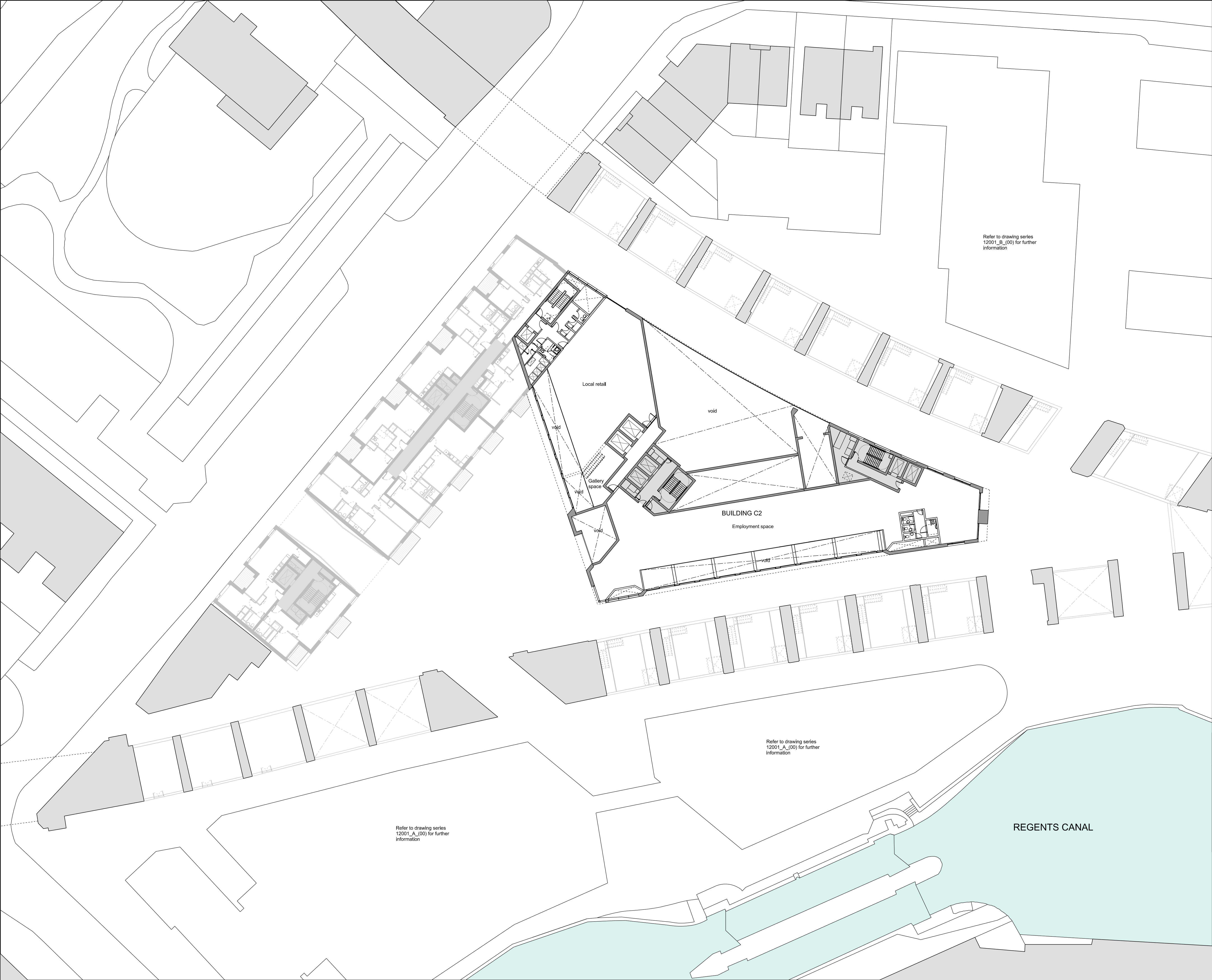
job title  
CAMDEN LOCK VILLAGE

drawing title / location  
BUILDING C  
PROPOSED GROUND FLOOR

drawn by	checked	scale	status
DF	WL	1:250@A1; 1:500@A3	PLANNING

project	zone	classification	drawing no.	revision
12001	C	[00]	100	-





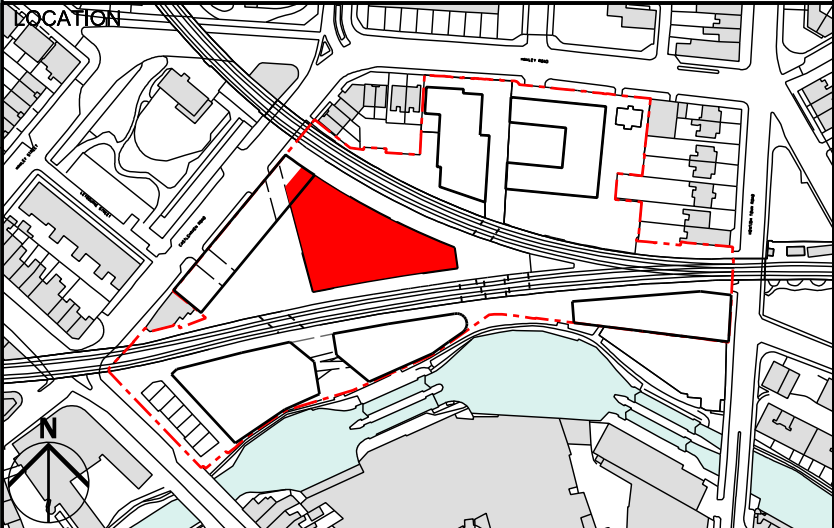
NOTE: INTERNAL LAYOUTS ARE INDICATIVE ONLY

-	31/08/12 PLANNING ISSUE
---	-------------------------

REV	DATE
-----	------

NOTE

1. Do not scale from this drawing, other than for Planning purposes.
2. All dimensions to be checked on site by the contractor and such dimensions to be his responsibility.
3. Report all drawing errors, omissions and discrepancies to the architect.
4. This document may be issued in an uncontrolled CAD format to enable others to use it as background information to make alterations and/or additions. In that instance the file will be accompanied by a PDF version. It is for those making such alterations and additions to ensure that they make use of current background information. AHMM Ltd accepts no liability for any such alterations or additions to the background information or arising out of changes to background information which occur prior to alterations of additions being made.



**ALLFORD HALL MONAGHAN MORRIS**  
ARCHITECTS Ltd  
2ND FLOOR, BLOCK C, 5-23 OLD STREET LONDON EC1V 9HL  
TEL 020 7251 5261 FAX 020 7251 5123 WEB WWW.AHMM.CO.UK

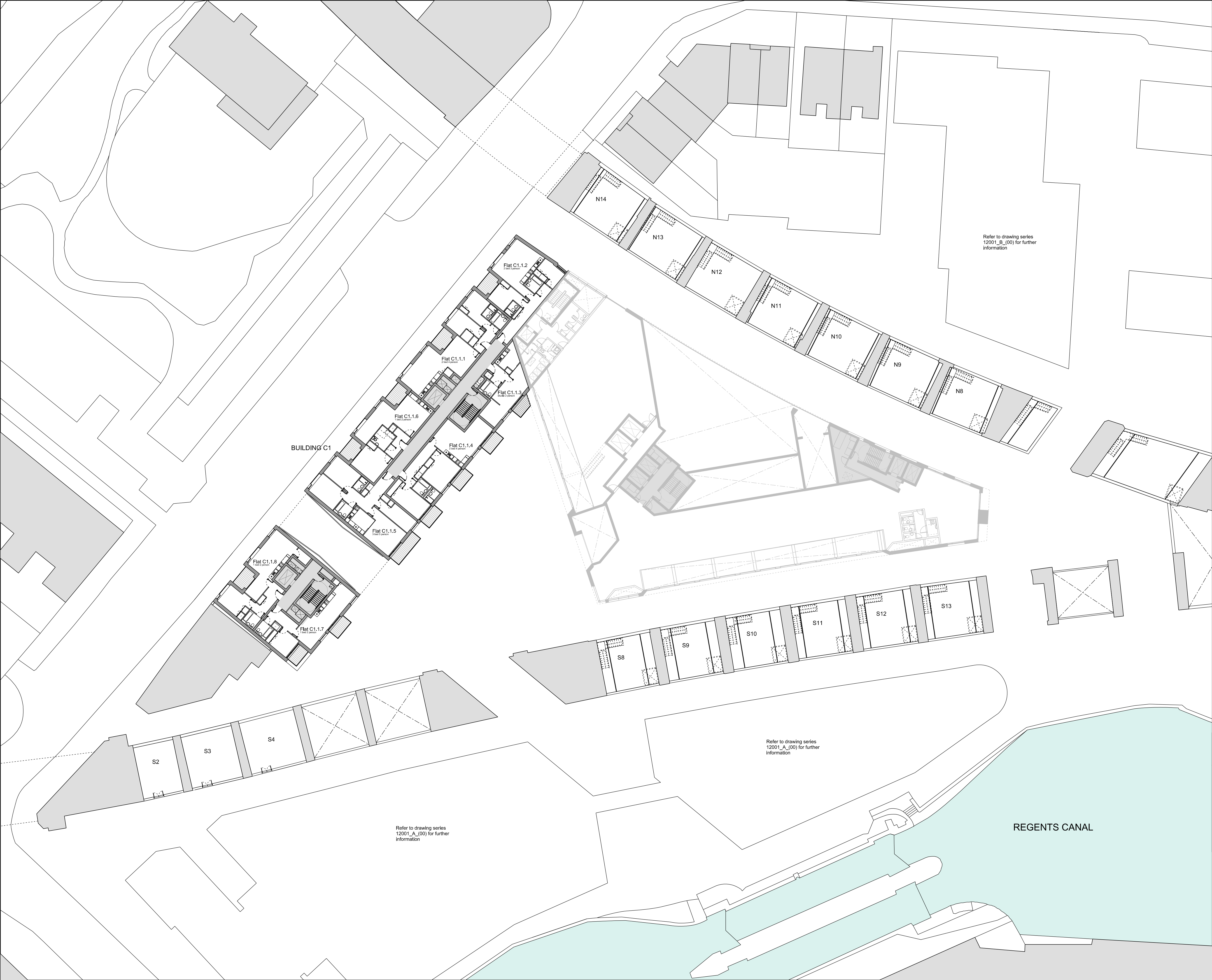
job title  
CAMDEN LOCK VILLAGE

drawing title / location  
BUILDING C  
PROPOSED BUILDING C2 MEZZANINE

drawn by	checked	scale	status
DF	WL	1:250@A1; 1:500@A3	PLANNING

project	zone	classification	drawing no.	revision
12001	C	[00]	101	-



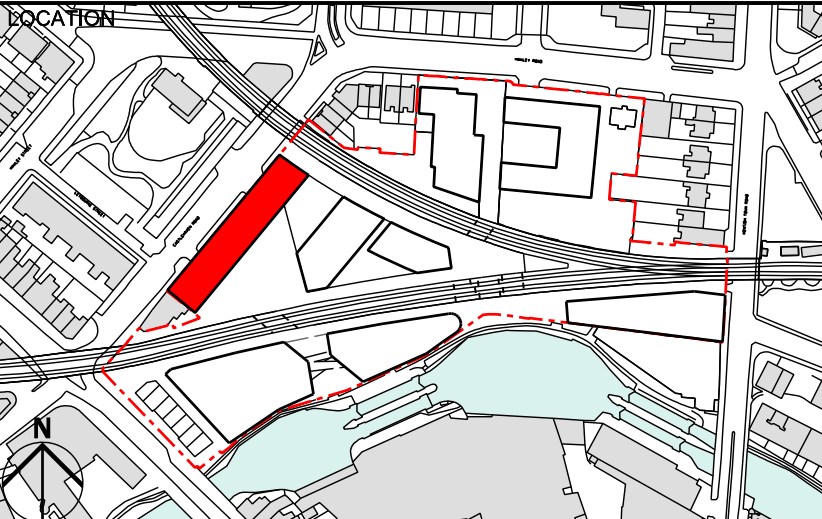


NOTE: INTERNAL LAYOUTS ARE INDICATIVE ONLY

-	31/08/12	PLANNING ISSUE
---	----------	----------------

REV	DATE
-----	------

- NOTE
1. Do not scale from this drawing, other than for Planning purposes.
  2. All dimensions to be checked on site by the contractor and such dimensions to be his responsibility.
  3. Report all drawing errors, omissions and discrepancies to the architect.
  4. This document may be issued in an uncontrolled CAD format to enable others to use it as background information to make alterations and/or additions. In that instance the file will be accompanied by a PDF version. It is for those making such alterations and additions to ensure that they make use of current background information. AHMM Ltd accepts no liability for any such alterations or additions to the background information or arising out of changes to background information which occur prior to alterations of additions being made.



**ALLFORD HALL MONAGHAN MORRIS**  
ARCHITECTS Ltd  
2ND FLOOR, BLOCK C, 5-23 OLD STREET LONDON EC1V 9HL  
TEL 020 7251 5261 FAX 020 7251 5123 WEB WWW.AHMM.CO.UK

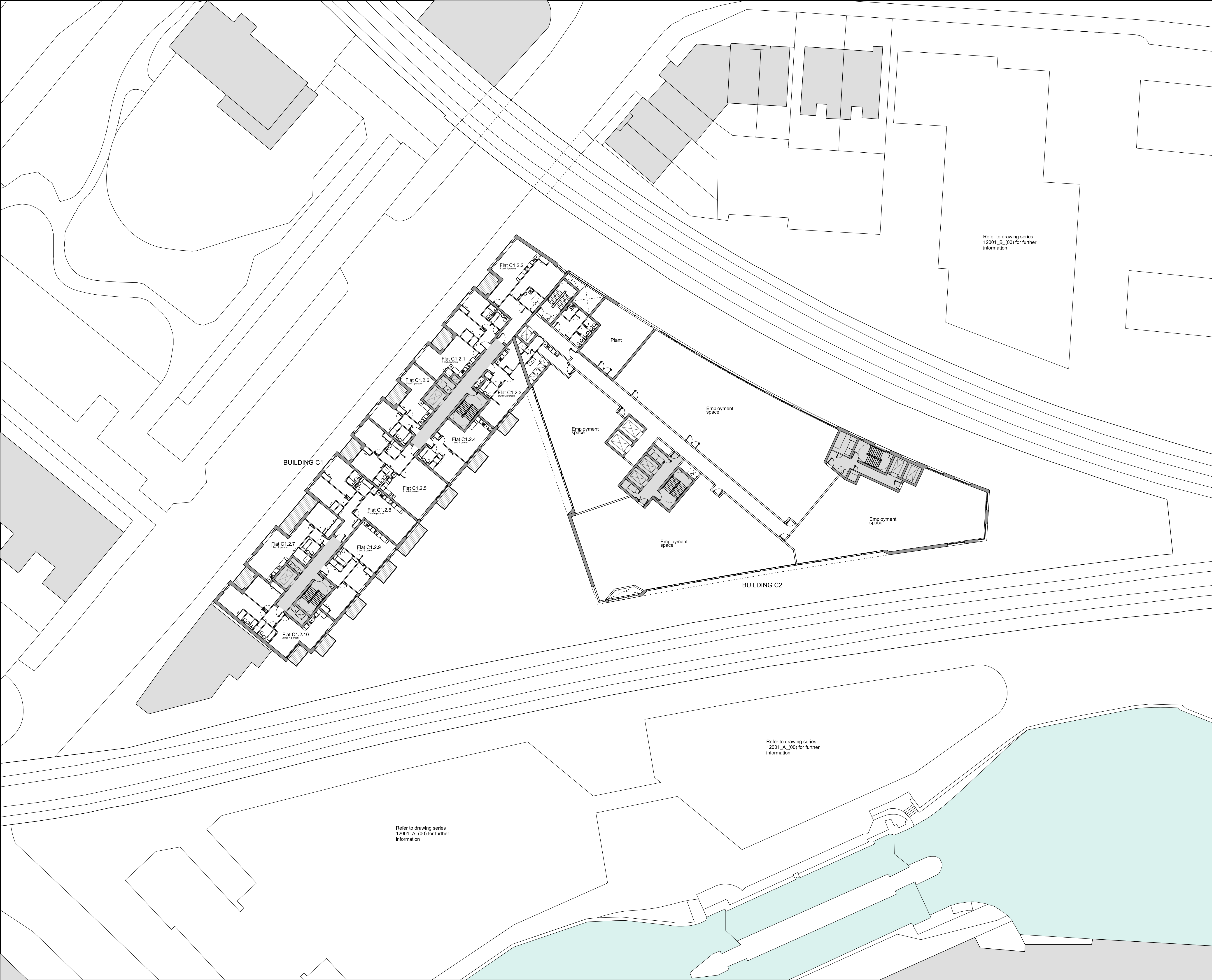
job title  
CAMDEN LOCK VILLAGE

drawing title / location  
BUILDING C  
PROPOSED BUILDING C1 FIRST FLOOR PLAN

drawn by	checked	scale	status
DF	WL	1:250@A1; 1:500@A3	PLANNING

project	zone	classification	drawing no.	revision
12001	C	[00]	102	-



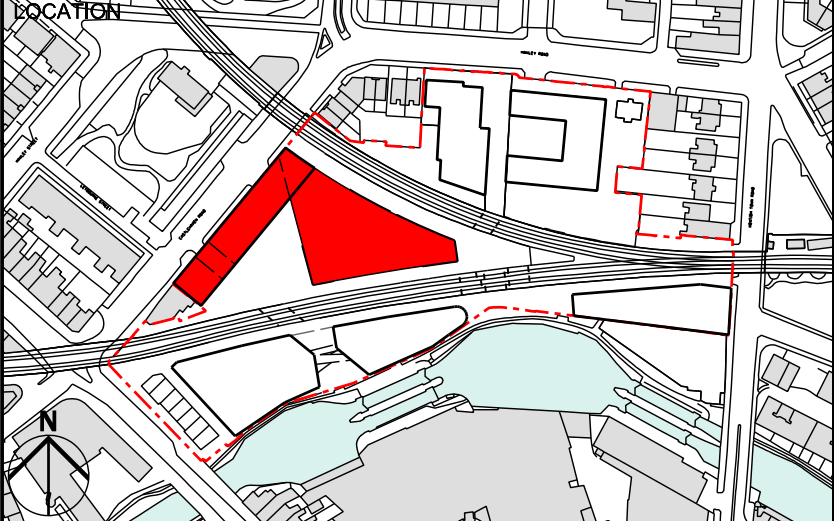


NOTE: INTERNAL LAYOUTS ARE INDICATIVE ONLY

-	31/08/12 PLANNING ISSUE
---	-------------------------

REV	DATE
-----	------

NOTE  
1. Do not scale from this drawing, other than for Planning purposes.  
2. All dimensions to be checked on site by the contractor and such dimensions to be his responsibility.  
3. Report all drawing errors, omissions and discrepancies to the architect.  
4. This document may be issued in an uncontrolled CAD format to enable others to use it as background information to make alterations and/or additions. In that instance the file will be accompanied by a PDF version. It is for those making such alterations and additions to ensure that they make use of current background information. AHMM Ltd accepts no liability for any such alterations or additions to the background information or arising out of changes to background information which occur prior to alterations or additions being made.



**ALLFORD HALL MONAGHAN MORRIS**  
ARCHITECTS Ltd  
2ND FLOOR, BLOCK C, 5-23 OLD STREET LONDON EC1V 9HL  
TEL 020 7251 5261 FAX 020 7251 5123 WEB WWW.AHMM.CO.UK

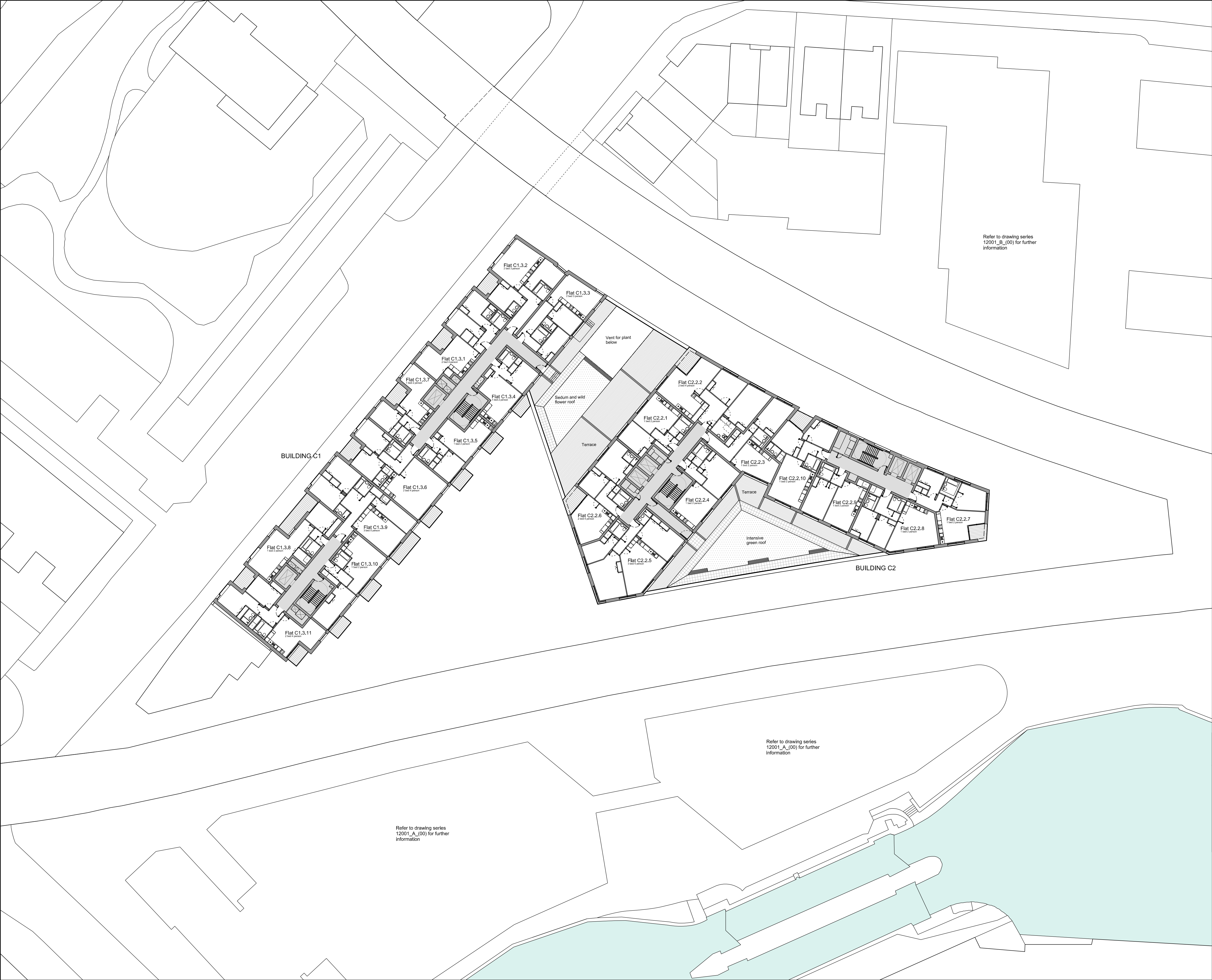
job title  
CAMDEN LOCK VILLAGE

drawing title / location  
PROPOSED BUILDING C1 SECOND FLOOR PLAN  
PROPOSED BUILDING C2 FIRST FLOOR PLAN

drawn by	checked	scale	status
DF	WL	1:250@A1; 1:500@A3	PLANNING

project	zone	classification	drawing no.	revision
12001	C	[00]	103	-





NOTE: INTERNAL LAYOUTS ARE INDICATIVE ONLY

Refer to drawing series  
12001\_B\_(00) for further  
information

Refer to drawing series  
12001\_A\_(00) for further  
information

Refer to drawing series  
12001\_A\_(00) for further  
information

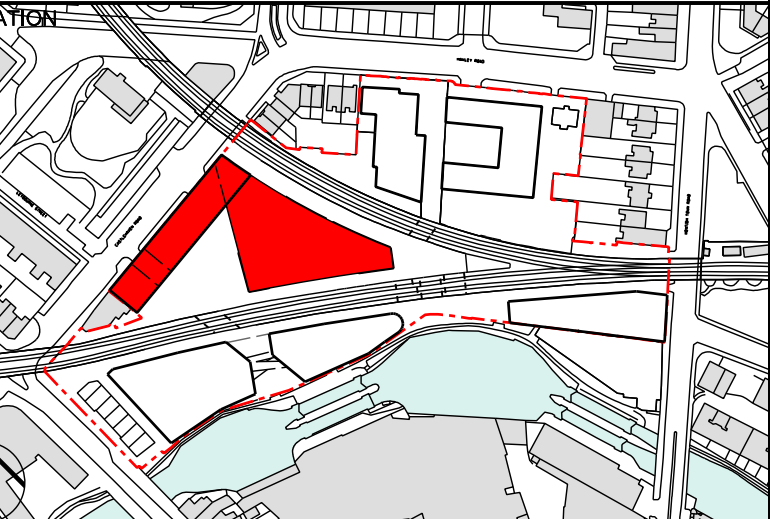
31/08/12 PLANNING ISSUE

REV

DATE

NOTE

1. Do not scale from this drawing, other than for Planning purposes.
2. All dimensions to be checked on site by the contractor and such dimensions to be his responsibility.
3. Report all drawing errors, omissions and discrepancies to the architect.
4. This document may be issued in an uncontrolled CAD format to enable others to use it as background information to make alterations and/or additions. In that instance the file will be accompanied by a PDF version. It is for those making such alterations and additions to ensure that they make use of current background information. AHMM Ltd accepts no liability for any such alterations or additions to the background information or arising out of changes to background information which occur prior to alterations or additions being made.



**ALLFORD HALL MONAGHAN MORRIS**

ARCHITECTS Ltd  
2ND FLOOR, BLOCK C, 5-23 OLD STREET LONDON EC1V 9HL  
TEL 020 7251 5261 FAX 020 7251 5123 WEB WWW.AHMM.CO.UK

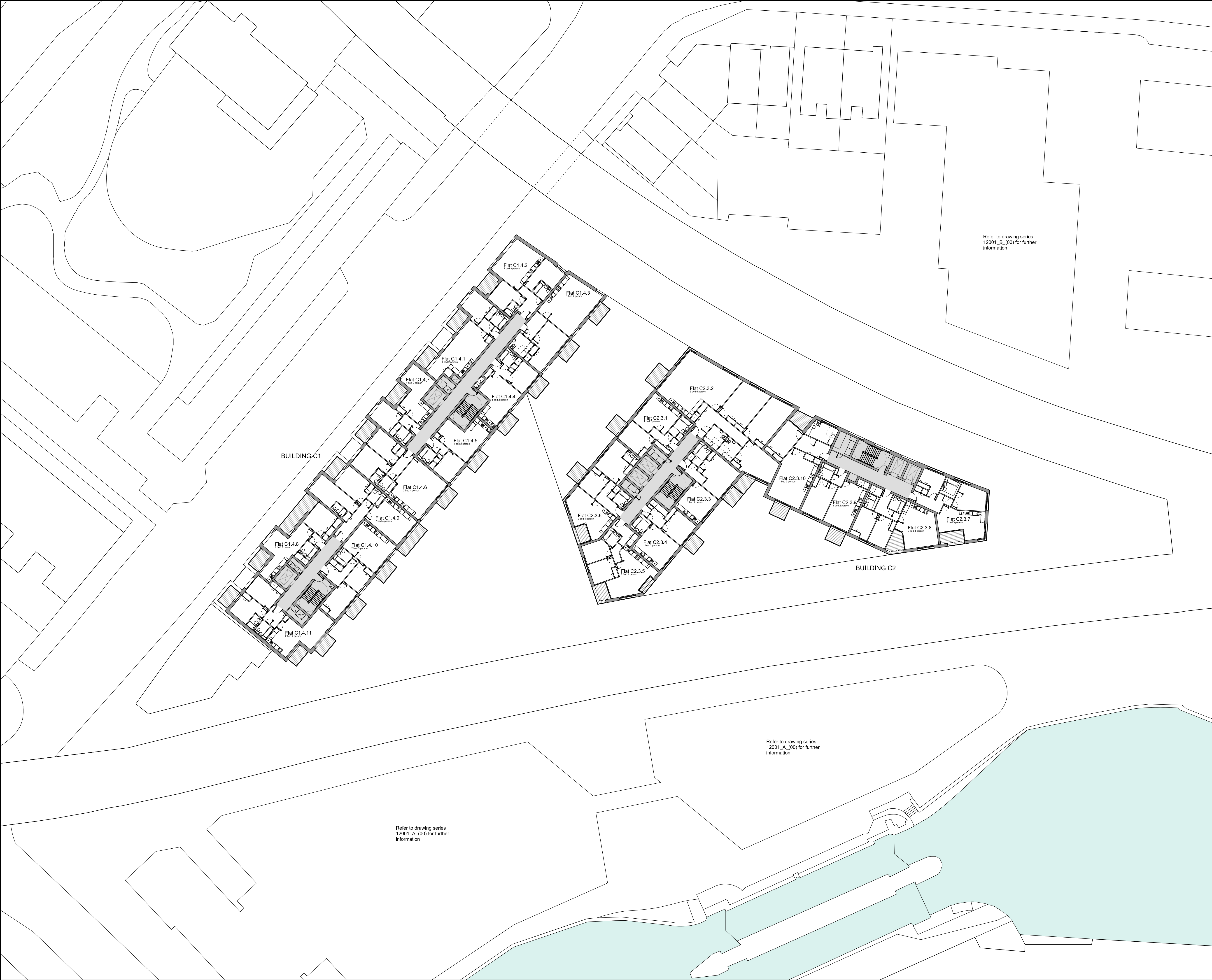
job title  
CAMDEN LOCK VILLAGE

drawing title / location  
PROPOSED BUILDING C1 THIRD FLOOR PLAN  
PROPOSED BUILDING C2 SECOND FLOOR PLAN

drawn by	checked	scale	status
DF	WL	1:250@A1; 1:500@A3	PLANNING

project	zone	classification	drawing no.	revision
12001	C	[00]	104	-



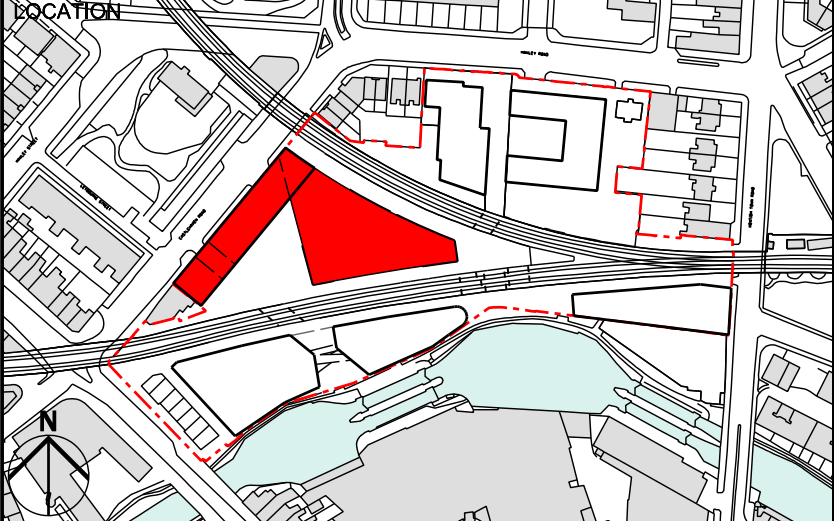


NOTE: INTERNAL LAYOUTS ARE INDICATIVE ONLY

-	31/08/12	PLANNING ISSUE
---	----------	----------------

REV	DATE
-----	------

- NOTE
1. Do not scale from this drawing, other than for Planning purposes.
  2. All dimensions to be checked on site by the contractor and such dimensions to be his responsibility.
  3. Report all drawing errors, omissions and discrepancies to the architect.
  4. This document may be issued in an uncontrolled CAD format to enable others to use it as background information to make alterations and/or additions. In that instance the file will be accompanied by a PDF version. It is for those making such alterations and additions to ensure that they make use of current background information. AHMM Ltd accepts no liability for any such alterations or additions to the background information or arising out of changes to background information which occur prior to alterations or additions being made.



**ALLFORD HALL MONAGHAN MORRIS**  
ARCHITECTS Ltd  
2ND FLOOR, BLOCK C, 5-23 OLD STREET LONDON EC1V 9HL  
TEL 020 7251 5261 FAX 020 7251 5123 WEB WWW.AHMM.CO.UK

job title  
CAMDEN LOCK VILLAGE

drawing title / location  
PROPOSED BUILDING C1 FOURTH FLOOR PLAN  
PROPOSED BUILDING C2 THIRD FLOOR PLAN

drawn by	checked	scale	status
DF	WL	1:250@A1; 1:500@A3	PLANNING

project	zone	classification	drawing no.	revision
12001	C	[00]	105	-