



KEY

Boundary of outline application

Boundary of Detailed Application for Change of Use and Detailed Listed Building Consent
Please refer to drawings HR_N1853_001 to HR_N1853_018

Area below ground level is excluded from Outline Application Boundary
For details of this area please see Drawing Number 2765-SK016

Existing Buildings within Boundary

B

31/08/12

Issued for planning

A

16/08/12

Issued for information

-

27/07/12

Issued for information

REV

DATE

NOTE

1. Do not scale from this drawing, other than for Planning purposes.

2. All dimensions to be checked on site by the contractor and such dimensions to be his responsibility.

3. Report all drawing errors, omissions and discrepancies to the architect.

4. This document may be issued in an uncontrolled CAD format to enable others to use it as background information to make alterations and/or additions. In that instance the file will be accompanied by a PDF version. It is for those making such alterations and additions to ensure that they make use of current background information. AHMM Ltd accepts no liability for any such alterations or additions to the background information or arising out of changes to background information which occur prior to alterations of additions being made.

LOCATION

ALLFORD HALL MONAGHAN MORRIS

ARCHITECTS Ltd
2ND FLOOR, BLOCK C, 5-23 OLD STREET LONDON EC1V 9HL
TEL 020 7251 5261 FAX 020 7251 5123 WEB WWW.AHMM.CO.UK

job title

CAMDEN LOCK VILLAGE

drawing title / location

SITE BOUNDARY
OUTLINE SCHOOL APPLICATION

drawn by

checked

scale

status

GS

LS

1:200@A1; 1:400@A3

PLANNING

project

zone

source

classification

drawing no.

revision

12001

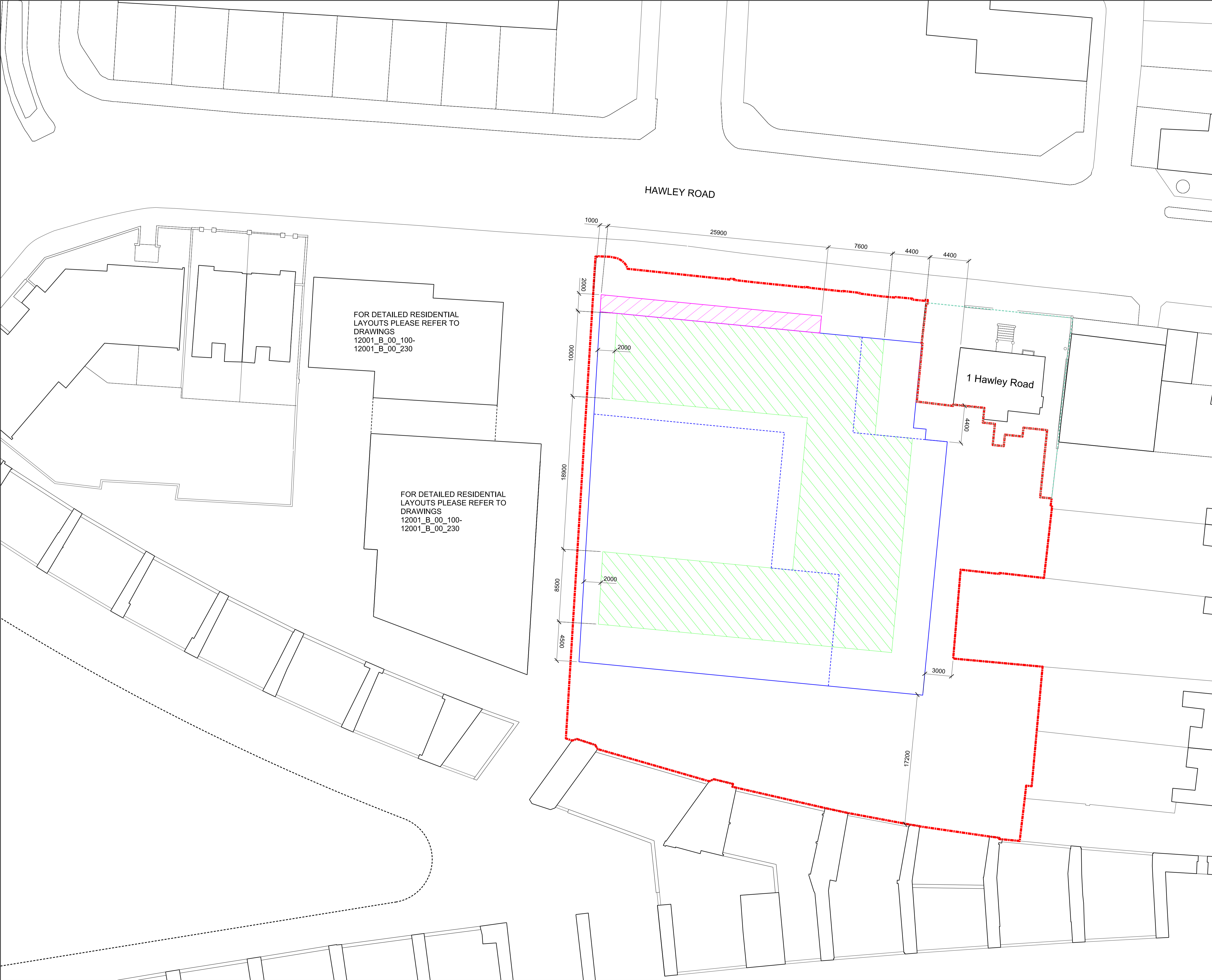
B

-

[00]

120

B



KEY

Boundary of outline application

Boundary of Detailed Application
for Change of Use and Detailed
Listed Building Consent
Please refer to drawings
HR_N1853_001 to HR_N1853_018

Maximum Extents of Building Envelope

Maximum Extents of Building
Envelope at Third Floor

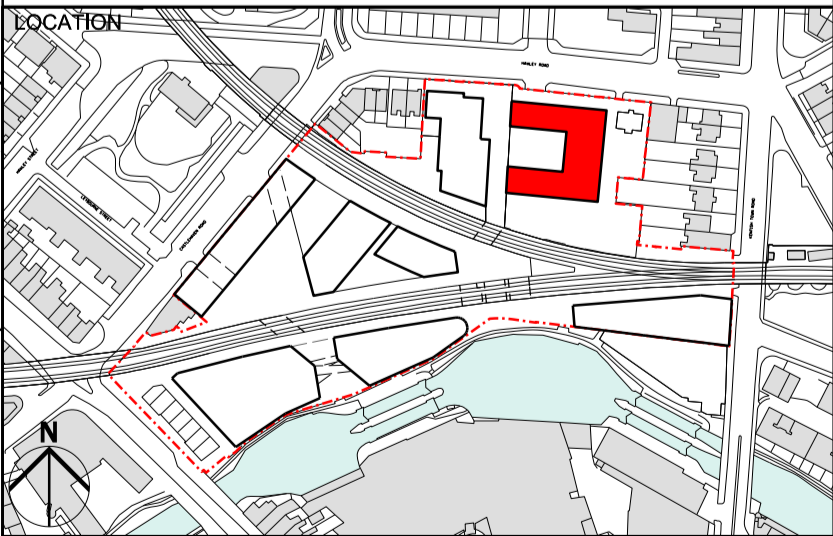
Minimum Extents of Building Envelope

Maximum extents of building projection
for facade articulation. The total width of
the projections will be no greater than
1/2 of the width of the north elevation.

REV	DATE
C	31/08/12 Issued for planning
B	16/08/12 Issued for information
A	03/08/12 Issued for information
-	27/07/12 Issued for information

NOTE

1. Do not scale from this drawing, other than for Planning purposes.
2. All dimensions to be checked on site by the contractor and such dimensions to be his responsibility.
3. Report all drawing errors, omissions and discrepancies to the architect.
4. This document may be issued in an uncontrolled CAD format to enable others to use it as background information to make alterations and/or additions. In that instance the file will be accompanied by a PDF version. It is for those making such alterations and additions to ensure that they make use of current background information. AHMM Ltd accepts no liability for any such alterations or additions to the background information or arising out of changes to background information which occur prior to alterations of additions being made.



ALLFORD HALL MONAGHAN MORRIS

ARCHITECTS Ltd
2ND FLOOR, BLOCK C, 5-23 OLD STREET LONDON EC1V 9HL
TEL 020 7251 5261 FAX 020 7251 5123 WEB WWW.AHMM.CO.UK

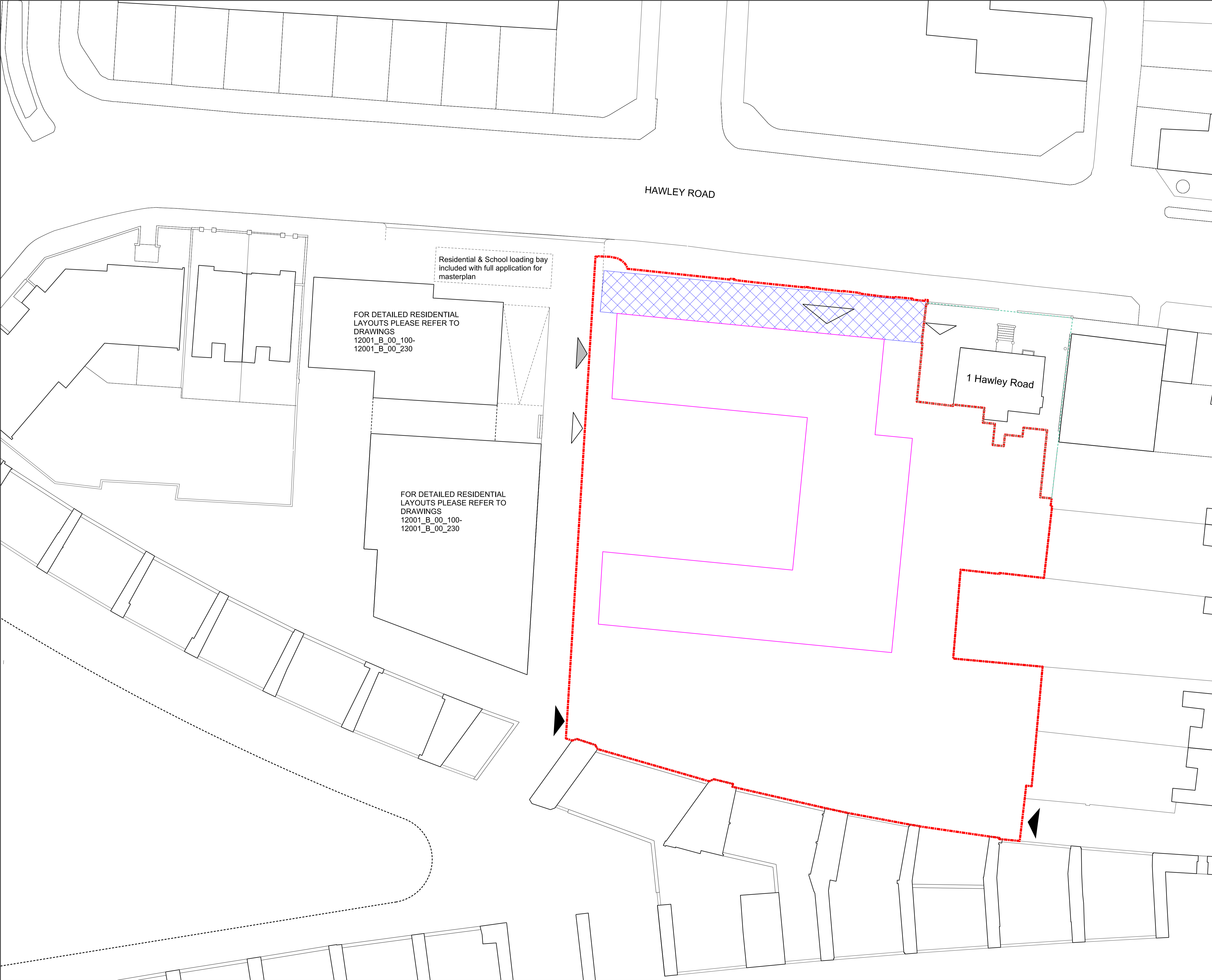
job title

CAMDEN LOCK VILLAGE

drawing title / location

BUILDING SIZE AND LAYOUT
OUTLINE SCHOOL APPLICATION

drawn by	checked	scale	status		
GS	LS	1:200@A1; 1:400@A3	PLANNING		
project	zone	source	classification	drawing no.	revision
12001	B	-	[00]	121	C



KEY

Boundary of outline application

Boundary of Detailed Application for Change of Use and Detailed Listed Building Consent
Please refer to drawings HR_N1853_001 to HR_N1853_018

Extents of building envelope are illustrative only. For more information on maximum and minimum extents of building envelope please refer to drawing 12001_B_00_121_C

Zone for disabled parking

Pedestrian Access

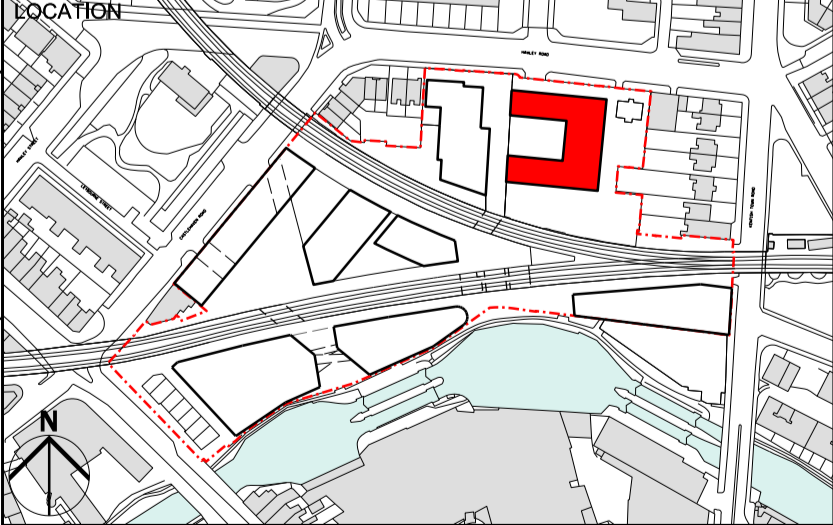
Vehicular/Service Access

Service Entry Point

B 31/08/12 Issued for planning	
A 16/08/12 Issued for information	
- 27/07/12 Issued for information	
REV	DATE

NOTE

1. Do not scale from this drawing, other than for Planning purposes.
2. All dimensions to be checked on site by the contractor and such dimensions to be his responsibility.
3. Report all drawing errors, omissions and discrepancies to the architect.
4. This document may be issued in an uncontrolled CAD format to enable others to use it as background information to make alterations and/or additions. In that instance the file will be accompanied by a PDF version. It is for those making such alterations and additions to ensure that they make use of current background information. AHMM Ltd accepts no liability for any such alterations or additions to the background information or arising out of changes to background information which occur prior to alterations of additions being made.

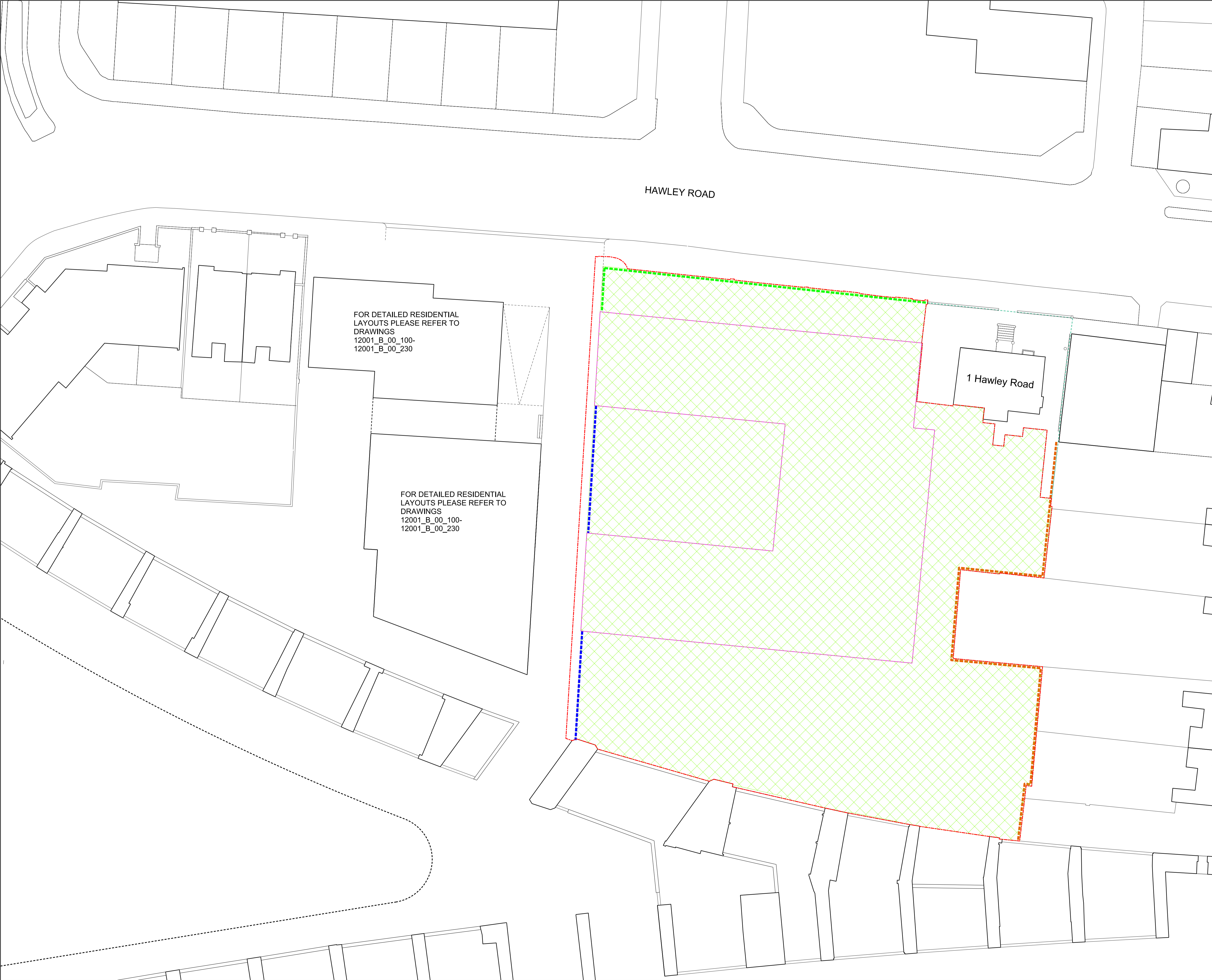


ALLFORD HALL MONAGHAN MORRIS
ARCHITECTS Ltd
2ND FLOOR, BLOCK C, 5-23 OLD STREET LONDON EC1V 9HL
TEL 020 7251 5261 FAX 020 7251 5123 WEB WWW.AHMM.CO.UK

job title
CAMDEN LOCK VILLAGE

drawing title / location
VEHICULAR & PEDESTRIAN ACCESS
OUTLINE SCHOOL APPLICATION

drawn by	checked	scale	status		
GS	LS	1:200@A1; 1:400@A3	PLANNING		
project	zone	source	classification	drawing no.	revision
12001	B	-	[00]	122	B



Boundary of outline application

Boundary of Detailed Application for Change of Use and Detailed Listed Building Consent
Please refer to drawings HR_N1853_001 to HR_N1853_018

Extents of building envelope are illustrative only. For more information on maximum and minimum extents of building envelope please refer to drawing 12001_B[00]_121 Rev C

Maximum extent of Play Space/Habitat/Float/Non-net Areas provided at ground & roof level

ELEVATION OF NORTHERN BOUNDARY ENCLOSURES

VISUALLY PERMEABLE ENCLOSURE

SOLID ENCLOSURE

MAX OVERALL HEIGHT 2.4m

MAX SOLID HEIGHT 1.2m

ELEVATION OF EASTERN BOUNDARY ENCLOSURES

VISUALLY PERMEABLE ENCLOSURE

SOLID ENCLOSURE

MAX OVERALL HEIGHT 3.5m

MAX SOLID HEIGHT 2.4m

ELEVATION OF WESTERN BOUNDARY ENCLOSURES

VISUALLY PERMEABLE ENCLOSURE

SOLID ENCLOSURE

MAX OVERALL HEIGHT 3.5m

MAX SOLID HEIGHT 1.5m

B31/08/12Issued for planning

A16/08/12Issued for information

-27/07/12Issued for information

REV

DATE

NOTE

1. Do not scale from this drawing, other than for Planning purposes.

2. All dimensions to be checked on site by the contractor and such dimensions to be his responsibility.

3. Report all drawing errors, omissions and discrepancies to the architect.

4. This document may be issued in an uncontrolled CAD format to enable others to use it as background information to make alterations and/or additions. In that instance the file will be accompanied by a PDF version. It is for those making such alterations and additions to ensure that they make use of current background information. AHMM Ltd accepts no liability for any such alterations or additions to the background information or arising out of changes to background information which occur prior to alterations of additions being made.

LOCATION

ALLFORD HALL MONAGHAN MORRIS

ARCHITECTS Ltd
2ND FLOOR, BLOCK C, 5-23 OLD STREET LONDON EC1V 9HL
TEL 020 7251 5261 FAX 020 7251 5123 WEB WWW.AHMM.CO.UK

CAMDEN LOCK VILLAGE

drawing title / location
LANDSCAPE AND AMENITY
OUTLINE SCHOOL APPLICATION

drawn by

checked

scale

status

GS

LS

1:200@A1; 1:400@A3

PLANNING

project

zone

source

classification

drawing no.

revision

12001

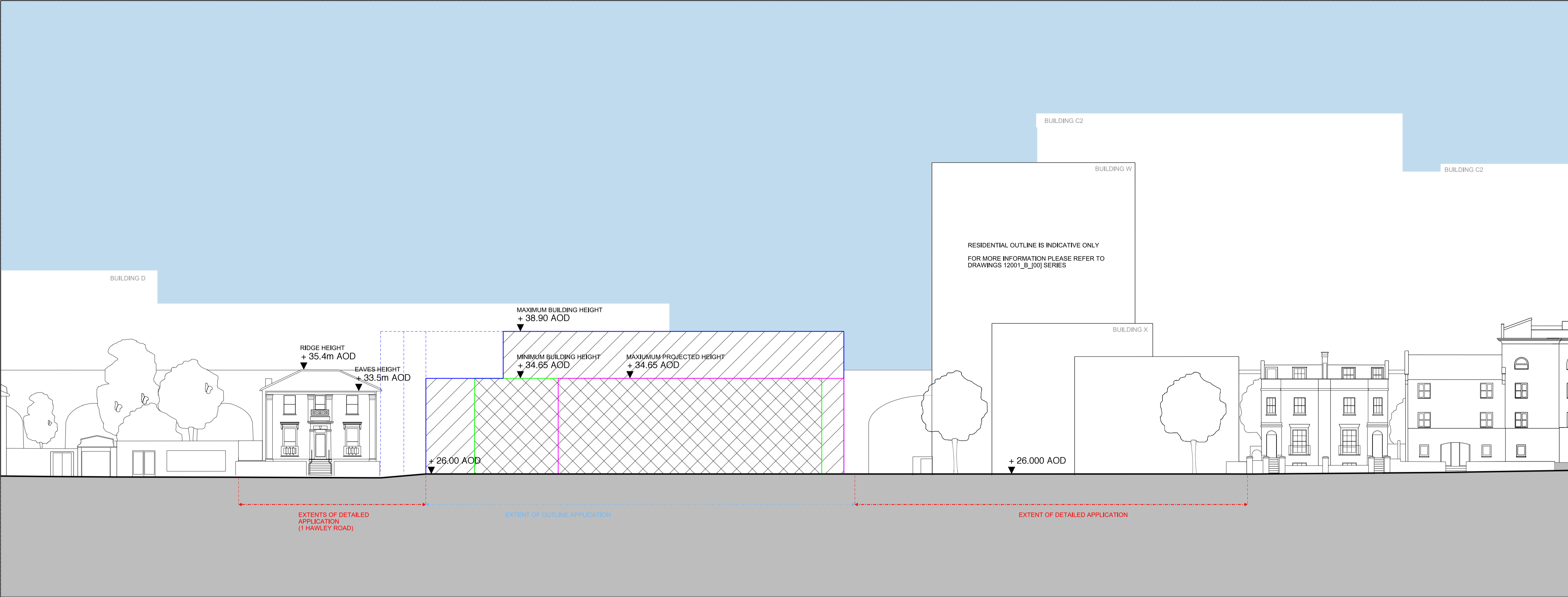
B

-

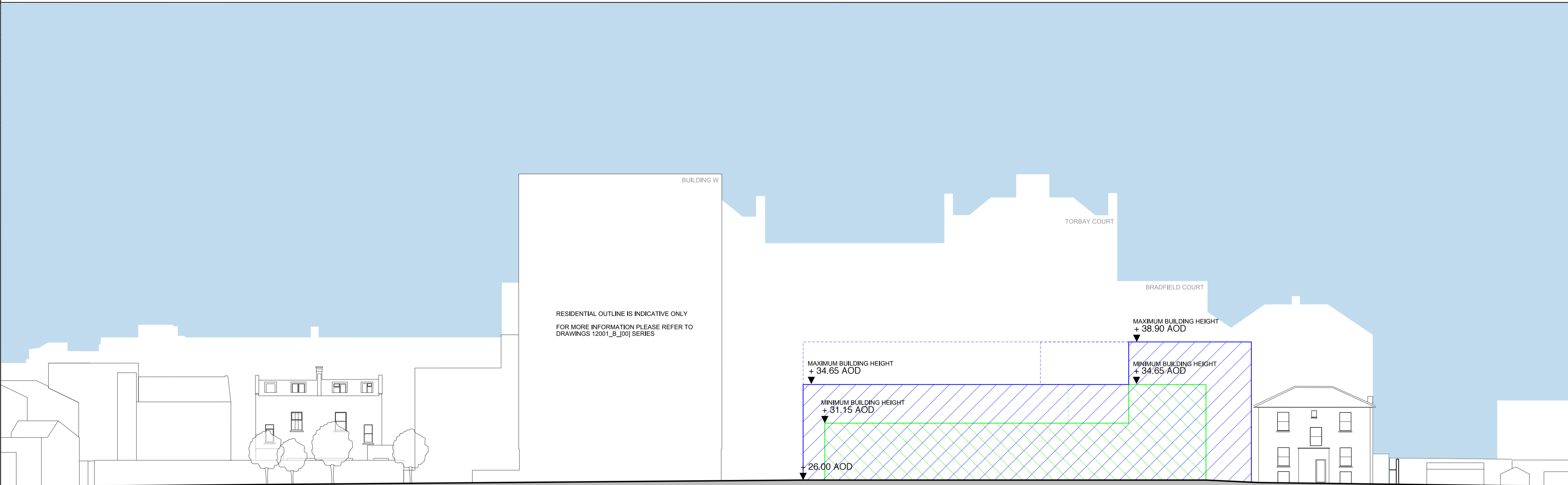
(00)

123

B



01 NORTH ELEVATION



02 SOUTH ELEVATION

NOTES -

Siting of building is indicative only. For further information relating to maximum and minimum extents please refer to drawing 12001_B_[00]_121

For information relating to boundary enclosure please refer to drawing 12001_B_[00]_123

Maximum Extents to Elevation of School Building

Minimum Extents to Elevation of School Building

Maximum Extents of Building Projection

Maximum Extents of East Block of School Building

Minimum Extents of East Block of School Building

C	31/08/12	Issued for planning
B	16/08/12	Issued for information
A	03/08/12	Issued for information
-	27/07/12	Issued for information

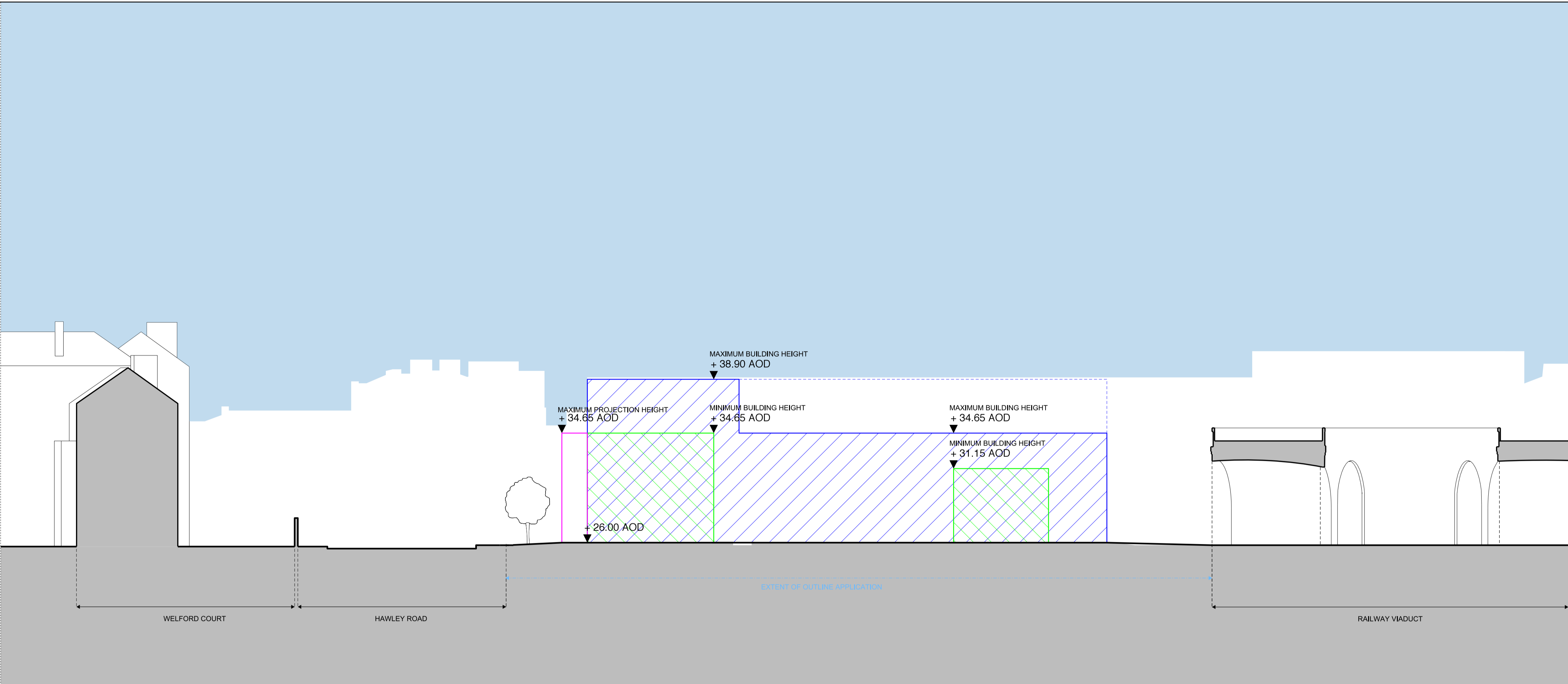
REV	DATE
NOTE	
1. Do not scale from this drawing, other than for Planning purposes.	
2. All dimensions to be checked on site by the contractor and such dimensions to be his responsibility.	
3. Report all drawing errors, omissions and discrepancies to the architect.	
4. This document may be issued in an uncontrolled CAD format to enable others to use it as background information to make alterations and/or additions. In that instance the file will be accompanied by a PDF version. It is for those making such alterations and additions to ensure that they make use of current background information. AHMM Ltd accepts no liability for any such alterations or additions to the background information or arising out of changes to background information which occur prior to alterations of additions being made.	

ALLFORD HALL MONAGHAN MORRIS
ARCHITECTS Ltd
2ND FLOOR, BLOCK C, 5-23 OLD STREET LONDON EC1V 9HL
TEL 020 7251 5261 FAX 020 7251 5123 WEB WWW.AHMM.CO.UK

job title
CAMDEN LOCK VILLAGE

drawing title / location
**BUILDING HEIGHTS - ELEVATIONS
OUTLINE SCHOOL APPLICATION**

drawn by	checked	scale	status		
GS	LS	1:200@A1; 1:400@A3	PLANNING		
project	zone	source	classification	drawing no.	revision
12001	B	-	(00)	220	C



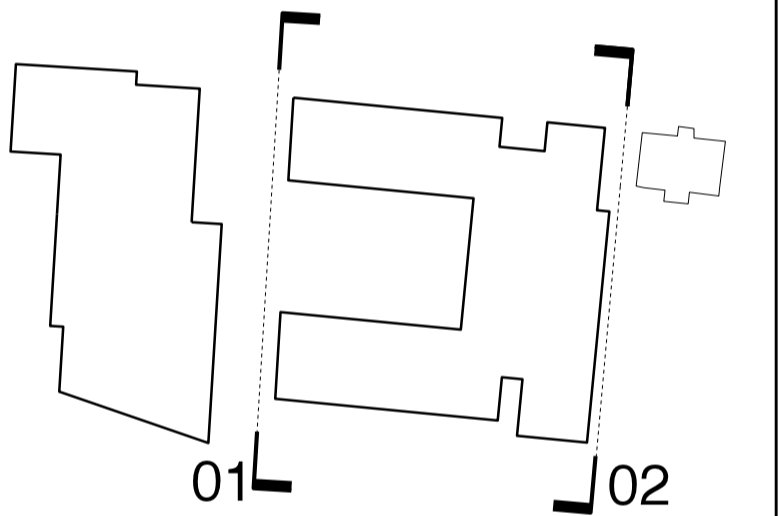
01 WEST ELEVATION



02 EAST ELEVATION

NOTES -
Siting of building is indicative only. For further information relating to maximum and minimum extents please refer to drawing PP4401.
For information relating to boundary enclosure please refer to drawing PP4404

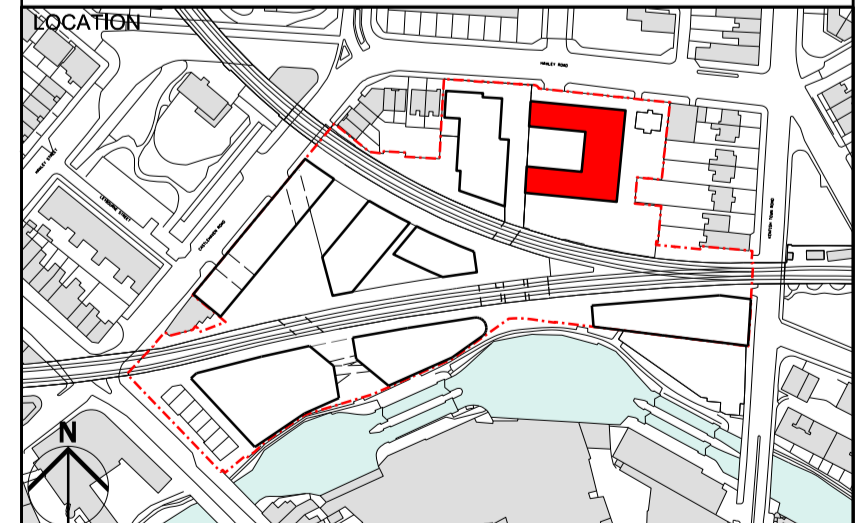
- Maximum Extents to Elevation of School Building
- Minimum Extents to Elevation of School Building
- Maximum Extents of Building Projection
- Maximum Extents of East Block of School Building



C	31/08/12	Issued for planning
B	16/08/12	Issued for information
A	03/08/12	Issued for information
-	27/07/12	Issued for information

REV	DATE
-----	------

NOTE
1. Do not scale from this drawing, other than for Planning purposes.
2. All dimensions to be checked on site by the contractor and such dimensions to be his responsibility.
3. Report all drawing errors, omissions and discrepancies to the architect.
4. This document may be issued in an uncontrolled CAD format to enable others to use it as background information to make alterations and/or additions. In that instance the file will be accompanied by a PDF version. It is for those making such alterations and additions to ensure that they make use of current background information. AHMM Ltd accepts no liability for any such alterations or additions to the background information or arising out of changes to background information which occur prior to alterations of additions being made.



ALLFORD HALL MONAGHAN MORRIS
ARCHITECTS Ltd
2ND FLOOR, BLOCK C, 5-23 OLD STREET LONDON EC1V 9HL
TEL 020 7251 5261 FAX 020 7251 5123 WEB WWW.AHMM.CO.UK

job title
CAMDEN LOCK VILLAGE

drawing title / location
BUILDING HEIGHTS - ELEVATIONS
OUTLINE SCHOOL APPLICATION

drawn by		checked		scale		status	
GS		LS		1:200@A1; 1:400@A3		PLANNING	
project		zone	source	classification	drawing no.	revision	
12001		B	-	(00)	221	C	