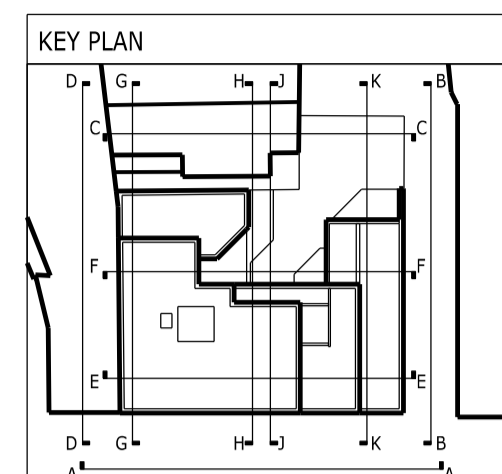
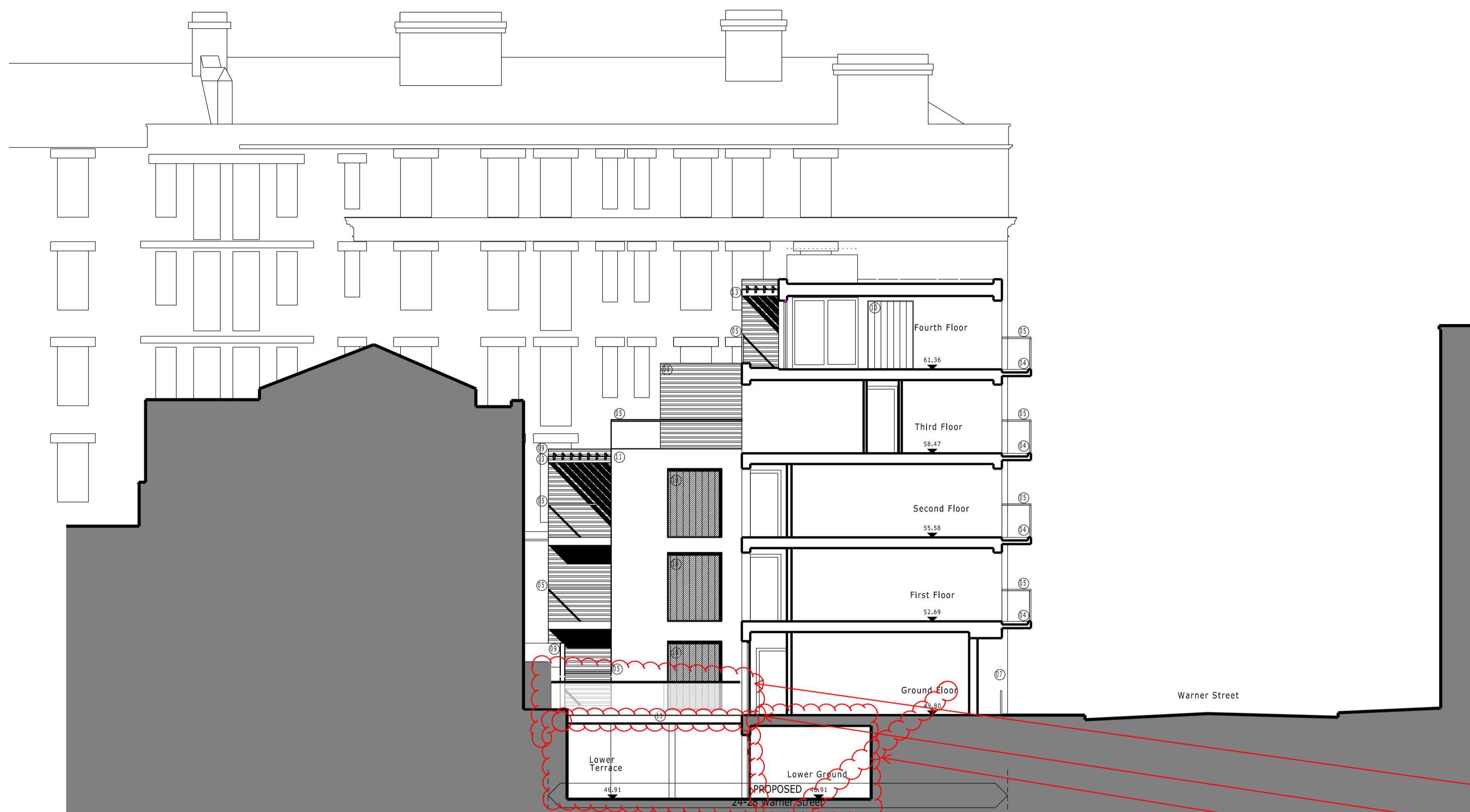


THIS DRAWING AND CAD DATA THEREIN IS PROTECTED BY COPYRIGHT AND MUST NOT BE COPIED OR REPRODUCED WITHOUT THE WRITTEN CONSENT OF THE ARCHITECT
 NO DIMENSIONS ARE TO BE SCALED FROM THIS DRAWING. USE FIGURED DIMENSIONS ONLY. ALL DIMENSIONS AND SIZES ARE TO BE CHECKED ON SITE AND ANY DISCREPANCIES REPORTED TO THE ARCHITECT PRIOR TO INITIATION OF ANY WORKS.

0 1 3 5m

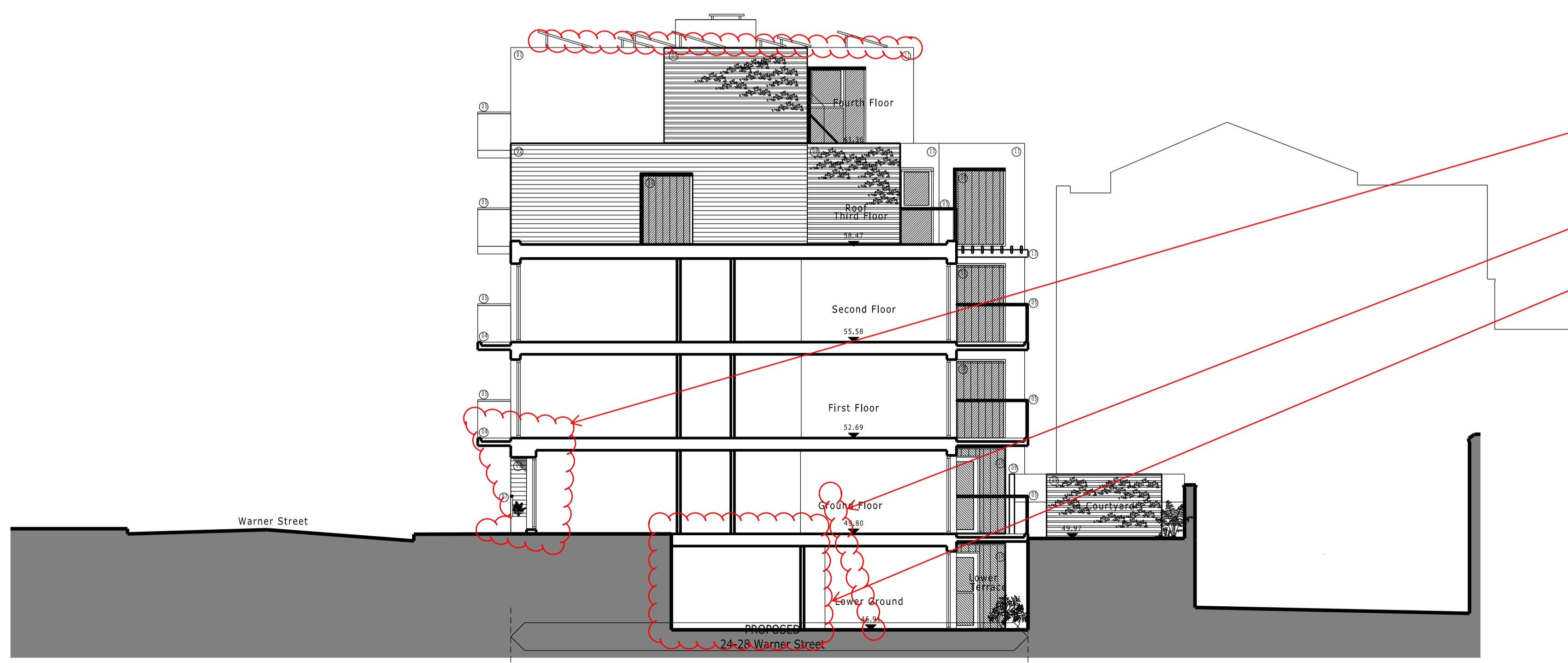


- LIST OF MATERIALS**
01. Site Re-damed Brickwork (F10/230)
 02. Western Red Cedar, weatherboard cladding (H2/111)
 03. P.C. Aluminium Glazing System (L10/400)
 04. Structurally cantilevered Concrete Balcony with soffit and fascia clad in Aluminium (H72/421)
 05. Glass panel balustrade with stainless steel handrails (Q41/L30)
 06. P.C. Aluminium cladding panel (L10/410)
 07. Stainless steel flat metal plate balustrade (Q41/L31)
 08. Structural glass entrance screen and doors with Stainless steel patch fittings (L20/260)
 09. Western Red Cedar, Screen (hit & miss clad both sides). (H21/115)
 10. Glass block/plank (textured distorted view). (H13/116)
 11. Render (off white). (H20/150)
 13. P.C. Aluminium louvers (L10/420)
 14. Timber Deck supported by frame structure painted white (K11/420)
 15. P.C. Aluminium Flashing (H72/423)



Section J-J

- E10: new bridge link with heightened balustrade
- E09: Rationalised excavation
- E08: Rationalised lower floor levels
- E09: Rationalised excavation
- E05: Updated unit 2 elevation
- E08: Rationalised lower floor levels
- E09: Rationalised excavation



Section K-K

REV.	DESCRIPTION	INITIALS	DATE
C	Planning Amendments	GG	18/09/12
B	Planning Amendments	DH	31/08/12
A	PV panels shown	TW	04/05/11

Job Name: 24-28 Warner Street, London, EC1
 Drawing Title: Sections J-J & K-K
 GA Sections Proposed
 Status:

Date	Sheet By	Scale @ Size
30/04/12	DH	1:100@A1

Job Number	Code	Drawing Number	Rev
3001	(P)	034	C

ARC Design Partnership LLP
 601 International House
 223 Regent Street
 London W1B 2QD
 t +44 (0)20 8890 3213
 studio@arcdesignllp.com