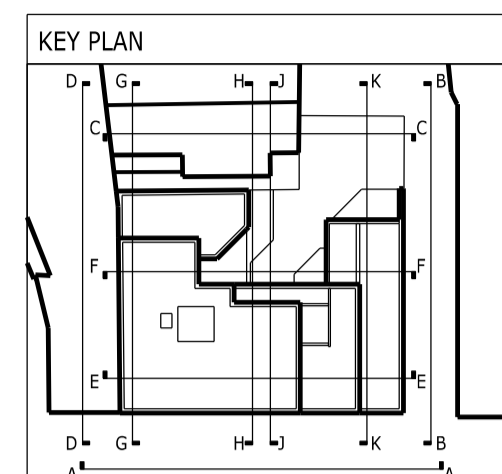
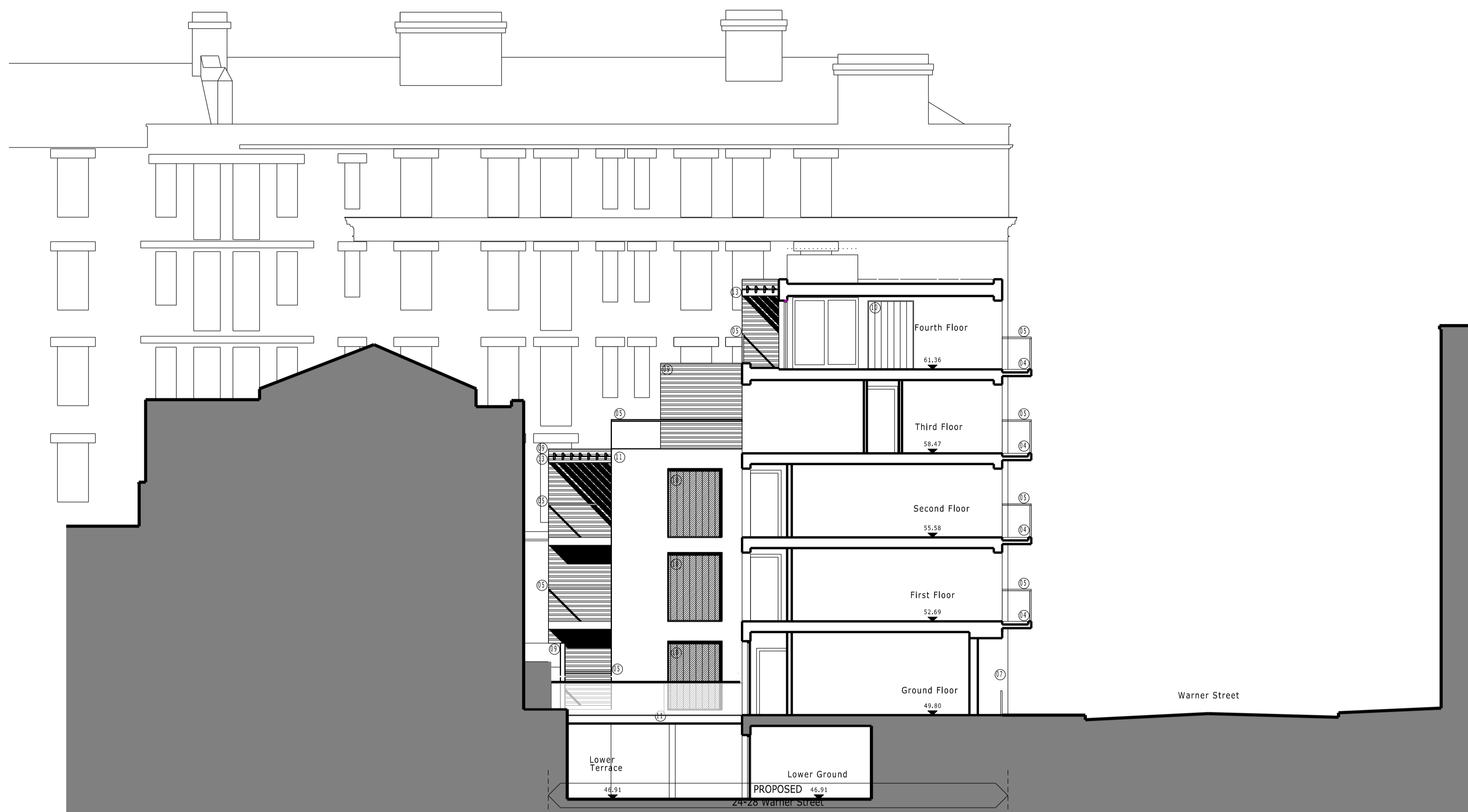


THIS DRAWING AND CAD DATA THEREIN IS PROTECTED BY COPYRIGHT AND MUST NOT BE COPIED OR REPRODUCED WITHOUT THE WRITTEN CONSENT OF THE ARCHITECT
 NO DIMENSIONS ARE TO BE SCALED FROM THIS DRAWING. USE FIGURED DIMENSIONS ONLY. ALL DIMENSIONS AND SIZES ARE TO BE CHECKED ON SITE AND ANY DISCREPANCIES REPORTED TO THE ARCHITECT PRIOR TO INITIATION OF ANY WORKS.

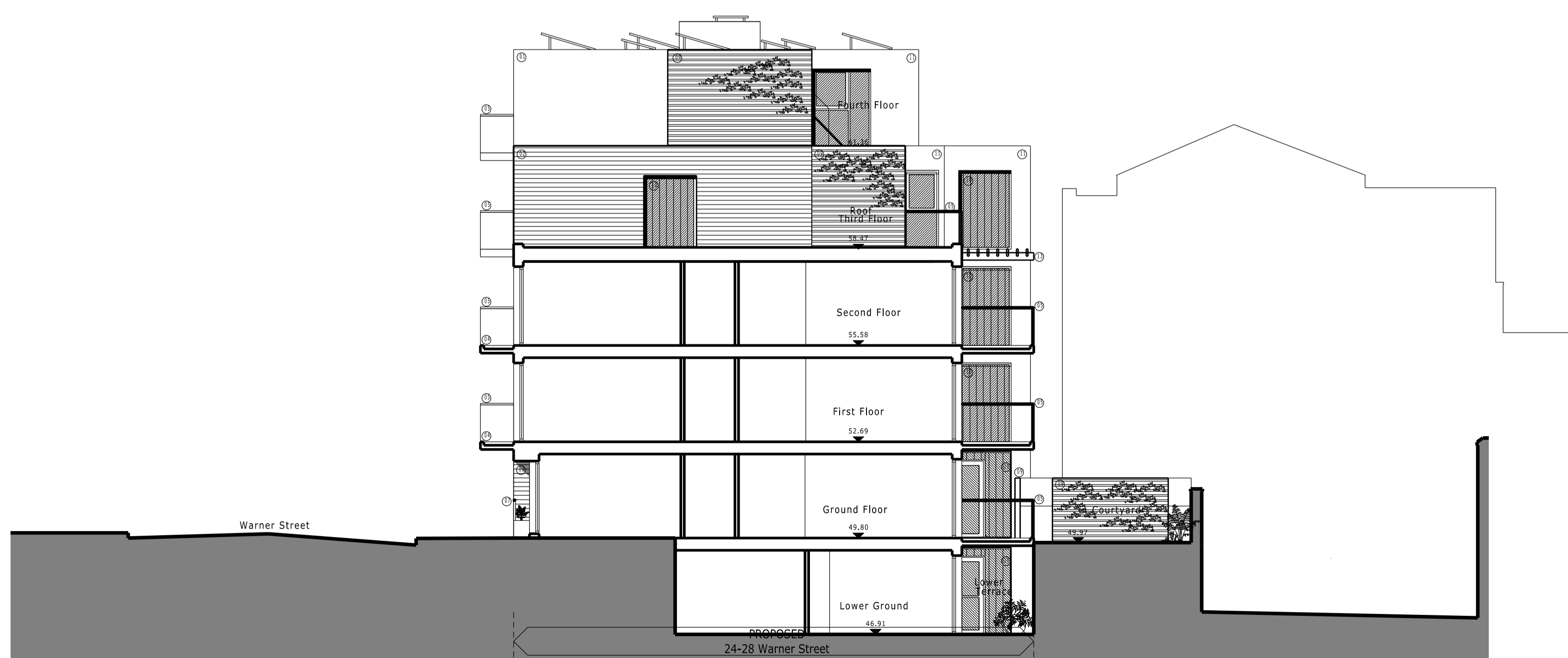
0 1 3 5m



- LIST OF MATERIALS**
01. Site Re-damed Brickwork (F10/230)
 02. Western Red Cedar, weatherboard cladding (H2/111)
 03. P.C. Aluminium Glazing System (L10/400)
 04. Structurally cantilevered Concrete Balcony with soffit and fascia clad in Aluminium (H72/421)
 05. Glass panel balustrade with stainless steel handrails (Q4/130)
 06. P.C. Aluminium cladding panel (L10/410)
 07. Stainless steel flat metal plate balustrade (Q4/131)
 08. Structural glass entrance screen and doors with stainless steel patch fittings (L20/260)
 09. Western Red Cedar, Screen (N&M clad both sides). (H2/115)
 10. Glass block/plank (textured distorted view). (H13/116)
 11. Render (off white). (H20/150)
 13. P.C. Aluminium louvers (L10/420)
 14. Timber Deck supported by frame structure painted white (K11/420)
 15. P.C. Aluminium Flashing (H72/423)



Section J-J



Section K-K

.....
 C Planning Amendments GG 18/09/12
 B Planning Amendments DH 31/08/12
 A PV panels shown TW 04/05/11

NO. DESCRIPTION INITIALS DATE

24-28 Warner Street
 London, EC1

Drawing Title
 Sections J-J & K-K
 GA Sections
 Proposed

Status

Date 30/04/12 Sheet By DH Scale @ Size 1:100@A1

Job Number 3001 Code (P) Drawing Number 034 Rev C

ARC Design Partnership LLP
 601 International House
 223 Regent Street
 London W1B 2QD

t +44 (0)20 8890 3213
 studio@arcdesignllp.com