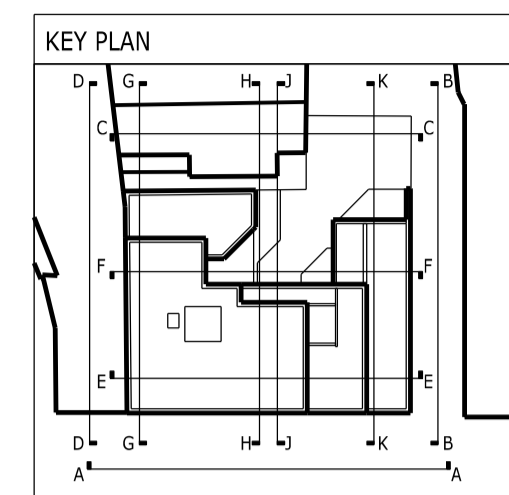
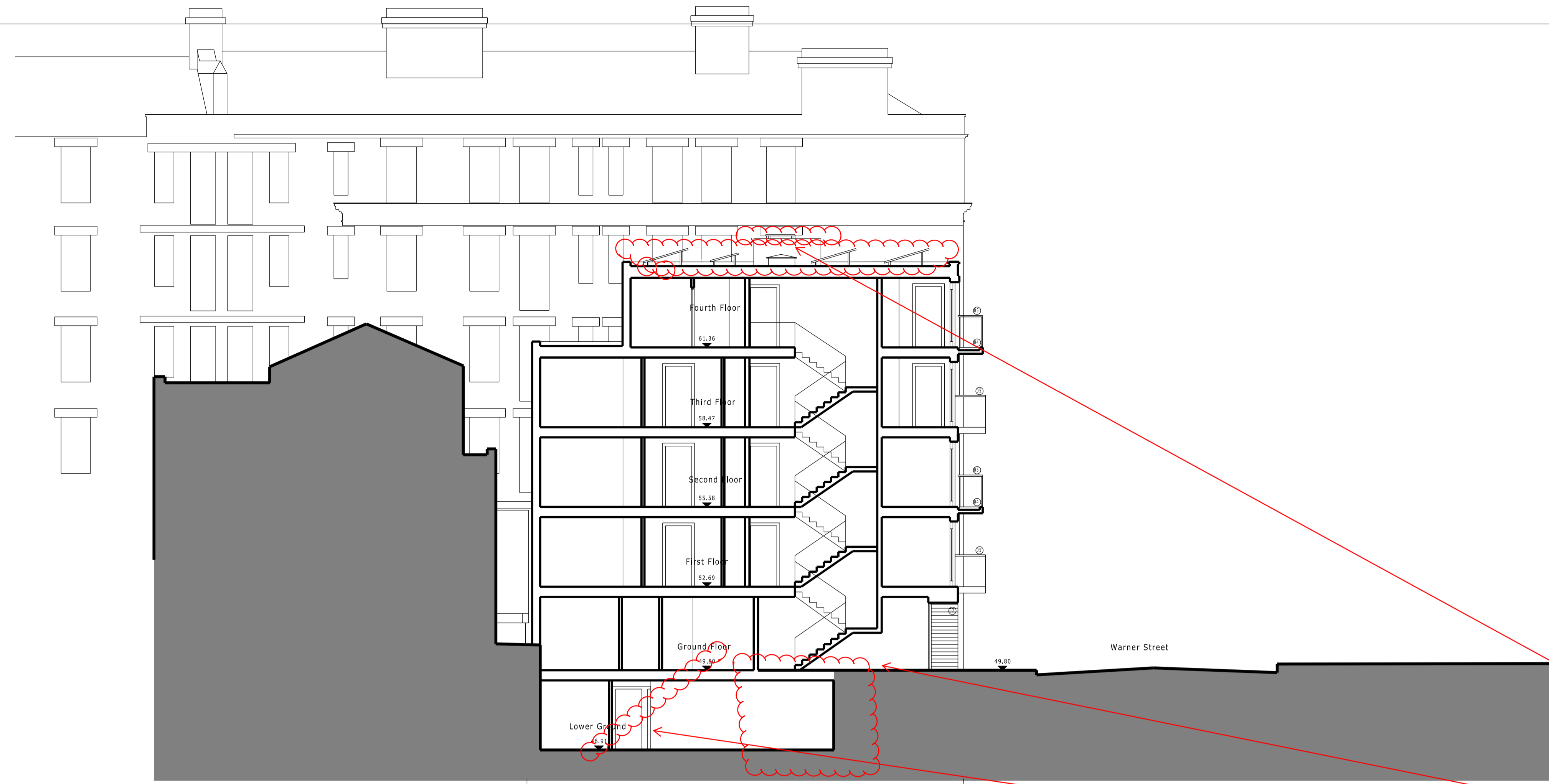


THIS DRAWING AND CAD DATA THEREIN IS PROTECTED BY COPYRIGHT AND MUST NOT BE COPIED OR REPRODUCED WITHOUT THE WRITTEN CONSENT OF THE ARCHITECT ©
 NO DIMENSIONS ARE TO BE SCALED FROM THIS DRAWING. USE FIGURED DIMENSIONS ONLY. ALL DIMENSIONS AND SIZES ARE TO BE CHECKED ON SITE AND ANY DISCREPANCIES REPORTED TO THE ARCHITECT PRIOR TO INITIATION OF ANY WORKS.

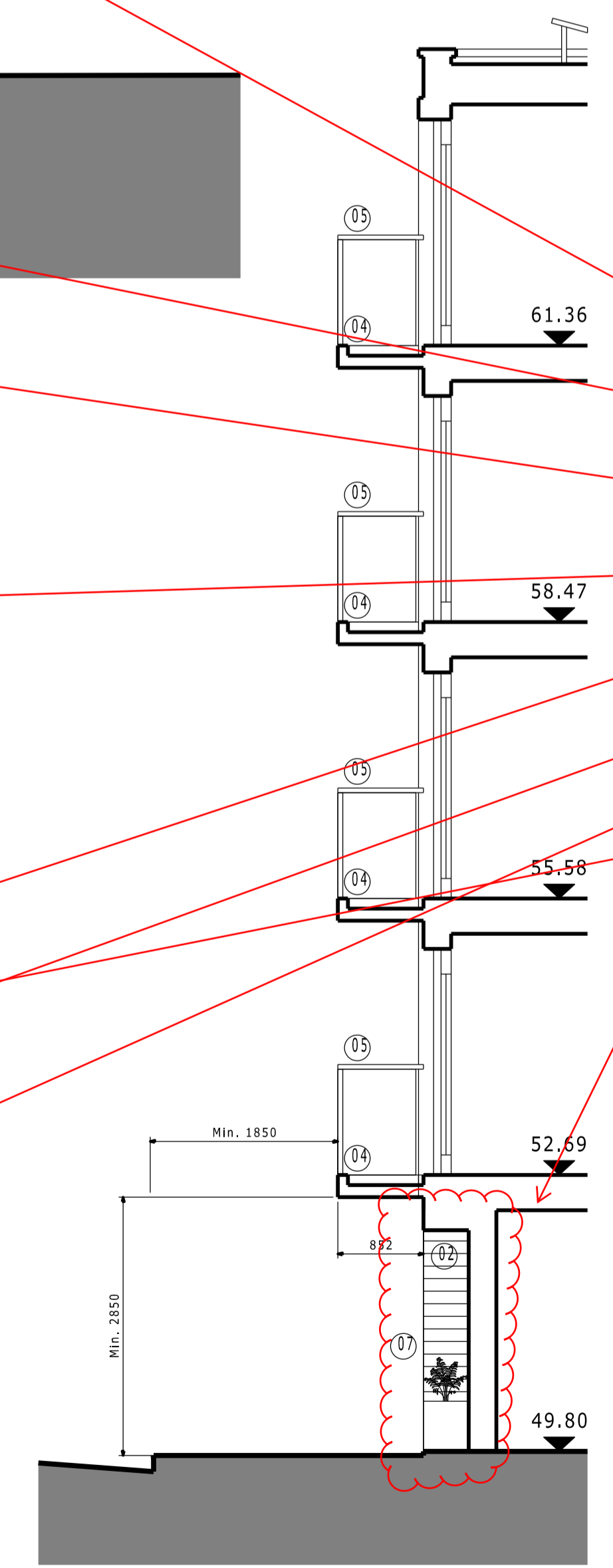


- LIST OF MATERIALS**
01. Site Re-damed Brickwork (F10/230)
 02. Western Red Cedar, weatherboard cladding (H2/111)
 03. P.C. Aluminium Glazing System (L10/400)
 04. Structurally cantilevered Concrete Balcony with soffit and fascia clad in Aluminium (H72/421)
 05. Glass panel balustrade with stainless steel handrails (Q4/130)
 06. P.C. Aluminium cladding panel (L10/410)
 07. Stainless steel flat metal plate balustrade (Q4/131)
 08. Structural glass entrance screen and doors with stainless steel patch fittings (L20/260)
 09. Western Red Cedar, Screen (ink & miss clad both sides), (H2/115)
 10. Glass block/plank (textured distorted view), (H13/116)
 11. Render (off white), (H20/150)
 13. P.C. Aluminium louvers (L10/420)
 14. Timber Deck supported by frame structure painted white (K11/420)
 15. P.C. Aluminium Flashing (H72/423)



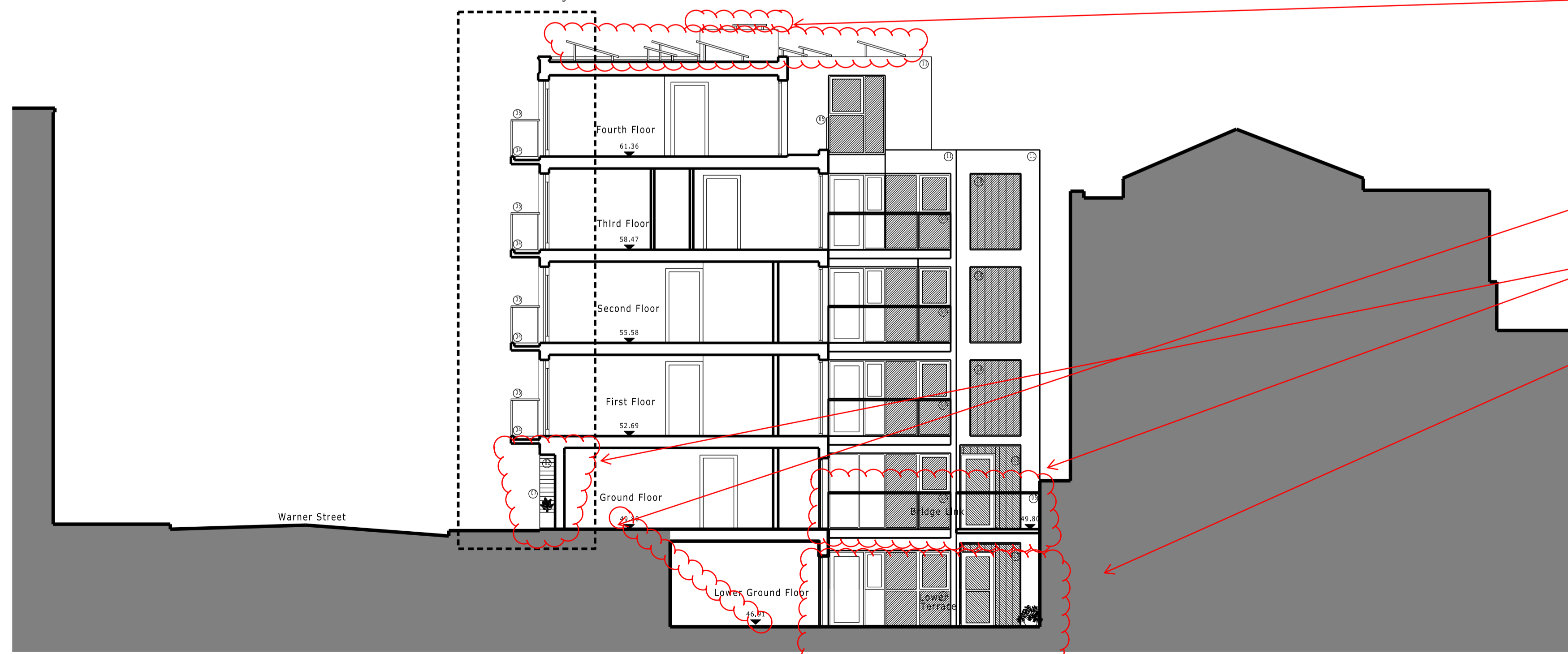
Section G-G

PROPOSED
24-28 Warner Street



- E01: Flat PV on top of lift over-run.
- E09: Rationalised excavation
- E08: Rationalised lower floor levels
- E01: Flat PV on top of lift over-run.
- E08: Rationalised lower floor levels
- E10: new bridge link with heightened balustrade
- E09: Rationalised excavation
- E05: Updated unit 2 elevation

For 1:50 detail refer to extract on this drawing sheet



Section H-H

PROPOSED
24-28 Warner Street

Section H-H (1:50 @ A1)

D	Planning Amendments	GG	18/9/12
C	Planning Amendments	DH	31/08/12
B	Incorporating Planning Advice	JB	23/06/11
A	PV panels shown	YW	04/05/11

Job Name
24-28 Warner Street
London, EC1

Drawing Title
Sections: G-G & H-H
GA Sections
Proposed

Status

Date	30/04/12	Sheet By	DH	Scale @ Size	1:100@A1
Job Number	3001	Code	(P)	Drawing Number	033
				Rev	D

ARC Design Partnership LLP
601 International House
223 Regent Street
London W1B 2QD
t +44 (0)20 8890 3213
studio@arcdesignllp.com