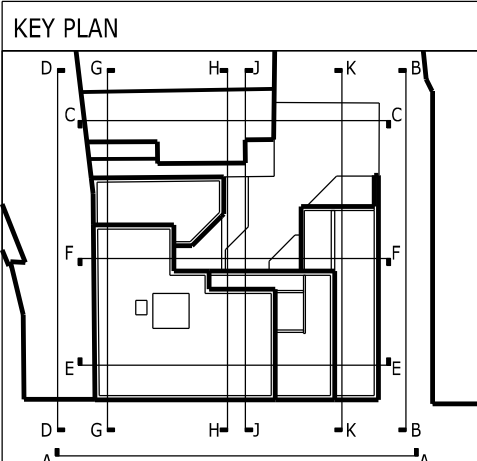
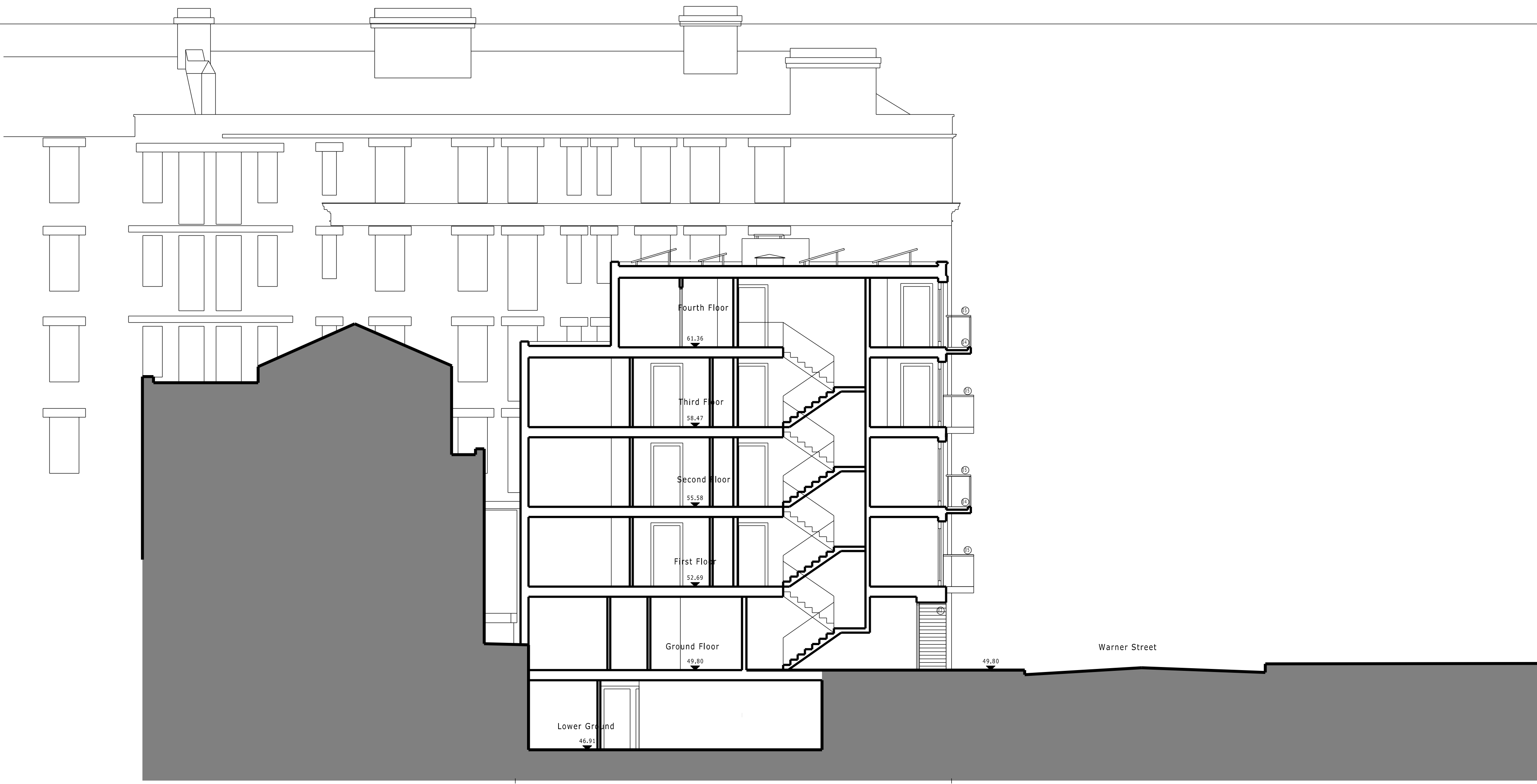


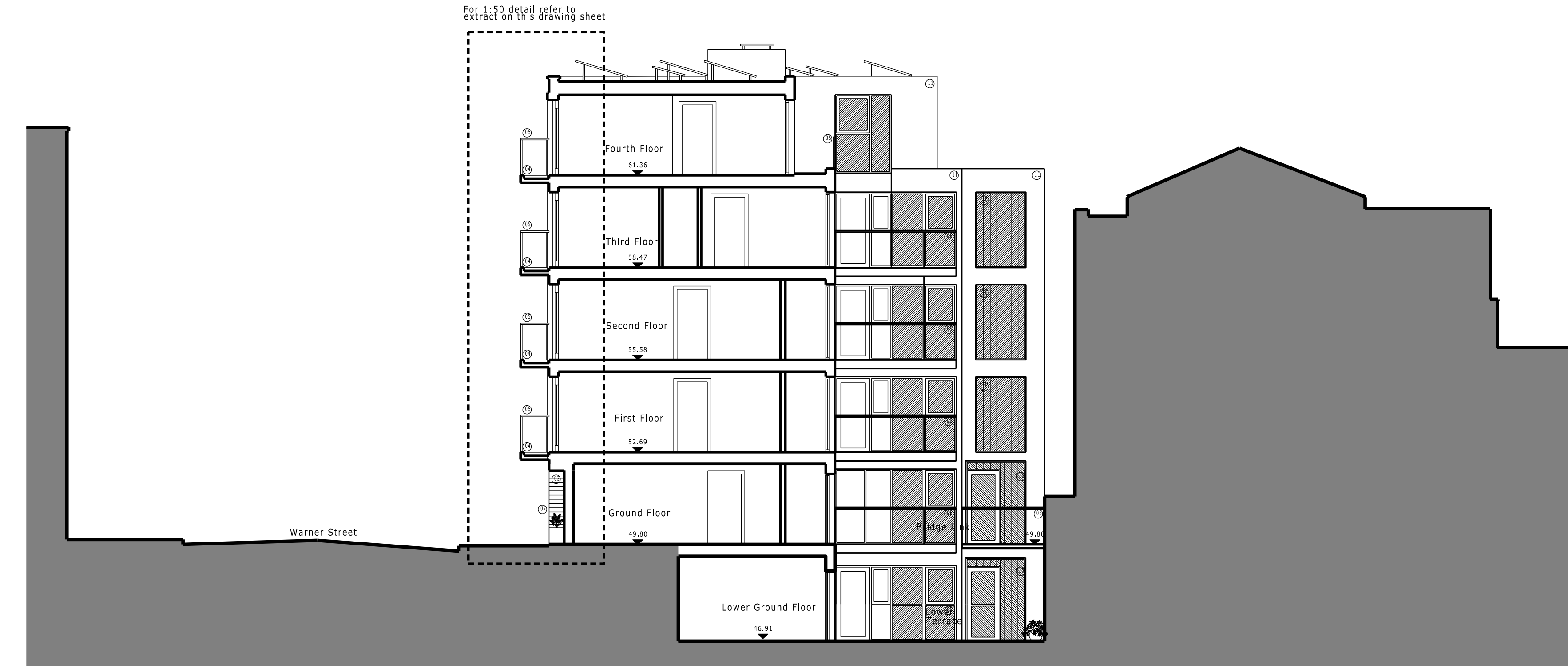
THIS DRAWING AND CAD DATA THEREIN IS PROTECTED BY
COPYRIGHT
AND MUST NOT BE COPIED OR REPRODUCED
WITHOUT THE WRITTEN CONSENT OF
THE ARCHITECT
©
NO DIMENSIONS ARE TO BE SCALED FROM THIS DRAWING.
USE FIGURED DIMENSIONS ONLY.
ALL DIMENSIONS AND SIZES ARE TO BE CHECKED ON SITE
AND ANY DISCREPANCIES REPORTED TO THE ARCHITECT
PRIOR TO INITIATION OF ANY WORKS.



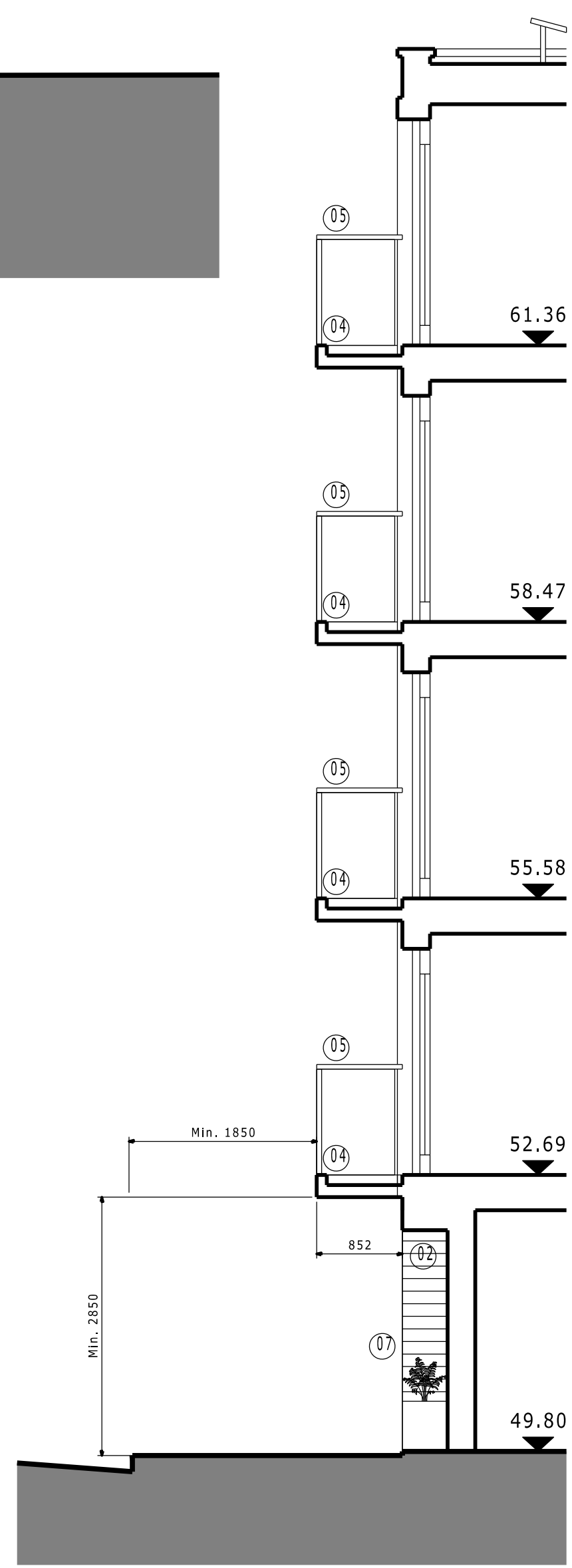
- LIST OF MATERIALS
01. Site Re-damed Brickwork (F10/230)
 02. Western Red Cedar, weatherboard cladding (H21/111)
 03. P.C. Aluminium Glazing System (L10/400)
 04. Structurally cantilevered Concrete Balcony with soffit and fascia clad in Aluminium (H72/421)
 05. Glass panel balustrade with stainless steel handrails (Q41/130)
 06. P.C. Aluminium cladding panel (L10/410)
 07. Stainless steel flat metal plate balustrade (Q41/131)
 08. Structural glass entrance screen and doors with Stainless steel patch fittings (L20/260)
 09. Western Red Cedar, Screen (nk & miss clad both sides). (H21/115)
 10. Glass block/plank (textured distorted view). (H13/116)
 11. Render (off white). (M20/150)
 13. P.C. Aluminium louvers (L10/420)
 14. Timber Deck supported by frame structure painted white (K11/420)
 15. P.C. Aluminium Flashing (H72/423)



Section G-G



Section H-H



Section H-H (1:50 @ A1)

D	Planning Amendments	GG	18/9/12
C	Planning Amendments	DH	31/05/12
B	Incorporating Planning Advice	JB	22/06/11
A	PV panels shown	YW	04/05/11

Job Name: 24-28 Warner Street London, EC1

Drawing Title: Sections G-G & H-H GA Sections Proposed

Status:

Date	Sheet By	Scale @ Size
30/04/12	DH	1:100@A1

Job Number	Code	Drawing Number	Rev
3001		(P) 033	D

ARC Design Partnership LLP
601 International House
223 Regent Street
London W1B 2QD

t +44 (0)20 8890 3213
studio@arcdesignllp.com