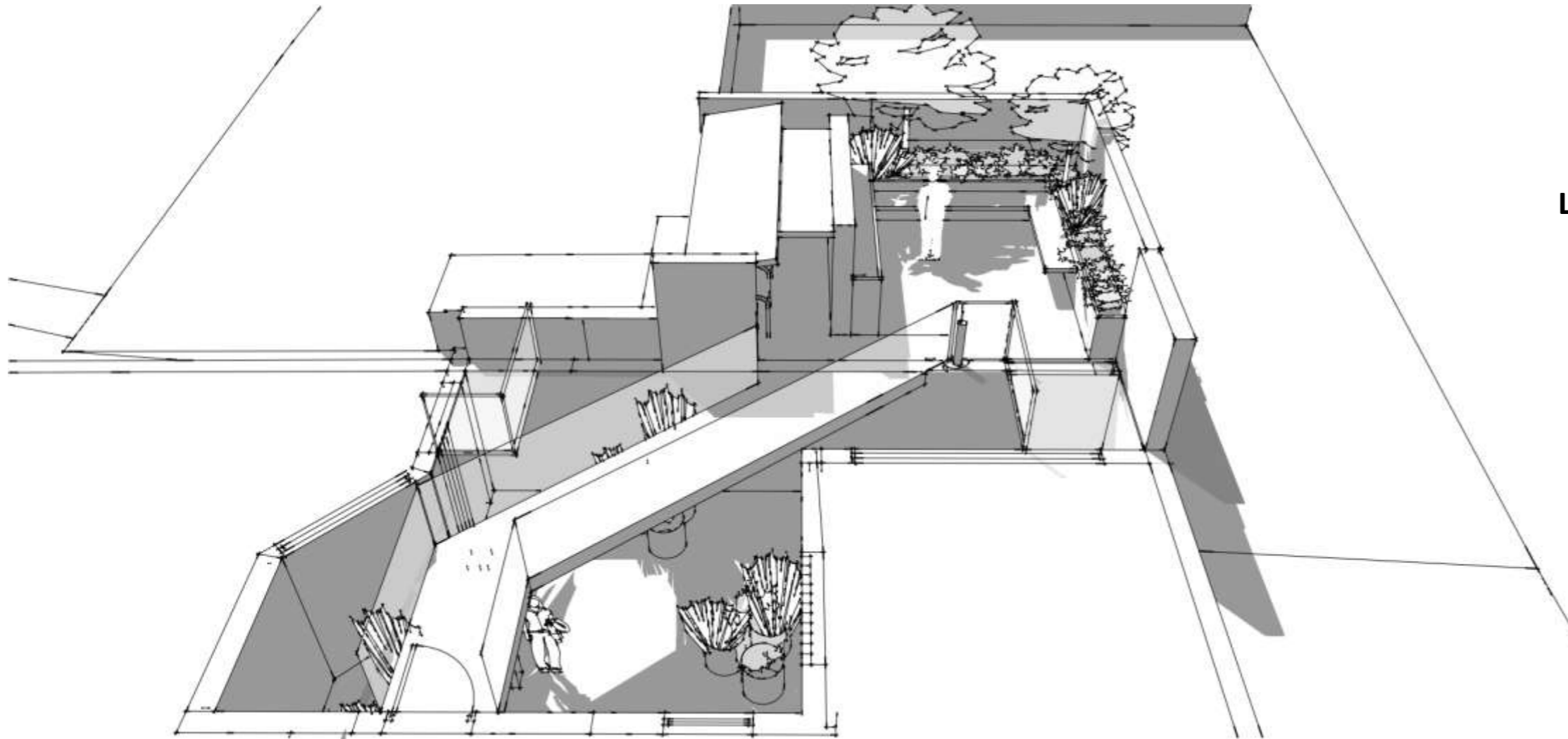


24-28 Warner Street

LANDSCAPE DESIGN PROPOSALS



Application Ref: **2011/5129/P**
24-28 Warner Street
London
EC1R 5EX

for Aitch Group

September 2012

David Orr Consulting

Urban Design and Landscape Architecture

3. Hard landscape materials

The rear courtyard will be paved in simple silver grey textured paving, with a slightly larger 300 x 450mm slab for the path and smaller 100 x 100mm sett for the seating area. Stock brick wall surround the garden and provide a degree of privacy and security (see Figure 5). A 2m brick wall divides the seating/ social area from sedum roofed cycle shelter and a cedar screen fence screens the bicycles from the main building.

The seating area/ social space is lined on two sides with a low planter fronted by timber benches. On the third side it has a low wall topped with a smooth surface as a place to barbecue and share food. Openings in the wall below allow for storage of garden materials.

Biodiversity

The garden is equipped with bug hotels to encourage beneficial insects such as solitary bees and lacewings. A wall-mounted bird table will be fitted. Planting (see section 4) is primarily selected for amenity but will also provide habitats and nectar for insects and birds.



Figure 6 Impression of the courtyard garden



Figure 5 Rhino 1 seat by Pendlewood



Bike shelter

The cycle shelter will provide space for parking 12 bicycles and will be planted with a mix of native annuals and long term perennials that suit the biodiversity action plan for the borough. The proprietary shelter is 2.4m total height with 2.0m clear height beneath the roof.



Figure 7 Example of a green roof cycle shelter: by <http://greenroofshelters.co.uk/>

4. Planting

Front planters

The front planters of the building will be planted with evergreen hardy low growing shrubs with small leaves (*Lonicera nitida* 'Elegans'). These provide a neat and clippable shrub that will provide formality and privacy whilst being low in maintenance.

Rear courtyard

The rear court is south facing but surrounded by tall four and five storey buildings. It will therefore catch limited direct sunlight and be predominantly shady. The structure of the planting is formed by small trees that have very strong seasonal interest, with autumn colour, and spring flowering. This is complemented by strong architectural foliage and a simple planting palette of low maintenance shade-tolerant shrubs and grasses. Several feature flowering perennials and climbers add seasonal interest.

TREES

Amelanchier lamarckii

Prunus x subhirtella 'Autumnalis'

SHRUBS

Epimedium versicolour 'Sulphureum'

Fatsia japonica

Festuca glauca

Lonicera nitida 'Elegans'

CLIMBERS

Actinidia kolomikta

Clematis 'Mrs Cholmondley'

PERENNIALS

Iris delavayi

Nassella tenuissima



Figure 8 Front planter shrub: *Lonicera*



Figure 9 Trees



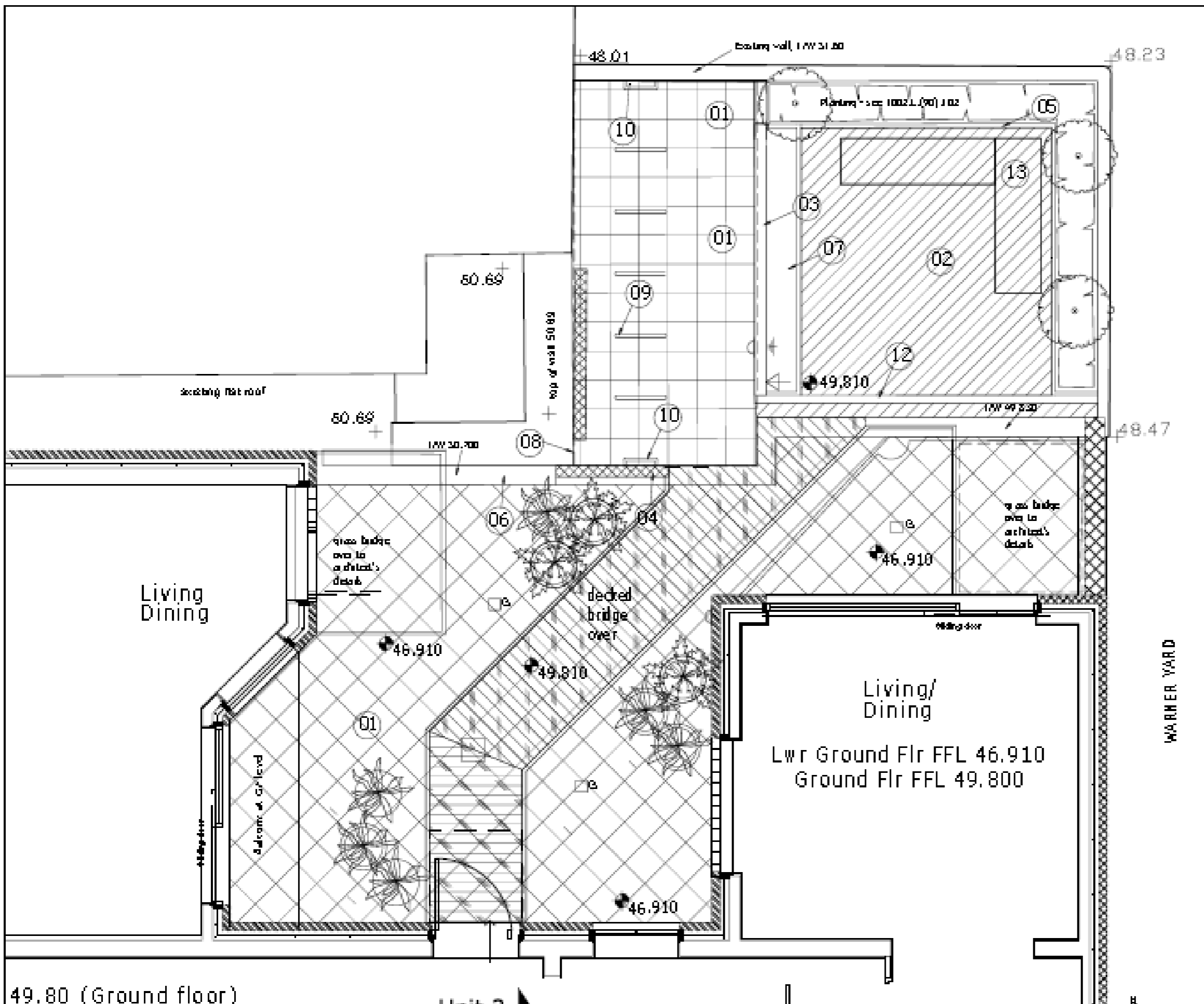
Figure 10 Shrubs, grasses and perennials



Figure 11 Climbers

Appendix

Detail drawings (reduced from A1)



- 01 4M x 2M x 1.8M olive green potted tree
- 02 1.5M x 1.5M x 1.8M olive green potted tree
- 03 1.5M x 1.5M x 1.8M olive green potted tree
- 04 1.5M x 1.5M x 1.8M olive green potted tree
- 05 1.5M x 1.5M x 1.8M olive green potted tree
- 06 1.5M x 1.5M x 1.8M olive green potted tree
- 07 1.5M x 1.5M x 1.8M olive green potted tree
- 08 1.5M x 1.5M x 1.8M olive green potted tree
- 09 1.5M x 1.5M x 1.8M olive green potted tree
- 10 1.5M x 1.5M x 1.8M olive green potted tree
- 11 1.5M x 1.5M x 1.8M olive green potted tree
- 12 1.5M x 1.5M x 1.8M olive green potted tree
- 13 1.5M x 1.5M x 1.8M olive green potted tree
- 14 1.5M x 1.5M x 1.8M olive green potted tree

PLANNING ISSUE
 The proposed landscape scheme is in accordance with the requirements of the relevant planning legislation.

Site:
 24-28 Warner Street, EC1

Project:
 24-28 Warner Street, EC1
 Rear hard landscape layout

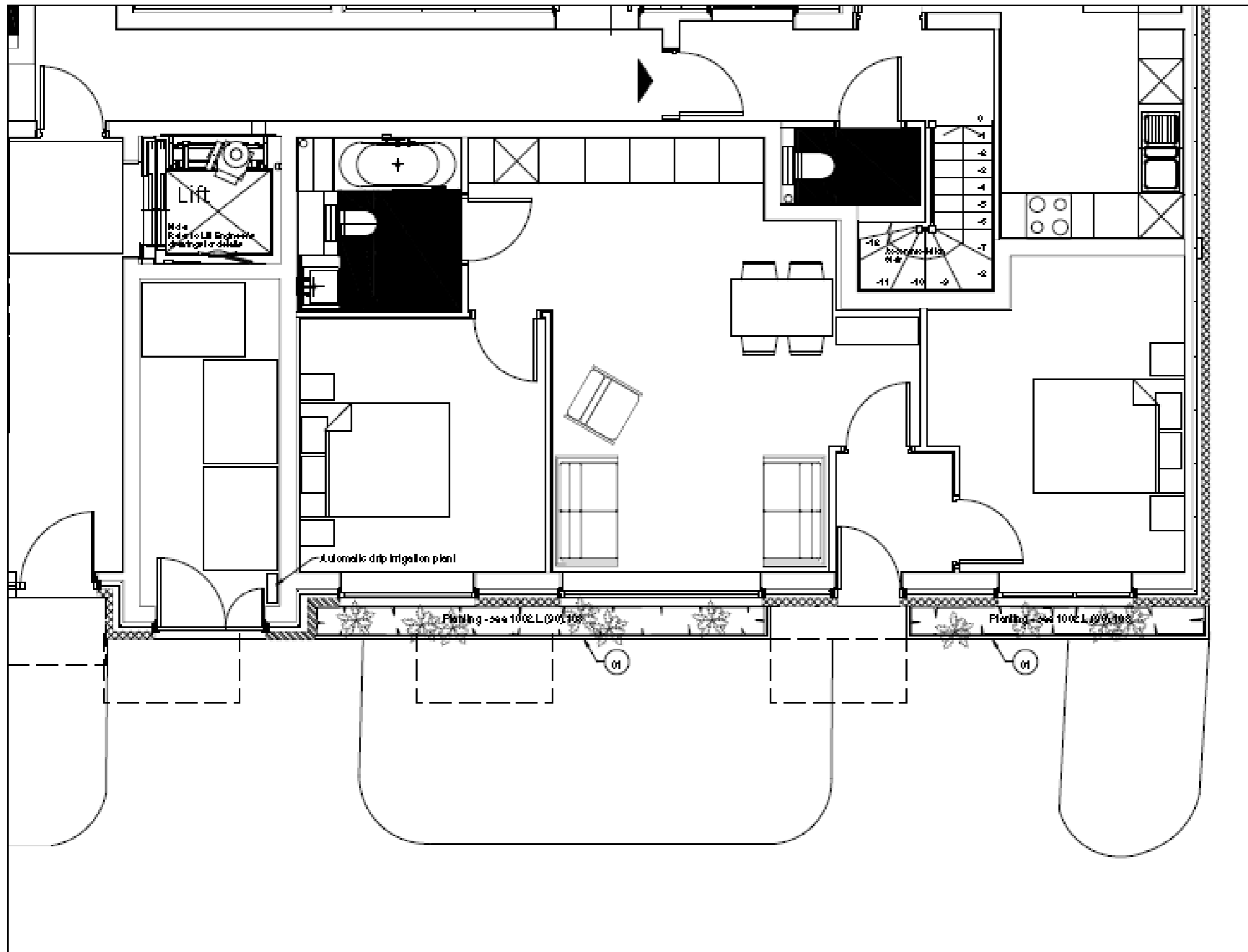
Site No.:
 24-28 Warner Street, EC1

Site No.:
 24-28 Warner Street, EC1

Scale: 1:200
Date: 30/06/2012
Drawn by: [Name]

David Or Consulting
 24-28 Warner Street, EC1

49.80 (Ground floor)



PLANNING ISSUE

None identified

Drawn:
Alec Green

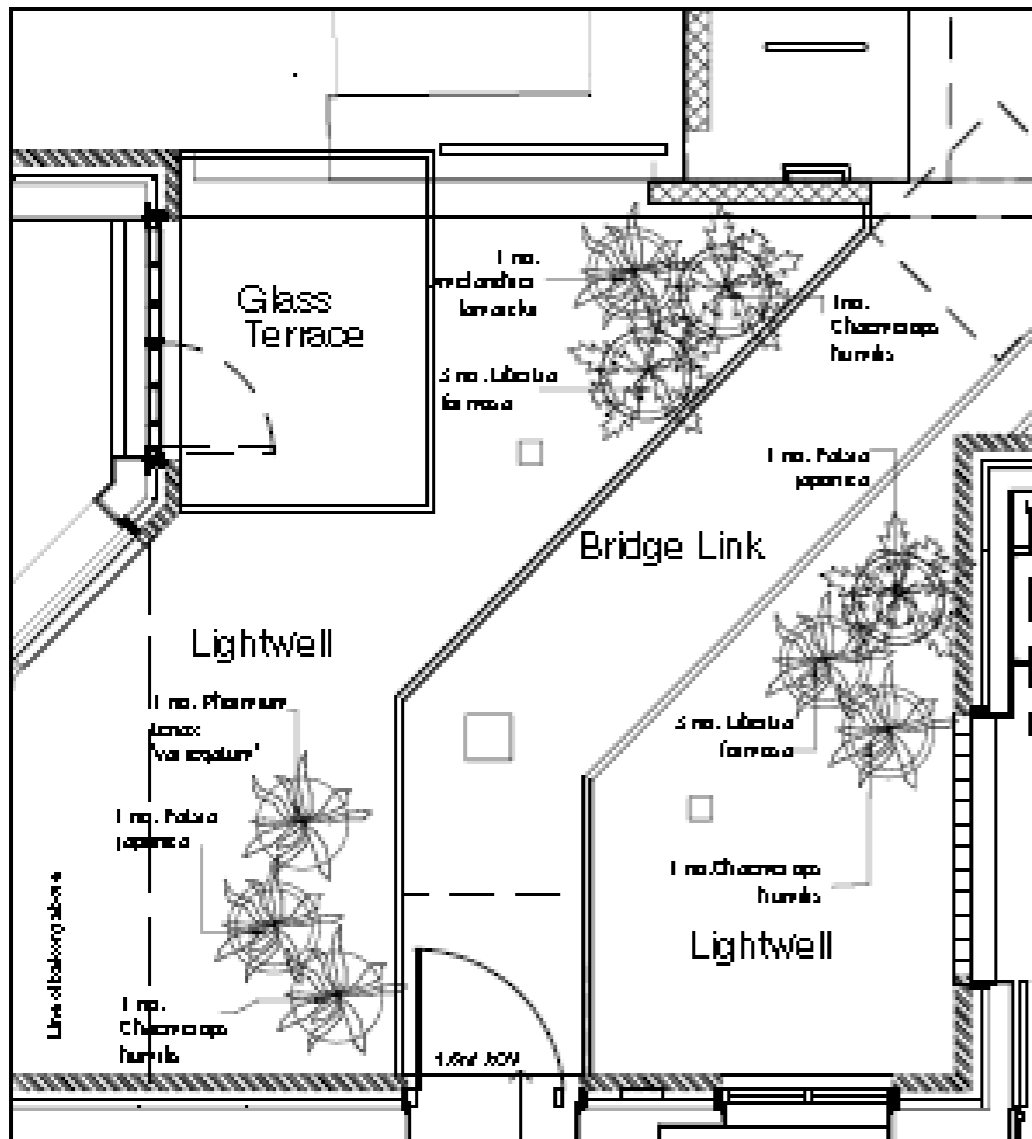
Project:
24-28
Warner
Street, EC1

Project No.:
Front hard
landscape
layout

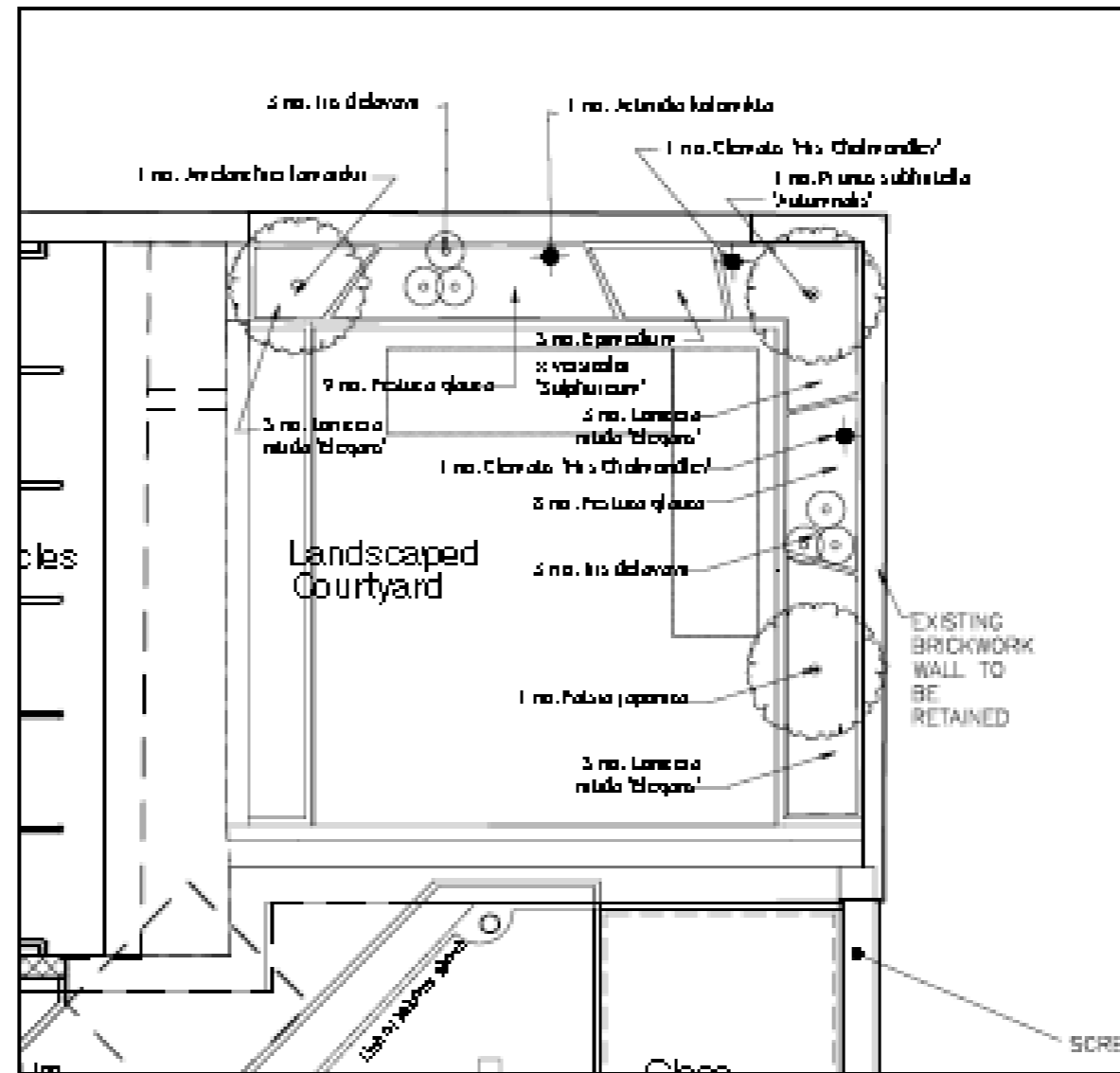
Project No.:
0001001.001.001

Scale: 1:200
Date: 30/06/12
Drawn: AG

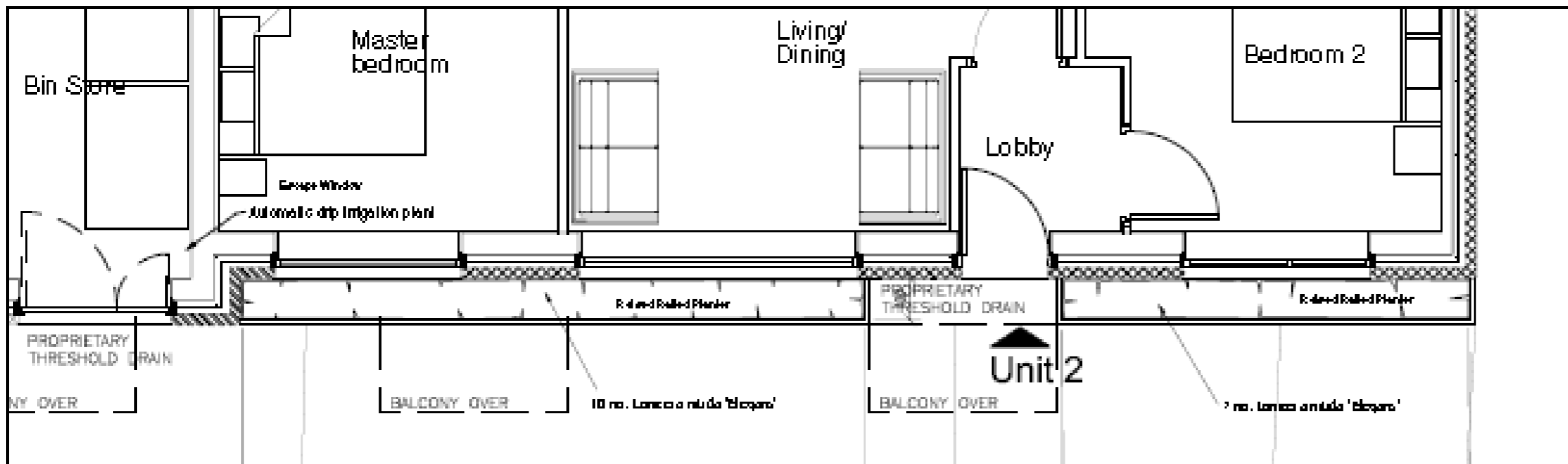
David Orr Consulting
Landscape Architects



Lower Ground courtyard



Ground floor courtyard



Front planters



Planting Schedule

No.	Name	Size/Plant vol.	Quantity	Notes
2	Arecifeira lanarada	10-12 cm NSL		containing gum
1	Phormium tenax subhastata 'naturale'	10-12 cm		rootballed
3	Chamaecyparis humilis	20L		
3	Eperolium variegatum 'Sulphurum'	2L	6/m ²	
2	Palao japonica	20L	11/m ²	
12	Protea glauca	2L	11/m ²	
30	Lonicera nitida 'Elegans'	2L	4/m ²	
1	Phormium tenax 'Variegatum'	20L		
1	Actinidia kolomikta	60-90'SL		
2	Clematis 'His Chalmersii'	60-90'SL		min 3 breaks at CL
PERENNIALS				
6	Iro delavani	2L		

PLANNING ISSUE

... ..

Drawn:

A. C. G. ...

Project:

24-28 Warner Street, EC1

Fig. No.:

Planting layout

Fig. No.:

...

Scale: 1:20 (PA)
Date: 30/06/12
Dr: A. C. G.

DOCUMENT CONTROL

Issue 1 27/03/12 Draft Planning Issue for comment

Issue 2 23/04/12 Amended drawings to show levels to existing courtyard

Issue 3 06/06/12 Amended lightwell

Issue 4 30/06/12 P1 Planning Issue

Issue 5 21/09/12 P2 Planning Issue

Author: David Orr DipLA CMLI MCIHT

Hill House, Venslooe Hill, Liskeard PL14 6BJ