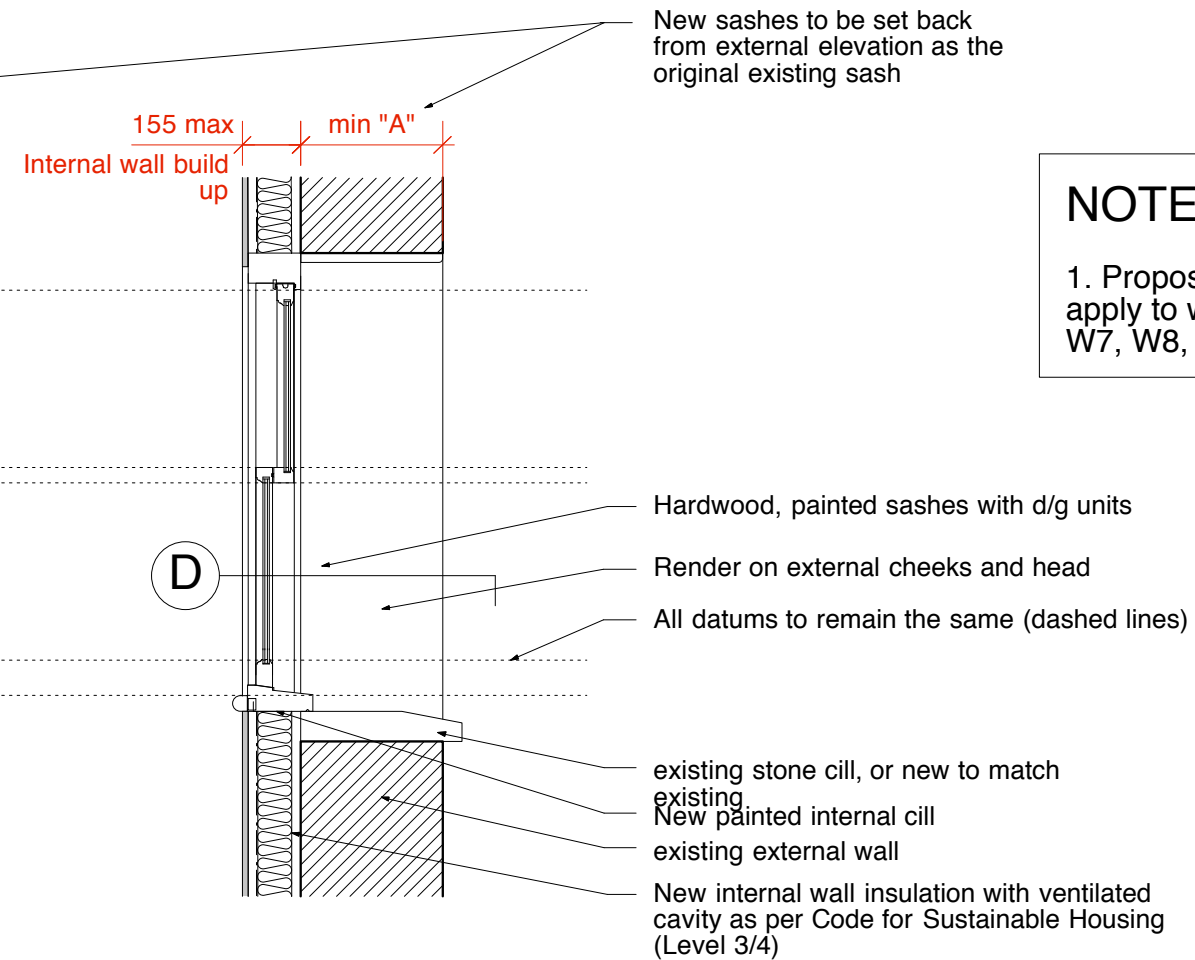
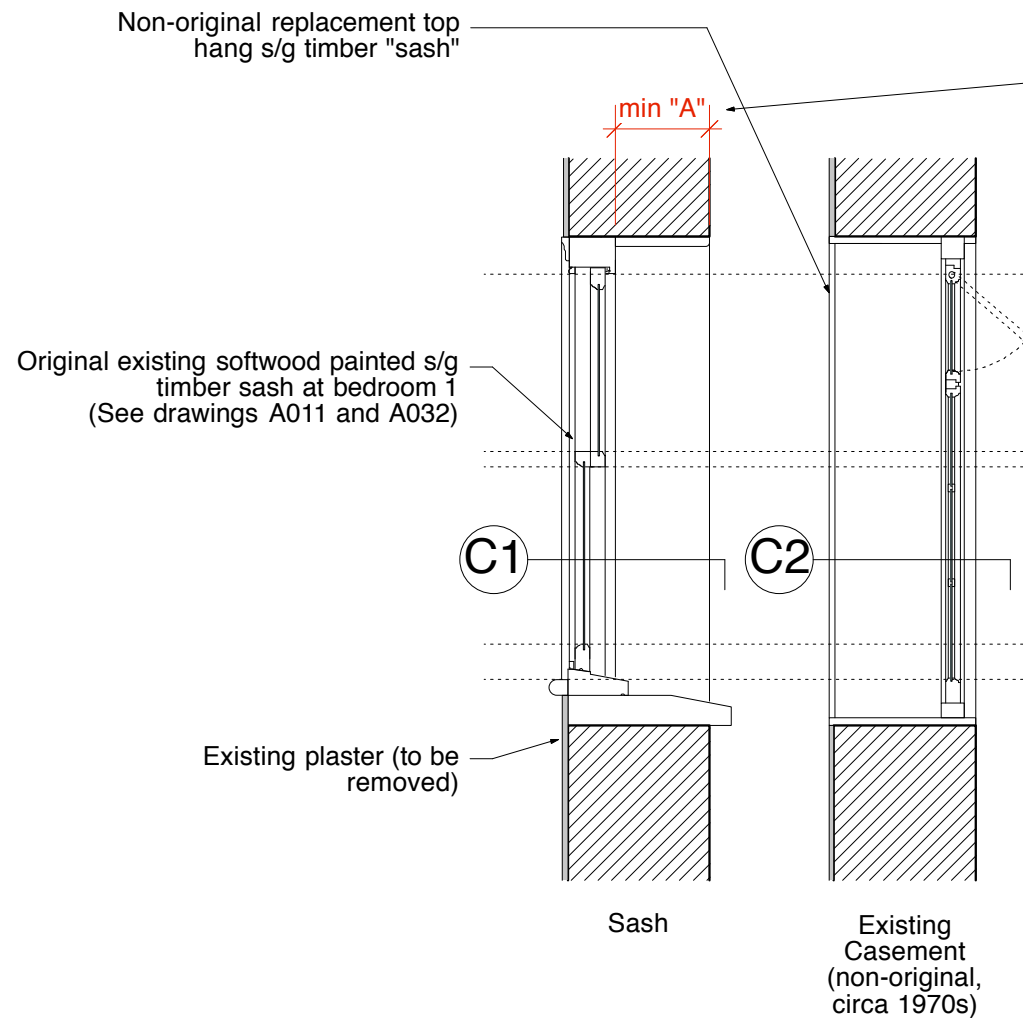


# Existing Window Conditions

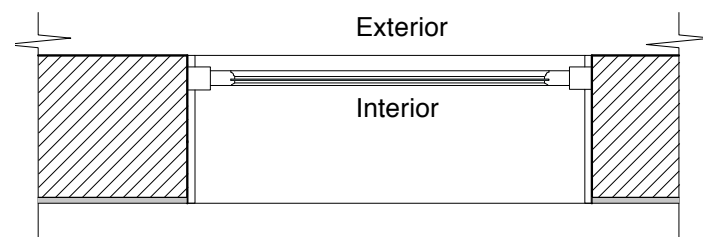
# Proposed Window Conditions



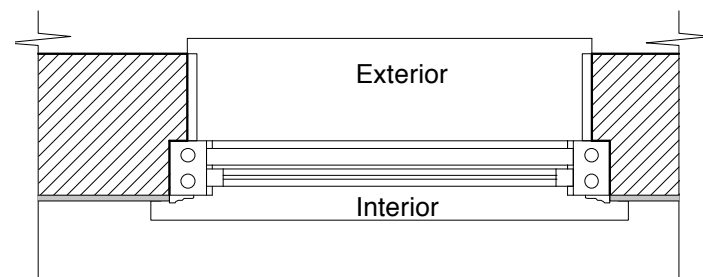
## NOTES

1. Proposed sash details apply to windows W3, W6, W7, W8, W9, W9, W11.

**A** Typical Section Detail of Original Existing Sash  
1:20



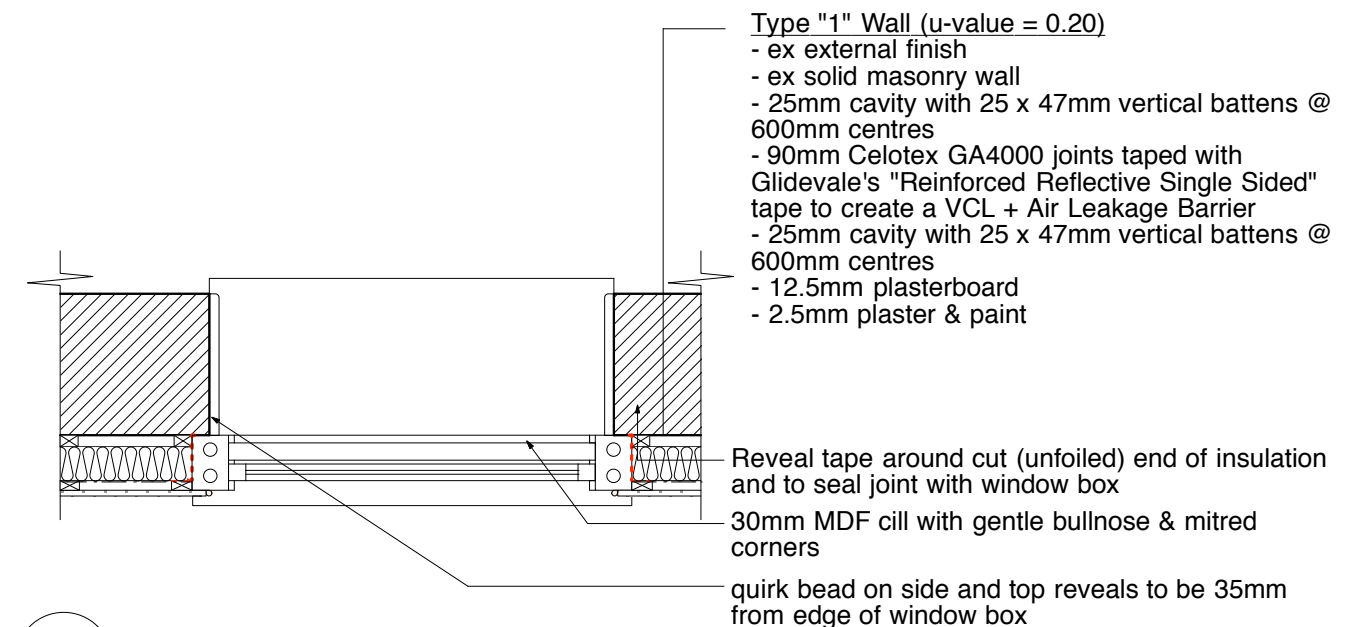
**C2** Existing top hung casement (non-original, circa 1970s)



**C1** Existing original sash window

**C** Plan Details of Existing Windows  
1:20

**B** Typical Section Detail of a Proposed Sash  
1:20



**D** Typical Section Detail of a Proposed Sash  
1:20

TITLE: Window details (existing and proposed)

PROJECT:

19 Elizabeth Mews

SCALE: 1:20

PAPER: A3

REV: P2

NO: A500

DATE: 18 SEP 2012

**SANYA POLESCUK ARCHITECTS**  
8A BELSIZE COURT GARAGES LONDON NW3 5BH  
T:0207 4318580 e-mail:enquiries@polescukarchitects.com