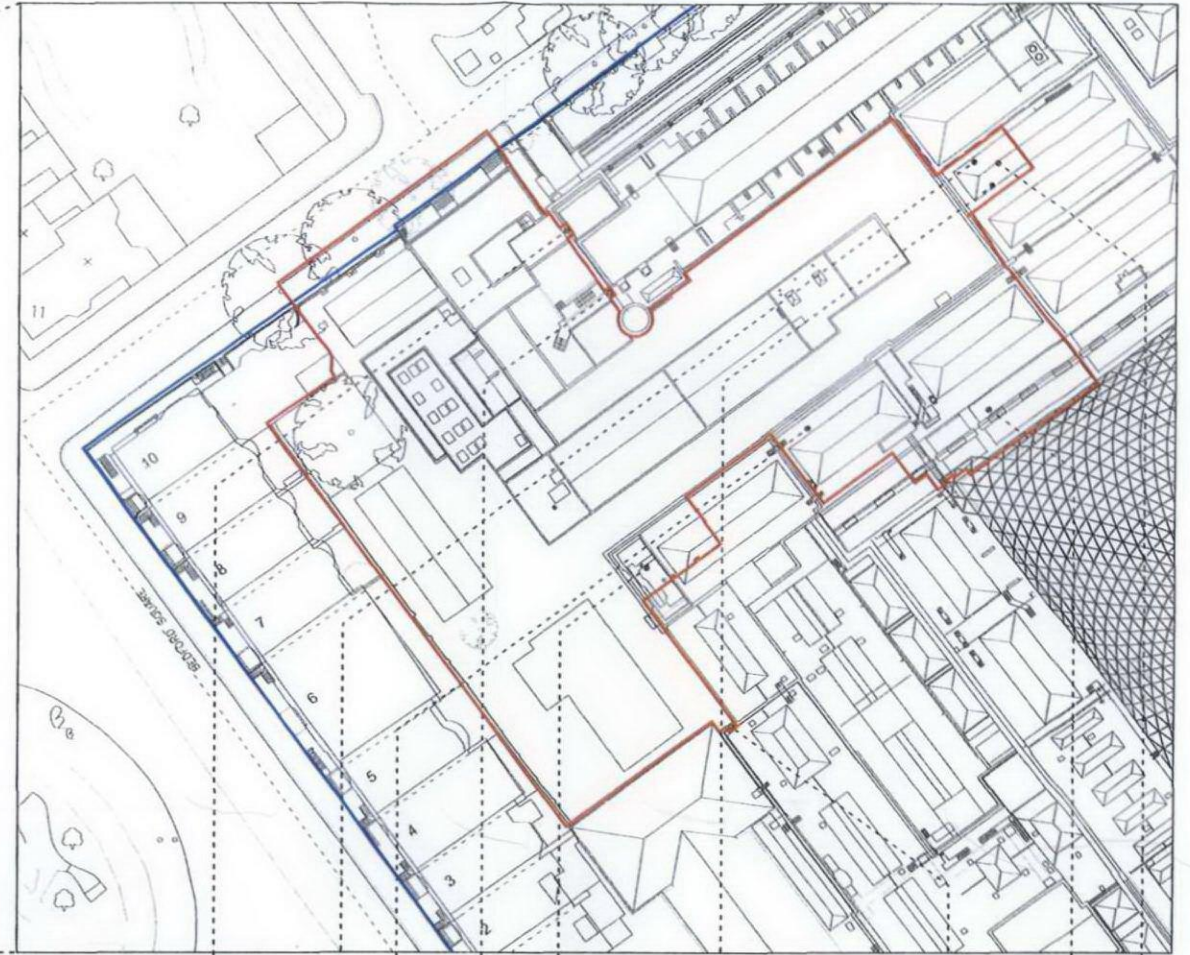
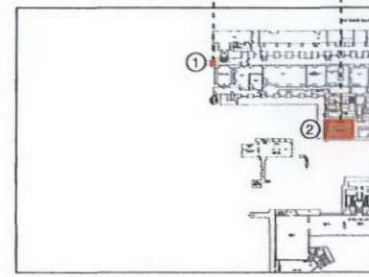


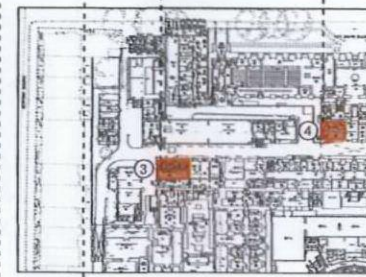
Existing Location Plan - Scale - 1:1.250



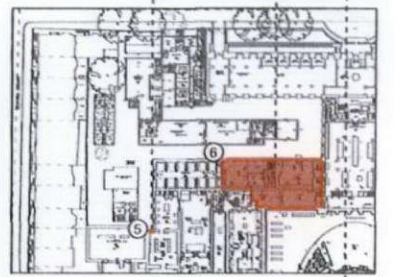
Existing Level 02 Plan Detail - Scale - 1:300



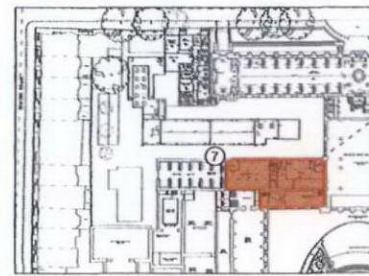
Level 00
1. Connection into KEB Basement
2. AV/ Lighting Store



Level 01
3. Contractors' Welfare
4. Refuse Collection Point



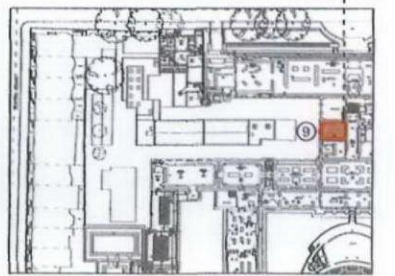
Level 02
5. Connection into Gallery 19
6. Special Exhibitions Foyer / Security and Shop



Level 03
7. Upper part of Special Ex. Foyer / Security and Shop.
This involves the removal of the existing mezzanines in Supplementary Rooms East and West



Level 05
8. New escape route from KEB



Level 06
9. Conservation and Science Centre

Red Line Boundary Breakdown - by Level

Revision	Date	Description
M	02.10.2009	Planning Application Issue

Drawing Purpose		
Planning		
Drawn by	Checked by	Authorised by
All	JMc	GS

Do not scale-off this drawing. RSHIP take no responsibility for any dimensions obtained by measuring or scaling from this drawing and no reliance may be placed on such dimensions. If no dimension is given, it is the responsibility of the recipient to ascertain the dimension specifically from the Architect or by site measurement. The sizing of all structural and service elements must always be checked against the relevant engineers drawings. No reliance should be placed upon sizing information shown on this drawing.

Project
5370 British Museum
Rogers Stirk Harbour + Partners

Drawing Title
© copyright Rogers Stirk Harbour + Partners. All rights reserved 2009
Existing Location Plan

Contact
Thames Wharf
Rennie Road
London W6 9HA
Tel: 020 7385 1235
Fax: 020 7385 8409
email: 5370@rsh-p.com
www.rsh-p.com

Scale @ A1	Drawing Number	Project - Type - Level - Section/Detail
1:1250 & 1:500	5370-FD-PL-SITE(EX)-0001	
Drawing Date	Revision Date	Revision
Mar 2008	02-10-2009	M