

## **Yale University Press**

**First Floor Plan of 47, Bedford Square and 23, Bedford Avenue, London WC1B**

**Plan No: YALEUP001**

**Date: 1<sup>st</sup> October 2012**

**Scale: 1:150**

**Paper Size: A4**

**Details:** This plan shows the First Floor of both 47, Bedford Square and 23, Bedford Avenue, London WC1B, which are linked by a bridge at the Ground Floor level.

The yellow marked area represents the 1<sup>st</sup> Floor room in 23, Bedford Avenue which contains the Yale University Press Servers, and the internal air conditioning unit which maintains the room at a constant, cool temperature.

The blue marked area represents the proposed siting of the external air conditioning unit, to be mounted on the inner facing wall of 23, Bedford Avenue, facing in towards 47, Bedford Square.

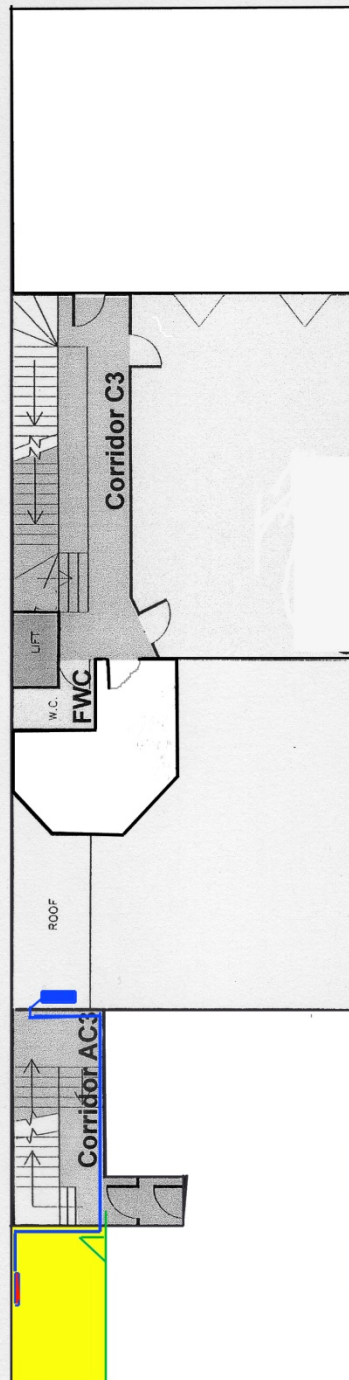
The blue line is the proposed trunking that will run from the internal air conditioning unit, along the first floor corridor of 23, Bedford Avenue to the external air conditioning unit.

The area marked roof is the roof of the bridge that connects the two buildings at the Ground Floor level.

First Floor Plan of 47 Bedford Square  
& 23 Bedford Avenue, WC1B

47 Bedford Square

23 Bedford Avenue



- Yellow Existing server area
- Blue Proposed pipe run & external unit
- Red Internal unit
- Green Existing partition