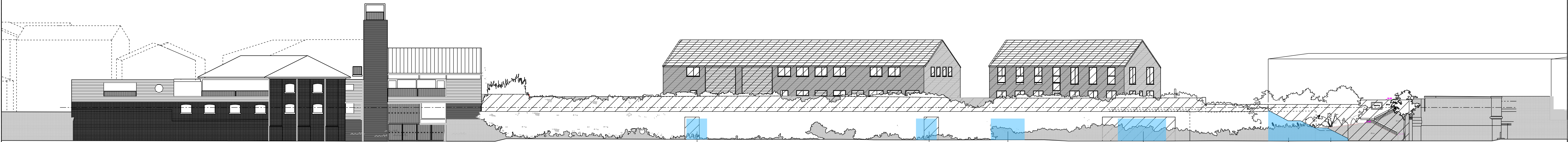


Existing Canal Elevation - As shown on demolition dwg 10019\_(00)\_P022



Existing Canal Elevation - with amendments shown

Courtyard gate entrance

Courtyard gate entrance

Cafe window

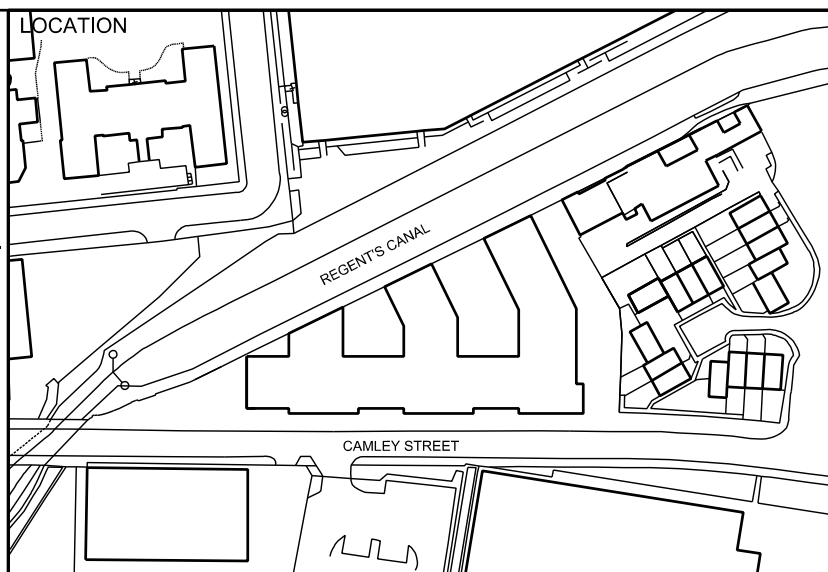
Plantroom access door

Section of steps retained (22m2)

End section and retaining wall kept, allowing retention of the stone coping and low brick wall (profile and detail of proposed steps subject to further design development)

REV    DATE

- NOTE
1. Do not scale from this drawing.
  2. All dimensions to be checked on site by the contractor and such dimensions to be his responsibility.
  3. Report all drawing errors, omissions and discrepancies to the architect.



ALLFORD HALL MONAGHAN MORRIS						
ARCHITECTS Ltd 2ND FLOOR, BLOCK C, 5-23 OLD STREET LONDON EC1V 9HL TEL 020 7251 5261 FAX 020 7251 5123 WEB WWW.AHMM.CO.UK						
job title						
103 Camley Street - Mixed use development						
drawing title / location						
Towpath wall works - Planning comparison						
drawn by	checked	scale	status			
NL	CD	1:250@A1; 1:500@A3	TENDER			
project	zone	type	classification	drawing no	revision	
10019	-	-	[00]	205	-	