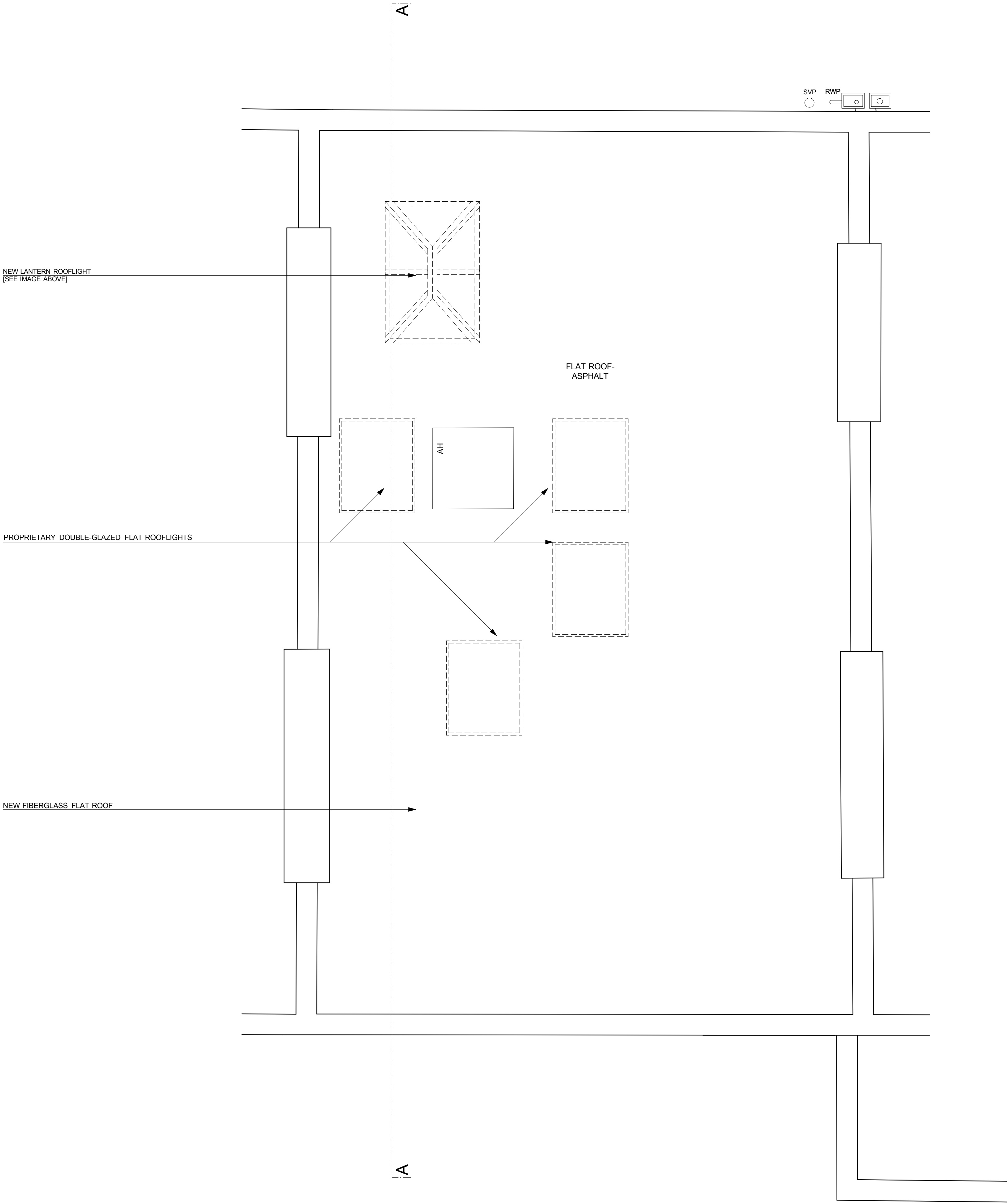
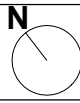


TYPICAL TRADITIONAL GLASS AND MILD STEEL LANTERN ROOFLIGHT WITH MILD STEEL GLAZING BARS, LAYERED WITH LEAD



DISCLAIMER:
DO NOT SCALE FROM THESE DRAWINGS. FOR ACCURACY, ALL DIMENSIONS AND SPECIFICATIONS MUST BE CONFIRMED AT THE SITE AND WITH RELEVANT TECHNICAL SERVICES.
TO BE READ IN CONJUNCTION WITH SERVICE ENGINEERS' DRAWINGS AND SPECIFICATIONS.
ANY DISCREPANCY BETWEEN DRAWINGS AND DIMENSIONS ON SITE ARE TO BE BROUGHT TO THE ATTENTION OF THE ARCHITECT PRIOR TO CONSTRUCTION.

NEW WALLS



NOTES:

PROJECT: **4 Grove Terrace NW5 1PH**

PROJECT STAGE: **PLANNING**

ISSUE DATE: **2012.10.08**

SCALE: **A1 (1:25)**
A3 (1:50)

DOCUMENT NUMBER:

PROJECT	STAGE	PACKAGE	NUMBER	REV
1028	PLAN		106PR	

SUBJECT: **ROOF PLAN PROPOSED**

Draw: GUS GAZZARD/ TAMARA OPPENHEIMER

Charles Tashima Architecture
99 Fairmead Road
N194DG London
Landline: +44(0)207 281 2351
Email: info@ct-arch.co.uk
Website: www.ct-arch.co.uk