



North Elevation facing Alexandra Road

North(Front)Elevation

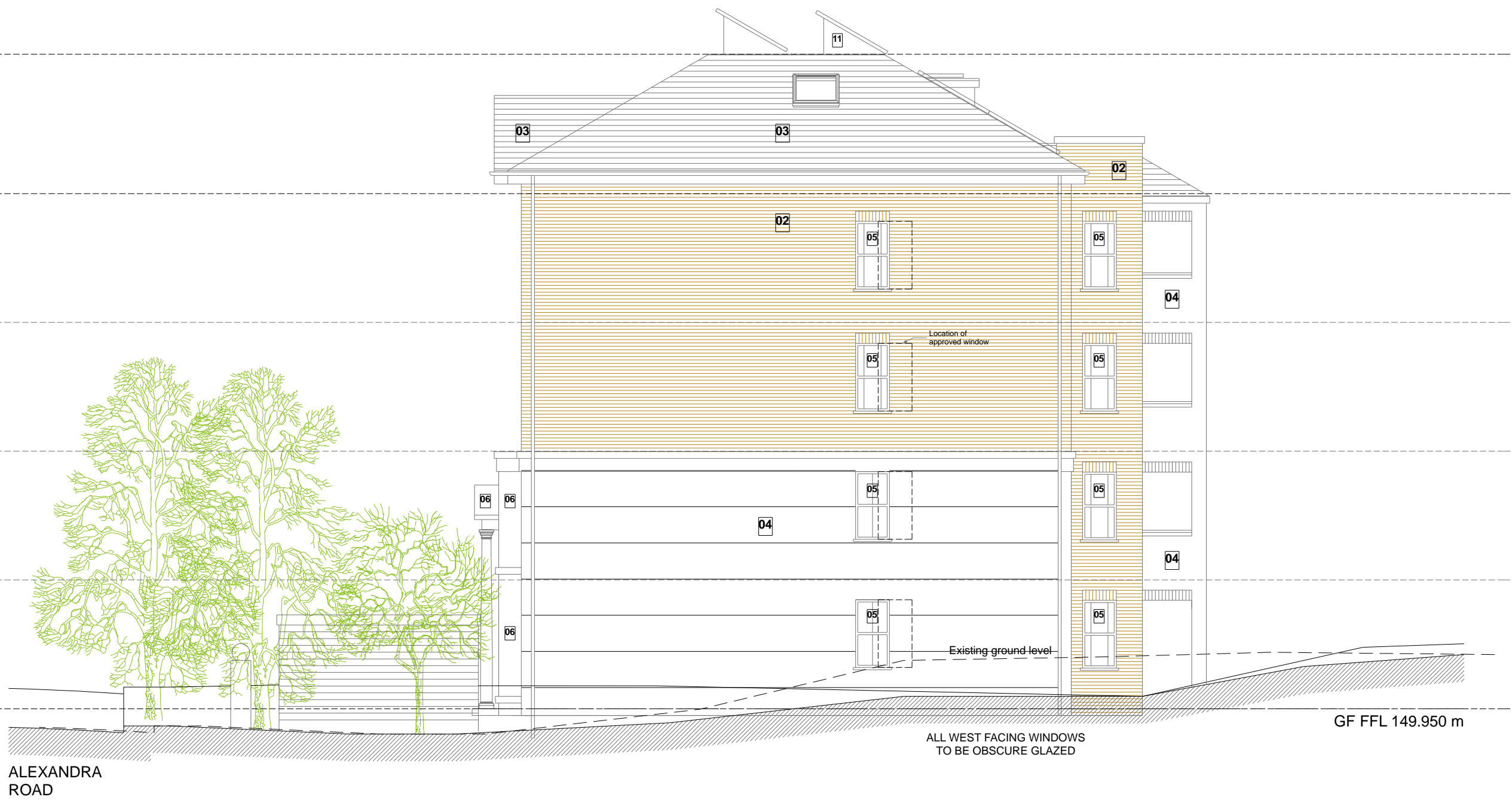
- LEGEND - FACING MATERIALS:
- 1 - Facing Brick, front facade
  - 2 - Facing Brick, side and rear facades
  - 3 - Tiled, pitched roof
  - 4 - Grooved render, all facades
  - 5 - Timber double glazed windows
  - 6 - Cast stone window surrounds, columns, portico
  - 7 - Paving, forecourt: parking, bin+bike storage
  - 8 - paving, forecourt: entrance walkway
  - 9 - Paving, forecourt: visual dividers between paved areas
  - 10 - Paving, sides and rear
  - 11 - solar panels
  - 12 - bin+recycle storage
  - 13 - bicycle storage
  - 14 - soft landscaping



Datum 145.000 m

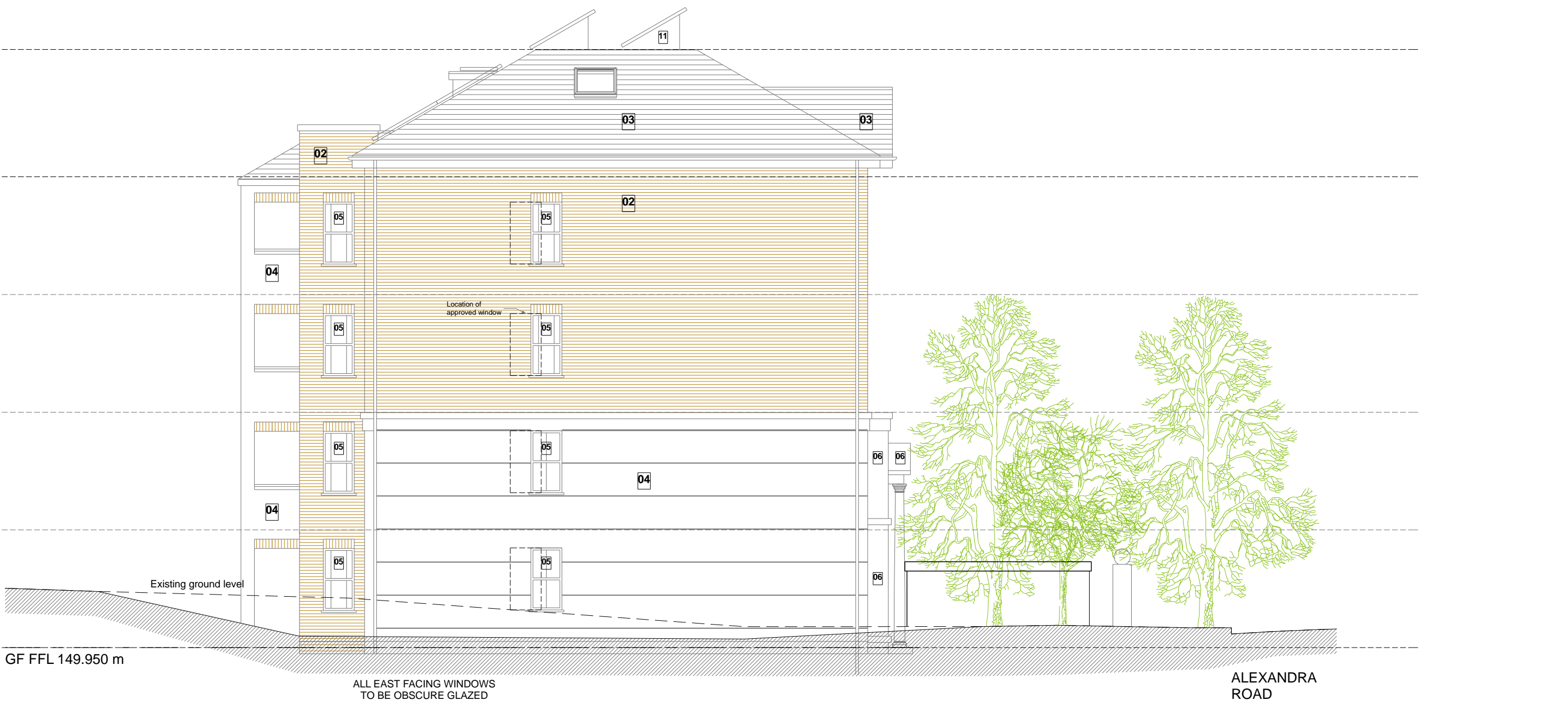
South Elevation facing Garden

South (Rear) elevation



West Elevation facing Number 19 Alexandra Road

West (side) Elevation



East Elevation facing Railway Tunnel

East (side) Elevation

Proposal for non-material amendment following grant of planning permission No 2010/3311/P.  
Reference of approved drawings: No 6086-PL05 Rev D and No 6086-PL06 Rev D

1205.4.02	PROJECT New Build Block of Flats 15-17 Alexandra Road, London, NW8 0DP	PROJECT STAGE Application for Non-material Amendments	DRAWING TITLE 4.PLANNING North(Front)Elevation, East (side) Elevation, South (Rear) elevation, West (side) Elevation	DRAWING NUMBER: 1205.4.02	REVISION: B	REVISION NOTES: REVISION A, 09/10/12: -numbering of facing materials shown	SCALE: 1:100@A1	DATE: 16/05/12	Drawn by: ---	Checked by: cls	1205.4.02 N Rowan Orchid Architects Limited <small>This drawing is the exclusive property of Rowan Orchid Architects Limited and the reproduction of any part without prior written consent from this office is a violation of applicable law. In no event shall Rowan Orchid Architects Limited be made liable to anyone for special collateral, incidental or consequential liabilities in connection with the use of this digital data once out of the RCA office.</small>
-----------	--	---	---	------------------------------	----------------	--	--------------------	-------------------	------------------	--------------------	---